

# Data sheet

valid from: 8/24/18

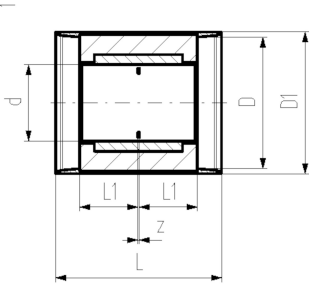


## COOL-FIT 4.0 Coupler

### Model:

- Pre-insulated PE100 SDR 11 metric
- Insulation made from GF HE foam
- Impact resistant Colour: black
- Integrated sealing lip, for a moisture-proof and vapour tight sealing

\*d32/90 - d110/180 available from Q4 2018



	d/D (mm)	DN (mm)	PN (bar)	Code	D1 (mm)	L (mm)	L1 (mm)	z (mm)	closest inch (inch)
*	32/90	25	16	<b>738 913 108</b>	97	127	36	5	1
*	40/110	32	16	<b>738 913 109</b>	117	133	40	3	1 ¼
*	50/110	40	16	<b>738 913 110</b>	117	141	44	3	1 ½
*	63/125	50	16	<b>738 913 111</b>	132	149	48	3	2
*	75/140	65	16	<b>738 913 112</b>	147	163	55	3	2 ½
*	90/160	80	16	<b>738 913 113</b>	168	178	62	4	3
*	110/180	100	16	<b>738 913 114</b>	188	198	72	4	4
	160/250	150	16	<b>738 913 117</b>	258	233	90	3	6
	225/315	200	16	<b>738 913 120</b>	324	275	110	5	8

The technical data are not binding. They neither constitute expressly warranted characteristics nor guaranteed properties nor a guaranteed durability. They are subject to modification. Our General Terms of Sale apply.

Georg Fischer Piping Systems Ltd, Postfach, CH-8201 Schaffhausen/Switzerland

Phone +41 -(0)52-631 1111

e-mail: [info.ps@georgfischer.com](mailto:info.ps@georgfischer.com)

Internet: <http://www.gfps.com>