



Multi Compatibility & Capacity Guide

kaden°
your perfect climate

www.kadenair.com.au

Contents

Outdoor Unit Specifications: KM Series	3
Indoor Unit Specifications: KSI Series	6
Indoor Unit Specifications: KMC Series	8
Indoor Unit Specifications: KMD Series	8
KM24 Cooling Capacity Table	10
KM24 Heating Capacity Table	11
KM28 Cooling Capacity Table	12
KM28 Heating Capacity Table	13
KM46 Cooling Capacity Table: Unit 1, 2 & 3	14
KM46 Heating Capacity Table: Unit 1, 2 & 3	15
KM46 Cooling Capacity Table: Unit 4	16
KM46 Heating Capacity Table: Unit 4	17
KM46 Cooling Capacity Table: Unit 5	18
KM46 Heating Capacity Table: Unit 5	19

Outdoor Unit Specifications: KM Series



KM24 OUTDOOR UNIT

KM28/KM36 OUTDOOR UNIT

Outdoor Unit Compatibility

Model	Number of indoor units that can be connected	Min connection capacity Kw	Max connection capacity Kw
KM24	1-3	2.0	10.2
KM28	1-4	2.0	11.3
KM46	1-5	2.0	17.5

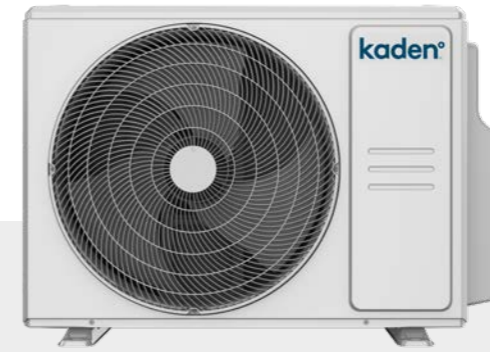
Indoor Unit Compatibility

Model	Wall Mounted KSI		Ducted KMD		Cassette KMC
Capacities	2.0/2.6/3.5/5.0	7.0	2.6/3.5/5.0	7.0	2.6/3.5/5.0
KM24	✓	✗	✓	✗	✓
KM28	✓	✓	✓	✓	✓
KM46	✓	✓	✓	✓	✓

Maximum pipe length

Model	Total length		Length to each indoor unit	
	60m	80m	30m	35m
KM24	✓	✗	✓	✗
KM28	✗	✓	✗	✓
KM46	✗	✓	✗	✓

Outdoor Unit Specifications: KM Series



KM24 OUTDOOR UNIT



KM28/KM36 OUTDOOR UNIT

KM Series Product Specifications

			KM24	KM28	KM46
Power supply	PH - V - Hz		1/220-240/50		
Recommended Circuit Breaker		A	25	25	32
Rated Current		A	17.5	19	19
Max combined system current (IDU + ODU)			21	23.5	25
Capacity	Cooling (Range)	Kw	7.3 (1.7-9.7)	8.5 (1.7-11.0)	12.0 (1.7-12.3)
	Heating (Range)	Kw	7.3 (1.8-9.7)	8.7 (1.8-11.5)	12.0 (1.8-12.5)
Input	Cooling	W	2000	2340	3550
	Heating	W	1720	2100	3150
Star Rating: Hot/ Average/ Cold	Cooling		4.5/3.5/3.5	5.0/3.5/4.0	4.0/3.0/3.0
	Heating		3.0/2.5/2.5	3.5/2.5/2.0	2.5/2.0/1.5
EER	Cooling		3.66	3.63	3.33
COP	Heating		4.24	4.14	3.86
Sound power level	Outdoor	dB(A)	66	70	72
Dimensions (H x W x D)		mm	673x890x342	810x946x410	810x946x410
Net weight		kg	48.1	66.2	75.9
Refrigerant piping	Liquid line	mm (inch)	Ø6.35 (1/4") x 3	Ø6.35 (1/4") x 4	Ø6.35 (1/4") x 4
	Gas line	mm (inch)	9.52 (3/8") x 3	Ø9.52 (3/8") x 3	Ø9.52 (3/8") x 3
				Ø12.7 (1/2") x 1	Ø12.7 (1/2") x 1
	Adaptors	mm	9.52-12.7 x 1	9.52-12.7 x 1	9.52-12.7 x 1
		mm		12.7-9.52 x 1	12.7-9.52 x 1
		mm		12.7-16.1 x 1	12.7-16.1 x 1
	Connection method		Flare connection		
Refrigerant	Type		R32		
Refrigerant	Quantity	kg	1.85	2.40	2.95
	Pre charged to pipe length	m	30	40	50
	Additional refrigerant charge	g/m	12		
Pipe Length	Max total system	m	60	80	80
	Max length to each IDU	m	30	35	35
	Min pipe length	m	5		
Max Height Difference		m	15		
Maximum capacity of indoor units allowable		kW	10.2	11.3	17.5
Operation Range	Cooling	°C	0 to 50		
	Heating	°C	-15 to 30		

Indoor Unit Specifications: KSI, KMC & KMD Series

Multi Indoor Units

	2kW	2.6kW	3.5kW	5kW	7kW
KSI: Wall hung Split System	KSI06	KSI09	KSI12	KSI18	KSI24
KMD: Ducted Air Conditioner		KMD09	KMD12	KMD18	KMD24
KMC Cassette Air Conditioner		KMC09	KMC12	KMC18	



Sizes (kW): Wall Mounted Product Specifications

Sizes: 2.0, 2.6, 3.5, 5.0, 7.0



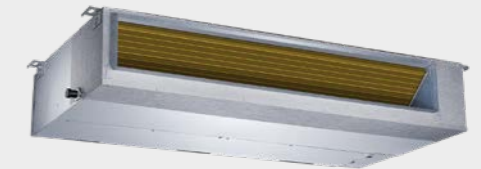
			KSI06	KSI09	KSI12	KSI18	KSI24
Capacity	Cooling (Range)	Kw	2.0	2.6	3.5	5.0	7.0
	Heating (Range)	Kw	2.2	2.7	4.0	5.2	7.5
Rated Current		A	0.24	0.27	0.27	0.40	0.40
Sound Pressure (silent, low, medium, high)		dBA	25/30/32/38	25/30/32/38	24/30/33/39	28/34/38/44	29/33/39/45
Airflow (silent, low, medium, high)		l/sec	75/94/127/152	83/100/138/175	86/105/147/183	138/166/222/263	229/250/302/381
Dimensions (H x W x D)		mm	729×200×292	729×200×292	802×200×295	971×228×321	1082×234×337
Net weight		kg	8.0	8.0	8.5	11.1	13.1
Refrigerant piping	Liquid line	mm (inch)	Ø6.35 (1/4")	Ø6.35 (1/4")	Ø6.35 (1/4")	Ø6.35 (1/4")	Ø9.52 (3/8")
	Gas line	mm (inch)	Ø9.52 (3/8")	Ø9.52 (3/8")	Ø9.52 (3/8")	Ø12.7 (1/2")	Ø15.90 (5/8")
	Connection Method		Flare Connection				
Operation Range	Cooling	°C	0 to 50				
	Heating	°C	-15 to 30				

Indoor Unit Specifications: KMC & KMD Series



KMC Slim Cassette Product Specifications Sizes (kW): 2.6, 3.5, 5.0

			KMC09	KMC12	KMC18
Capacity	Cooling (Range)	Kw	2.6	3.5	5.3
	Heating (Range)	Kw	2.9	4.1	5.4
Rated Current		A	0.18	0.18	0.44
Sound Pressure (low, medium, high)		dBa	29/33/38	34/37/41	41/42/44
Airflow (low, medium, high)		l/sec	125/138/161	115/140/171	139/156/189
Dimensions (H x W x D)		mm	260x570x570	260x570x570	260x570x570
Net weight		kg	14.5	16.2	16.2
Refrigerant piping	Liquid line	mm (inch)	Ø6.35(1/4")	Ø6.35(1/4")	Ø6.35(1/4")
	Gas line	mm (inch)	Ø9.52(3/8")	Ø9.52(3/8")	Ø12.7(1/2")
	Connection Method		Flare Connection		
Operation Range	Cooling	°C	0 to 50		
	Heating	°C	-15 to 30		



KMD Slim Ducted Product Specifications Sizes (kW): 2.6, 3.5, 5.0, 7.0

			KMD09	KMD12	KMD18	KMD24
Capacity	Cooling (Range)	Kw	2.6	3.5	5.0	7.0
	Heating (Range)	Kw	2.9	3.8	5.5	7.6
Rated Current		A	1.1	1.1	1.3	1.3
Sound Pressure (low, medium, high)		dBa	27/34/40	30/32/34	35/39/42	41/46/49
Airflow (low, medium, high)		l/sec	64/94/139	83/133/167	143/196/253	229/287/341
Dimensions (H x W x D)		mm	200x700x450	200x700x506	210x880x674	249x1100x774
Net weight		kg	18.0	17.8	24.4	32.3
Refrigerant piping	Liquid line	mm (inch)	Ø6.35(1/4")	Ø6.35(1/4")	Ø6.35(1/4")	Ø9.52(3/8")
	Gas line	mm (inch)	Ø9.52(3/8")	Ø9.52(3/8")	Ø12.7(1/2")	Ø15.90(5/8")
	Connection Method		Flare Connection			
Operation Range	Cooling	°C	0 to 50			
	Heating	°C	-15 to 30			

For outdoor unit:

KM24 – 7.3kW

Cooling

	Indoor Unit Combinations (kW)			Rated Capacity (kW)			Total Cooling Capacity (kW)		
	Unit A	Unit B	Unit C	Unit A	Unit B	Unit C	Min. data	Rated data	Max. data
1 Unit	2			2.85	—	—	1.71	2.85	3.65
	2.6			3.16	—	—	2.05	3.16	4.04
	3.5			3.68	—	—	2.39	3.68	4.71
2 Unit Comb.	5			5.05	—	—	3.13	5.05	6.46
	2	2		2.43	2.43	—	3.01	4.86	5.59
	2	2.6		2.28	2.97	—	3.26	5.25	6.04
	2	3.5		2.22	3.54	—	3.57	5.76	6.62
	2	5		1.87	4.67	—	4.05	6.54	7.52
	2.6	2.6		2.73	2.73	—	3.38	5.45	6.27
	2.6	3.5		2.80	3.44	—	3.87	6.24	7.18
	2.6	5		2.31	4.44	—	4.19	6.75	7.76
	3.5	3.5		3.36	3.36	—	4.17	6.72	7.73
	3.5	5		2.74	4.54	—	4.51	7.28	8.37
3 Unit Comb.	2	2	2	2.20	2.20	2.20	4.09	6.60	7.59
	2	2	2.6	2.04	2.04	2.65	4.17	6.72	7.73
	2	2	3.5	2.01	2.01	3.22	4.50	7.25	8.34
	2	2.6	2.6	2.08	2.71	2.71	4.65	7.50	8.63
	2	2.6	3.5	2.05	2.66	3.27	4.95	7.98	9.18
	2	3.5	3.5	1.85	3.24	3.24	5.17	8.34	9.59
	2.6	2.6	2.6	2.60	2.60	2.60	4.84	7.80	8.97
	2.6	2.6	3.5	2.47	2.47	3.32	5.12	8.26	9.50
	2.6	2.6	5	2.17	2.17	4.17	5.27	8.50	9.78
	2.6	3.5	3.5	2.29	3.08	3.08	5.23	8.44	9.71

Min data: total output of indoor units at minimum rated capacity in rated conditions

Rated data: total output of indoor units at nominal rated capacity in rated conditions

Max data: total output of indoor units at maximum rated capacity in rated conditions

Rated Conditions

Unit Type	Dry Bulb	Wet Bulb
IDU	27°C	19°C
ODU	35°C	24°C

Heating

	Indoor Unit Combinations (kW)			Rated Capacity (kW)			Total Heating Capacity (kW)		
	Unit A	Unit B	Unit C	Unit A	Unit B	Unit C	Min. data	Rated data	Max. data
1 Unit	2			2.96	—	—	1.78	2.96	3.79
	2.6			3.28	—	—	2.13	3.28	4.20
	3.5			3.75	—	—	2.44	3.75	4.80
2 Unit Comb.	5			5.22	—	—	3.24	5.22	6.68
	2	2		2.56	2.56	—	3.17	5.12	5.89
	2	2.6		2.37	3.08	—	3.38	5.45	6.27
	2	3.5		2.21	3.53	—	3.56	5.74	6.60
	2	5		1.95	4.88	—	4.23	6.83	7.85
	2.6	2.6		2.79	2.79	—	3.46	5.58	6.42
	2.6	3.5		2.63	3.23	—	3.63	5.86	6.74
	2.6	5		2.51	4.83	—	4.55	7.34	8.44
	3.5	3.5		3.36	3.36	—	4.17	6.72	7.73
	3.5	5		3.12	5.16	—	5.13	8.28	9.52
3 Unit Comb.	2	2	2	2.27	2.27	2.27	4.22	6.80	7.82
	2	2	2.6	2.10	2.10	2.73	4.29	6.92	7.96
	2	2	3.5	2.07	2.07	3.31	4.62	7.45	8.57
	2	2.6	2.6	2.22	2.89	2.89	4.96	8.00	9.20
	2	2.6	3.5	2.10	2.73	3.36	5.07	8.18	9.41
	2	3.5	3.5	1.90	3.32	3.32	5.29	8.54	9.82
	2.6	2.6	2.6	2.69	2.69	2.69	5.00	8.06	9.27
	2.6	2.6	3.5	2.53	2.53	3.40	5.25	8.46	9.73
	2.6	2.6	5	2.20	2.20	4.24	5.36	8.64	9.94
	2.6	3.5	3.5	2.34	3.15	3.15	5.36	8.64	9.94

For outdoor unit:

KM28 – 8.5kW

Cooling

	Indoor Unit Combinations (kW)				Rated Capacity (kW)				Total Cooling Capacity (kW)		
	Unit A	Unit B	Unit C	Unit D	Unit A	Unit B	Unit C	Unit D	Min. data	Rated data	Max. data
1 Unit	2				2.85	—	—	—	1.71	2.85	3.65
	2.6				3.16	—	—	—	2.05	3.16	4.04
	3.5				3.68	—	—	—	2.39	3.68	4.71
	5				5.05	—	—	—	3.13	5.05	6.46
	7				7.08	—	—	—	4.39	7.08	9.06
2 Unit Comb.	2.0	2.0			2.43	2.43	—	—	3.01	4.86	5.59
	2.0	2.6			2.28	2.97	—	—	3.26	5.25	6.04
	2.0	3.5			2.22	3.54	—	—	3.57	5.76	6.62
	2.0	5.0			1.87	4.67	—	—	4.05	6.54	7.52
	2.6	2.6			2.73	2.73	—	—	2.29	5.45	6.65
	2.6	3.5			2.80	3.44	—	—	2.62	6.24	7.61
	2.6	5.0			2.31	4.44	—	—	2.84	6.75	8.24
	2.6	7.0			2.13	5.75	—	—	4.89	7.88	9.06
	3.5	3.5			3.36	3.36	—	—	2.82	6.72	8.20
	3.5	5.0			2.74	4.54	—	—	3.06	7.28	8.88
3 Unit Comb.	2.0	2.0	2.0		2.20	2.20	2.20	—	2.77	6.60	8.05
	2.0	2.0	2.6		2.04	2.04	2.65	—	2.82	6.72	8.20
	2.0	2.0	3.5		1.93	1.93	3.38	—	3.05	7.25	8.85
	2.0	2.0	5.0		1.82	1.82	4.54	—	3.44	8.18	9.98
	2.0	2.6	2.6		2.01	2.62	2.62	—	3.05	7.25	8.85
	2.0	2.6	3.5		2.05	2.66	3.27	—	3.35	7.98	9.74
	2.0	2.6	5.0		1.78	2.32	4.46	—	3.60	8.56	10.44
	2.0	3.5	3.5		1.85	3.24	3.24	—	3.50	8.34	10.17
	2.6	2.6	2.6		2.60	2.60	2.60	—	3.28	7.80	9.52
	2.6	2.6	3.5		2.47	2.47	3.32	—	3.47	8.26	10.08
	2.6	2.6	5.0		2.19	2.19	4.22	—	3.61	8.60	10.49
	2.6	3.5	3.5		2.29	3.08	3.08	—	3.54	8.44	10.30
	3.5	3.5	3.5		2.85	2.85	2.85	—	3.59	8.55	10.43
	4 Unit Comb.	2.0	2.0	2.0	2.0	1.90	1.90	1.90	1.90	2.45	7.60
2.0		2.0	2.0	2.6	2.00	2.00	2.00	2.60	3.53	8.60	10.49
2.0		2.0	2.0	3.5	1.96	1.96	1.96	3.14	3.70	9.03	11.01
2.0		2.0	2.6	2.6	1.90	1.90	2.47	2.47	3.58	8.74	10.66
2.0		2.0	2.6	3.5	1.96	1.96	2.55	3.13	3.93	9.60	11.71
2.0		2.6	2.6	2.6	1.90	2.47	2.47	2.47	3.82	9.31	11.36
2.6		2.6	2.6	2.6	2.44	2.44	2.44	2.44	4.01	9.78	11.93
2.6		2.6	2.6	3.5	2.35	2.35	2.35	2.89	4.08	9.94	12.13

Heating

	Indoor Unit Combinations (kW)				Rated Capacity (kW)				Total Heating Capacity (kW)		
	Unit A	Unit B	Unit C	Unit D	Unit A	Unit B	Unit C	Unit D	Min. data	Rated data	Max. data
1 Unit	2				2.96	—	—	—	1.78	2.96	3.79
	2.6				3.28	—	—	—	2.13	3.28	4.20
	3.5				3.75	—	—	—	2.44	3.75	4.80
	5				5.22	—	—	—	3.24	5.22	6.68
	7				6.55	—	—	—	4.06	6.55	8.38
2 Unit Comb.	2.0	2.0			2.56	2.56	—	—	3.17	5.12	5.89
	2.0	2.6			2.37	3.08	—	—	3.38	5.45	6.27
	2.0	3.5			2.21	3.53	—	—	3.56	5.74	6.60
	2.0	5.0			1.95	4.88	—	—	4.23	6.83	7.85
	2.6	2.6			2.79	2.79	—	—	2.34	5.58	6.81
	2.6	3.5			2.63	3.23	—	—	2.46	5.86	7.15
	2.6	5.0			2.51	4.83	—	—	3.08	7.34	8.95
	2.6	7.0			2.25	6.07	—	—	5.16	8.32	9.57
	3.5	3.5			3.36	3.36	—	—	2.82	6.72	8.20
	3.5	5.0			3.12	5.16	—	—	3.48	8.28	10.10
3 Unit Comb.	2.0	2.0	2.0		2.27	2.27	2.27	—	2.86	6.80	8.30
	2.0	2.0	2.6		2.10	2.10	2.73	—	2.91	6.92	8.44
	2.0	2.0	3.5		2.07	2.07	3.31	—	3.13	7.45	9.09
	2.0	2.0	5.0		1.80	1.80	4.78	—	3.52	8.38	10.22
	2.0	2.6	2.6		2.07	2.69	2.69	—	3.13	7.45	9.09
	2.0	2.6	3.5		2.10	2.73	3.36	—	3.44	8.18	9.98
	2.0	2.6	5.0		1.78	2.32	4.46	—	3.60	8.56	10.44
	2.0	3.5	3.5		1.90	3.32	3.32	—	3.59	8.54	10.42
	2.6	2.6	2.6		2.69	2.69	2.69	—	3.39	8.06	9.83
	2.6	2.6	3.5		2.47	2.47	3.32	—	3.47	8.26	10.08
	2.6	2.6	5.0		2.19	2.19	4.22	—	3.61	8.60	10.49
	2.6	3.5	3.5		2.34	3.15	3.15	—	3.63	8.64	10.54
	3.5	3.5	3.5		2.95	2.95	2.95	—	3.72	8.85	10.80
	4 Unit Comb.	2.0	2.0	2.0	2.0	2.18	2.18	2.18	2.18	2.45	8.72
2.0		2.0	2.0	2.6	2.23	2.23	2.23	2.90	3.94	9.60	11.71
2.0		2.0	2.0	3.5	2.13	2.13	2.13	3.40	4.01	9.79	11.94
2.0		2.0	2.6	2.6	2.10	2.10	2.73	2.73	3.96	9.66	11.79
2.0		2.0	2.6	3.5	2.10	2.10	2.73	3.36	4.22	10.30	12.57
2.0		2.6	2.6	2.6	2.04	2.65	2.65	2.65	4.10	10.00	12.20
2.6		2.6	2.6	2.6	2.63	2.63	2.63	2.63	4.31	10.50	12.81
2.6		2.6	2.6	3.5	2.51	2.51	2.51	3.09	4.36	10.62	12.96

For outdoor unit:

KM46 – 12.0kW

Cooling

	Indoor Unit Combinations (kW)					Rated Capacity (kW)					Total Cooling Capacity (kW)		
	Unit A	Unit B	Unit C	Unit D	Unit E	Unit A	Unit B	Unit C	Unit D	Unit E	Min. data	Rated data	Max. data
1 Unit	2					2.85	—	—	—		1.71	2.85	3.71
	2.6					3.16	—	—	—		1.90	3.16	3.79
	3.5					3.68	—	—	—		2.21	3.68	4.42
	5					5.05	—	—	—		3.03	5.05	5.81
	7					7.08	—	—	—		4.25	7.08	8.14
2 Unit Comb.	2.0	2.0				2.36	2.36				2.83	4.72	5.43
	2.0	2.6				2.32	2.83				3.09	5.15	5.92
	2.0	3.5				2.30	3.75				3.63	6.05	6.96
	2.0	5.0				2.25	5.45				3.85	7.70	8.86
	2.0	7.0				2.10	6.63				4.37	8.73	9.17
	2.6	2.6				2.86	2.86				3.43	5.72	6.58
	2.6	3.5				2.79	3.86				3.32	6.65	7.65
	2.6	5.0				2.75	5.23				3.99	7.98	9.18
	2.6	7.0				2.61	6.70				4.66	9.31	9.78
	3.5	3.5				3.64	3.64				3.64	7.28	8.37
	3.5	5.0				3.48	4.85				4.17	8.33	9.58
	3.5	7.0				3.43	6.55				4.99	9.98	10.47
	5.0	5.0				4.85	4.85				4.85	9.70	10.19
	3 Unit Comb.	2.0	2.0	2.0			2.30	2.30	2.30			3.45	6.90
2.0		2.0	2.6			2.20	2.20	2.86			3.63	7.26	7.99
2.0		2.0	3.5			2.10	2.10	3.68			3.94	7.88	8.66
2.0		2.0	5.0			2.10	2.10	5.25			4.73	9.45	9.92
2.0		2.0	7.0			1.90	1.90	5.94			4.87	9.74	10.22
2.0		2.6	2.6			2.20	2.86	2.86			3.96	7.92	8.71
2.0		2.6	3.5			2.10	2.70	3.71			4.25	8.51	9.36
2.0		2.6	5.0			2.10	2.65	4.66			4.70	9.41	9.88
2.0		2.6	7.0			1.90	2.40	5.56			4.93	9.86	10.35
2.0		3.5	3.5			2.08	3.55	3.55			4.59	9.18	9.64
2.0		3.5	5.0			2.10	3.55	4.64			5.15	10.29	10.80
2.0		3.5	7.0			1.85	3.26	5.52			5.31	10.63	11.16
2.0		5.0	5.0			1.94	4.55	4.55			5.52	11.04	11.59
2.6		2.6	2.6			2.86	2.86	2.86			4.29	8.58	9.44
2.6		2.6	3.5			2.76	2.76	3.62			4.57	9.14	10.05
2.6		2.6	5.0			2.54	2.54	4.61			4.85	9.69	10.66
2.6		2.6	7.0			2.40	2.40	5.69			5.25	10.49	11.02
2.6		3.5	3.5			2.63	3.63	3.63			4.94	9.89	10.88
2.6		3.5	5.0			2.40	3.30	4.62			5.16	10.32	10.84
2.6		3.5	7.0			2.30	3.05	5.79			5.57	11.14	11.69
2.6	5.0	5.0			2.31	4.20	4.20			5.36	10.71	11.25	
3.5	3.5	3.5			3.36	3.36	3.36			5.04	10.08	10.58	
3.5	3.5	5.0			3.20	3.20	4.24			5.32	10.64	11.18	

Heating

	Indoor Unit Combinations (kW)					Rated Capacity (kW)					Total Heating Capacity (kW)		
	Unit A	Unit B	Unit C	Unit D	Unit E	Unit A	Unit B	Unit C	Unit D	Unit E	Min. data	Rated data	Max. data
1 Unit	2					2.96	—	—	—		1.78	2.96	3.79
	2.6					3.28	—	—	—		2.13	3.28	4.20
	3.5					3.75	—	—	—		2.44	3.75	4.80
	5					5.22	—	—	—		3.24	5.22	6.68
	7					6.55	—	—	—		4.06	6.55	8.38
2 Unit Comb.	2.0	2.0				2.60	2.60				3.12	5.20	5.98
	2.0	2.6				2.30	3.22				3.31	5.52	6.35
	2.0	3.5				2.40	4.20				3.96	6.60	7.59
	2.0	5.0				2.40	5.30				3.85	7.70	8.86
	2.0	7.0				2.10	7.08				4.59	9.18	9.64
	2.6	2.6				3.12	3.12				3.74	6.24	7.18
	2.6	3.5				3.20	4.12				3.66	7.32	8.42
	2.6	5.0				3.05	5.31				4.18	8.36	9.61
	2.6	7.0				2.70	7.09				4.90	9.79	10.28
	3.5	3.5				4.20	4.20				4.20	8.40	9.66
	3.5	5.0				3.80	5.13				4.46	8.93	10.26
	3.5	7.0				3.70	7.12				5.41	10.82	11.36
	5.0	5.0				5.05	5.05				5.05	10.10	10.61
	3 Unit Comb.	2.0	2.0	2.0			2.40	2.40	2.40			3.60	7.20
2.0		2.0	2.6			2.40	2.40	3.12			3.96	7.92	8.71
2.0		2.0	3.5			2.40	2.40	4.20			4.50	9.00	9.90
2.0		2.0	5.0			2.20	2.20	5.50			4.95	9.90	10.40
2.0		2.0	7.0			2.15	2.15	6.37			5.34	10.67	11.20
2.0		2.6	2.6			2.40	3.12	3.12			4.32	8.64	9.50
2.0		2.6	3.5			2.40	3.10	4.22			4.86	9.72	10.69
2.0		2.6	5.0			2.30	2.76	5.50			5.28	10.56	11.09
2.0		2.6	7.0			2.10	2.70	7.61			6.21	12.41	13.03
2.0		3.5	3.5			2.40	3.90	4.05			5.18	10.35	10.87
2.0		3.5	5.0			2.20	3.70	5.13			5.51	11.03	11.58
2.0		3.5	7.0			2.10	3.60	6.43			6.06	12.13	12.73
2.0		5.0	5.0			2.10	5.07	5.07			6.12	12.24	12.85
2.6		2.6	2.6			3.12	3.12	3.12			4.68	9.36	10.30
2.6		2.6	3.5			2.80	2.80	3.97			4.79	9.57	10.53
2.6		2.6	5.0			2.65	2.65	5.41			5.36	10.71	11.78
2.6		2.6	7.0			2.76	2.76	6.92			6.22	12.44	13.07
2.6		3.5	3.5			2.90	3.83	3.83			5.28	10.56	11.62
2.6		3.5	5.0			2.70	3.70	5.26			5.83	11.66	12.24
2.6		3.5	7.0			2.50	3.45	6.50			6.22	12.45	13.07
2.6	5.0	5.0			2.40	4.91	4.91			6.11	12.22	12.83	
3.5	3.5	3.5			3.85	3.85	3.85			5.78	11.55	12.13	
3.5	3.5	5.0			3.55	3.55	4.90			6.00	12.00	12.60	

For outdoor unit:

KM46 – 12.0kW

Cooling

	Indoor Unit Combinations (kW)					Rated Capacity (kW)					Total Cooling Capacity (kW)		
	Unit A	Unit B	Unit C	Unit D	Unit E	Unit A	Unit B	Unit C	Unit D	Unit E	Min. data	Rated data	Max. data
4 Unit Comb.	2	2	2	2		2.28	2.28	2.28	2.28		4.56	9.12	10.03
	2	2	2	2.6		2.21	2.21	2.21	2.83		4.73	9.46	10.41
	2	2	2	3.5		2.1	2.1	2.1	3.68		4.99	9.98	10.97
	2	2	2	5		2.05	2.05	2.05	4.3		5.23	10.45	11.50
	2	2	2	7		1.75	1.75	1.75	5.8		5.53	11.05	11.27
	2	2	2.6	2.6		2.1	2.1	2.73	2.73		4.83	9.66	10.63
	2	2	2.6	3.5		2.05	2.05	2.7	3.6		5.20	10.40	11.44
	2	2	2.6	5		1.9	1.9	2.5	4.37		5.34	10.67	11.74
	2	2	2.6	7		1.85	1.85	2.4	5.94		6.02	12.04	12.28
	2	2	3.5	3.5		1.9	1.9	3.32	3.33		5.23	10.45	11.50
	2	2	3.5	5		1.8	1.8	3.2	4.45		5.63	11.25	12.38
	2	2	3.5	7		1.8	1.8	3.1	5.63		6.16	12.33	13.56
	2	2	5	5		1.85	1.85	4.1	4.1		5.95	11.90	12.14
	2	2.6	2.6	2.6		2.13	2.72	2.72	2.72		5.15	10.29	10.50
	2	2.6	2.6	3.5		1.95	2.55	2.55	3.44		5.24	10.49	10.70
	2	2.6	2.6	5		1.9	2.5	2.5	4.08		5.49	10.98	11.20
	2	2.6	2.6	7		1.8	2.5	2.5	5.98		6.39	12.78	13.04
	2	2.6	3.5	3.5		1.9	2.45	3.22	2.87		5.22	10.44	10.65
	2	2.6	3.5	5		1.8	2.3	2.9	4.79		5.90	11.79	12.03
	2	2.6	5	5		1.6	2.2	3.94	3.94		5.84	11.68	11.91
	2	3.5	3.5	3.5		1.83	3.14	3.14	3.14		5.63	11.25	11.48
	2	3.5	3.5	5		1.8	3.1	3.1	3.9		5.95	11.90	12.14
	2	2	5	7		1.85	1.85	4.1	5.88		6.84	13.68	13.95
	2	2.6	5	7		1.83	2.34	4.08	5.86		7.06	14.11	14.39
	2	3.5	3.5	7		1.8	3.1	3.1	5.6		6.80	13.60	13.87
	2.6	2.6	2.6	2.6		2.58	2.57	2.57	2.58		5.15	10.30	10.50
	2.6	2.6	2.6	3.5		2.52	2.52	2.52	3.4		5.48	10.96	11.18
	2.6	2.6	2.6	5		2.4	2.4	2.4	4.06		5.63	11.26	11.49
	2.6	2.6	2.6	7		2.3	2.3	2.3	6.12		6.51	13.02	13.28
	2.6	2.6	3.5	3.5		2.3	2.3	3.07	3.07		5.37	10.74	10.95
	2.6	2.6	3.5	5		2.3	2.3	3.1	3.95		5.82	11.65	11.88
	2.6	2.6	3.5	7		2.3	2.3	3.1	4.54		5.28	13.82	15.4
	2.6	2.6	5	5		2.5	2.5	4.54	4.54		5.28	14.06	15.4
	2.6	2.6	5	7		2.34	2.34	4.25	5.86		5.27	14.8	16.2
	2.6	3.5	3.5	3.5		2.3	3.1	3.1	4.6		6.55	13.10	13.36
	2.6	3.5	3.5	5		2.3	3.1	3.1	6.6		7.55	15.10	15.40
	3.5	3.5	3.5	3.5		3.33	3.33	3.33	3.33		6.65	13.30	13.57
	3.5	3.5	3.5	5		3.3	3.3	3.3	3.35		6.63	13.25	13.52
	3.5	3.5	3.5	7		3.09	3.09	3.09	5.43		7.35	14.70	14.99

Heating

	Indoor Unit Combinations (kW)					Rated Capacity (kW)					Total Heating Capacity (kW)		
	Unit A	Unit B	Unit C	Unit D	Unit E	Unit A	Unit B	Unit C	Unit D	Unit E	Min. data	Rated data	Max. data
4 Unit Comb.	2	2	2	2		2.4	2.4	2.4	2.4		4.80	9.60	10.56
	2	2	2	2.6		2.2	2.2	2.2	2.86		4.73	9.46	10.41
	2	2	2	3.5		2.2	2.2	2.2	3.85		5.23	10.45	11.50
	2	2	2	5		2.05	2.05	2.05	5.18		5.67	11.33	12.46
	2	2	2	7		2	2	2	7		6.50	13.00	13.26
	2	2	2.6	2.6		2.2	2.2	2.86	2.86		5.06	10.12	11.13
	2	2	2.6	3.5		2.2	2.2	2.9	3.81		5.56	11.11	12.22
	2	2	2.6	5		2.1	2.1	2.8	4.83		5.92	11.83	13.02
	2	2	2.6	7		2	2	2.6	7.03		6.81	13.63	13.90
	2	2	3.5	3.5		2.03	2.03	3.75	3.75		5.78	11.55	12.71
	2	2	3.5	5		2.02	2.02	3.4	4.69		6.06	12.13	13.34
	2	2	3.5	7		2.02	2.02	3.4	6.63		7.03	14.07	15.47
	2	2	5	5		2	2	4.86	4.86		6.86	13.72	13.99
	2	2.6	2.6	2.6		2.2	2.86	2.86	2.86		5.39	10.78	11.00
	2	2.6	2.6	3.5		2.2	2.7	2.7	3.64		5.62	11.24	11.46
	2	2.6	2.6	5		2.1	2.5	2.5	5.16		6.13	12.26	12.51
	2	2.6	2.6	7		2.1	2.5	2.5	7.17		7.14	14.27	14.56
	2	2.6	3.5	3.5		2.13	2.7	3.5	3.5		5.92	11.83	12.07
	2	2.6	3.5	5		1.9	2.5	3.4	5.34		6.57	13.14	13.40
	2	2.6	5	5		1.85	2.48	4.99	4.99		7.15	14.31	14.59
	2	3.5	3.5	3.5		2.11	3.34	3.34	3.34		6.06	12.13	12.37
	2	3.5	3.5	5		1.9	3.2	3.2	4.3		6.30	12.60	12.85
	2	2	5	7		2.35	2.35	4.64	6.48		7.91	15.82	16.14
	2	2.6	5	7		2.35	2.65	4.61	6.47		8.04	16.08	16.40
	2	3.5	3.5	7		2.35	3.55	3.55	6.69		8.07	16.14	16.46
	2.6	2.6	2.6	2.6		2.7	2.7	2.7	2.7		5.41	10.82	11.03
	2.6	2.6	2.6	3.5		2.62	2.62	2.62	3.58		5.72	11.44	11.66
	2.6	2.6	2.6	5		2.6	2.6	2.6	5.15		6.48	12.95	13.21
	2.6	2.6	2.6	7		2.6	2.6	2.6	5.52		6.66	13.32	13.59
	2.6	2.6	3.5	3.5		2.62	2.62	3.6	3.6		6.22	12.44	12.69
	2.6	2.6	3.5	5		2.6	2.6	3.5	5.12		6.91	13.82	14.10
	2.6	2.6	3.5	7		2.6	2.6	3.5	6.22		7.46	14.92	15.21
	2.6	2.6	5	5		2.64	2.64	4.69	4.68		5.21	14.65	14.94
	2.6	2.6	5	7		2.49	2.49	4.4	6.16		5.21	15.54	15.85
	2.6	3.5	3.5	3.5		2.62	3.58	3.58	3.58		6.68	13.36	13.63
	2.6	3.5	3.5	5		2.4	3.5	3.5	5.49		7.45	14.89	15.19
	3.5	3.5	3.5	3.5		3.57	3.57	3.57	3.57		7.14	14.28	14.57
	3.5	3.5	3.5	5		3.57	3.57	3.57	5.1		7.91	15.81	16.13
	3.5	3.5	3.5	7		3.55	3.55	3.55	6.15		8.40	16.80	17.14

For outdoor unit:

KM46 – 12.0kW

Cooling

	Indoor Unit Combinations (kW)					Rated Capacity (kW)					Total Cooling Capacity (kW)		
	Unit A	Unit B	Unit C	Unit D	Unit E	Unit A	Unit B	Unit C	Unit D	Unit E	Min. data	Rated data	Max. data
5 Unit Comb.	2	2	2	2	2	2.27	2.27	2.27	2.27	2.27	5.68	11.35	11.92
	2	2	2	2	2.6	2.24	2.24	2.24	2.24	2.68	5.86	11.71	12.30
	2	2	2	2	3.5	2.23	2.23	2.23	2.23	3.7	6.31	12.63	13.26
	2	2	2	2	5	2.13	2.13	2.13	2.13	4.81	6.66	13.33	13.99
	2	2	2	2.6	2.6	2.24	2.24	2.24	2.69	2.69	6.05	12.11	12.71
	2	2	2	2.6	3.5	2.21	2.21	2.21	2.68	3.52	6.41	12.83	13.47
	2	2	2	2.6	5	2.11	2.11	2.11	2.63	4.62	6.79	13.58	14.26
	2	2	2	3.5	3.5	2.08	2.08	2.08	3.5	3.5	6.62	13.23	13.90
	2	2	2.6	2.6	2.6	2.25	2.25	2.7	2.7	2.7	6.30	12.60	13.23
	2	2	2.6	2.6	3.5	2.22	2.22	2.7	2.7	3.5	6.67	13.34	14.00
	2	2	2.6	3.5	3.5	2.11	2.11	2.65	3.33	3.33	6.77	13.53	14.21
	2	2	3.5	3.5	3.5	2	2	3.25	3.25	3.25	6.87	13.75	14.43
	2	2.6	2.6	2.6	2.6	2.16	2.65	2.65	2.65	2.65	6.38	12.76	13.40
	2	2.6	2.6	2.6	3.5	2.12	2.61	2.61	2.61	3.5	6.73	13.45	14.12
	2	2.6	2.6	3.5	3.5	1.91	2.5	2.5	3.38	3.38	6.83	13.66	14.34
	2	2.6	3.5	3.5	3.5	1.9	2.48	3.16	3.16	3.16	6.93	13.86	14.55
	2	2	2.6	3.5	5	2.16	2.16	2.63	3.52	4.92	7.70	15.39	16.16
	2	2.6	3.5	3.5	5	2.03	2.45	3.06	3.06	4.67	7.64	15.27	16.04
	2	2.6	2.6	2.6	5	2.05	2.47	2.47	2.47	4.23	6.85	13.69	14.37
	2	2	2	3.5	5	2.06	2.06	2.06	3.05	4.55	6.89	13.78	14.46
	2	2	2	5	5	1.9	1.9	1.9	4.45	4.45	7.30	14.59	15.32
	2	2.6	3.5	3.5	5	1.9	2.48	3.16	3.16	4.41	7.55	15.11	15.86
	2	3.5	3.5	3.5	3.5	1.9	3.21	3.21	3.21	3.21	7.37	14.74	15.47
	2	3.5	3.5	3.5	5	1.9	3.05	3.05	3.05	4.18	7.61	15.23	15.99
	2.6	2.6	2.6	2.6	2.6	2.63	2.63	2.63	2.63	2.63	6.57	13.13	13.79
	2.6	2.6	2.6	2.6	3.5	2.55	2.55	2.55	2.55	3.3	6.75	13.50	14.18
	2.6	2.6	2.6	2.6	5	2.37	2.37	2.37	2.37	4.38	5.30	13.86	16.11
	2.6	2.6	2.6	3.5	3.5	2.45	2.45	2.45	3.28	3.28	6.96	13.92	14.61
	2.6	2.6	3.5	3.5	3.5	2.41	2.41	3.21	3.21	3.21	7.22	14.44	15.17
	2.6	3.5	3.5	3.5	3.5	2.39	3.2	3.2	3.2	3.2	7.59	15.19	15.95
	2.6	2.6	2.6	3.5	5	2.34	2.34	2.34	3.18	4.8	7.50	15.00	15.75
	2.6	2.6	3.5	3.5	5	2.32	2.32	3.16	3.16	4.73	7.84	15.69	16.47
	2.6	3.5	3.5	3.5	5	2.27	3.09	3.09	3.09	4.39	7.96	15.93	16.72
	2.6	2.6	3.5	3.5	5	2.42	2.42	3.01	3.01	4.28	7.57	15.14	15.89
	3.5	3.5	3.5	3.5	3.5	3.19	3.19	3.19	3.19	3.19	7.98	15.95	16.75

Heating

	Indoor Unit Combinations (kW)					Rated Capacity (kW)					Total Heating Capacity (kW)		
	Unit A	Unit B	Unit C	Unit D	Unit E	Unit A	Unit B	Unit C	Unit D	Unit E	Min. data	Rated data	Max. data
5 Unit Comb.	2	2	2	2	2	2.5	2.5	2.5	2.5	2.5	6.25	12.50	13.13
	2	2	2	2	2.6	2.5	2.5	2.5	2.5	3.04	6.52	13.04	13.69
	2	2	2	2	3.5	2.48	2.48	2.48	2.48	3.67	6.80	13.59	14.27
	2	2	2	2	5	2.45	2.45	2.45	2.45	4.27	7.03	14.07	14.77
	2	2	2	2.6	2.6	2.38	2.38	2.38	3.05	3.05	6.62	13.24	13.90
	2	2	2	2.6	3.5	2.32	2.32	2.32	2.95	3.67	6.79	13.58	14.26
	2	2	2	2.6	5	2.26	2.26	2.26	2.88	5.06	7.35	14.70	15.44
	2	2	2	3.5	3.5	2.35	2.35	2.35	3.51	3.51	7.03	14.07	14.77
	2	2	2.6	2.6	2.6	2.32	2.32	2.83	2.83	2.83	6.56	13.12	13.78
	2	2	2.6	2.6	3.5	2.26	2.26	2.82	2.82	3.59	6.87	13.74	14.43
	2	2	2.6	3.5	3.5	2.24	2.24	2.8	3.71	3.71	7.35	14.70	15.44
	2	2	3.5	3.5	3.5	2.22	2.22	3.7	3.7	3.7	7.77	15.54	16.32
	2	2.6	2.6	2.6	2.6	2.29	2.89	2.89	2.89	2.89	6.91	13.83	14.52
	2	2.6	2.6	2.6	3.5	2.26	2.82	2.82	2.82	3.56	7.14	14.28	15.00
	2	2.6	2.6	3.5	3.5	2.23	2.79	2.79	3.55	3.55	7.46	14.91	15.66
	2	2.6	3.5	3.5	3.5	2.21	2.75	3.53	3.53	3.53	7.78	15.55	16.33
	2	2	2.6	3.5	5	2.18	2.18	2.68	3.26	5.32	7.81	15.62	16.40
	2	2.6	3.5	3.5	5	2.14	2.51	3.12	3.12	4.95	7.92	15.84	16.63
	2	2.6	2.6	2.6	5	2.16	2.55	2.55	2.55	5.46	7.64	15.27	16.04
	2	2	2	3.5	5	2.23	2.23	2.23	3.1	5.17	7.48	14.96	15.71
	2	2	2	5	5	2.16	2.16	2.16	4.68	4.68	7.91	15.82	16.61
	2	2.6	3.5	3.5	5	2.16	2.55	3.43	3.43	4.52	8.04	16.08	16.89
	2	3.5	3.5	3.5	3.5	2.22	3.48	3.48	3.48	3.48	8.07	16.14	16.95
	2	3.5	3.5	3.5	5	2.16	3.43	3.43	3.43	4.35	8.40	16.80	17.64
	2.6	2.6	2.6	2.6	2.6	2.81	2.81	2.81	2.81	2.81	7.03	14.07	14.77
	2.6	2.6	2.6	2.6	3.5	2.79	2.79	2.79	2.79	3.54	7.35	14.70	15.44
	2.6	2.6	2.6	2.6	5	2.67	2.67	2.67	2.67	5.34	5.76	16.02	16.60
	2.6	2.6	2.6	3.5	3.5	2.78	2.78	2.78	3.51	3.51	7.68	15.35	16.12
	2.6	2.6	3.5	3.5	3.5	2.76	2.76	3.5	3.5	3.5	8.01	16.01	16.81
	2.6	3.5	3.5	3.5	3.5	2.75	3.48	3.48	3.48	3.48	8.33	16.67	17.50
	2.6	2.6	2.6	3.5	5	2.61	2.61	2.61	3.25	5.22	8.15	16.30	17.12
	2.6	2.6	3.5	3.5	5	2.56	2.56	3.22	3.22	5.12	8.34	16.68	17.52
	2.6	3.5	3.5	3.5	5	2.49	3.16	3.16	3.16	5.04	8.51	17.01	17.86
	2.6	2.6	3.5	3.5	5	2.55	2.55	3.41	3.41	4.59	8.26	16.51	17.34
	3.5	3.5	3.5	3.5	3.5	3.46	3.46	3.46	3.46	3.45	8.65	17.29	18.15

kaden°

your perfect climate

www.kadenair.com.au

Due to limitations in the printing process the colours in this brochure are a guide only.
The manufacturer/distributor reserves the right to vary specifications or delete models from their range without prior notification. The manufacturer/distributor takes no responsibility for printing errors.
All products enjoy a product replacement warranty. For full warranty details visit www.kadenair.com.au

V1 [BROCHURE CODE 2111029]

metalflex™

ACTROL™

reece hvac