

# MIZU

## SOOTHE EXTENDED BASIN MIXER

### Installation Instructions

### INSTALLATION

#### Important Note

Mixer must be installed to the requirements of AZ/NZS 3500 by a licenced plumber. Your mixer comes to you already factory assembled and tested. We do not recommend the dismantling of any internal part of the mixer. The mixers are factory tested and sealed so as to give the best performance.

1. Please ensure pipework is clear of debris by flushing the lines prior to commencing the installation of the mixer.
2. Attach flexible tails (19, 20) to the mixer; connecting the blue labelled hose to the cold 'C' inlet and red labelled hose to the hot 'H' inlet. Tighten the hoses using a shifter.

**NOTE: Do not twist hose braiding to tighten hoses.**

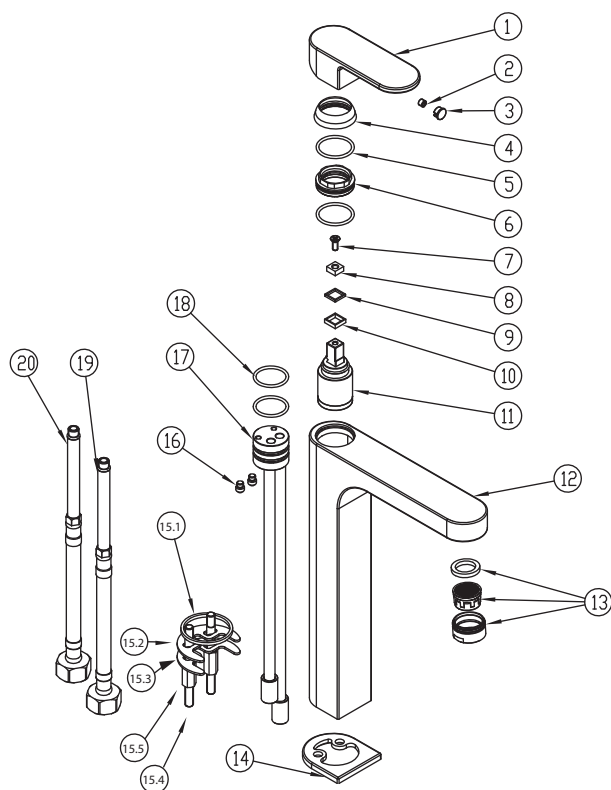
3. Attach fixing rods (15.4) to the bottom of the mixer.
4. Thread the flexible hoses through the dress ring (14) and sealing washer (15.1).
5. Thread the flexible hoses through the tap mounting hole and position the sealing washer and dress ring. Sit the mixer down over the dress ring.

6. From the underside, thread the flex hoses through the bottom O-ring and apply the horse shoe plate (15.3).
7. Slide the O-ring and horse shoe plate to the top, ensuring the O-ring is seated correctly in the groves on the horse shoe plate. Locate horse shoe plate onto the fixing rods and install hex nuts (15.5) onto the fixing rods. Ensure mixer is positioned and seated correctly before tightening the hex nuts.
8. Connect flexible hose tails to the isolating stops (Arco).
9. Open the isolation stops and check the mixer's operation

### SERVICING - CARTRIDGE REPLACEMENT

1. Remove decorative cover (3) and unscrew the grub screw (2) using allen key.
2. Lift off handle and remove the cartridge dome (4), unscrew brass locking nut (6) and lift out cartridge (11).
3. Replace the cartridge (11), replace the brass locking nut (6), replace the cartridge dome (4) and replace handle. Tighten grub screw (2) and push in decorative cover (3).

### EXPLODED VIEW



Item	Description
1	Mixer Handle
2	Grub Screw
3	Decorative Cover
4	Cartridge Dome
5	O Ring
6	Cartridge Lock Nut
7	Fixing Screw
8-10	Washers
11	Cartridge
12	Mixer Body
13	Aerator Complete
14	Dress Ring
15	
15.1	O Ring
15.2	Rubber Seal
15.3	Horse Shoe Plate
15.4	Fixing Rods
15.5	Hex Nuts
16	Fixing Pins
17	Cartridge Mounting Block
18	O-Rings
19	Flexible Hose (Cold)
20	Flexible Hose (Hot)

Plumbers, please ensure a copy of the installation instructions is left with the end user for future reference

Published 23/04/2021