

KADO

LUX ALL DRAWER - FLOOR MOUNT VANITY



12mm benchtop / 50mm Shaker

20mm benchtop / 50mm Shaker
Prime Oak Woodgrain finish

20mm benchtop / 20mm Shaker



50mm benchtop / 50mm Shaker



90mm benchtop / 50mm Shaker

SPECIFICATIONS

Recommended Use	Domestic, Hotel and Commercial
Vanity Top Material	12mm Durasein, 20mm Cherry Pie or 20mm Caesarstone Mineral (Surcharge applies). 50mm or 90mm Thick Benchtop available. Basin sold separately. For more information please refer to the Colour Finish and Material Variations Document.
Vanity Unit Material	MDF MR E0 (Medium Density Fibreboard, Moisture Resistant, Rated Emission Level E0)
Vanity Colour Variations	Matte White, Matte Feather Grey, and Matte Black Polyurethane (20 or 50mm shaker) Prime Oak Woodmatt Textured Woodgrain (50mm shaker only) For more information please refer to the Colour Finish and Material Variations Document. (Custom polyurethane colours available, incurs a surcharge).
Interior Finish	Graphite Grey
Tap Hole Availability	0, 1 or 3 Tap Holes (pending basin selection)
Waste	Chrome Universal Plug & Waste 40mm Outlet (included). *Note: Recommended trap DURA Short Trap.
Fixing	Bolted/Screwed to the wall by a licensed tradesperson- Fixings not included.
Drawers/Inclusions	ADP Premium Soft-Close drawers.
Options	Choose from: Round Cross Bar, Blaze, Seashell, Aria or Francis Handles. (Prime Oak available with Round Cross Bar only) For finishes available refer to the Colour Finish and Material Variations Document.

To see the complete KADO range go to www.reece.com.au/bathrooms

Disclaimer: Products in this specification manual must by regulation be installed by licensed and registered trade people. The manufacturer/distributor reserves the right to vary specifications or delete models from their range without prior notification. Dimensions are nominal measurements only. Dimensions and set-outs listed are correct at time of publication however the manufacturer/distributor takes no responsibility for printing errors.

Tech Page Version 3

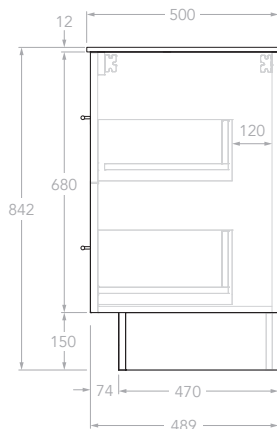
KADO

LUX ALL DRAWER - FLOOR MOUNT VANITY

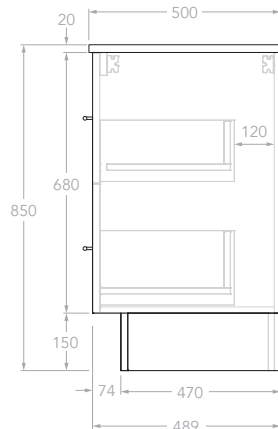
STANDARD SIZES	600mm	750mm	900mm	1200mm Centre	1200mm Double	1500mm Centre	1500mm Double	1800mm Centre	1800mm Double
Width (mm)	600	750	900	1200	1200	1500	1500	1800	1800
Depth (mm)	500	500	500	500	500	500	500	500	500
Height (mm) - 12mm Benchtop (Durasein Only)	842	842	842	842	842	842	842	842	842
Height (mm) - 20mm Benchtop (Cherry Pie / Caesarstone Mineral)	850	850	850	850	850	850	850	850	850
Height (mm) - 50mm Benchtop (All benchtop options)	880	880	880	880	880	880	880	880	880
Height (mm) - 90mm Benchtop (All benchtop options)	920	920	920	920	920	920	920	920	920
Number of Drawers	2	2	2	2	4	4	4	4	4
Basin Configurations	Centre	Centre	Centre	Centre	Double	Centre	Double	Centre	Double

Side View - With Benchtop Options

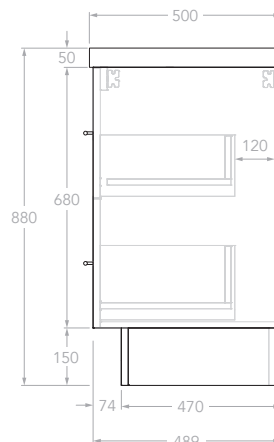
12mm
(Durasein)



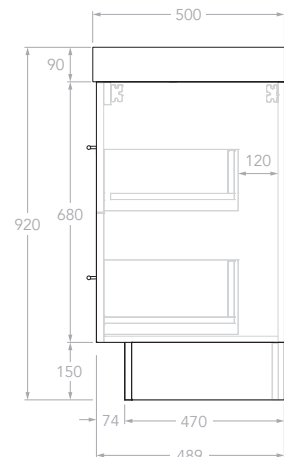
20mm
(Cherry Pie & Caesarstone Mineral)



50mm
(All benchtop options)



90mm
(All benchtop options)



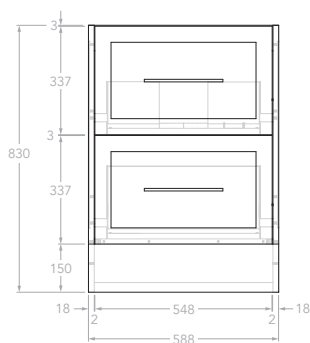
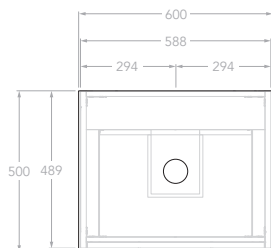
KADO

LUX ALL DRAWER - FLOOR MOUNT VANITY

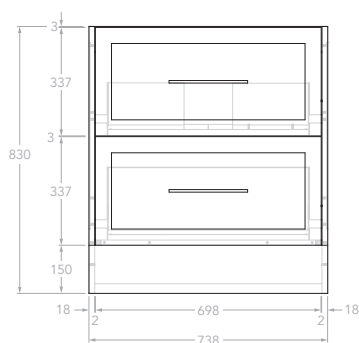
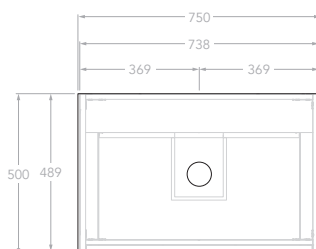
Below Front View specs are for cabinet details only, refer to page 2 for overall heights and benchtop options.

600mm

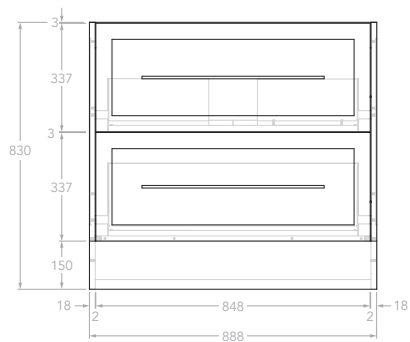
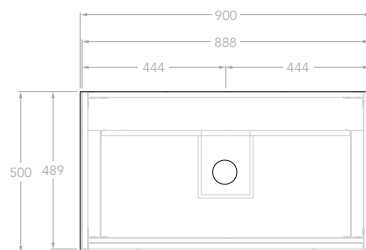
Front View

Top View
Centre**750mm**

Front View

Top View
Centre**900mm**

Front View

Top View
Centre

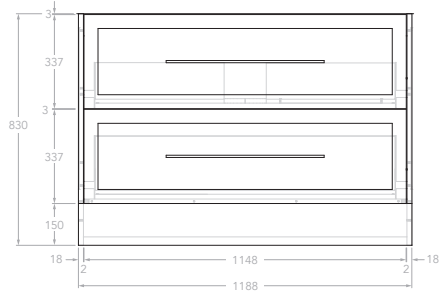
KADO

LUX ALL DRAWER - FLOOR MOUNT VANITY

Below Front View specs are for cabinet details only, refer to page 2 for overall heights and benchtop options.

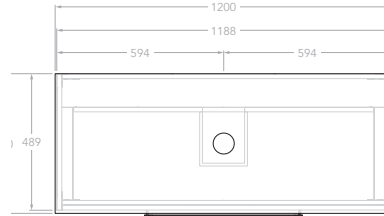
1200mm

Front View



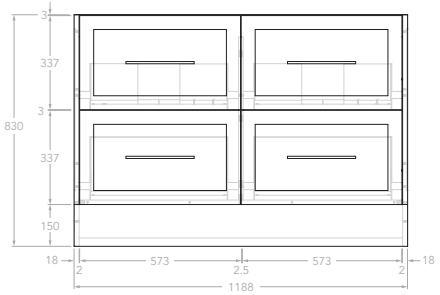
Top View

Centre



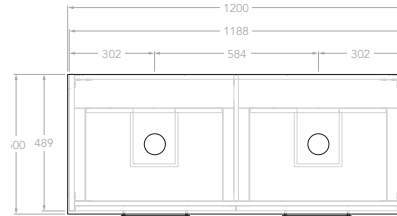
1200mm

Front View



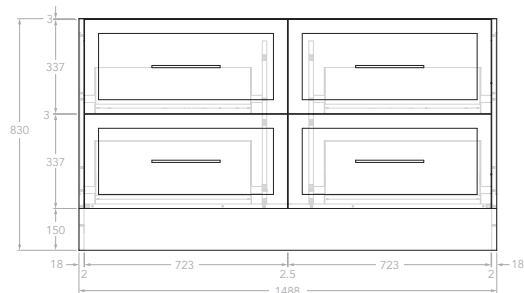
Top View

Double



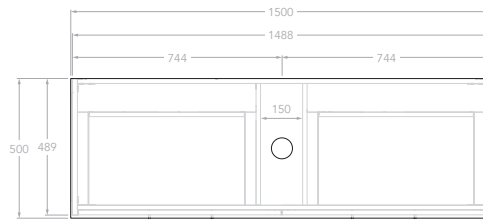
1500mm

Front View



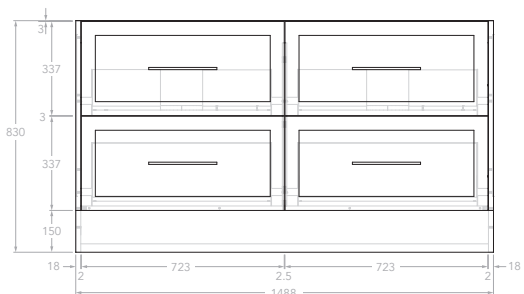
Top View

Centre



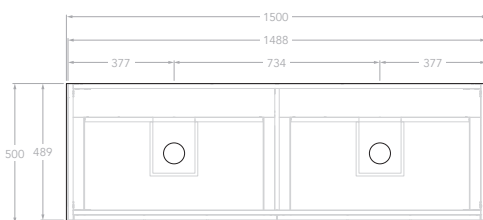
1500mm

Front View



Top View

Double

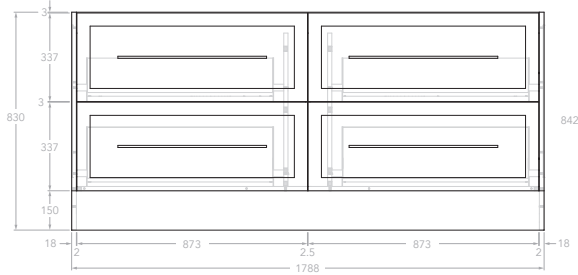


KADO

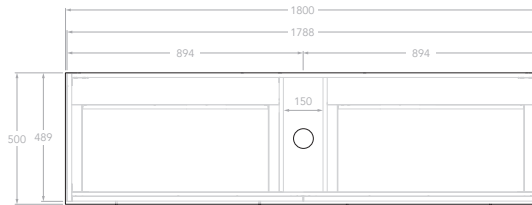
LUX ALL DRAWER - FLOOR MOUNT VANITY

Below Front View specs are for cabinet details only, refer to page 2 for overall heights and benchtop options.

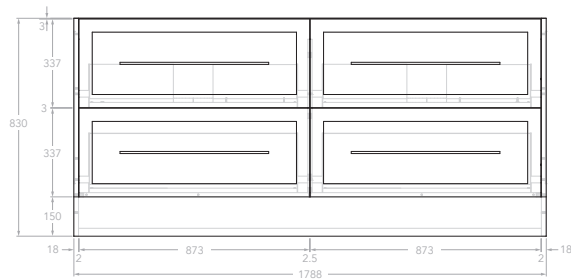
1800mm
Front View



Top View
Centre



1800mm
Front View



Top View
Double

