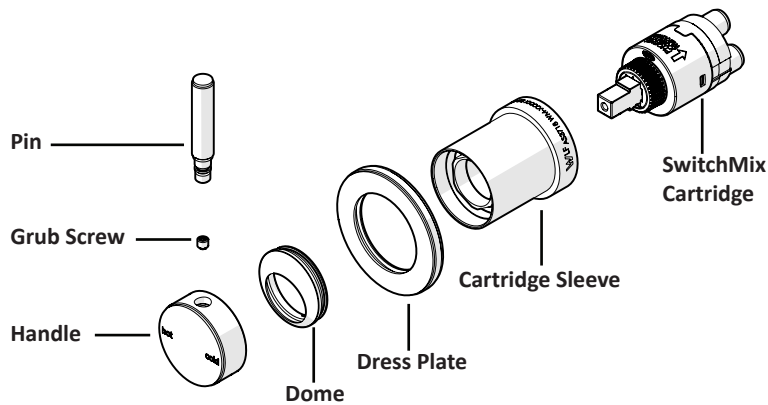




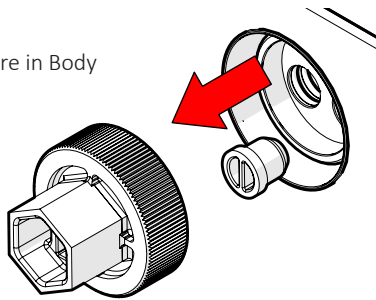
## Milli Etch Shower Mixer Tap Trimset



Product complies with the Lead-free requirements of the national construction code volume 3

- 1** Remove Test Cap using a Flat Head Screw Driver or spanner.

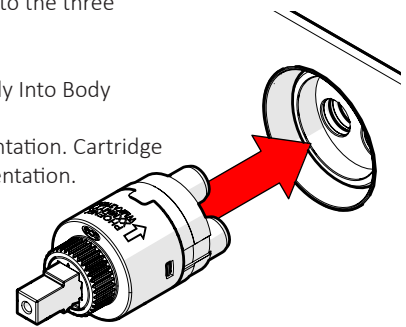
Ensure that no Test Plugs are in Body



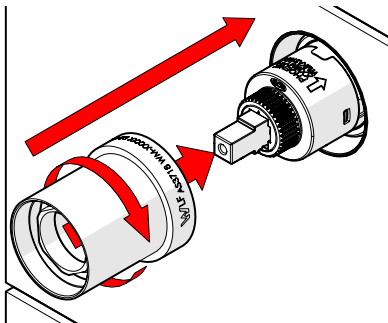
- 2** Add Grease or Soap to the three Cartridge legs.

Push Cartridge Gently Into Body

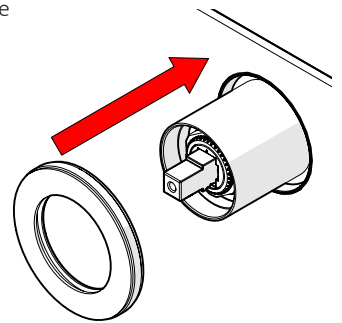
Ensure Correct Orientation. Cartridge Only Fits in One Orientation.



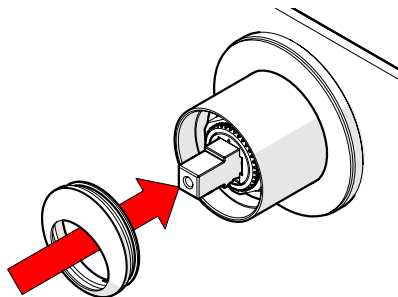
- 3** Firmly fasten Cartridge Sleeve to Mixer Body using a 1" Tube spanner.



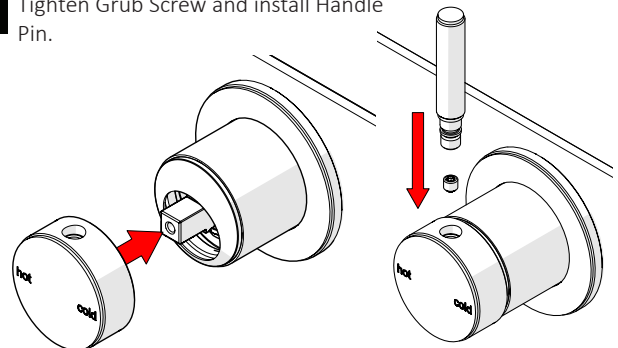
- 4** Push Dress Plate over Cartridge Sleeve.



- 5** Install dome as shown below.



- 6** Tighten Grub Screw and install Handle Pin.



### Care Details

We recommend the use of soapy water or approved cleaners. This product should not be cleaned with abrasive materials. Damage caused by any improper treatment is not covered by the product warranty. Refer to Warranty Conditions

Installation should comply with Australian standard AS3500.1 or relevant local authority requirements. Showers may not be suitable for use within:

- Gravity-fed water systems
- Some instantaneous hot water systems

Any flow controller incorporated in the outlet to be tightened to prevent removal by hand. As Per AS3718

**Plumbers, please ensure a copy of the installation instruction is left with the end user for future reference.**

