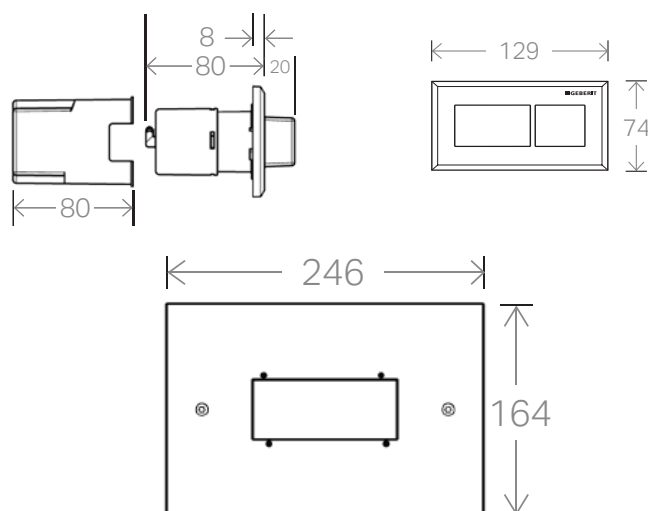


■ GEBERIT

SIGMA PNEUMATIC CARE BUTTON & SERVICE ACCESS PANEL (OPTIONAL)



To see the complete Geberit range go to:
www.reece.com.au/bathrooms

Service access panel is required for inwall installations.

SPECIFICATIONS

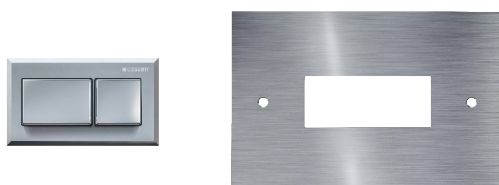
Operation	Pneumatic, Remote or Inwall
Application	Dual-flush
Colour range	Bright chrome
Product material	ABS
Compatibility	Suits Sigma 120 and Sigma 75 Pneumatic cisterns
	BTW and care compliant pans

Remote installation requires access to service the cistern.

FEATURES & BENEFITS

15 year warranty	Peace of mind
Raised buttons	AS 1428.1 Compatible
25 year spare parts availability guarantee	Serviceable for the life of your bathroom
Vandal resistant	Perfect for commercial buildings
Inwall or remote installation	Greater design flexibility
Small button	Fits any bathroom style
Easy to clean	Finger prints can be removed easily

COLOUR OPTIONS



Sigma Pneumatic Care, Bright Chrome
Sigma Access Plate

9505488
9505489

CLEANING INSTRUCTIONS

You have selected a Geberit product with a high-grade surface. Please follow the cleaning instructions so that your Geberit product will give you many years of pleasure.

Never use aggressive cleaners that contain chlorine, are acidic, abrasive or corrosive. Only use water and a mild cleaning agent.

1. Clean the unit with a soft cloth soaked in water.
2. Dry with a soft cloth.

The unit warranty does not cover damage arising from improper treatment with cleaning agents.

Disclaimer: Products in this specification manual must by regulation be installed by licensed and registered trade people. The manufacturer/distributor reserves the right to vary specifications or delete models from their range without prior notification. Dimensions and set-outs listed are correct at time of publication however the manufacturer/distributor takes no responsibility for printing errors.

Tech Page Version 2 – 2015



SIGMA PNEUMATIC CARE BUTTON & SERVICE ACCESS PANEL (OPTIONAL)

INSTALLATION INSTRUCTIONS

Sigma120 – Pneumatic Conversion

Access plate for inwall installations

Remote Button Installation

3

Sigma 120 mm

1

2

GEBERIT COMPATABILITY GUIDE

COMPATABILITY	MECHANICAL	PNEUMATIC	ELECTRONIC
CISTERN	Sigma75 Sigma120 Under Counter 150	Sigma75 Pneumatic Sigma120	Sigma120
BUTTON			

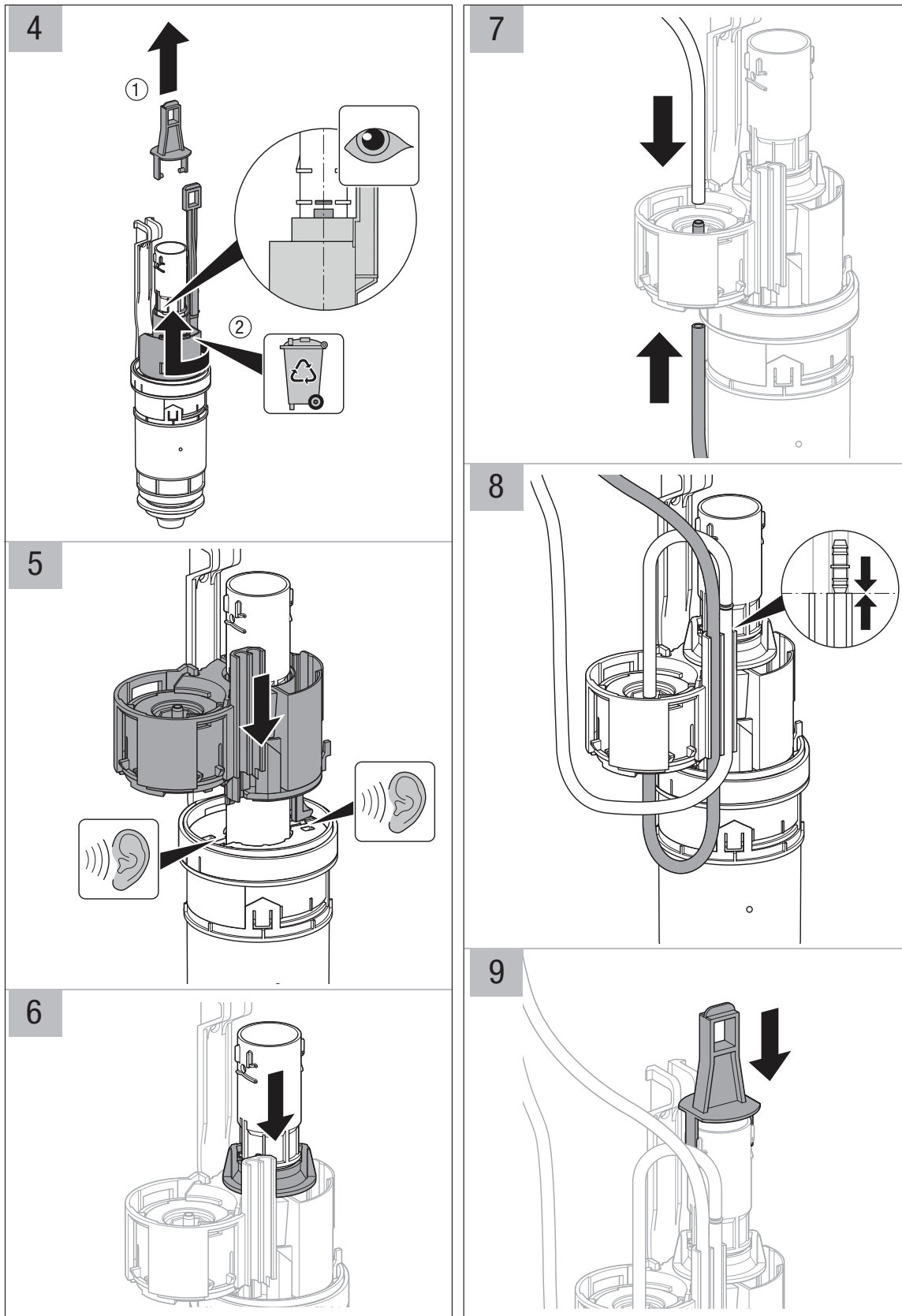
Plumbers, please ensure a copy of the installation instructions is left with the end user for future reference



■ GEBERIT

SIGMA PNEUMATIC CARE BUTTON & SERVICE ACCESS PANEL (OPTIONAL)

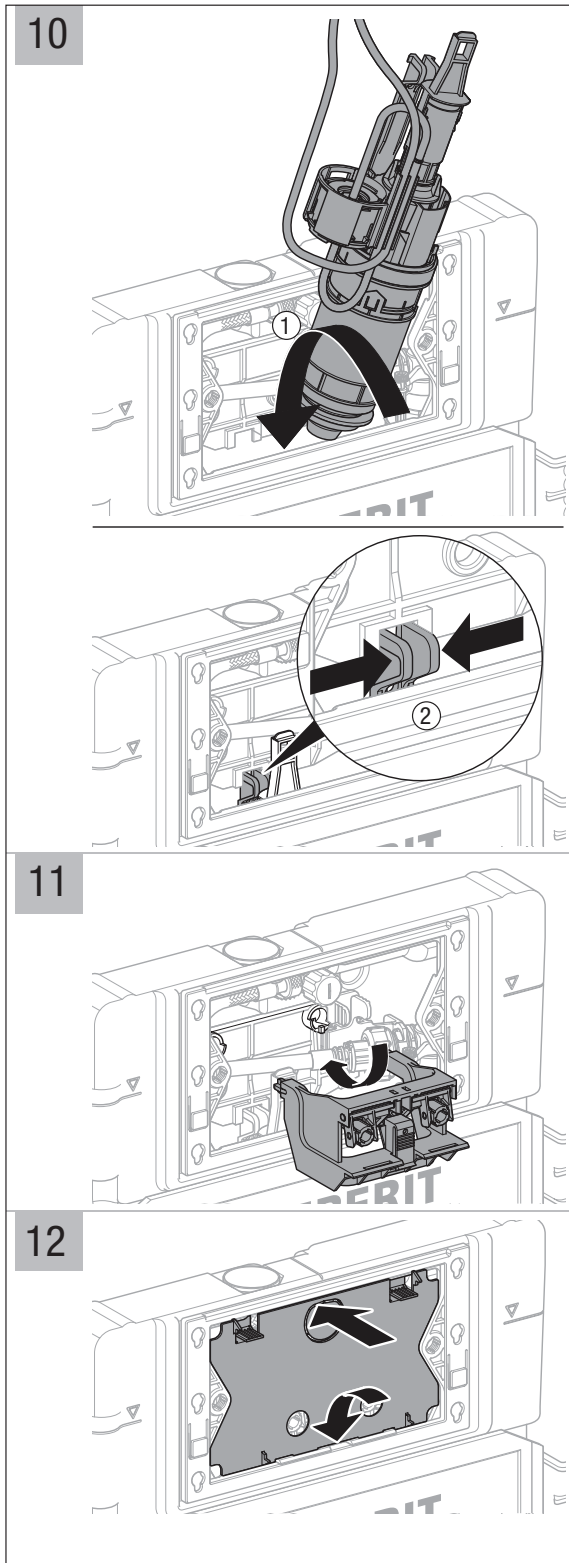
INSTALLATION INSTRUCTIONS – SIGMA 120 PNEUMATIC CONVERSION



Plumbers, please ensure a copy of the installation instructions is left with the end user for future reference

■ GEBERIT

reece™

■ GEBERIT**SIGMA PNEUMATIC CARE BUTTON
& SERVICE ACCESS PANEL (OPTIONAL)****INSTALLATION INSTRUCTIONS – SIGMA 120 PNEUMATIC CONVERSION**

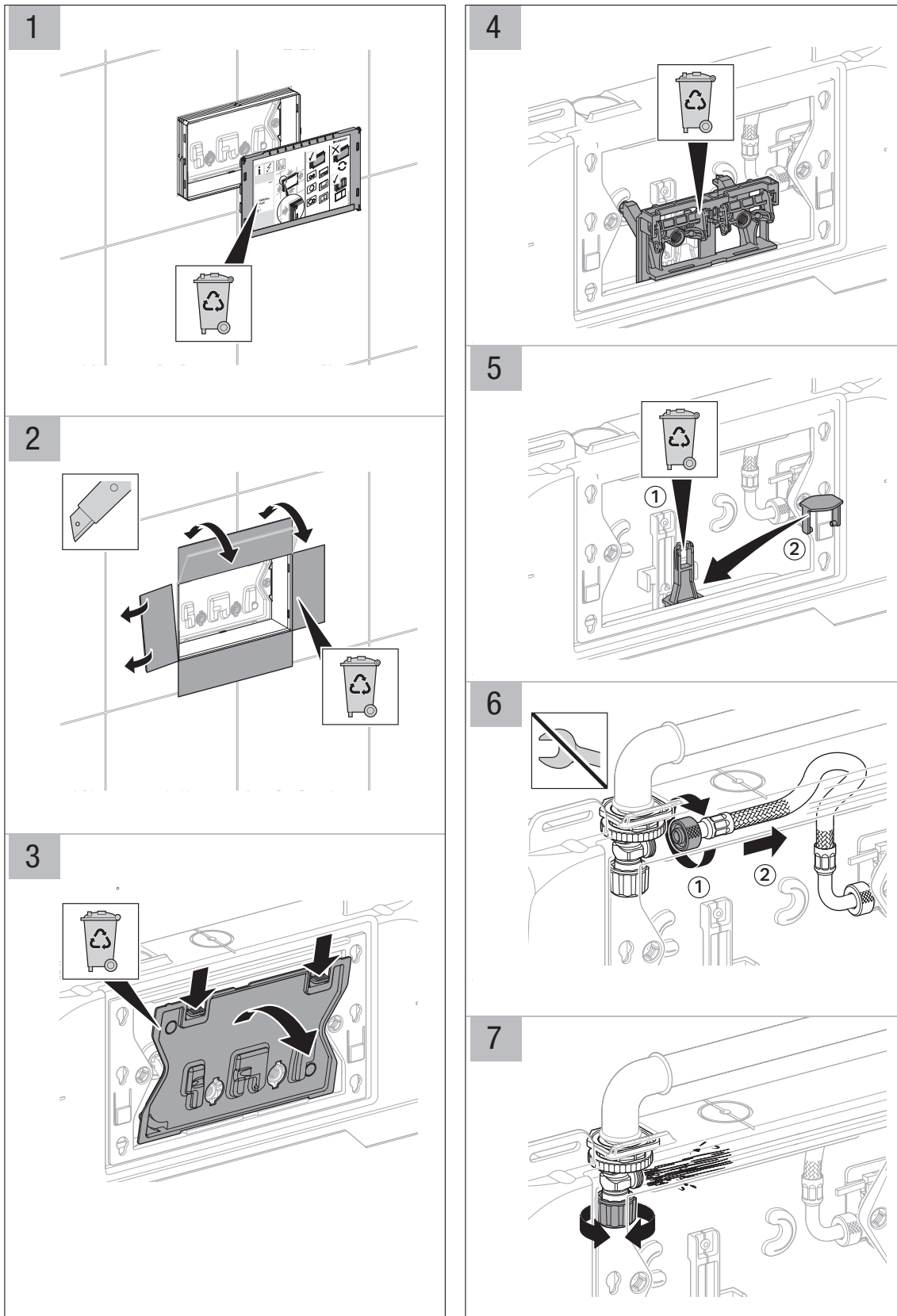
Plumbers, please ensure a copy of the installation instructions is left with the end user for future reference

■ GEBERIT**reece™**

■ GEBERIT

SIGMA PNEUMATIC CARE BUTTON & SERVICE ACCESS PANEL (OPTIONAL)

INWALL INSTALLATION WITH ACCESS PLATE 9505489 – SIGMA 120 AND SIGMA 75



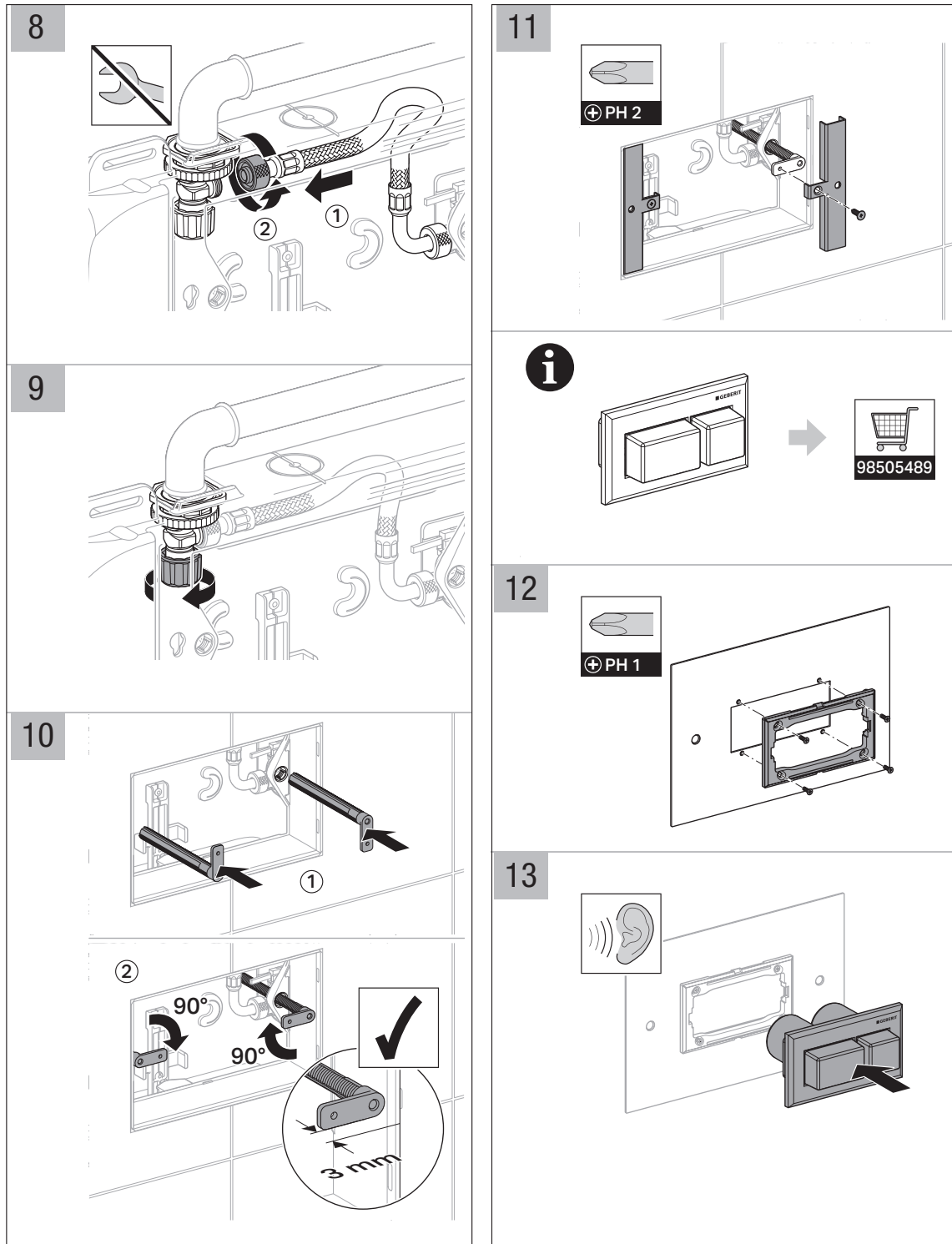
Plumbers, please ensure a copy of the installation instructions is left with the end user for future reference

■ GEBERIT

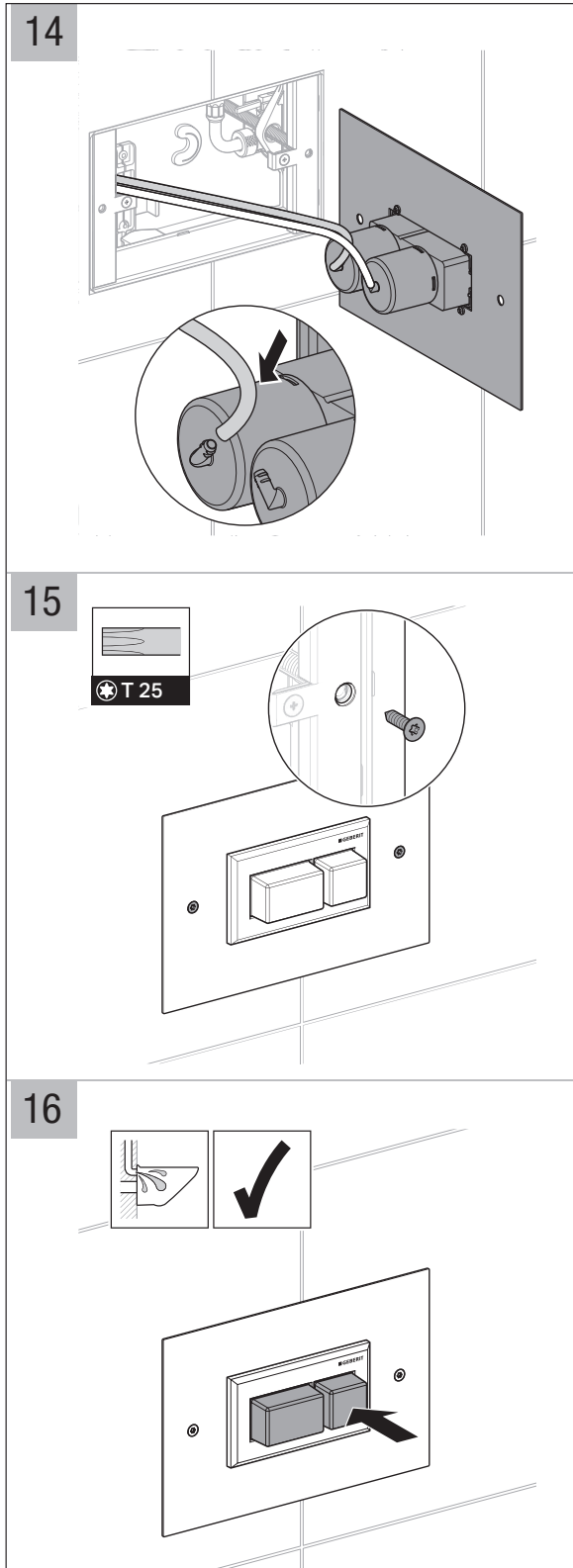
reecer

■ GEBERIT
SIGMA PNEUMATIC CARE BUTTON
& SERVICE ACCESS PANEL (OPTIONAL)

INWALL INSTALLATION WITH ACCESS PLATE 9505489 – SIGMA 120 AND SIGMA 75



Plumbers, please ensure a copy of the installation instructions is left with the end user for future reference

■ GEBERIT**SIGMA PNEUMATIC CARE BUTTON
& SERVICE ACCESS PANEL (OPTIONAL)****INWALL INSTALLATION WITH ACCESS PLATE 9505489 – SIGMA 120 AND SIGMA 75**

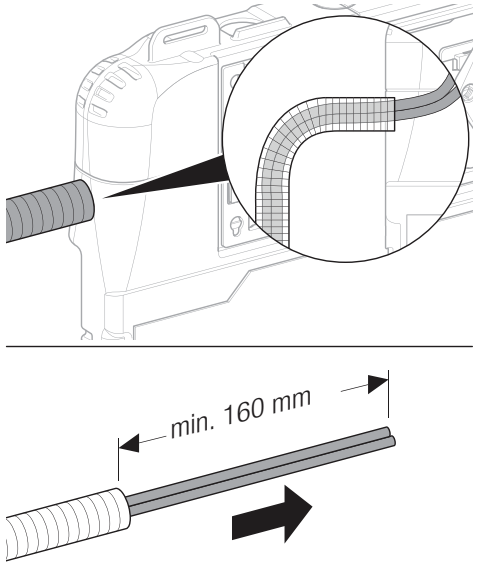
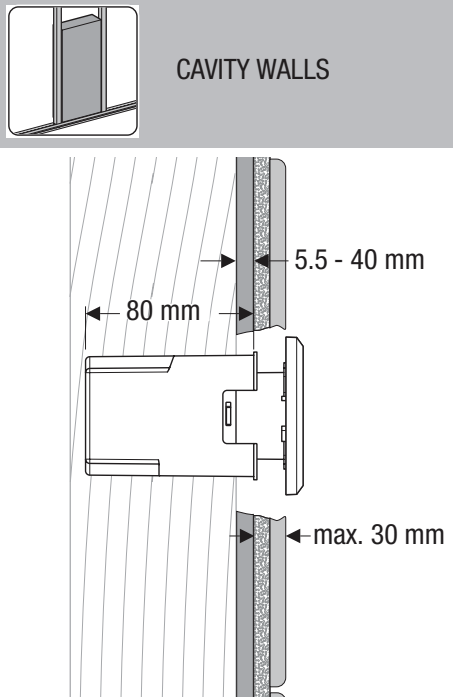
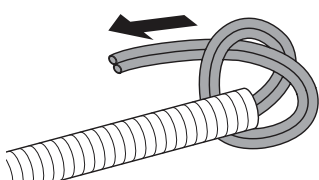
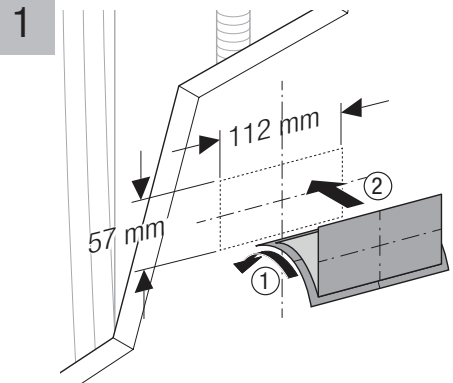
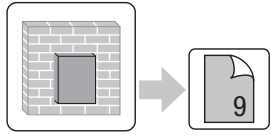
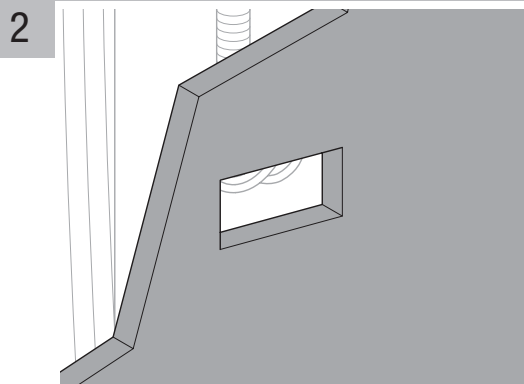
Plumbers, please ensure a copy of the installation instructions is left with the end user for future reference

■ GEBERIT**reece™**

■ GEBERIT

**SIGMA PNEUMATIC CARE BUTTON
& SERVICE ACCESS PANEL (OPTIONAL)**

INSTALLATION INSTRUCTIONS – REMOTE BUTTON

<p>1</p>  <p>min. 160 mm</p>	<p>CAVITY WALLS</p>  <p>80 mm</p> <p>5.5 - 40 mm</p> <p>max. 30 mm</p>
<p>2</p> 	<p>1</p>  <p>112 mm</p> <p>57 mm</p>
<p>3</p> <p>BRICK WALLS</p> 	<p>2</p> 

Plumbers, please ensure a copy of the installation instructions is left with the end user for future reference

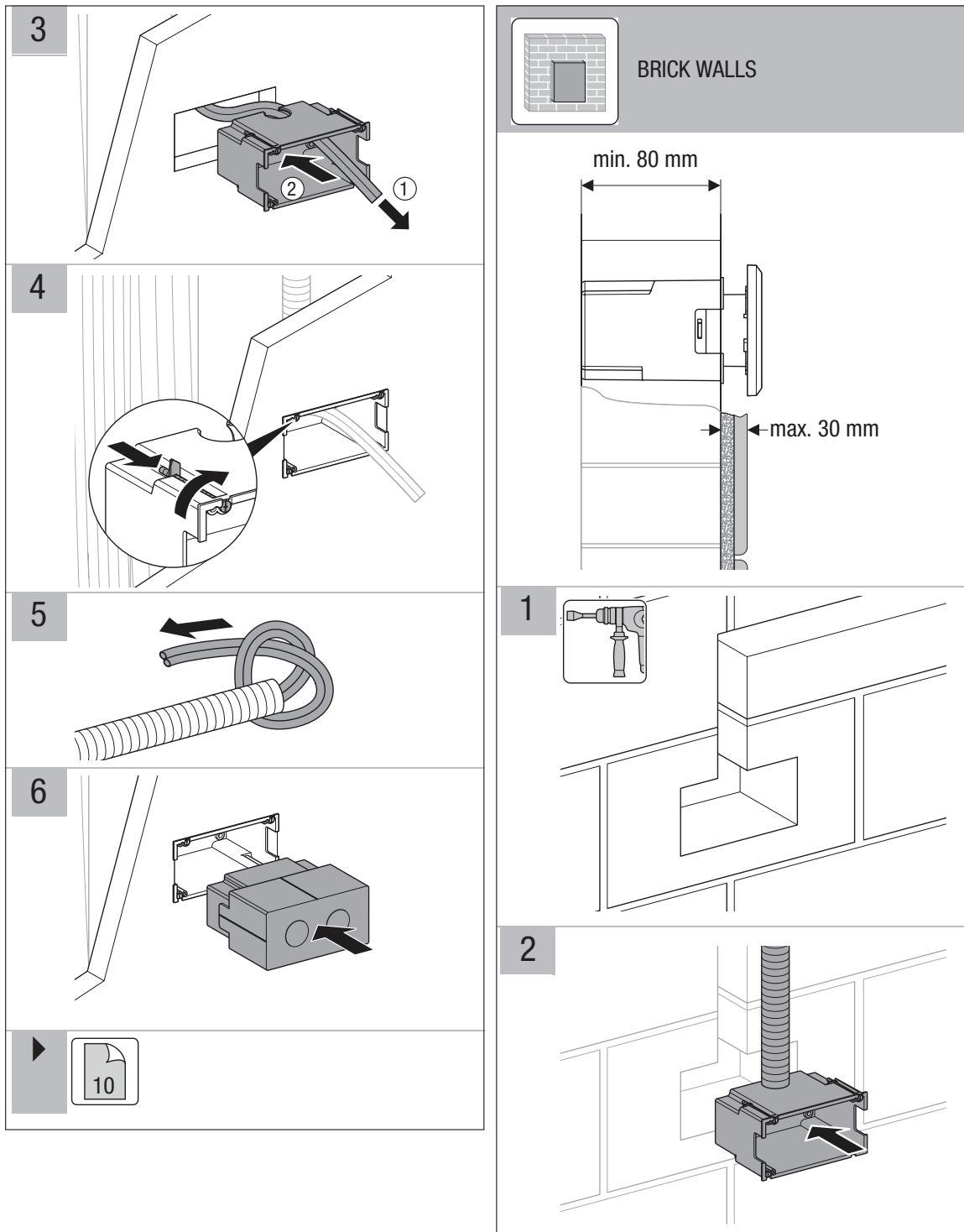
■ GEBERIT

reece™

GEBERIT

SIGMA PNEUMATIC CARE BUTTON & SERVICE ACCESS PANEL (OPTIONAL)

INSTALLATION INSTRUCTIONS – REMOTE BUTTON



Plumbers, please ensure a copy of the installation instructions is left with the end user for future reference

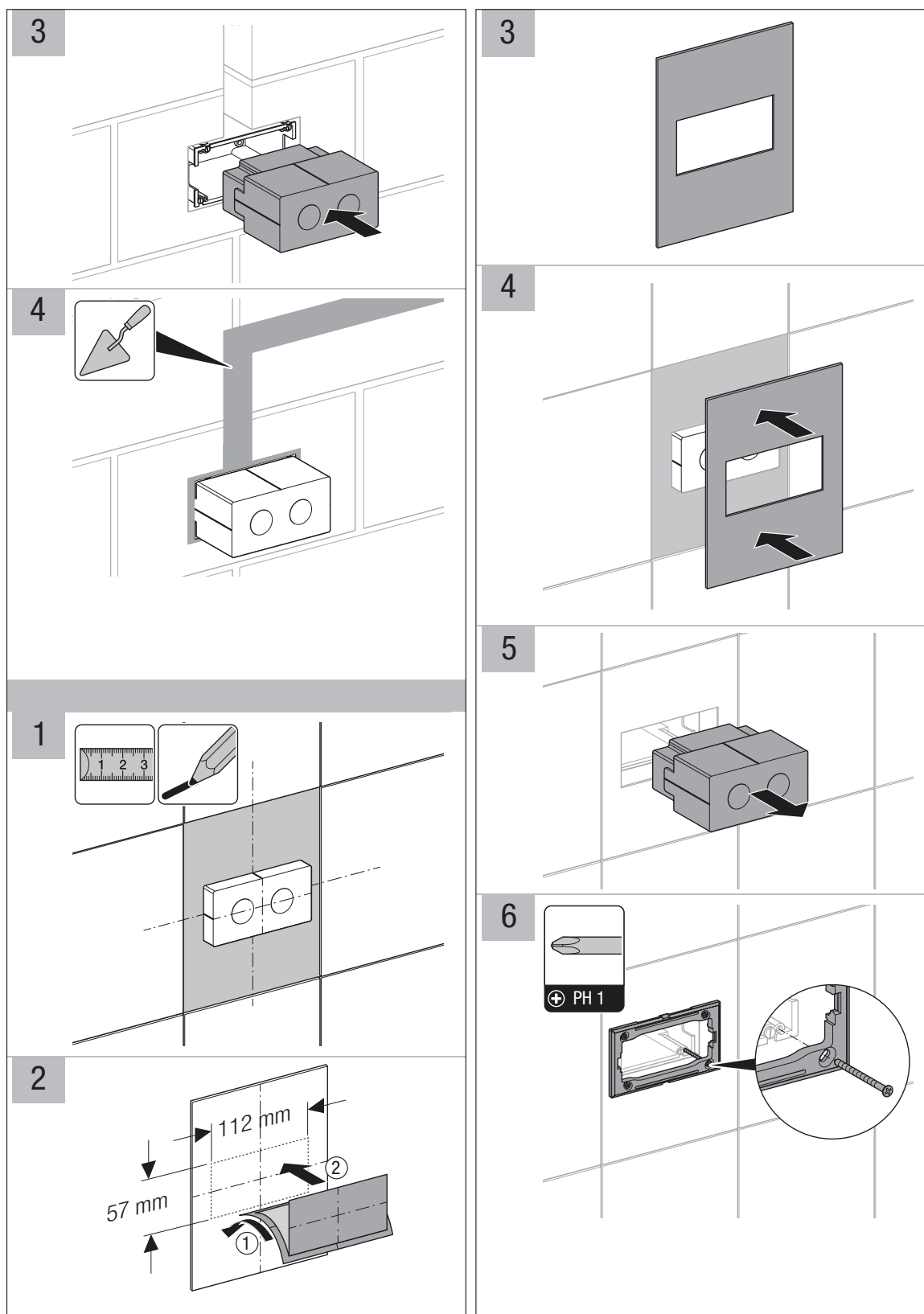
GEBERIT

reecer

■ GEBERIT

SIGMA PNEUMATIC CARE BUTTON & SERVICE ACCESS PANEL (OPTIONAL)

INSTALLATION INSTRUCTIONS – REMOTE BUTTON



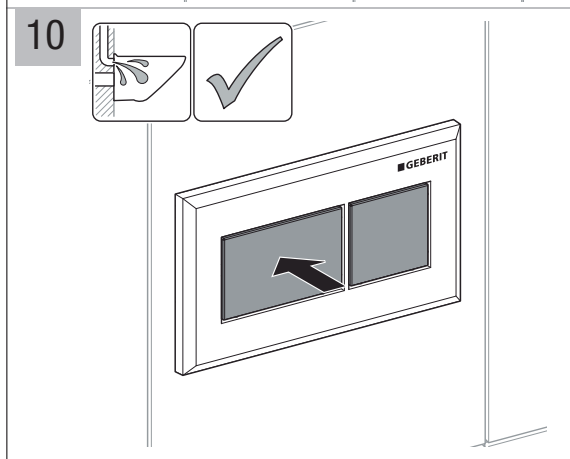
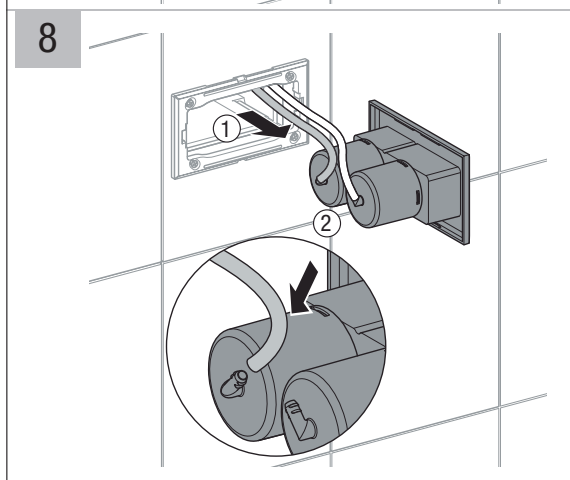
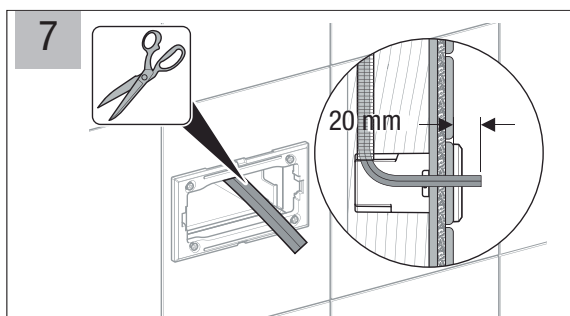
Plumbers, please ensure a copy of the installation instructions is left with the end user for future reference

■ GEBERIT

reecer

**SIGMA PNEUMATIC CARE BUTTON
& SERVICE ACCESS PANEL (OPTIONAL)**

INSTALLATION INSTRUCTIONS – REMOTE BUTTON



Maintenance

i

■ GEBERIT

SIGMA PNEUMATIC CARE BUTTON & SERVICE ACCESS PANEL (OPTIONAL)



REECE PRODUCT QUALITY GUARANTEE

You have purchased a quality product from Reece Pty Ltd ABN 84 004 097 090 ("Reece"). This product is covered by a 15 year replacement product warranty and a 12 month warranty over spare parts and labour.

15 YEAR WARRANTY – DOMESTIC USE

This warranty covers faults in the product construction, material and assembly. Products which are within 15 years from the date of purchase, found upon inspection by an authorised Reece representative, to be defective in construction, material or assembly, will be repaired or exchanged with an equivalent product free of charge. Replaced items become Reece's property.

All replacement products will be available for collection without charge to the customer at the nearest Reece branch to the customer's location, or elsewhere as agreed between the customer and Reece.

Labour and Spare Parts

The labour for the replacement of products and spare parts to which this warranty applies will be supplied by Reece or relevant supplier using licensed plumbers engaged by Reece or relevant supplier within 1 year from the date of purchase.

Spare parts (includes the toilet seat) which are within 1 year from the date of purchase found upon inspection by an authorised Reece representative to be defective in construction, material or assembly, will be replaced free of charge.

Warranty Conditions

This warranty will apply only under all of the following conditions:

- The item has been installed by a licensed plumber
- The item has been installed for and subjected to domestic residential use only
- Failure is due to a fault in the manufacture of the product
- Proof of purchase (including the date of purchase) is provided
- The installation of the product is in accordance with the instructions provided

This warranty does not cover products purchased as an ex-display without being fully checked and tested for sale by the manufacturer.

This warranty does not include faults caused by:

- Unsuitable or improper use
- Incorrect installation or installation not in accordance with the instructions provided
- Installation or part installation by the purchaser or any person other than a LICENSED PLUMBER
- Normal wear and tear
- Inadequate or complete lack of maintenance
- Chemical, electrochemical or electrical influences
- Harsh detergents or abrasive cleaners used on product finishes

1 YEAR WARRANTY – COMMERCIAL USE

'Commercial' use is all use other than for normal domestic residential purposes, including use in non-business places as in public buildings, schools, sports centres and in establishments that contain private bathrooms with high frequency of use by many individuals, such as hotels, motels, retirement villages and hospitals.

The Commercial warranty covers this product against manufacturing faults in the construction, material and assembly of both the finished products and any spare parts for a period of 1 year from the date of purchase. Products and spare parts which are found upon inspection by an authorised Reece representative to be defective in construction, material or assembly will be repaired or exchanged free of charge. Replaced items become Reece's property. The labour for the replacement of products and spare parts to which this warranty applies will be supplied by Reece or relevant supplier using licensed plumbers engaged by Reece or relevant supplier. The Warranty Conditions and exclusions which apply to the domestic use warranty also apply to this commercial warranty.

EXCLUSIONS

To the fullest extent permitted by law, Reece excludes all liability for damage or injury to any person, damage to any property, and any indirect consequential or other loss or damage.

CLAIM PROCEDURE

For all warranty queries customers are to contact the branch where the product was purchased. These details can be found on your purchase invoice.

Our goods come with guarantees that cannot be excluded under the Australian Consumer Law. You are entitled to a replacement or refund for a major failure and for compensation for any other reasonably foreseeable loss or damage. You are also entitled to have the goods repaired or replaced if the goods fail to be of acceptable quality and the failure does not amount to a major failure.