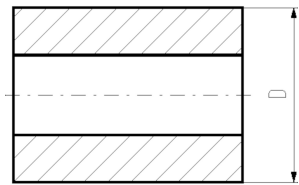
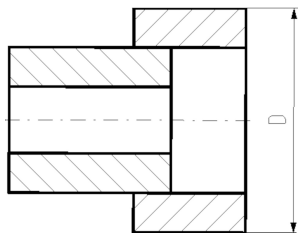
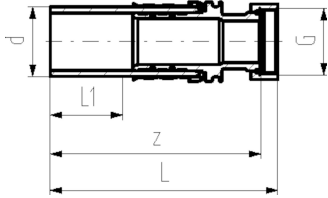




COOL-FIT 2.0 Adaptor fitting PE/Brass with loose union nut G

Model:

- Spigot fitting PE100 SDR11, metric with free end
- Brass CuZn40Pb2 with female thread G
- Including flat seal EPDM
- Including Insulation made from NBR foam



d (mm)	G (inch)	PN	Code	Weight (kg)	D (mm)	L (mm)	L1 (mm)	z (mm)
32	1	16	738 954 328	0.263	70	135	36	127
32	1 ¼	16	738 954 338	0.335	108	137	36	128
40	1 ¼	16	738 954 309	0.569	78	155	40	145
40	1 ½	16	738 954 319	0.650	116	157	40	145
40	2	16	738 954 329	0.864	116	166	40	147
50	1 ½	16	738 954 310	0.801	88	164	44	152
50	1 ¾	16	738 954 320	0.874	88	164	44	152
50	2	16	738 954 330	1.111	126	178	44	159
50	2 ¼	16	738 954 340	0.915	126	148	44	131
63	2	16	738 954 311	1.310	101	186	48	167
63	2 ¾	16	738 954 321	1.422	139	178	48	165
63	2 ¾	16	738 954 331	1.300	139	157	48	138

The technical data are not binding. They neither constitute expressly warranted characteristics nor guaranteed properties nor a guaranteed durability. They are subject to modification. Our General Terms of Sale apply.

Georg Fischer Piping Systems Ltd, Postfach, CH-8201 Schaffhausen/Switzerland

Phone +41 -(0)52-631 1111

e-mail: info.ps@georgfischer.com

Internet: <http://www.gfps.com>