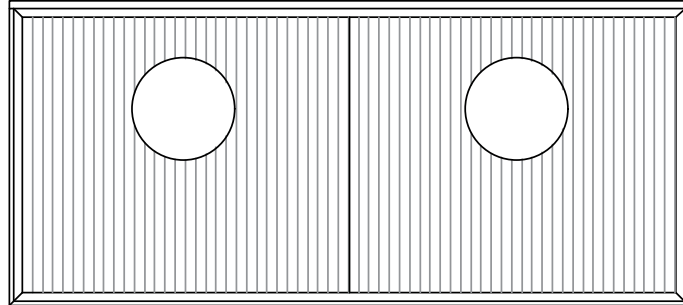


Halo III Vanity Unit

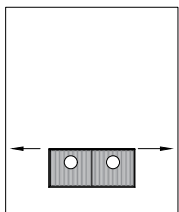


Vanity Fitting Instructions

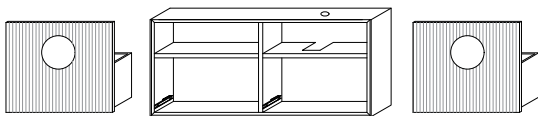
- Prior to installation it is important to inspect the vanity to ensure no damage has occurred in transit. If damage has occurred, or a visible defect exists, do not proceed with the installation and advise supplier immediately. No warranty claim for damage will be accepted if the vanity is installed.
- Prior to installation check wall/tile surface where unit will be fitted is flat and even. Installing on uneven wall will result in the unit twisting – DO NOT PROCEED.
- It is recommended that the Corian top is protected during installation.

PLEASE NOTE: MANUFACTURER WILL NOT BE LIABLE FOR THE COST OF INSTALLATION OR REMOVAL OF THE VANITY & THE WARRANTY WILL BE VOIDED IF DAMAGE OCCURRED DURING INSTALLATION.

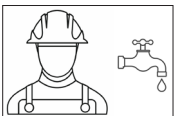
1. Check that the unit will fit into the location. On timber studded walls, mark the positions of the studs, so to be able to fix the unit to these later.



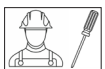
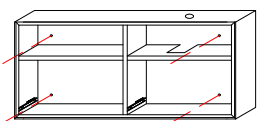
2. To aid Installation; first remove the drawers. Open the drawer fully and release the 2 locking devices under the front of the drawer box. The drawer will then lift out of the runner track. Place the drawers in a secure location in the meantime.



3. Line up the unit so that the units waste chamber aligns with the corresponding plumbing. Holes for waste outlet through the back are not pre-drilled. Cutting the waste outlet is left to the discretion of the plumber. Mark where unit is to be installed.



4. Mount unit by pre-drilling through any part of the back of the unit into the wall. Drill into the timber wall studs and attach using cabinet screws. These will need to be at both the top and bottom of the vanity unit to ensure its secure.

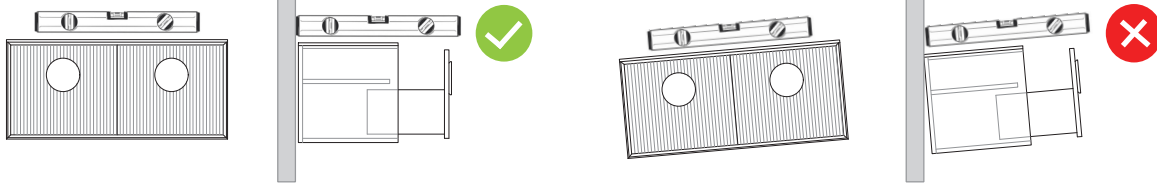


Vanity should be installed by a qualified, licensed trade person.

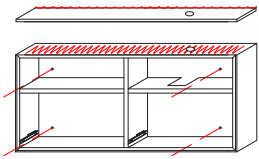
Plumbers, please ensure a copy of the Installation Instructions are left with the end user for future reference

Halo III Vanity Unit

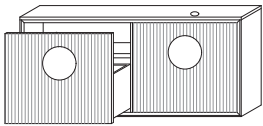
5. Ensure the vanity is installed level; as this will affect the alignment of the drawers.



6. Ensure the corian is right way up to align with the waste cutout, as well as edge detail. Silicone needs to be applied to secure and mount onto the vanity permanently. Silicone all the way around the top edge of the cabinet where the unit meets any wall surface to ensure a proper protective seal.



7. Install drawers and adjust as required using the drawer adjustment dials on the underside locking device.



**Recommendation for Plumbing

Waste should not be over tightened to avoid stress on basin and top.

TO MAKE ADJUSTMENT



Start by opening the drawer to find the adjustment located in the front underneath side of either drawer runner.

SIDE TO SIDE ADJUSTMENT



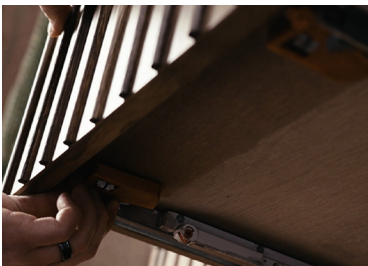
Rolls the wheels left or right.

DEPTH ADJUSTMENT



Roll the wheels forwards or backwards. (Touch latch units ONLY)

HEIGHT ADJUSTMENT



To move the drawer up, push the clip away from you. To move the drawer down, pull the clip towards you.

SCAN ME FOR A DETAILED ADJUSTMENT VIDEO:



Plumbers, please ensure a copy of the Installation Instructions are left with the end user for future reference