



Colorbond™ Steel Rivets



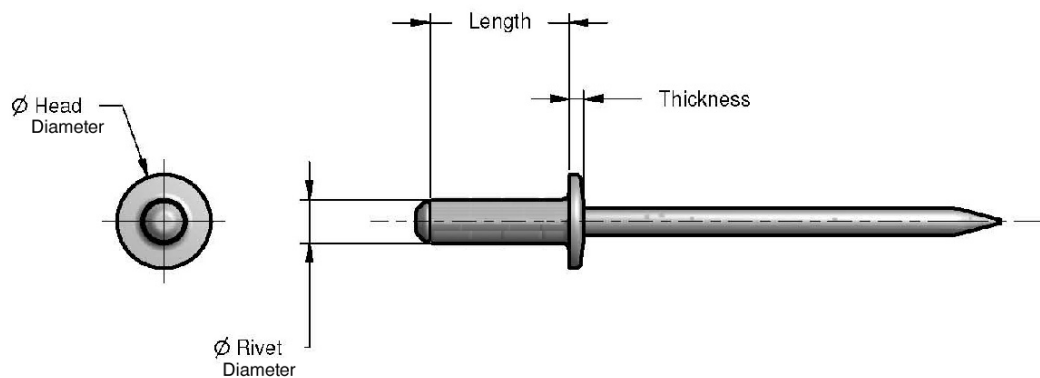
4-3 Aluminium/Steel Rivet Ironstone pictured

SPECIFICATIONS

Material	Carbon Steel
Head Material	Aluminium
Head Diameter	6.4mm
Rivet Diameter	3.2mm
Length	8 mm
Thickness	1.2mm max
Hole Diameter	3.3mm
Allowable Tensile Load	.45 KN
Sheer Strength	360 N
Quantity	100

WARRANTY

Refer to Warranty document



Disclaimer: Products in this specification manual must by regulation be installed by licensed and registered trade people. The manufacturer/distributor reserves the right to vary specifications or delete models from their range without prior notification. Dimensions are nominal measurements only. Dimensions and set-outs listed are correct at time of publication however the manufacturer/distributor takes no responsibility for printing errors.

Tech Page Version 1

Don't risk it, use a licensed plumber.™



Colorbond™ Steel Rivets

Colorbond™ Colours*

<p>Headland™</p> <p>Reece code: 4913170</p>	<p>Paperbark</p> <p>Reece code: 4913182</p>	<p>Cottage Green™</p> <p>Reece code: 4913198</p>	<p>Basalt™</p> <p>Reece code: 4913267</p>
<p>Manor Red™</p> <p>Reece code: 4913172</p>	<p>Dune™</p> <p>Reece code: 4913184</p>	<p>Deep Ocean™</p> <p>Reece code: 4913204</p>	<p>Cove™</p> <p>Reece code: 4913268</p>
<p>Jasper™</p> <p>Reece code: 4913174</p>	<p>Shale Grey™</p> <p>Reece code: 4913186</p>	<p>Ironstone™</p> <p>Reece code: 4913206</p>	<p>Gully™</p> <p>Reece code: 4913269</p>
<p>Sandbank™</p> <p>Reece code: 4913176</p>	<p>Windspray™</p> <p>Reece code: 4913188</p>	<p>Night Sky™</p> <p>Reece code: 4913208</p>	<p>Mangrove™</p> <p>Reece code: 4913270</p>
<p>Classic Cream</p> <p>Reece code: 4913178</p>	<p>Woodland Grey™</p> <p>Reece code: 4913190</p>	<p>Evening Haze™</p> <p>Reece code: 4913211</p>	<p>Terrain™</p> <p>Reece code: 4913271</p>
<p>Surfmist™</p> <p>Reece code: 4913180</p>	<p>Pale Eucalypt™</p> <p>Reece code: 4913194</p>	<p>Monument™</p> <p>Reece code: 4913212</p>	<p>Wallaby™</p> <p>Reece code: 4913272</p>

*The Colorbond™ prepainted steel colours shown have been reproduced to represent actual product colours as accurately as possible. However we recommend checking your chosen colour against an actual sample of the product as colour tones may vary.

Don't risk it, use a licensed plumber.™



Colorbond™ Steel Rivets

INSTALLATION INSTRUCTIONS

1. Drill a hole to the required size to suit the rivet.
2. Insert the rivet mandrel into the rivet tool making sure the correct nose is in the rivet tool.
3. Place the rivet into the drilled hole and squeeze the plier once or twice till the mandrel breaks.
4. Open the plier and turn the rivet tool upside down until the mandrel falls out.

Disclaimer: Products in this specification manual must by regulation be installed by licensed and registered trade people. The manufacturer/distributor reserves the right to vary specifications or delete models from their range without prior notification. Dimensions are nominal measurements only. Dimensions and set-outs listed are correct at time of publication however the manufacturer/distributor takes no responsibility for printing errors.

Tech Page Version 1

Don't risk it, use a licensed plumber.™

