

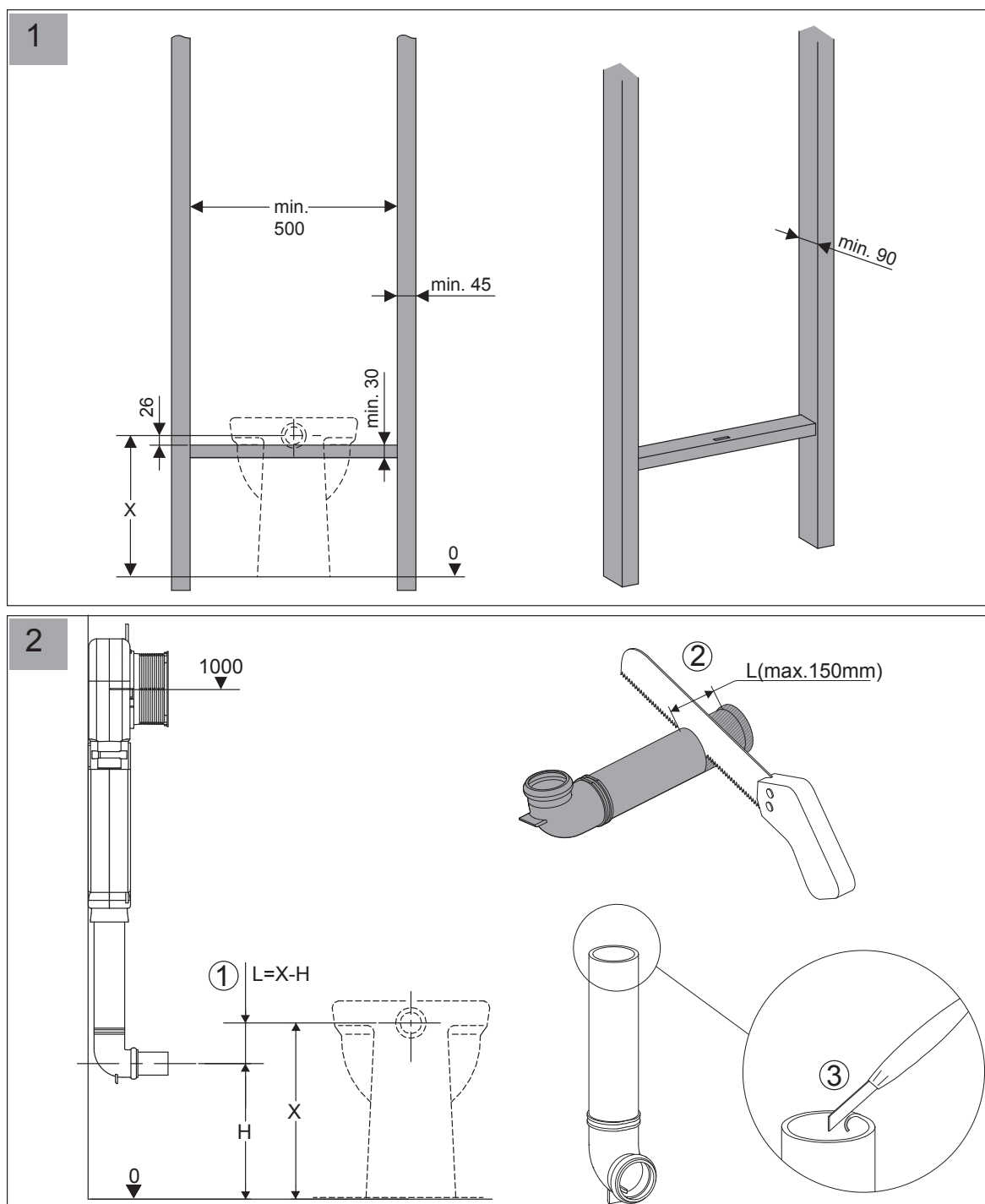
# HIDEAWAY PLUS

## IN-WALL CISTERN (BACK TO WALL PAN)

### Installation Instructions

### INSTALLATION

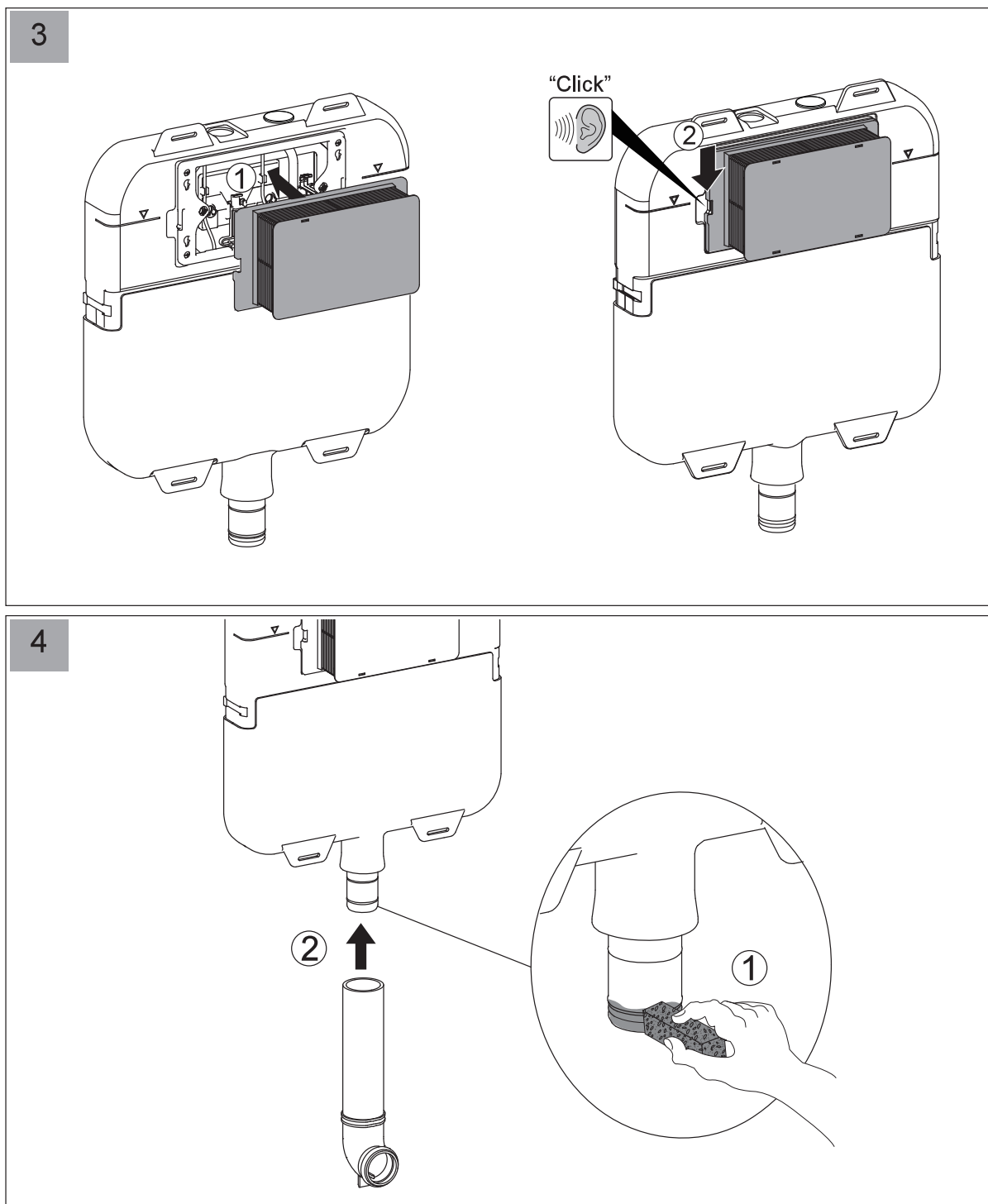
Please note: For dimensions from finished floor level to pan inlet and outlet, refer to your pan specifications.



# HIDEAWAY PLUS

## IN-WALL CISTERN (BACK TO WALL PAN)

### Installation Instructions

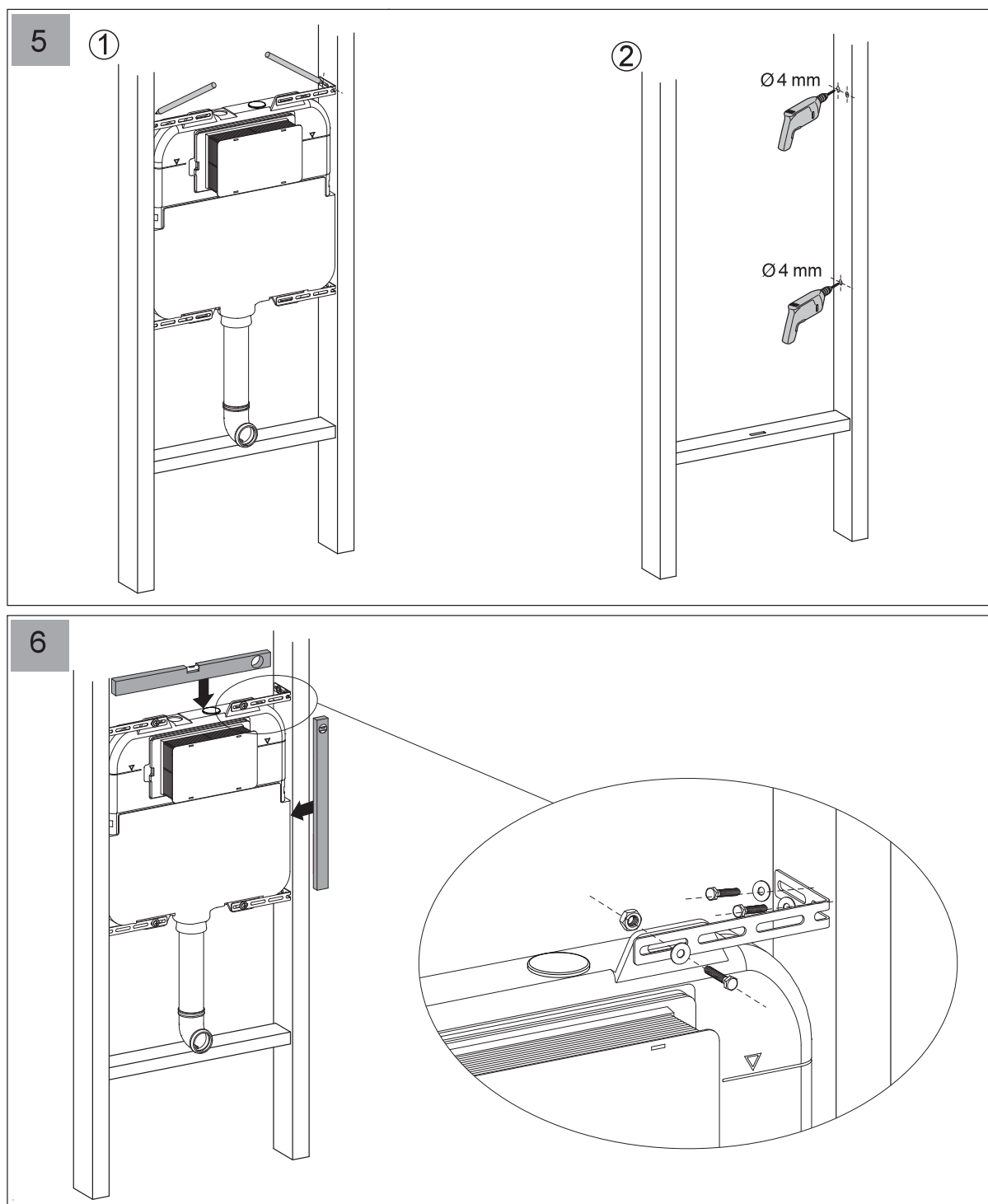


# HIDEAWAY PLUS

## IN-WALL CISTERN (BACK TO WALL PAN)

### Installation Instructions

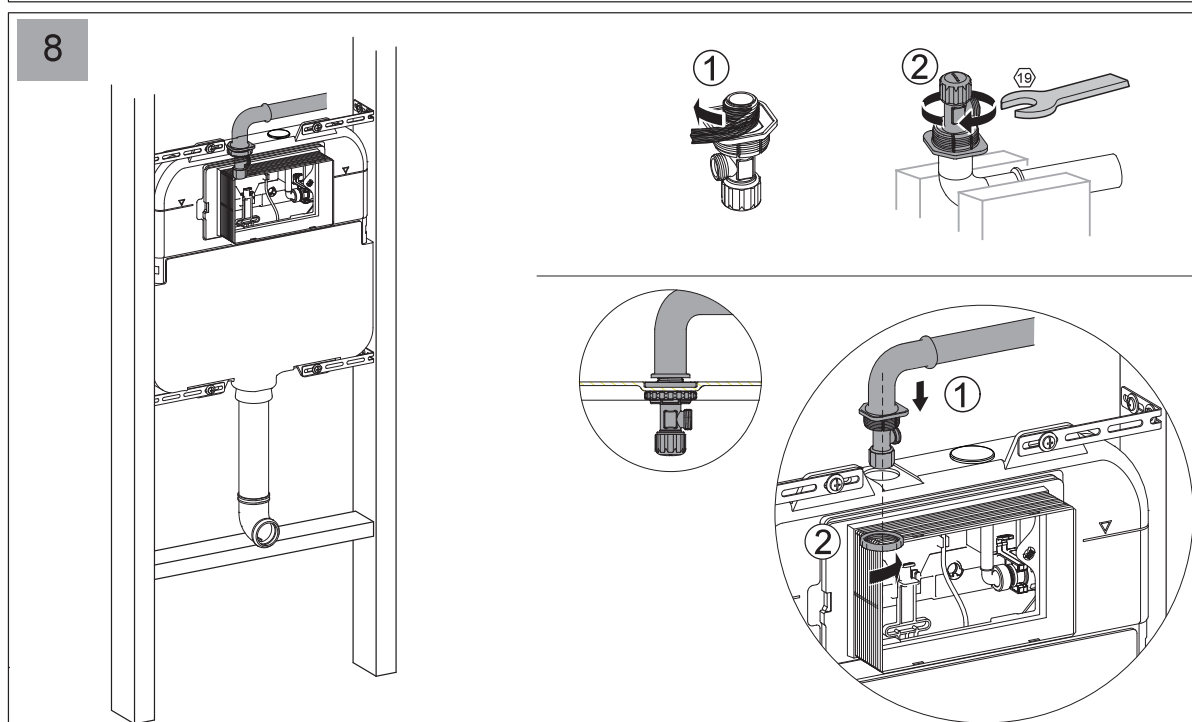
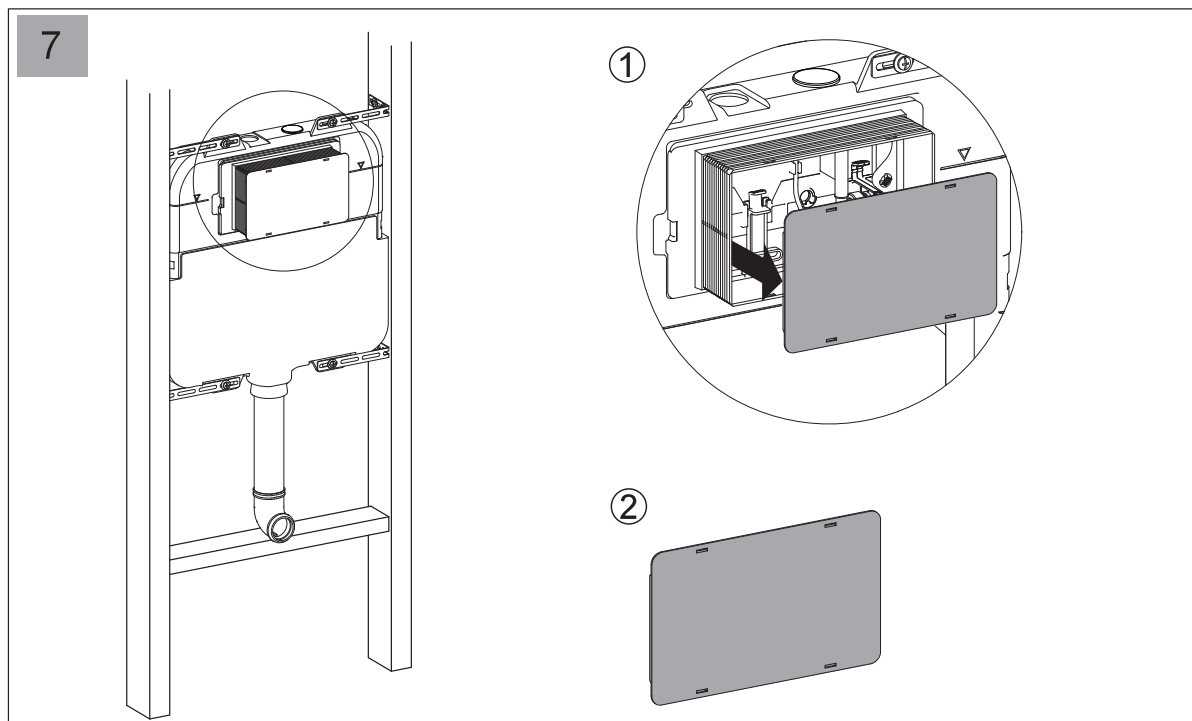
Please note: Flush pipe must be fixed securely to a cross beam inside the wall to avoid dislodging from the cistern when pan is fitted.



# HIDEAWAY PLUS

## IN-WALL CISTERN (BACK TO WALL PAN)

### Installation Instructions

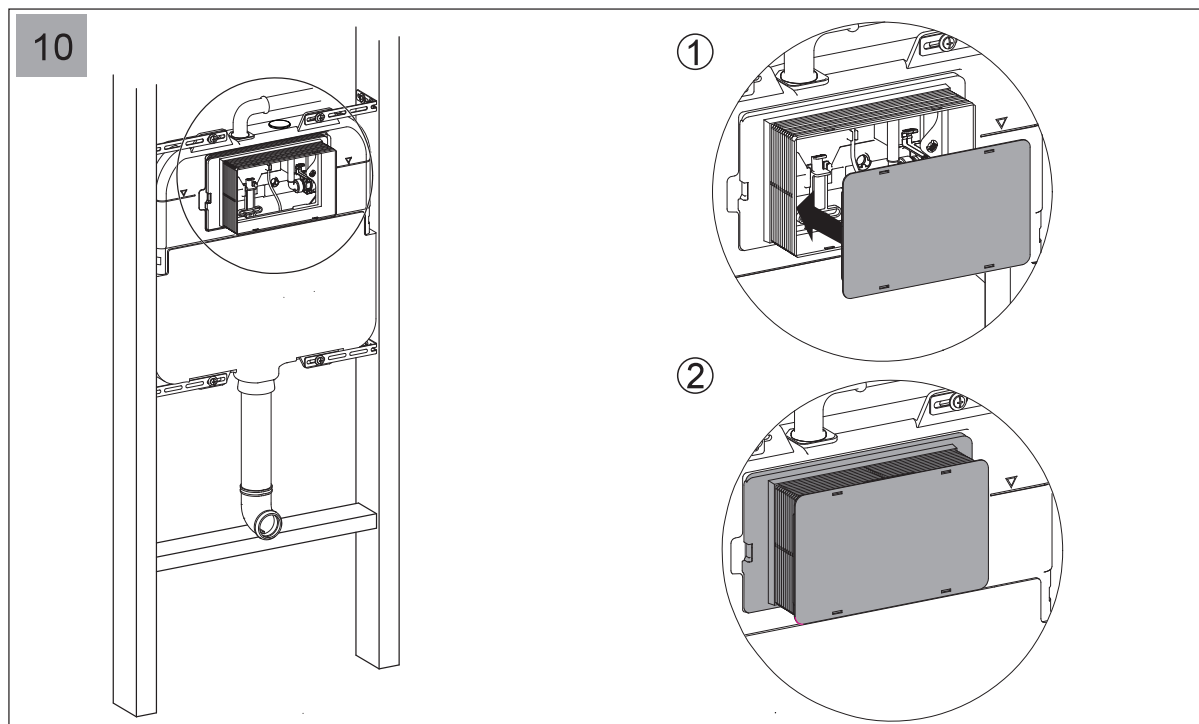
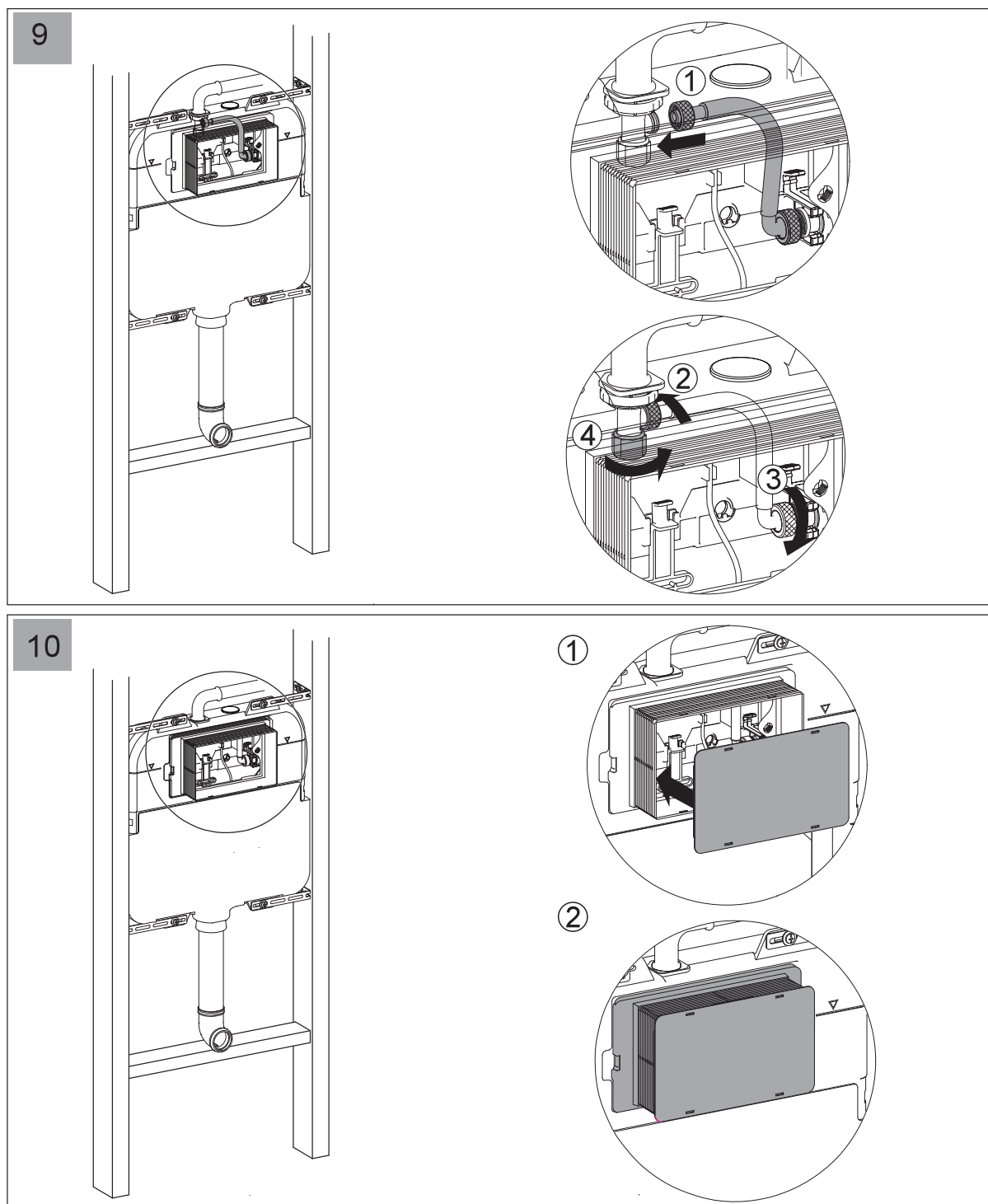


Plumbers, please ensure a copy of the installation instructions is left with the end user for future reference

# HIDEAWAY PLUS

## IN-WALL CISTERN (BACK TO WALL PAN)

### Installation Instructions

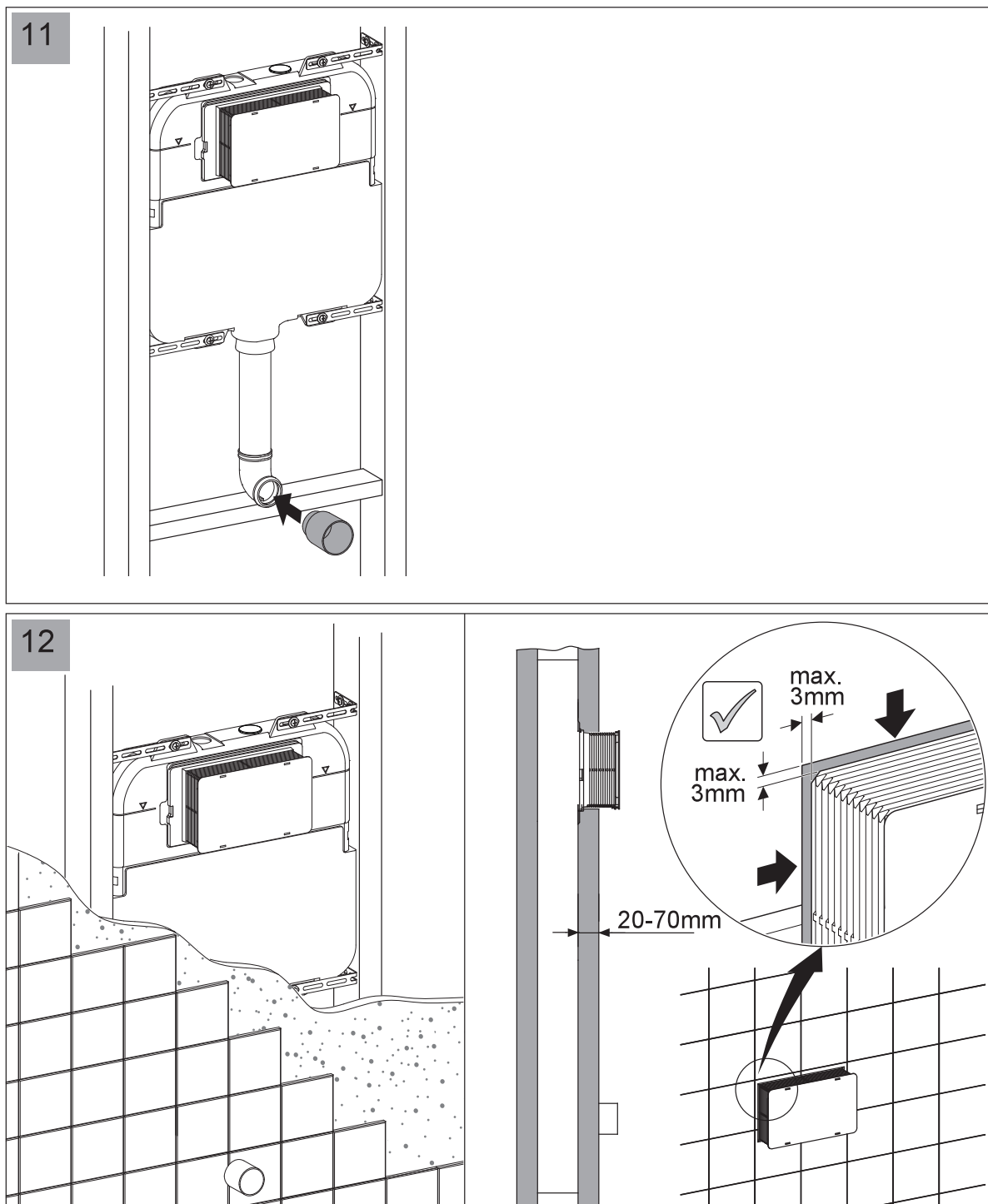


Please note: Illustrations shown for front access installation. If using remote access buttons, refer to selected button instructions.

# HIDEAWAY PLUS

## IN-WALL CISTERN (BACK TO WALL PAN)

### Installation Instructions



For button installation, refer to individual button instructions

# HIDEAWAY PLUS IN-WALL CISTERN (BACK TO WALL PAN)

## Installation Instructions

Note: Refer to installation instructions for your selected pan

