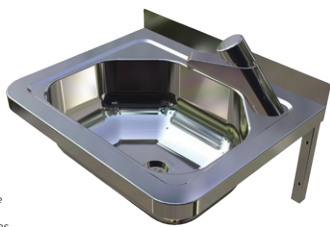


Compact Hand Basin



HBMB

Scan QR code
to view our
installation notes



Product Info:

- Compact, convenient size
- Highly polished stainless finish
- Can be supplied with 1 or 2 tap holes
- 30mm blade upstand to rear
- Wall brackets & 40mm waste supplied
- Optional tapware (see Tapware: Section 11)

To order this item please advise:

- Tapware and tap hole details (if required)

Suggested Tapware:

(see Tapware Section: 11 for complete range of options)



TW-9201
Deluxe Timed Flow
Pillar Tap



TW-9101
Eco Timed Flow
Pillar Tap



TW-9110
Euro Basin Mounted
Sensor Tap



TW-MIX-01
Basin Mounted
Flick Mixer - Fixed

INSTALLATION NOTES

1) Fixture strength is ultimately determined by the load capacity of the supporting structure (noggins recommended for stud walls) and use of appropriate fixings. 2) Basin is secured to wall with L-shaped stainless wall brackets (supplied) that fit into side fascias of basin and incorporate two fixing points (8mm dia.). 3) Trap and fixings (other than wall brackets) not supplied.

