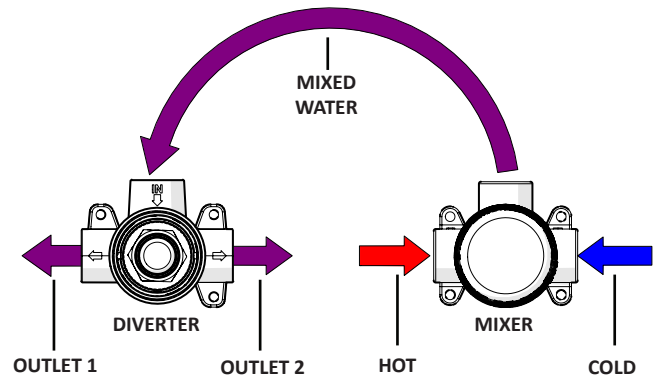
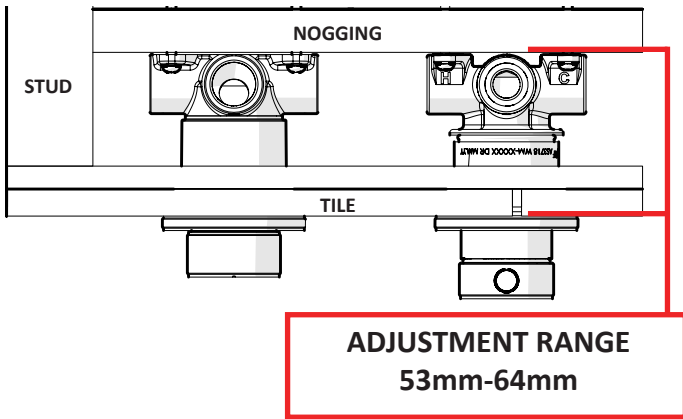
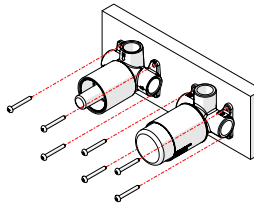


Milli Etch Shower Mixer Tap with Diverter

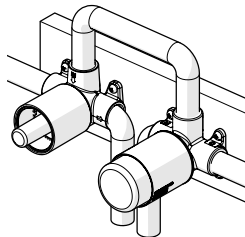


- 1 Screw the Mixer Breach and Diverter onto Nogging to dimensions shown in adjustment range.

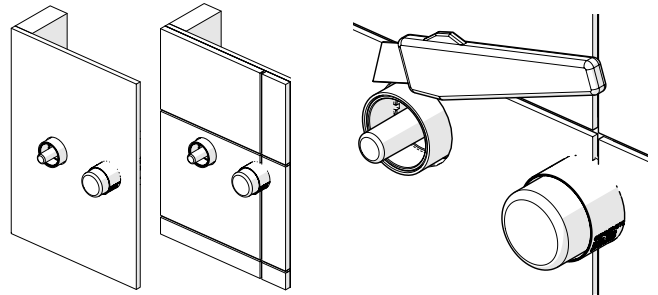
Ensure that the mixer body and diverter is level.



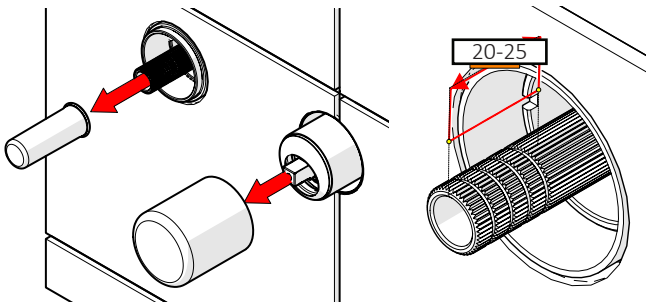
Ensure wall outlet fitting is capped. Perform **PRESSURE TEST** and check for leaks.



- 2 Drill a 45mm Hole for the diverter and a 50mm hole for the mixer in the cement sheet. Waterproof and Tile as shown. Trim Waterproofing sleeve to tile face.

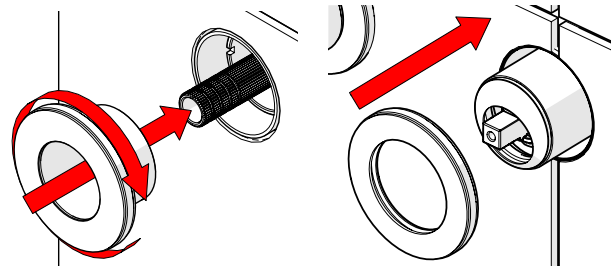


- 3 Remove Protective Covers and check if Diverter Spline is between 18mm-25mm from tile face. If larger trim to size.



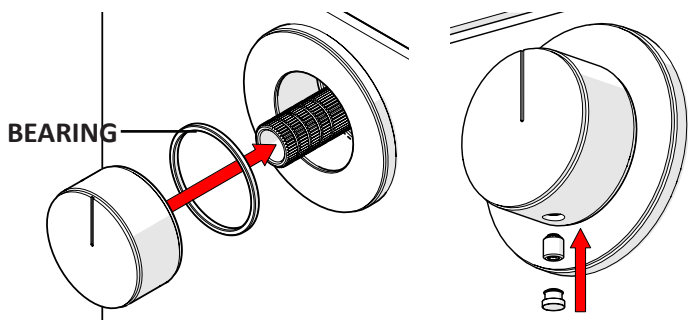
- 4 Screw **Diverter** Dress Plate into body until flush with Tile Face.

Push **Mixer** Dress Plate onto sleeve until flush with Tile face.

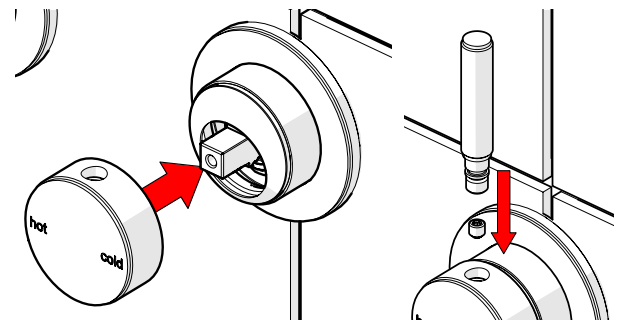


- 5 Push on Diverter Handle ensuring supplied bearing is in position.

Secure with supplied Grub Screw. Push on Rubber cap to finish.



- 6 Push Mixer Handle onto Cartridge Stem as shown. Secure with Grub Screw and install handle Pin.



Care Details

We recommend the use of soapy water or approved cleaners. This product should not be cleaned with abrasive materials. Damage caused by any improper treatment is not covered by the product warranty. Refer to Warranty Conditions

Installation should comply with Australian standard AS3500.1 or relevant local authority requirements. Showers may not be suitable for use within:

- Gravity-fed water systems
- Some instantaneous hot water systems

Any flow controller incorporated in the outlet to be tightened to prevent removal by hand. As Per AS3718

Plumbers, please ensure a copy of the installation instruction is left with the end user for future reference.

