

Ona

5 Star



A5B849E..A

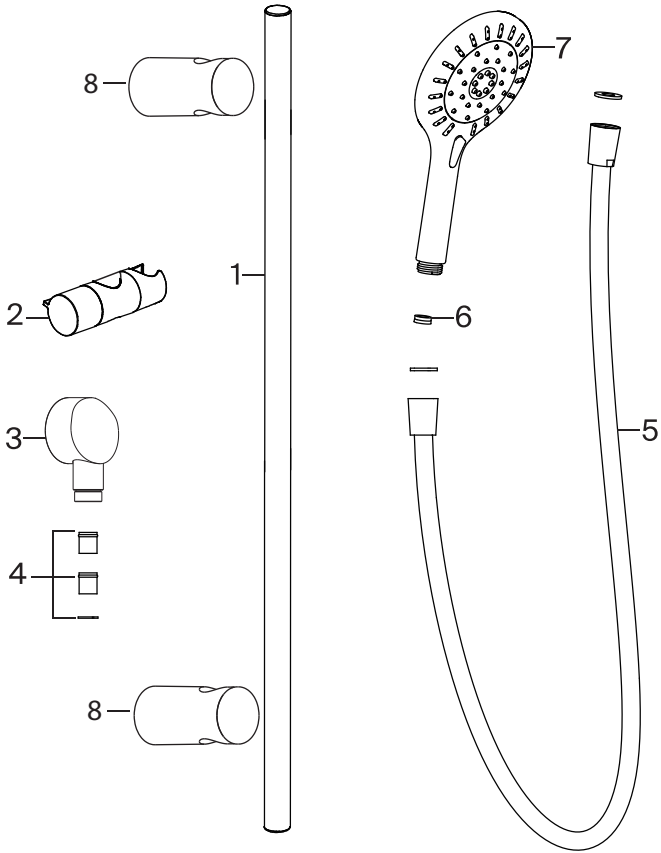


- ⚠ Must be installed to the requirements of AS/NZS 3500 by suitably qualified personnel.
- ⚠ This product is suitable for use with high pressure water supplies.
- ⚠ This product is not suitable for gravity fed supplies.
- ⚠ Care must be taken to ensure that male connecting threads do not damage the flow controllers and check valves included with this product.
- ⚠ Ensure the water supply line is flushed free of debris prior to installation.

Roca



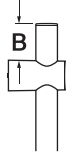
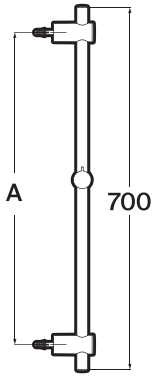
(mm)



1 - SLIDING BAR	3 - INLET BRACKET	5 - SHOWER HOSE	7 - HAND SHOWER 120
2 - HOLDER	4 - CHECK VALVE KIT	6 - RESTRICTOR 7L	8 - MOUNTING BRACKET KIT



(mm)



A	B
600	32
640 max	12

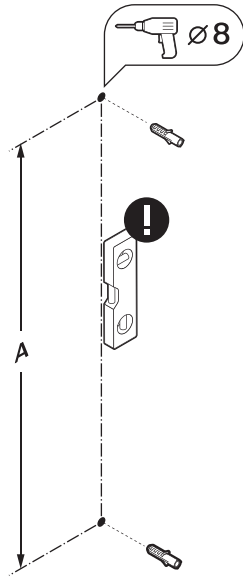


x2

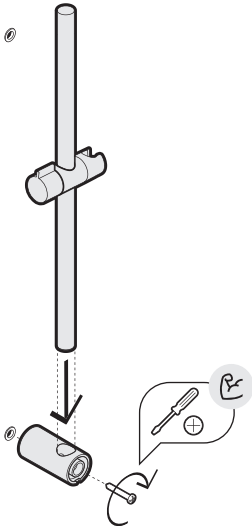


x2

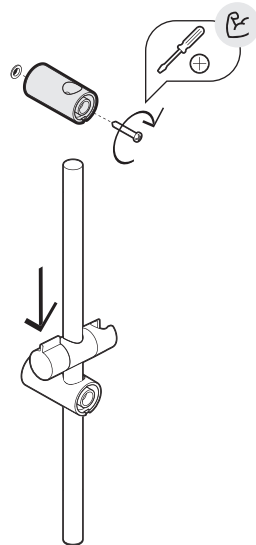
1



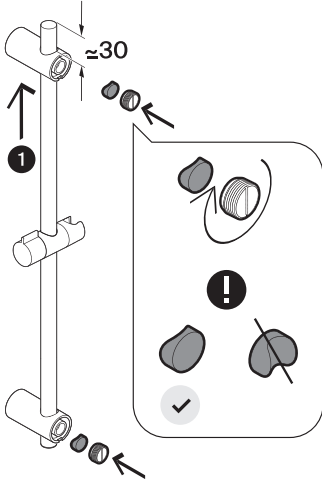
2



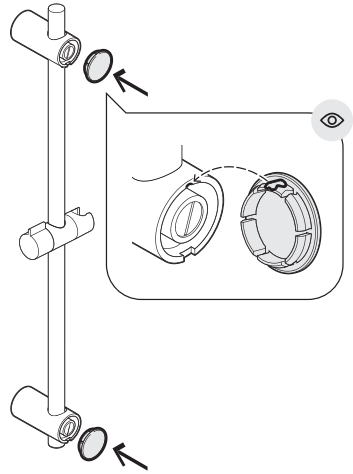
3



4

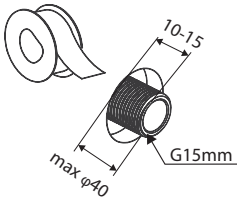


5

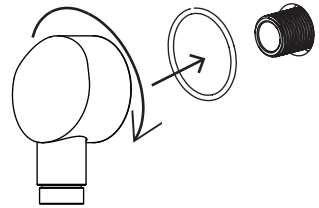


6

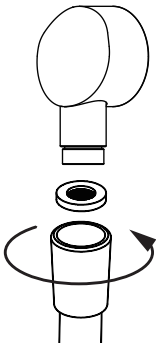
⚠ Only use teflon tape



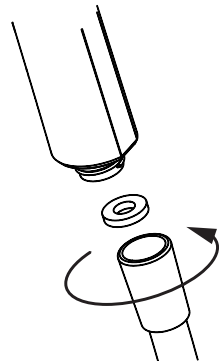
7



8

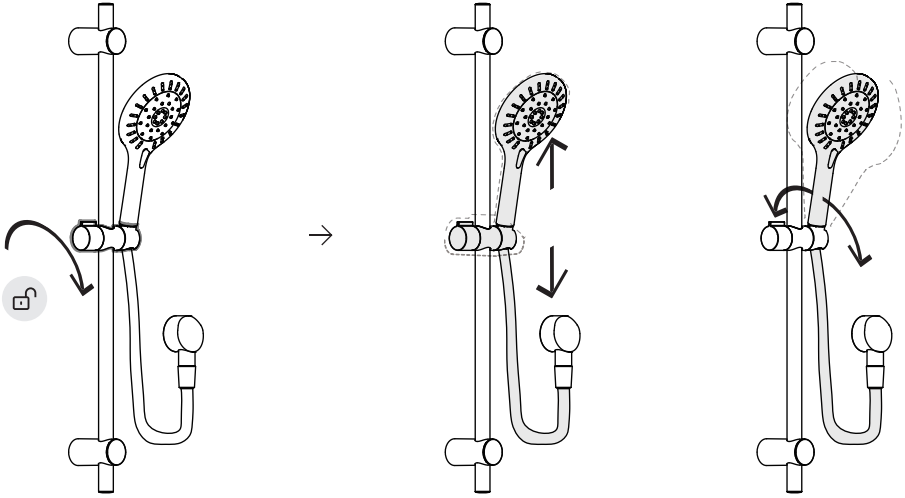











9





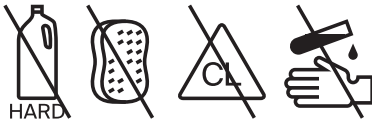
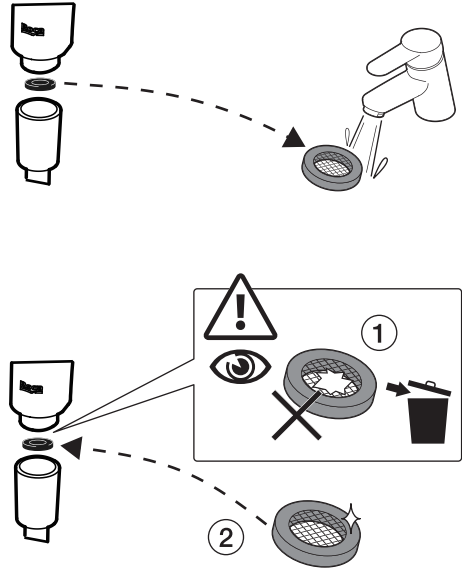
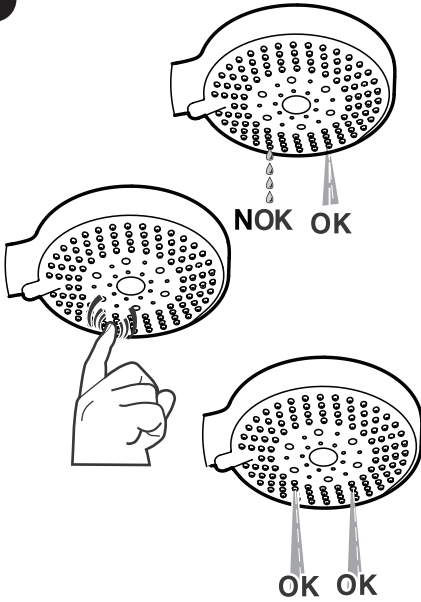
(mm)



 P	kPa	 50	MAX. 500	 100	
  T	°C	 80	MAX.	 65	



(mm)



Roca Sanitario, S.A.U.
Avda Diagonal, 513
08029 Barcelona - España
roca.es

Care details are outlined in this document.
Damage caused by any improper treatment is
not covered by the product warranty - refer to
warranty conditions at reece.com.au.

Roca

OP23930028007-aa