



KWIK REPAIR CLAMPS

DN 15 - DN 50

QUICK INSTALLATION REPAIR CLAMPS FOR PERMANENT REPAIRS ON GALVANISED STEEL, PVC AND COPPER PIPE



FEATURES

Full circle repair clamps for galvanised steel, PVC and copper pipelines

Full circle gasket seal provides complete damage containment

Available in 75mm (1 bolt) or 150mm (2 bolts) lengths

316 stainless steel skin

Available with galvanised steel or 316 stainless steel fasteners

Manufacturing facility certified to the ISO 9001 quality assured standard

DESCRIPTION

A stainless steel skin and cartridge gasket design provides a quick wrap around repair solution for small diameter pipe

Use of quality materials and robust design provide a permanent pipe repair in a variety of applications

APPLICATION

KWIK Clamps are ideal for the repair of galvanised steel, PVC and copper pipes with pinholes, punctures or splits

TECHNICAL DATA

Size Range: DN 15 – DN 50

Maximum Operating Pressure: 1600 kPa

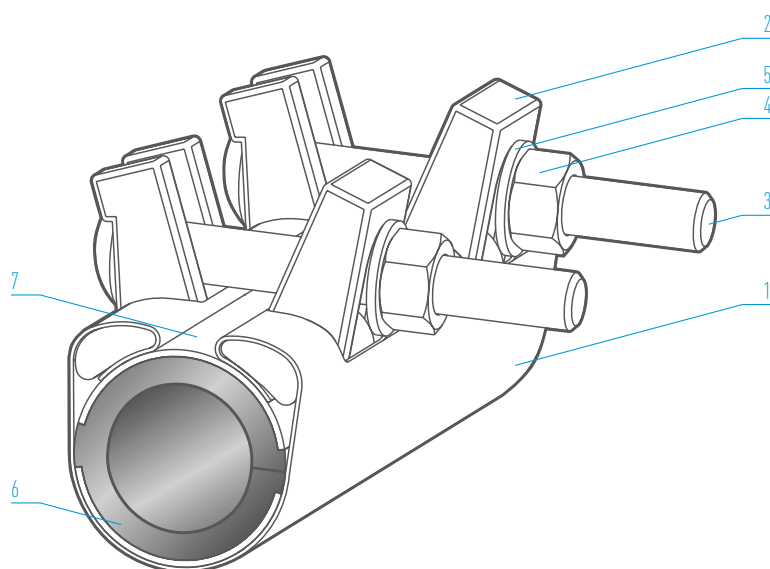
Temperature Range: -10° to 60°C

Note: WANG KWIK clamps do not provide axial pipe restraint.

WANG KWIK REPAIR CLAMPS

DN 15 - DN 50

QUICK INSTALLATION REPAIR CLAMPS FOR PERMANENT REPAIRS ON GALVANISED STEEL, PVC AND COPPER PIPE



PARTS LIST

| No. | Description / Material / Standard |
|-----|--|
| 1 | Skin 316 Stainless Steel / ASTM A240M |
| 2 | Lugs Ductile Iron (Epoxy enamel paint) / AS 1831 |
| 3 | Bolts Galvanised Mild Steel or 316 Stainless Steel / DIN 603 |
| 4 | Nuts Galvanised Mild Steel or 316 Stainless Steel ISO 4032/AS 1112.1 |
| 5 | Washers Galvanised Mild Steel or 316 Stainless Steel / ISO 887 |
| 6 | Gasket Cartridge Nitrile (NBR) Compound / AS 1646 and AS/NZS 4020 |
| 7 | Gasket Armour 316 Stainless Steel bonded to gasket / ASTM A240M |

PIPE SUITABILITY - PIPE OD

| Nominal Size DN | 15 | 20 | 25 | 32 | 40 | 50 |
|------------------|----|----|----|----|----|----|
| Copper | 15 | 20 | 25 | 32 | 40 | 50 |
| Galvanised Steel | 21 | 27 | 33 | 42 | 48 | 60 |
| PVC | 21 | 27 | 33 | 42 | 48 | 60 |

FULL CIRCLE KWIK CLAMP CONFIGURATION

| Pipe | Nominal Size | Length | Number of Bolts | Bolt Size |
|----------------|--------------|--------|-----------------|-----------|
| Copper | 15-50 | 75 | 1 | M10 |
| Copper | 15-50 | 150 | 2 | M10 |
| Galv Steel/PVC | 15-50 | 75 | 1 | M10 |
| Galv Steel/PVC | 15-50 | 150 | 2 | M10 |

TYPICAL SPECIFYING SEQUENCE

| KK | F | COP | 2 | - | 015 | G |
|----------------------|------------------------|--|---|------|---|--|
| KK = Kwik Clamp Code | F = Full Circle Gasket | Pipe Suitability COP = Copper Pipe GAL = Galvanised Steel Pipe | Clamp Length 1 = 1 Bolt, 75mm Wide 2 = 2 Bolt, 150mm Wide | Dash | Nominal Pipe Size DN 15 = 015 DN 20 = 020 DN 25 = 025 DN 32 = 032 DN 40 = 040 DN 50 = 050 | Fastener Material G = Galvanised Steel (Standard) S = Stainless Steel (Optional) |

WANG CLAMPS & COUPLINGS

WANG is one of the leading manufacturers and suppliers of Grade 316 Stainless Steel Repair and Tapped Clamps as well as Couplings for reticulated water, sewerage and gas mains including industrial piping systems.

WANG products have become synonymous with quality and reliability. Our product range is widely utilised and relied upon by Water Authorities and Councils throughout Australia in the installation and maintenance of their supply mains and reticulation network.

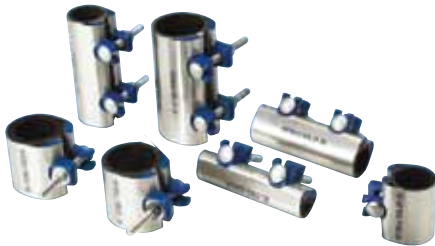


WANG products can be sourced through the Viadux national sales and service network of customer centres.

Viadux is a specialist in integrated solutions for all your water and wastewater pipeline system requirements.

KWIK CLAMPS

A full circle repair clamp for small bore galvanised steel, copper and PVC pipe. DN 15 - DN 50



REPAIR CLAMPS

A fast, permanent and economical repair solution for most pipe types and sizes. DN 50 - DN 1200



TAPPED CLAMPS

A reliable means of tapping into old, unstable or damaged pipe. DN 50 - DN 1200



TAPPING SADDLES

Permanent tapping solution for both rigid and flexible pipe. DN 40 - DN 450



FLANGED OFFTAKE CLAMPS

A cost effective means of achieving a "T" connection or under pressure tapping. DN 100 - DN 900



SEWER OB JUNCTION CLAMPS

A quick method of installing a new property service connection on a sewer main. DN 100 - DN 450



VARI-FLANGED COUPLINGS

Enable connection between a stub ended pipe and a mating flanged face. DN 80 - DN 600



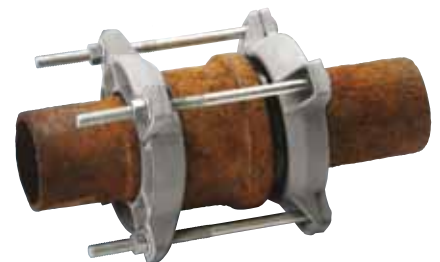
HIGH PRESSURE COUPLINGS

Provides a mechanical joint between similar or dissimilar pipes in high pressure environments. DN 150 - DN 2000



SOCKET JOINT LEAK CLAMPS

Provide a permanent and economical seal over a leaking socket-spigot joint. DN 80 - DN 1200



DISTRIBUTED BY VIADUX

ADELAIDE
P: 08 8340 3411
F: 08 8340 3422
E: ccasales@viadux.com.au

MELBOURNE
P: 03 9309 9133
F: 03 9309 6237
E: ccmsales@viadux.com.au

BRISBANE
P: 07 5589 4400
F: 07 5534 7079
E: ccbsales@viadux.com.au

PERTH
P: 08 9346 8500
F: 08 9346 8501
E: ccpsales@viadux.com.au

DARWIN
P: 08 8935 3300
F: 08 8947 3981
E: ccdsales@viadux.com.au

SYDNEY
P: 02 9794 3440
F: 02 9794 3499
E: ccssales@viadux.com.au

GOLD COAST
P: 07 5589 4400
F: 07 5534 7079
E: ccgsales@viadux.com.au

TOWNSVILLE
P: 07 4725 5940
F: 07 4725 4995
E: cctsals@viadux.com.au

WANG COMPONENTS

CNR GIBSON STREET & SANDFORD ROAD, WANGARATTA, VICTORIA 3677
PHONE 03 5722 7400 / FAX 03 5722 7444

All WANG trademarks and logos are owned by Wang Components All other brand or product names are trademarks or registered marks of their respective owners Because we are continuously improving our products and services, Wang Components reserves the right to change specifications without prior notice
AP0315 © 2015 Wang Components All Rights Reserved.

