

KALDEWEI

Kaldewei Puro Duo 1700x750x420 with Exafill

AUSTRALIAN BATH & SHOWER FLOOR INSTALLATION

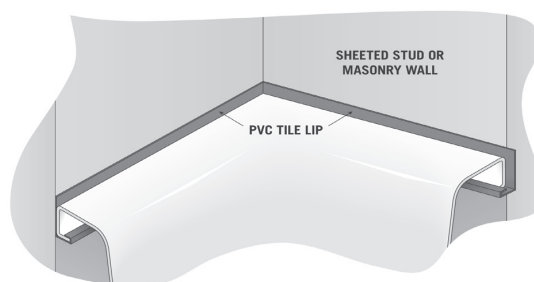
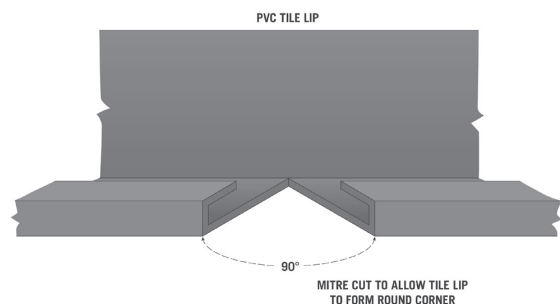
Australian Standard 2023/1995 Section 1.5 specifies, "A built-in bath shall be provided with a tiling flange or bead not less than 10mm in height".

When handling steel enamel baths, care must be taken that they are treated correctly. This applies to their transport, unpacking and installation.

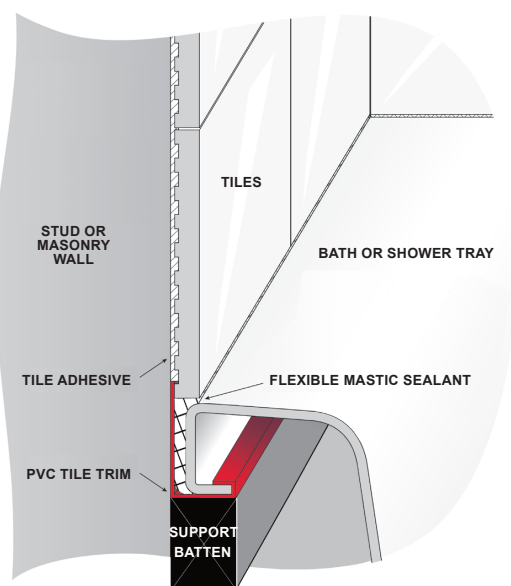
Kaldewei recommends that baths be fitted during the final installation and that the bath be covered until all the building work has been completed.

This bath has been supplied with sufficient high impact rigid PVC modified grade material to allow, where necessary, for the bath to be flashed along the full length and ends to conform with the Australian standard.

This clip on material should be cut to the required lengths, mitred at the corners, and the area where the flashing material and the rim of the bath meet, should be filled with a mould-resistant Sanitary Grade sealant.



When the bath is installed, the minimum distance from the outside edge of the flange to the finished edge of the tiles shall be 10mm. The exposed area of the flange shall have continuous fall to the inside of the bath.



REFERENCES

Australian Standards AS. 3470-2010

Fig 3.2 Typical Bath Junctions

Section 3. Installations 3.6 Pre Formed Shower Bases

3.7 Baths with showers over them

3.8 Baths and Spas

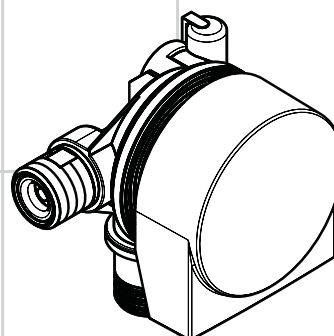
Plumbers, please ensure a copy of the Installation Instructions are left with the end user for future reference

Kaldewei Puro Duo 1700x750x420 with Exafill

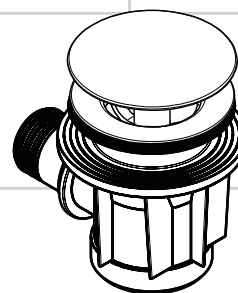
hansgrohe

DE Montageanleitung
EN Assembly instructions

2
3



Exa-Bathtub Filler
58112000

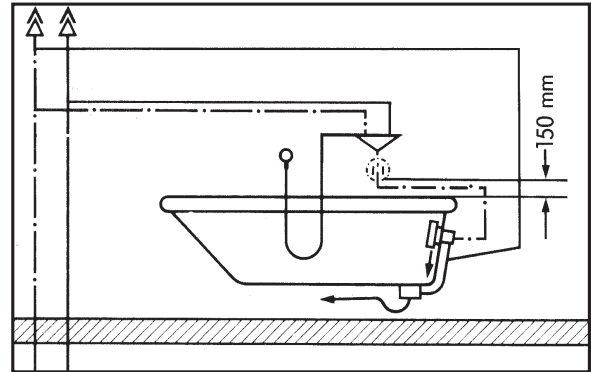


Push-Open
50107000

Kaldewei Puro Duo 1700x750x420 with Exafill

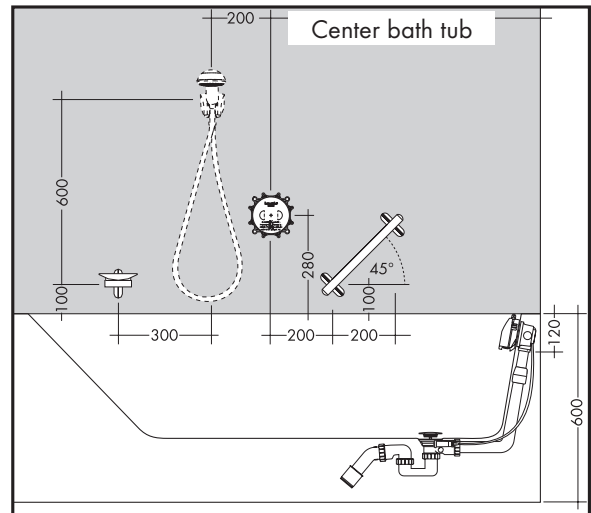
Installation to DIN 1988

While installation of the bath mixer is made watch that the air gap fitting (DB) is min. 150 mm above the upper edge of the bath tub.



Installation to EN 1717

When assembling the iBox universal with integrated safety combination (HD) pay attention that the middle of the mixer is min. 280 mm above the upper edge of the bath tub.



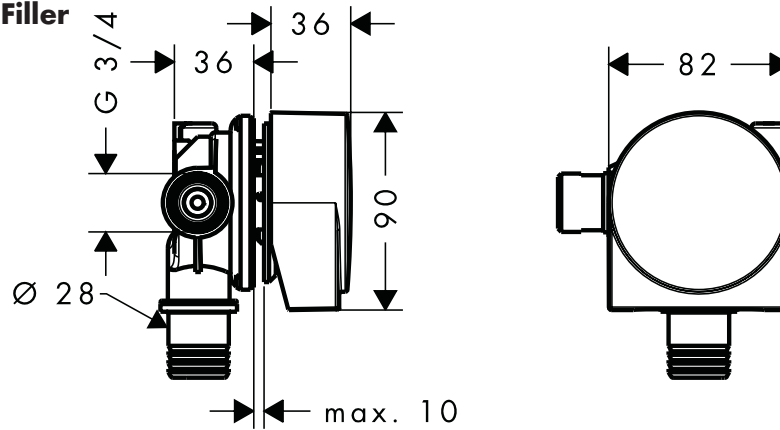
After completion the whole installation must be flushed.

IMPORTANT! There must be an access door for maintenance.

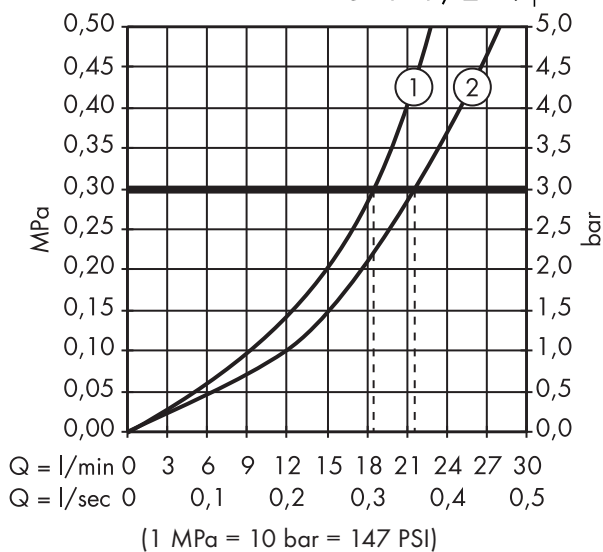
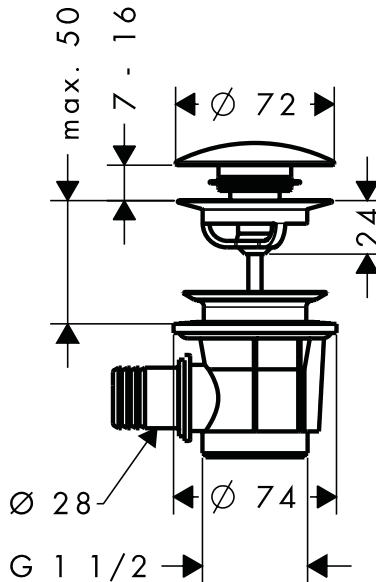
There is no guarantee of Hansgrohe for components and their connections produced by third parties.

Kaldewei Puro Duo 1700x750x420 with Exafill

Exa-Bathtub Filler
58112000



Push-Open
50107000

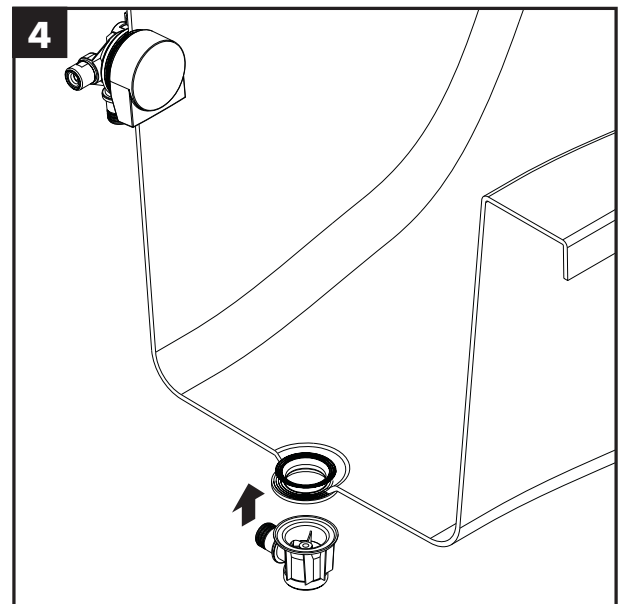
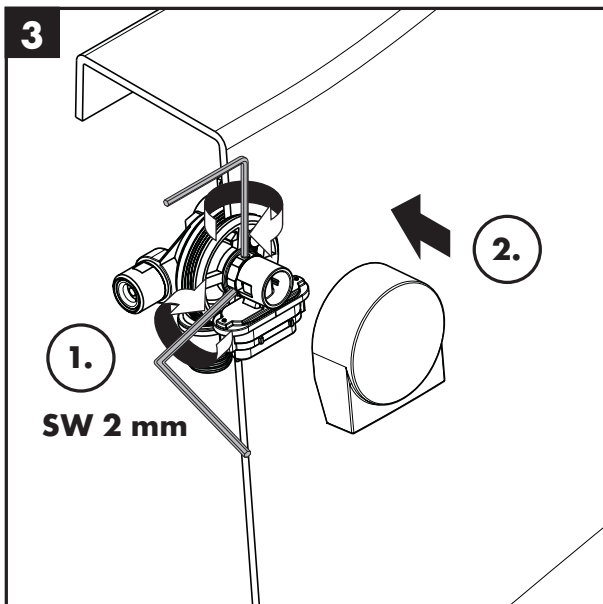
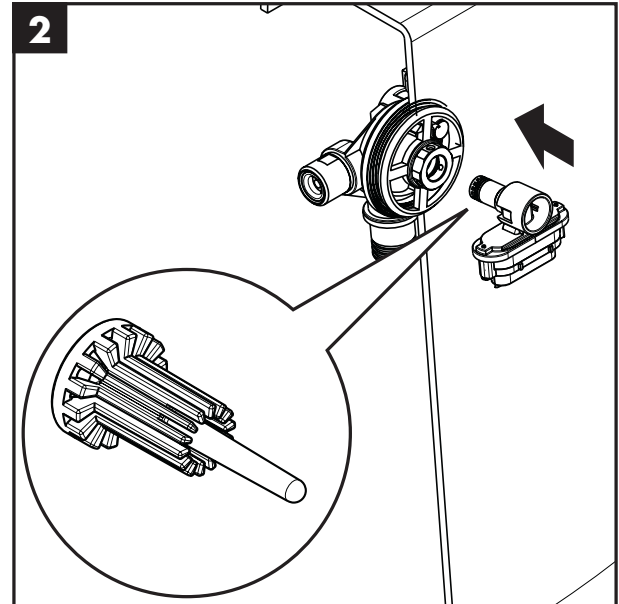
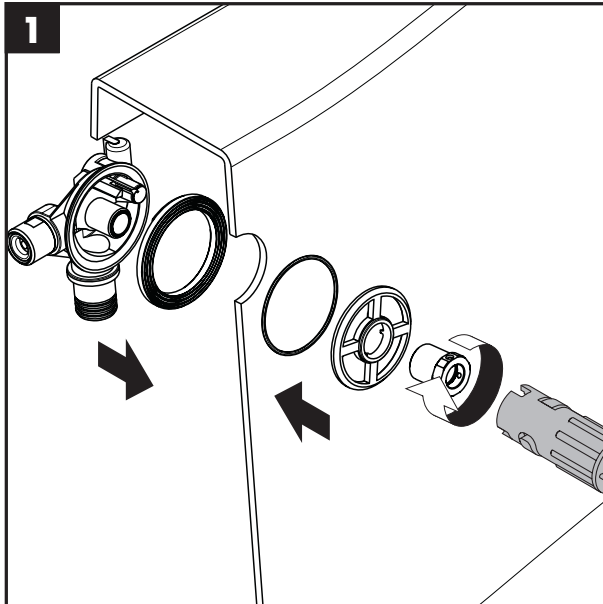


- 1 with flow limiter
- 2 without flow limiter



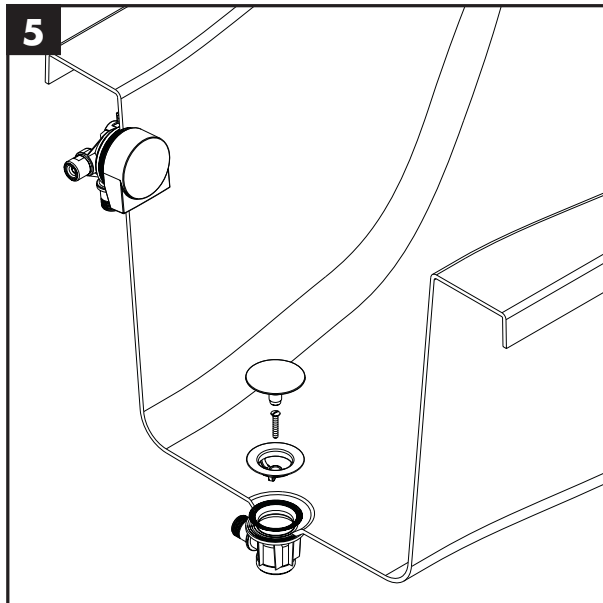
KALDEWEI

Kaldewei Puro Duo 1700x750x420 with Exafill



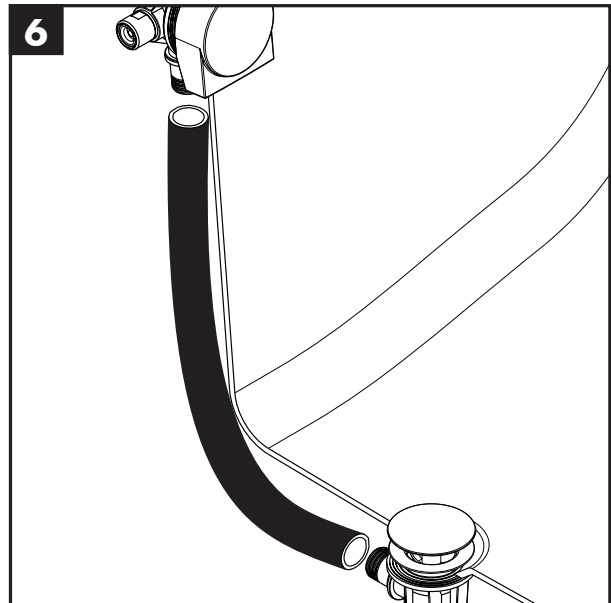
KALDEWEI

Kaldewei Puro Duo 1700x750x420 with Exafill



DE Das Ablaufventil darf nur in Wannen mit Überlauf eingesetzt werden.

EN The drain valve may only be installed in tubs with an overflow opening.

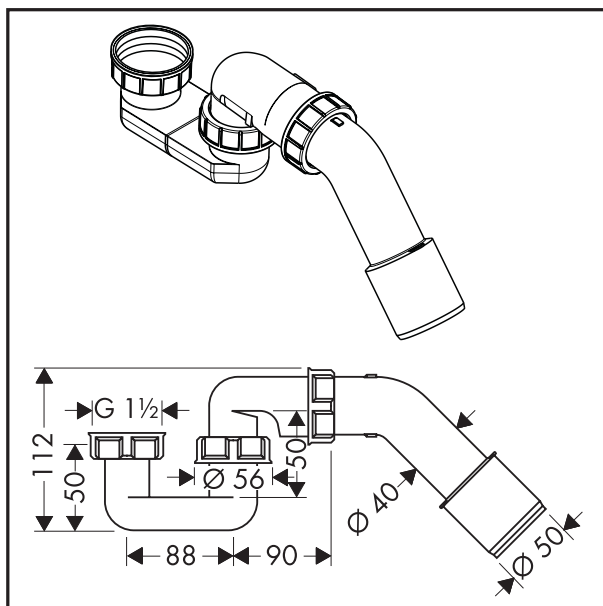


DE ACHTUNG! Der Verbindungsschlauch (nicht im Lieferumfang enthalten) darf nicht abknicken. Es müssen die Angaben des Schlauchherstellers beachtet werden.

Hansgrohe übernimmt keine Gewährleistung für Fremdbauteile und deren Verbindungsstellen.

EN IMPORTANT! Don't bend the connection hose (not part of delivery). You must follow the manufacturer instructions.

There is no guarantee of Hansgrohe for components and their connections produced by third parties.



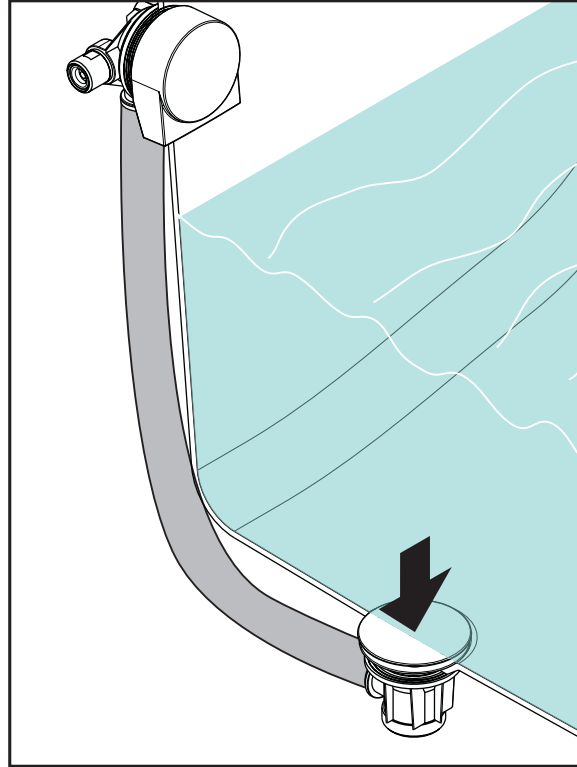
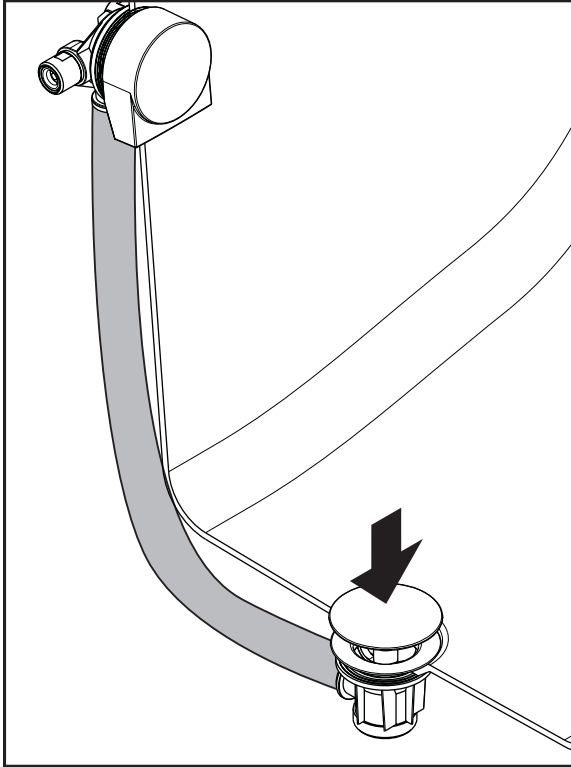
DE Optional erhältlich:
Hansgrohe Wannensifon #56373000.

EN Ordered seperately:
Hansgrohe bath trap #56373000..

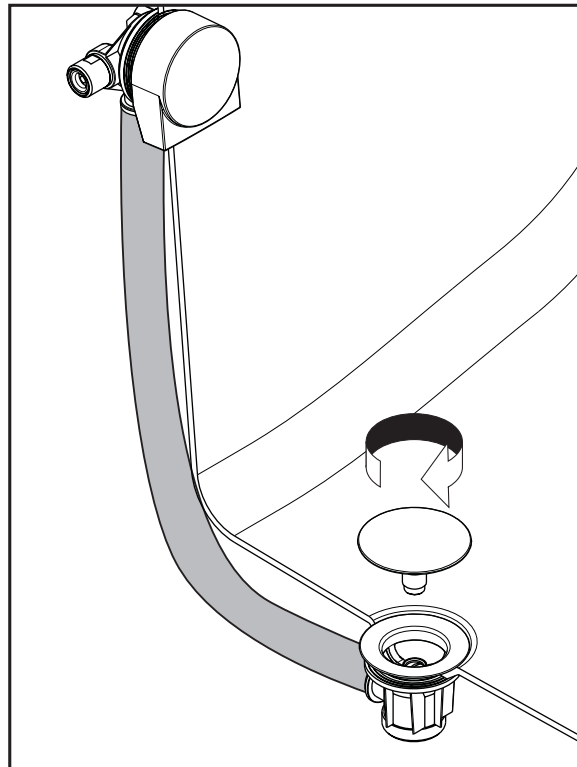
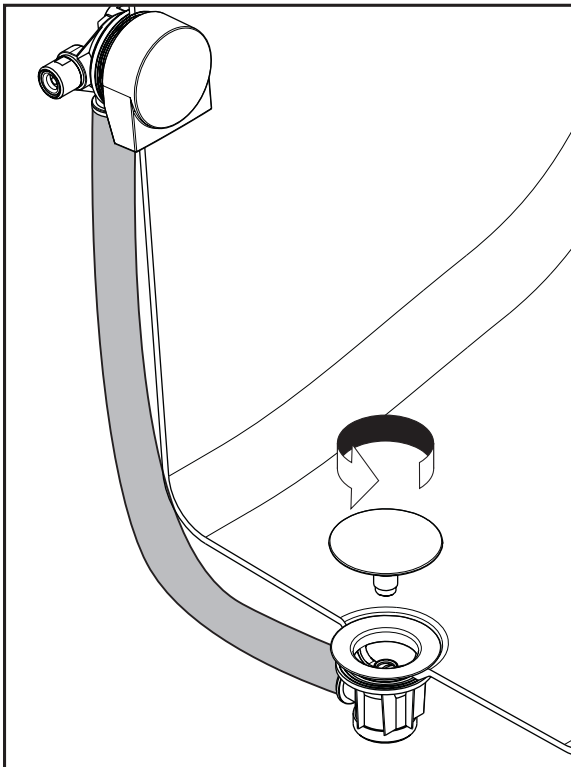
KALDEWEI

Kaldewei Puro Duo 1700x750x420 with Exafill

Bedienung / Operation



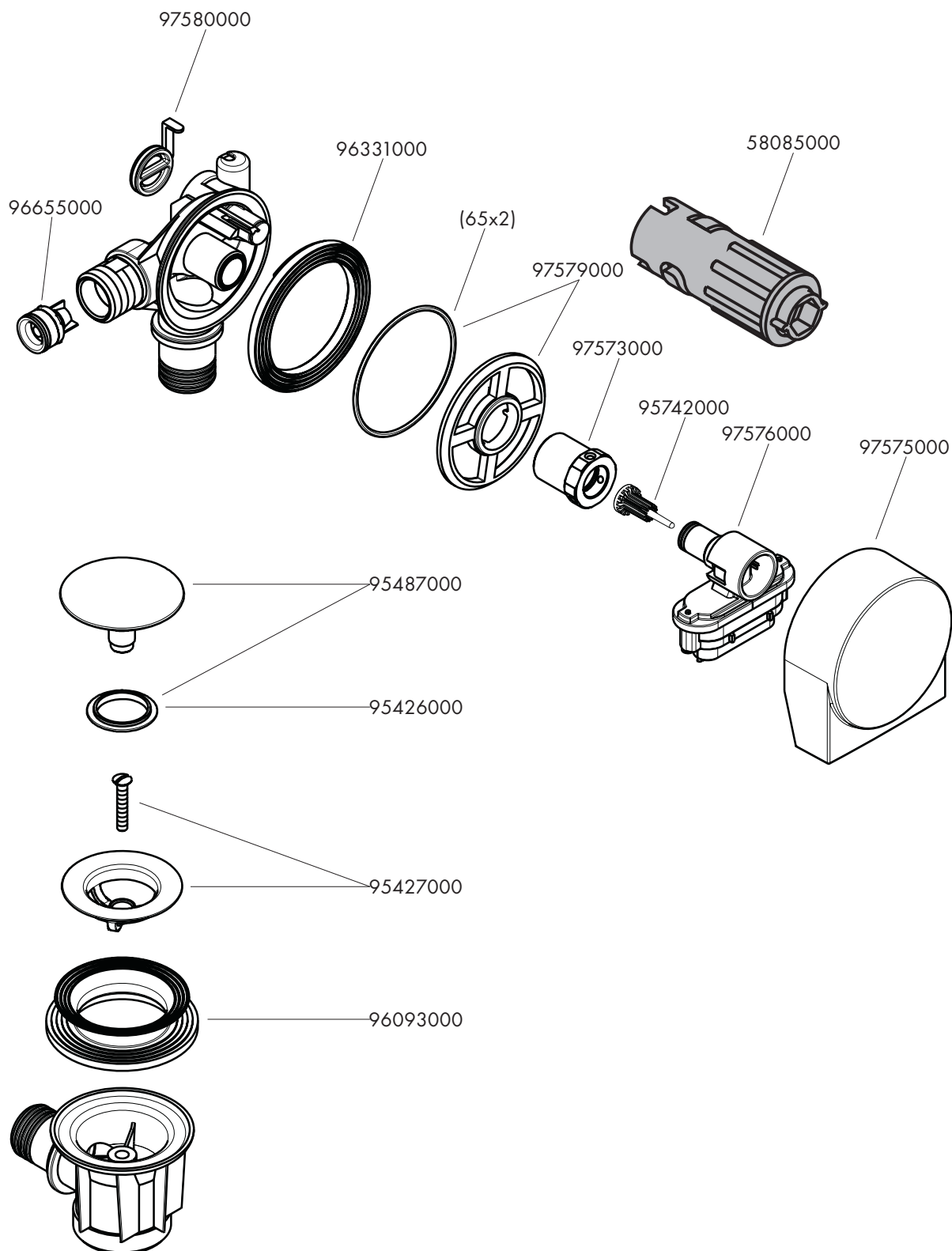
Reinigung / Cleaning



Plumbers, please ensure a copy of the Installation Instructions are left with the end user for future reference

KALDEWEI

Kaldewei Puro Duo 1700x750x420 with Exafill



Plumbers, please ensure a copy of the Installation Instructions are left with the end user for future reference