

MULTICLEAN M4 / IN-WASH

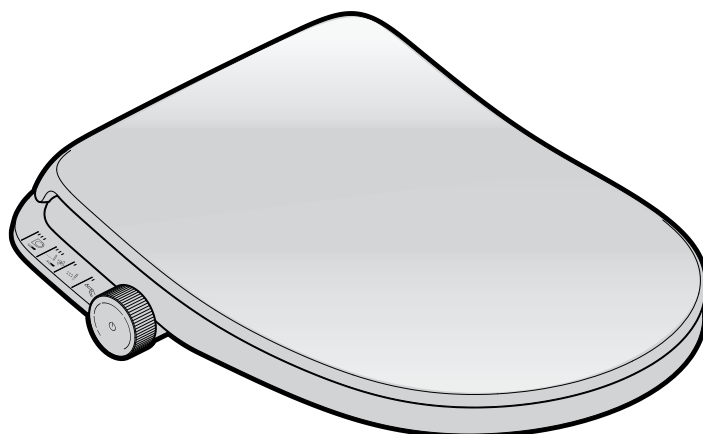
A804053S0R

A804054S09


A80405300R

A804054009

INSTALLATION MANUAL

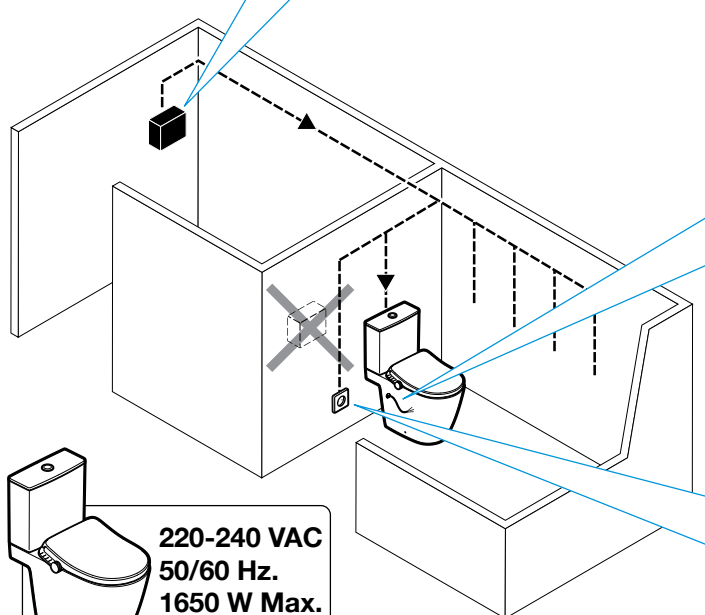
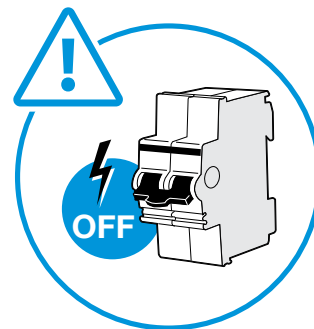
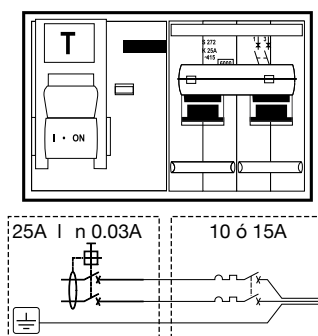


- The product must be installed by a licensed electrician according to AS/NZS 3000 - Australian wiring Rules.
- Water supply connection must be done by a licenced plumber in accordance to AS3500 and National Construction code Vol 3
- Before installation, read thoroughly this installation manual and the included safety precautions leaf. Parts must be installed according to the instructions.
- Rain water, demineralized water, sea water or grey water are not suitable to operate this equipment. This product can only be connected to normal potable drinking water.
- Do not damage electrical connection components.
- The recommended water supply pressure is 150 KPa to 500 KPa. Operate equipment within the recommended water pressure.
- Water supply temperature must be between 10 - 30°C. Ensure the correct water temperature is maintained.
- Do not use a water hose other than the one provided with this product.
- Make sure that this product is correctly earthed to ground. (If the product is not earth-connected, there is a risk of electric shock).
- Prior to the installation, have an adequate electrical outlet available, according to the current local legislation.
- Dual check valve must be fitted before cistern stop.
- Please note this Bidet Douche Seat is approved under WMK26478 and incorporates an integral airgap as high hazard protection in compliance to AS2845.2.2010. and WMTS 051. It meets the requirements of AS/NZS3500.1 and National Construction Code and no additional backflow device is required to be fitted (Apart from dual check valve supplied with unit).

Technical information	
Power Supply	220-240Vac 50/60Hz
Power Wattage	1650W
IP Rating	IPX4
Note: Any electrical work connected on this project must be installed by qualified personnel, in accordance with AS/NZS 3000 Wiring Rules.	
Certification	
Watermark	AS2845.2/AS2010 Certificate No. WMK26478
RCM	 R-NZ



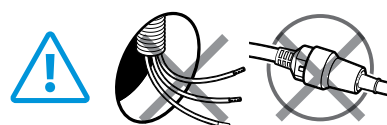
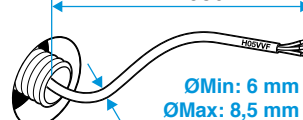
A
According to current legislation



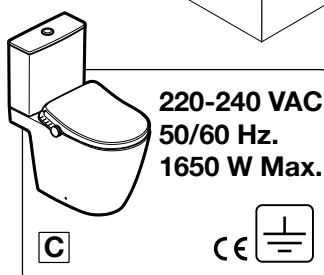
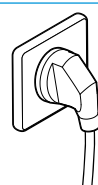
B
Mandatory

3 x 1mm²

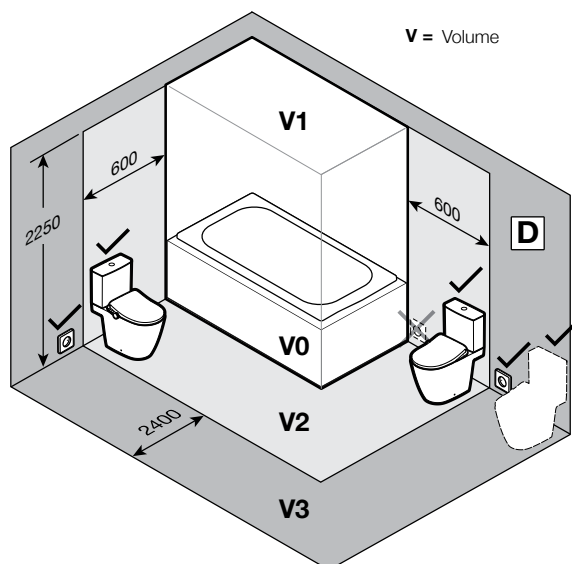
L Min. = 650 mm



B



V = Volume



This electric toilet may be installed in zone 2, although if connected to a wall-socket, it shall always be installed in zone 3. These recommendations are valid as long as the installation is compatible with the country regulations. This product (IPX4) shall not be exposed to water jets for cleaning purposes.



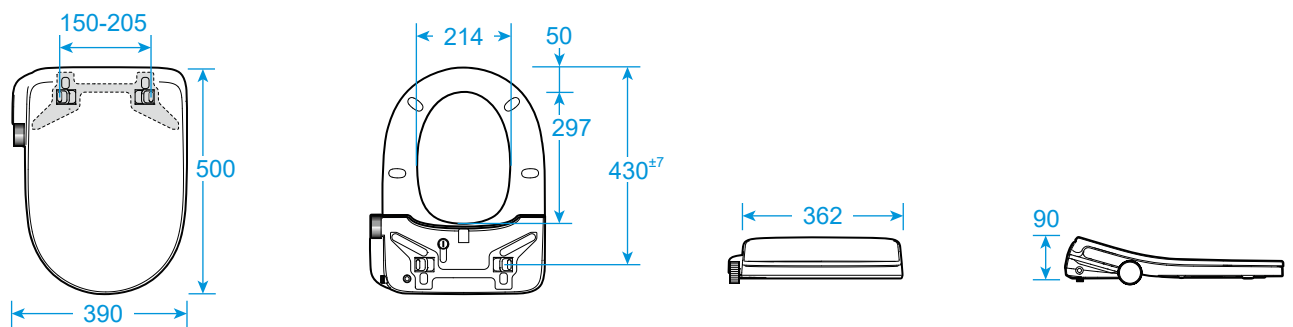
Installation area

- A** The electrical installation must be protected by means of a IDn 0,03A and 25A differential switch and a magnetothermal switch of 10 or 15A. Both switches must be placed outside the bathroom.
- B** The power connection of this product must be permanently connected to a fixed electricity line. Placement of a plug is not acceptable.
- C** The electrical line to be installed must be a hose consisting on three drivers (phase, neutral, earth) of at least 1mm² of section exclusively dedicated to the WC. In the event that, due to failure, it is necessary to handle or replace the power cable, this must only be done by Technical Service staff.
- D** The range of function of the WC is 220-240V, 50/60Hz.
- E** Neither component nor connection of the WC must be operated.

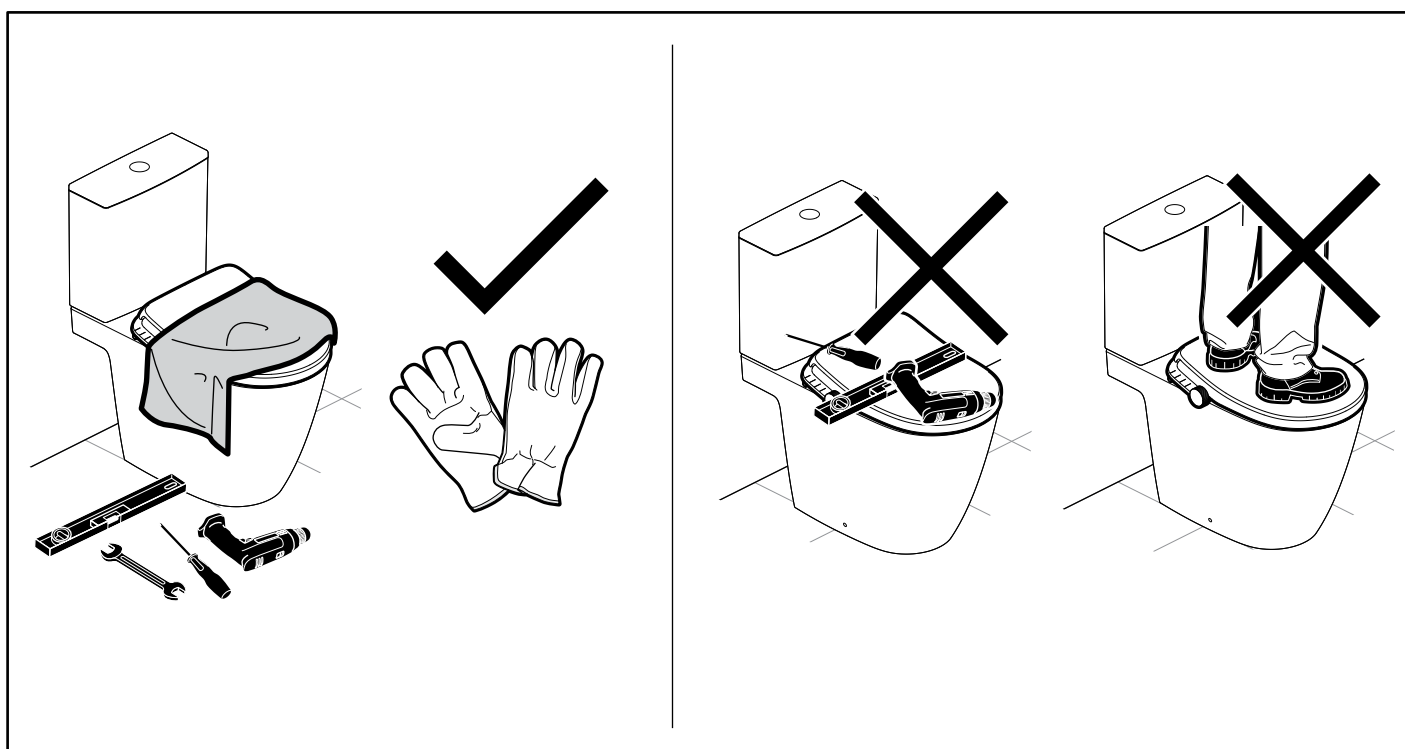
No electrical device must be introduced inside the WC.

This product must be installed by qualified personnel, in according with the national current regulation.

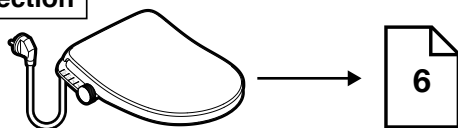
ROUND



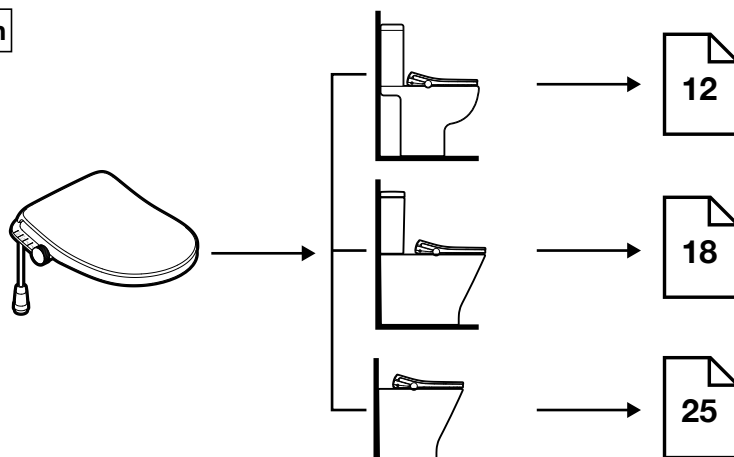
[mm]

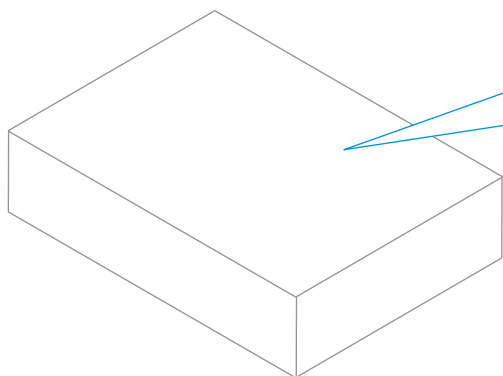


Exposed connection

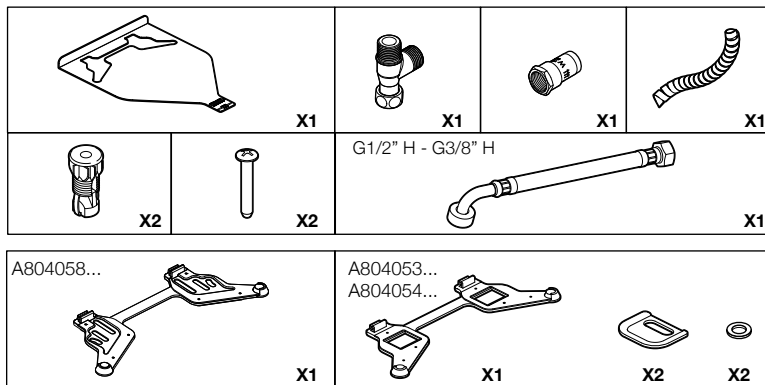
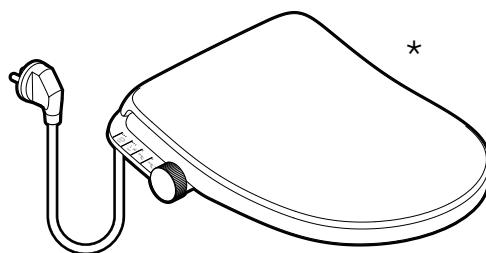


Hidden connection



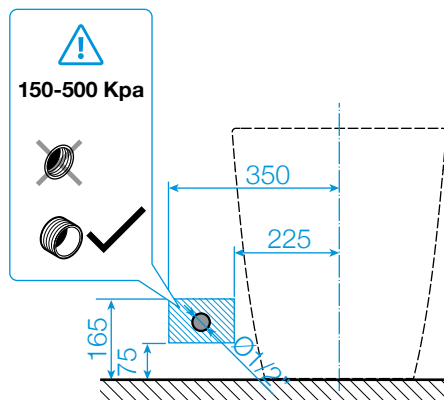


*
According to model



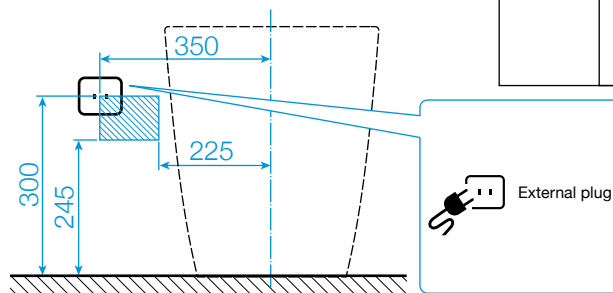
1 Water Connection

Recommended installation

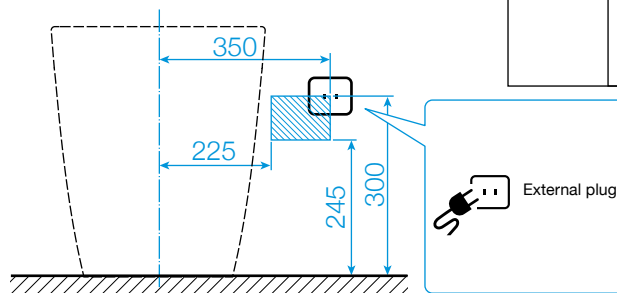


2 Electrical

Option **2a**



Option **2b**

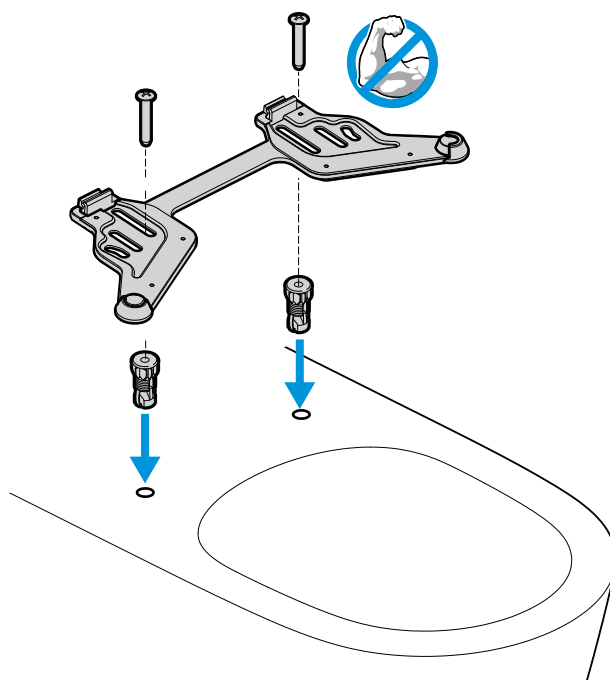
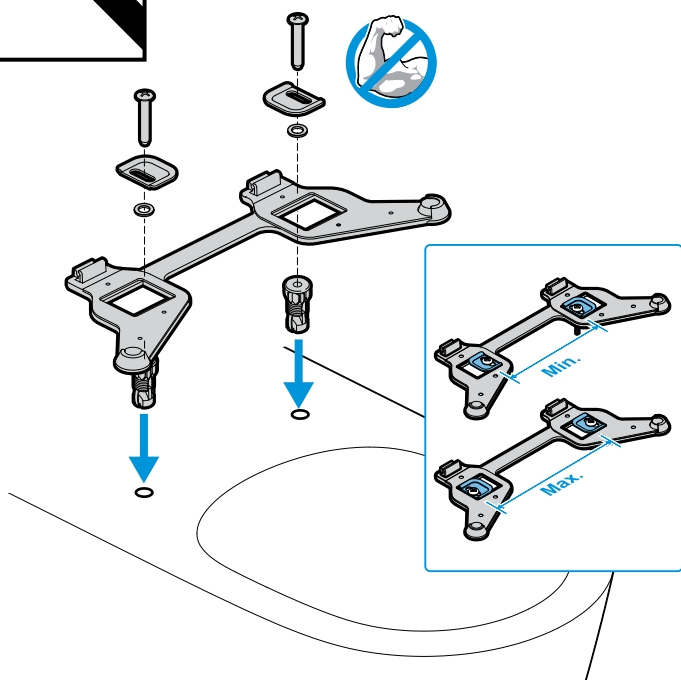




1

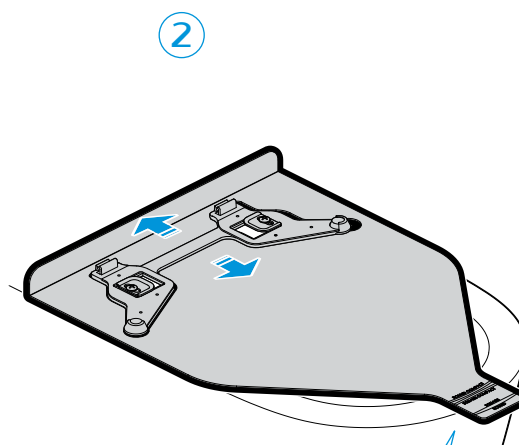
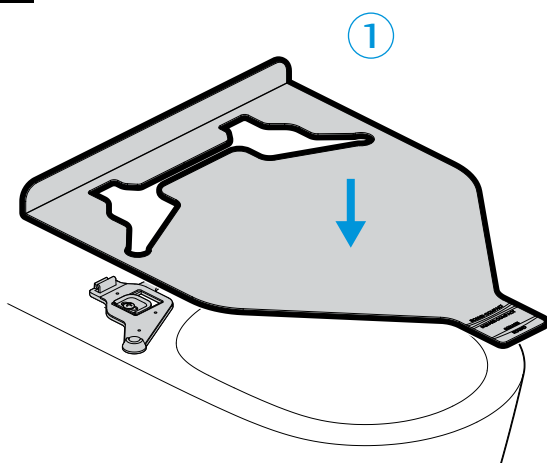
A804053..
A804054..

A804058...



Different position options to fix depending on the porcelain.

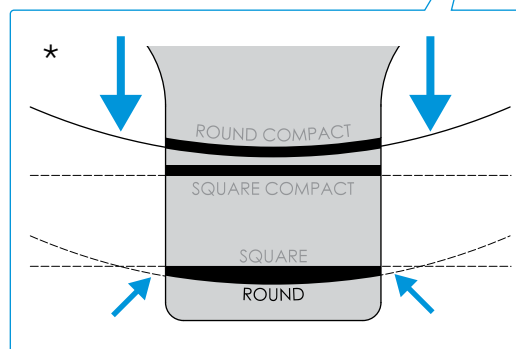
2



Seat template supplied

*

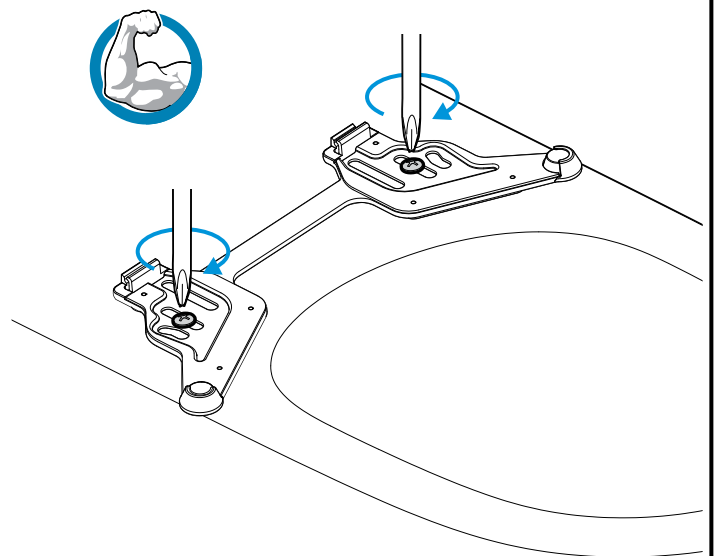
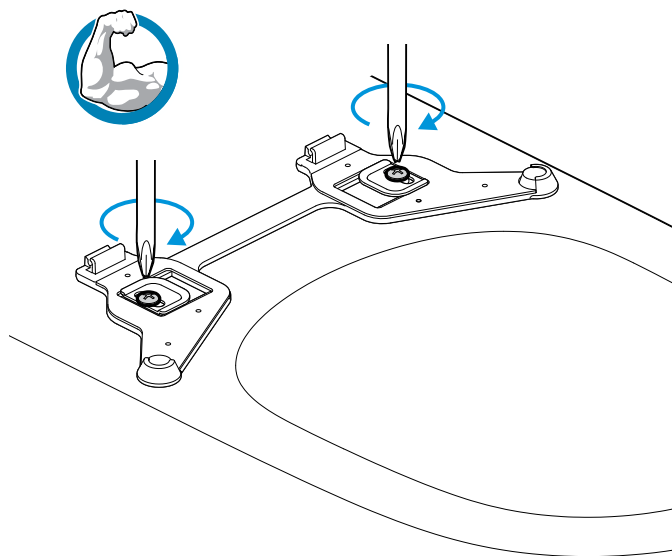
According to model



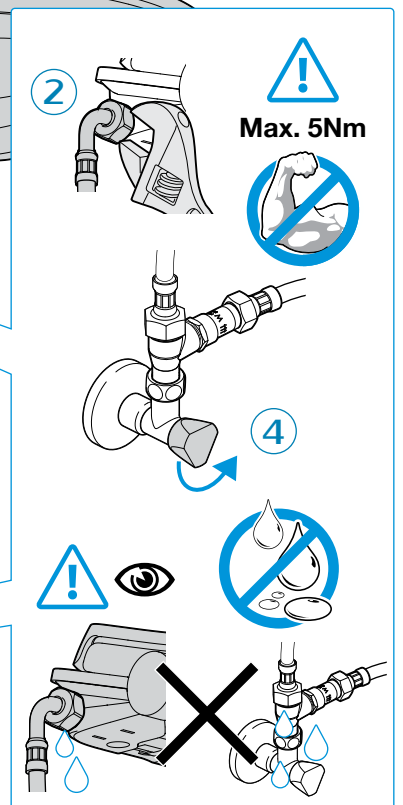
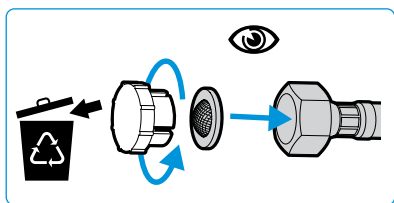
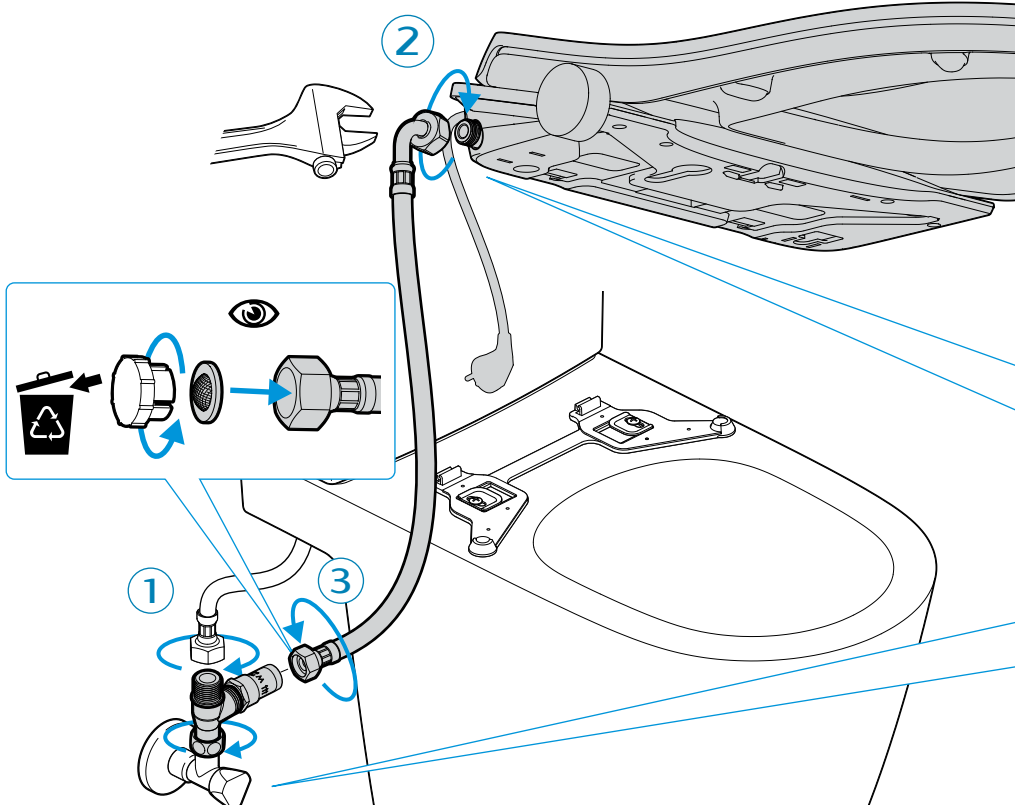
3

A804053..
A804054..

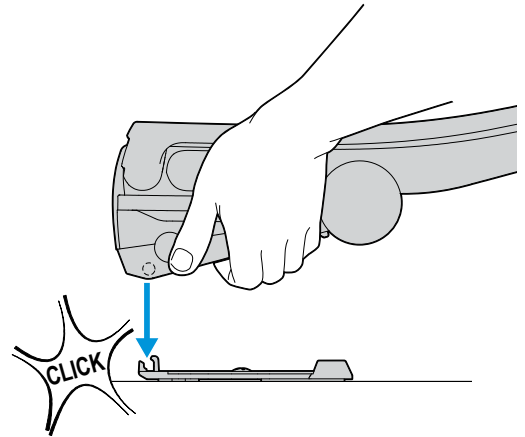
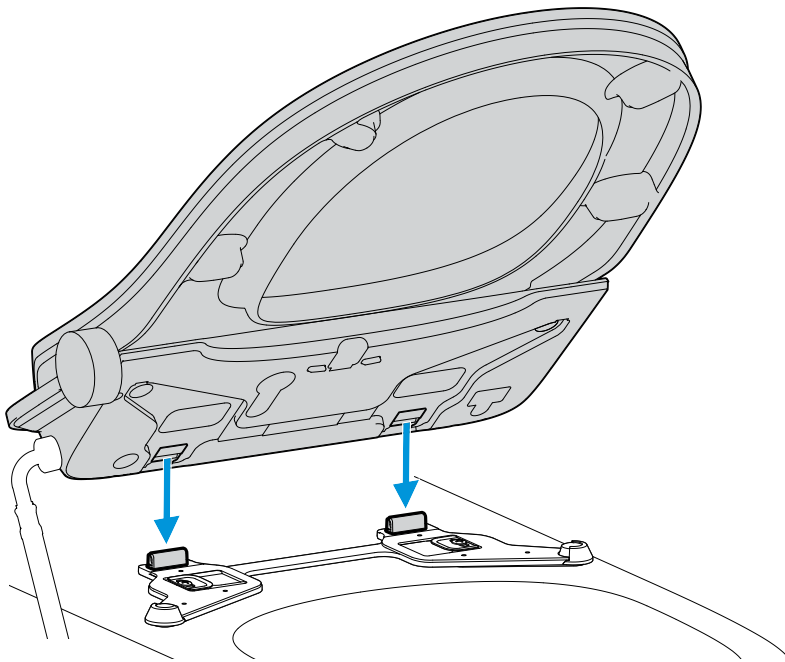
A804058...



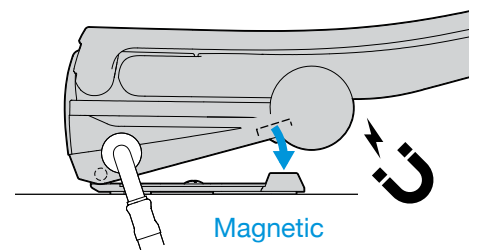
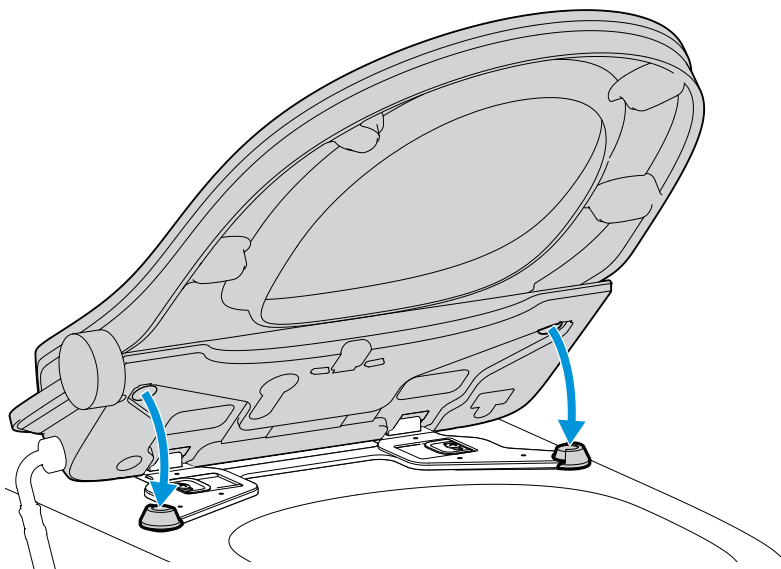
4

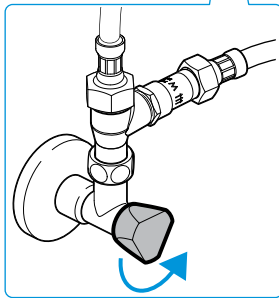
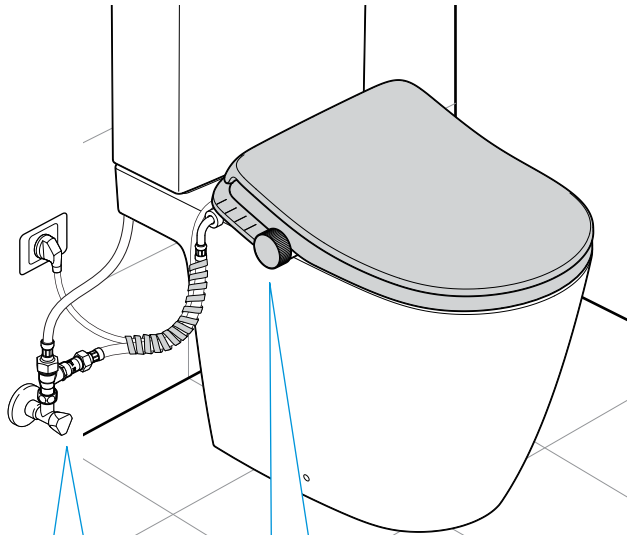
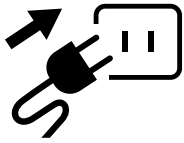
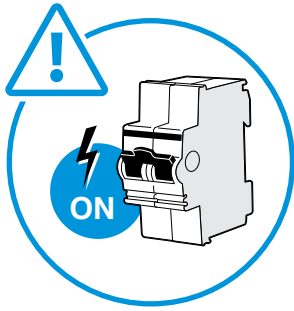


5

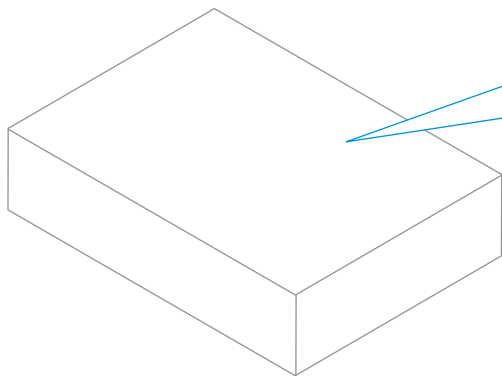


6

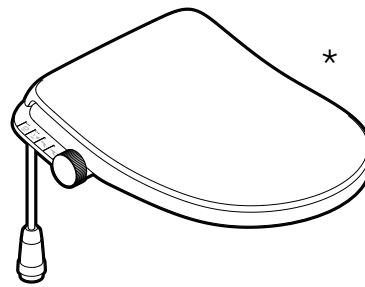


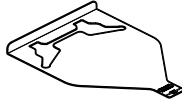


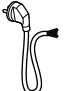


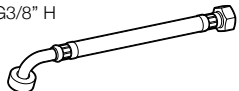
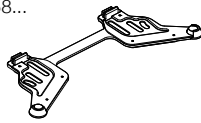
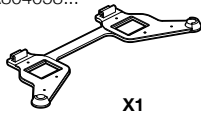




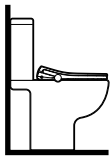
For Installation and general
troubleshooting refer to
seperate user manual



★
According to model



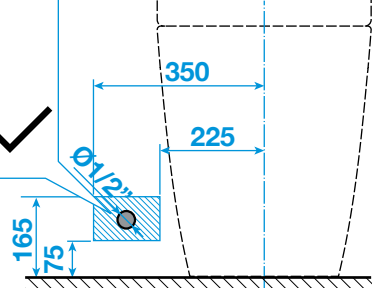
 X1	 X1	 X1	 X1
 X2	 X2	G1/2" H - G3/8" H  X1	
A804058...  X1		A804053...  X1  X2  X2	



1 Water connection



150-500 Kpa



*Roca recommends this installation

Option **1a**

Items not supplied with the product.



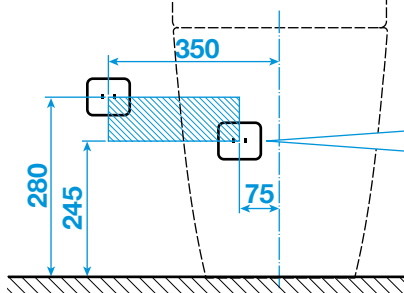
Option **1b**

Items not supplied with the product.



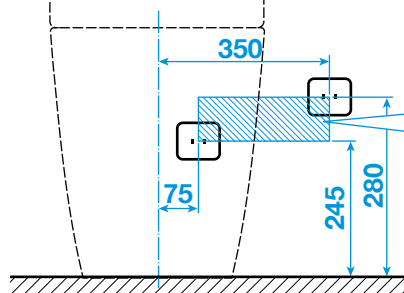
2 Electrical

Option **2a**



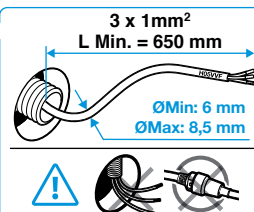
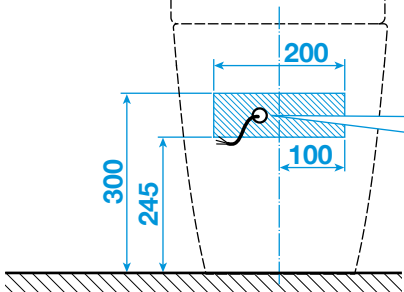
External plug

Option **2b**

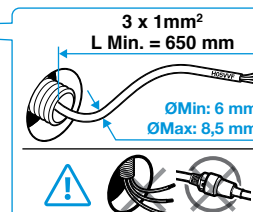
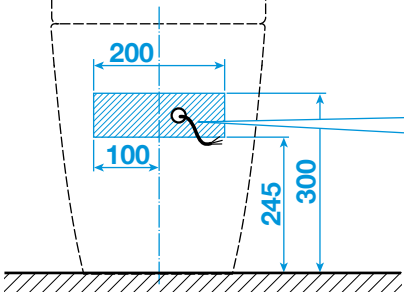


External plug

Option **2c**

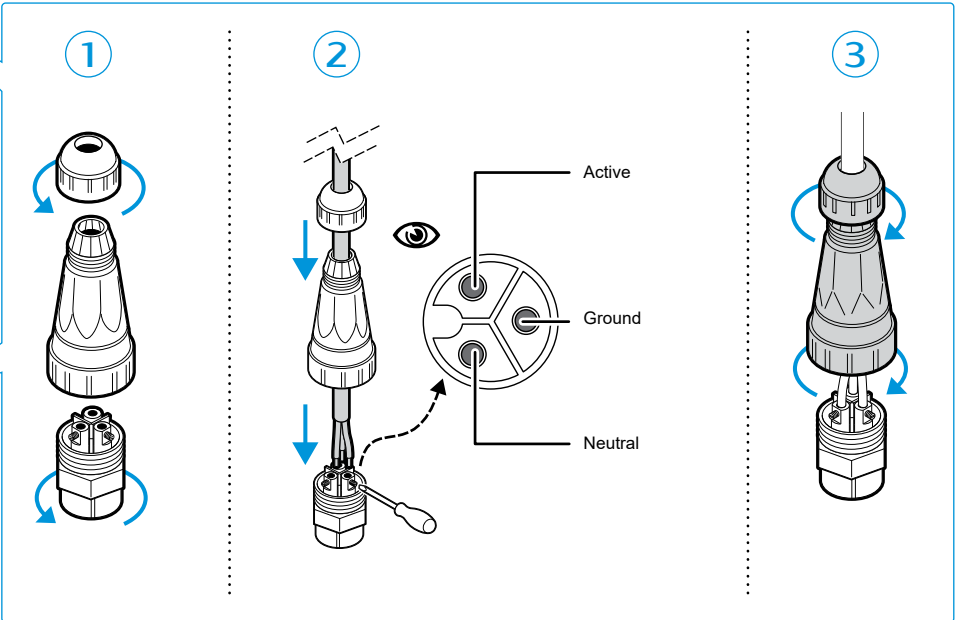
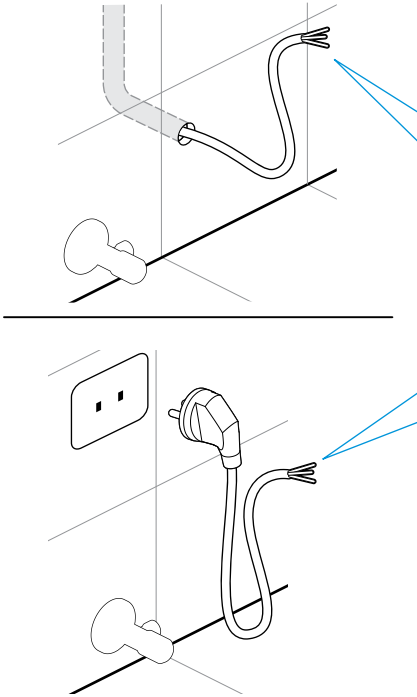


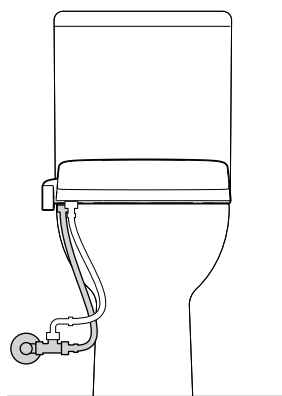
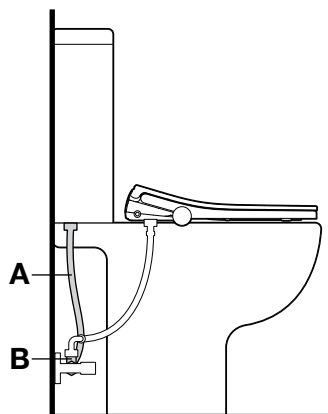
Option **2d**





1

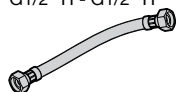




Supplied with porcelain

A

G1/2" H - G1/2" H



A80503730R

B

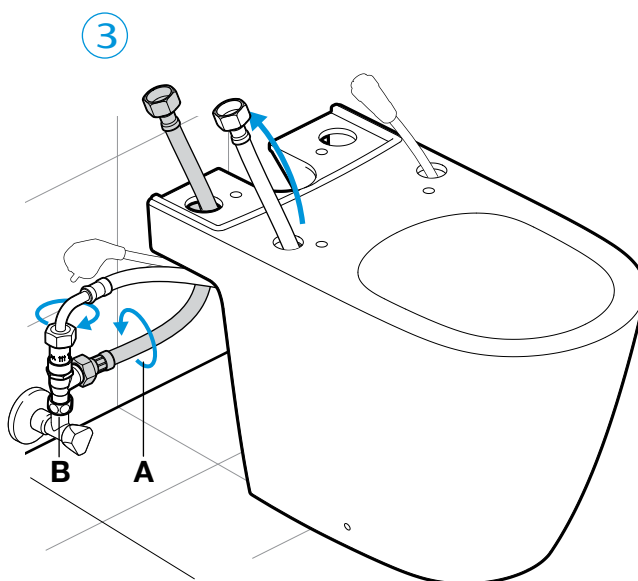
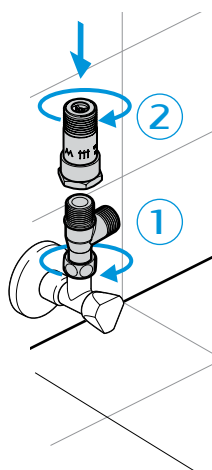
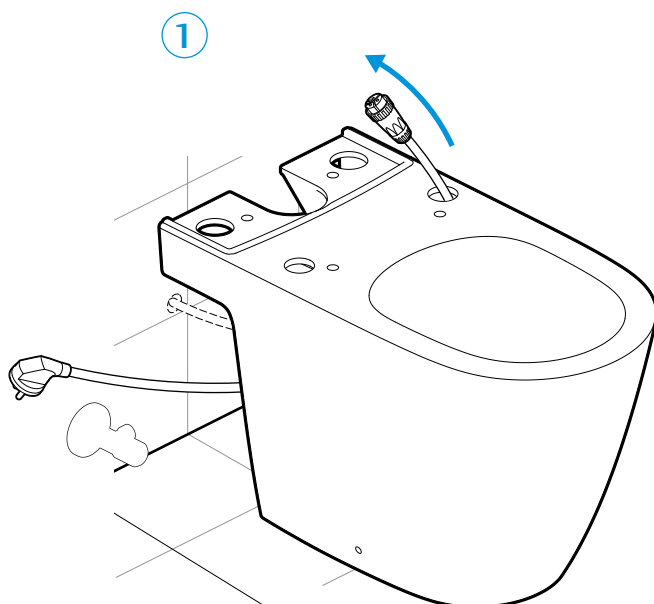


HESAS330102

G1/2" H - G1/2" M



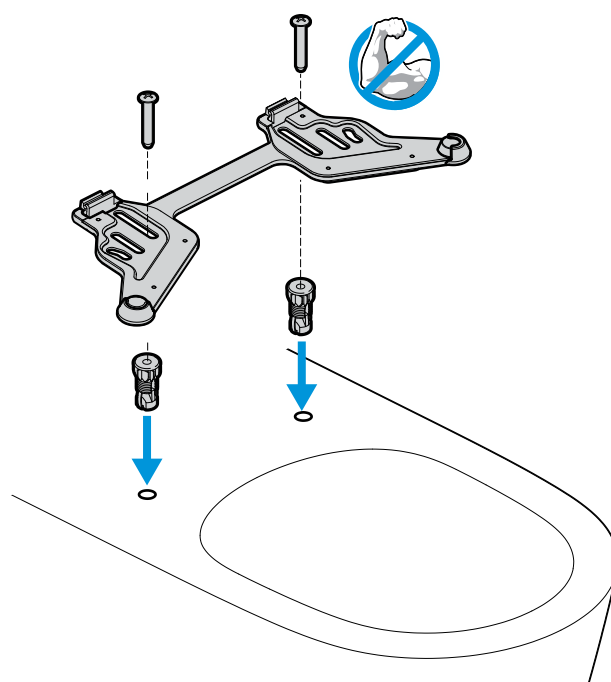
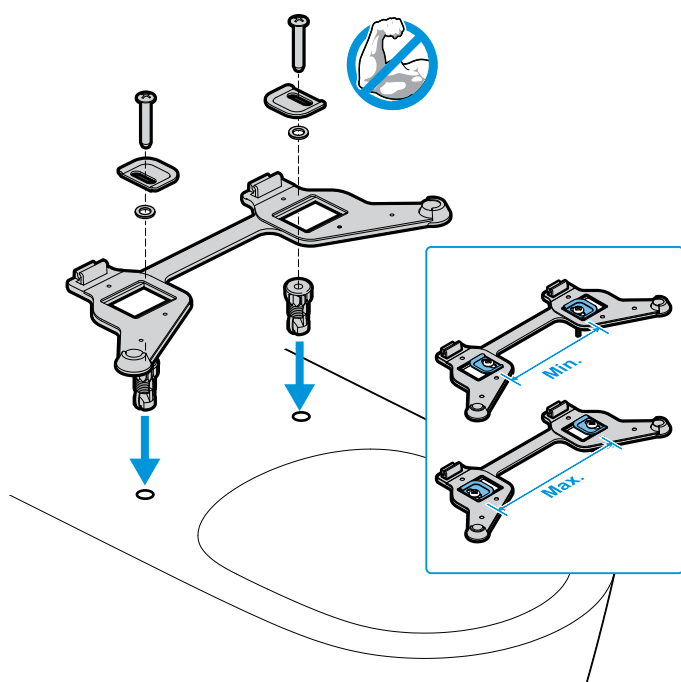
A80503720R



3

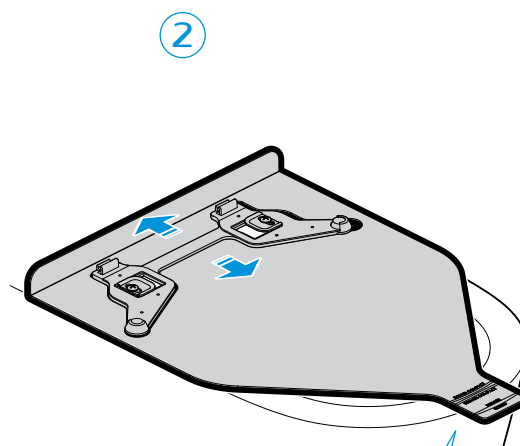
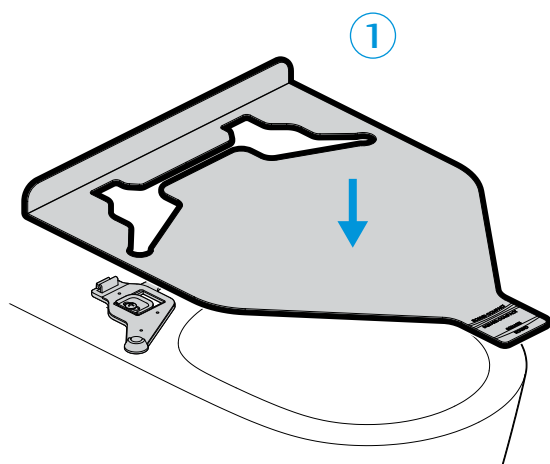
A804053..
A804054..

A804058...



Different position options to fix depending on the porcelain.

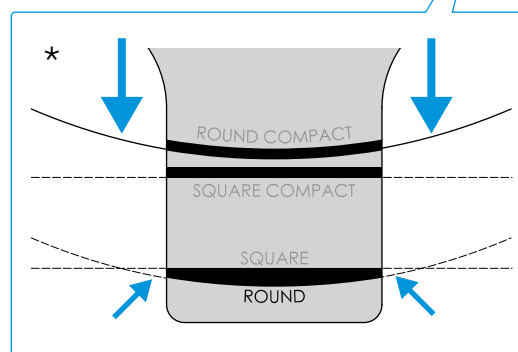
4



Seat template supplied

*

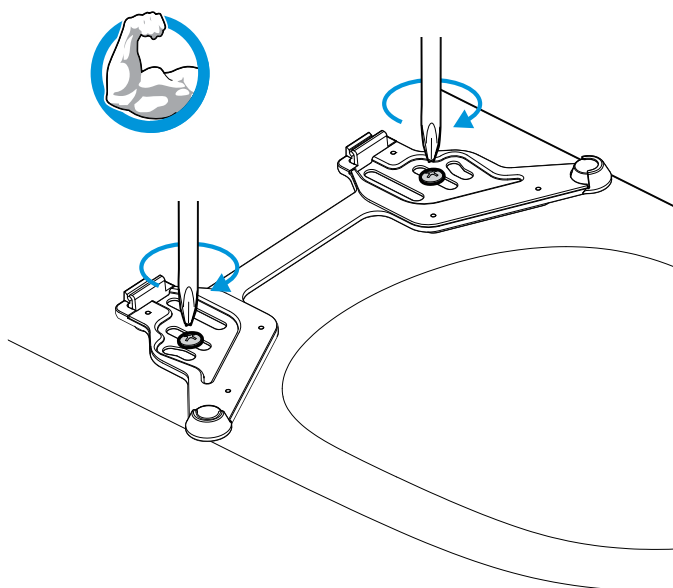
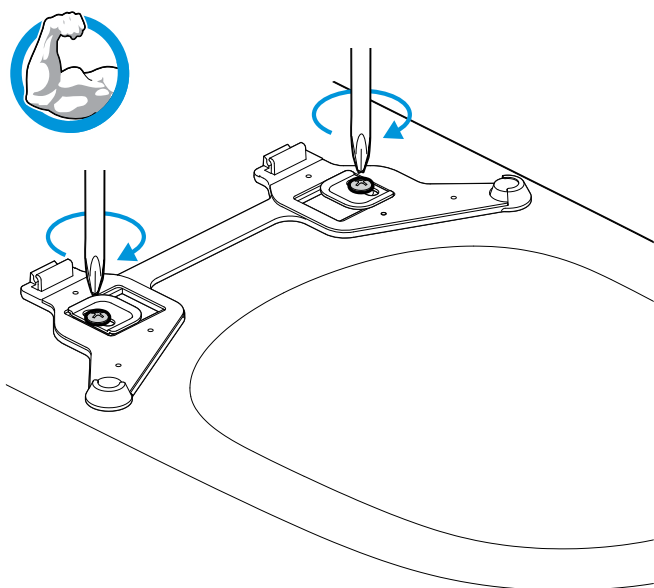
According to model



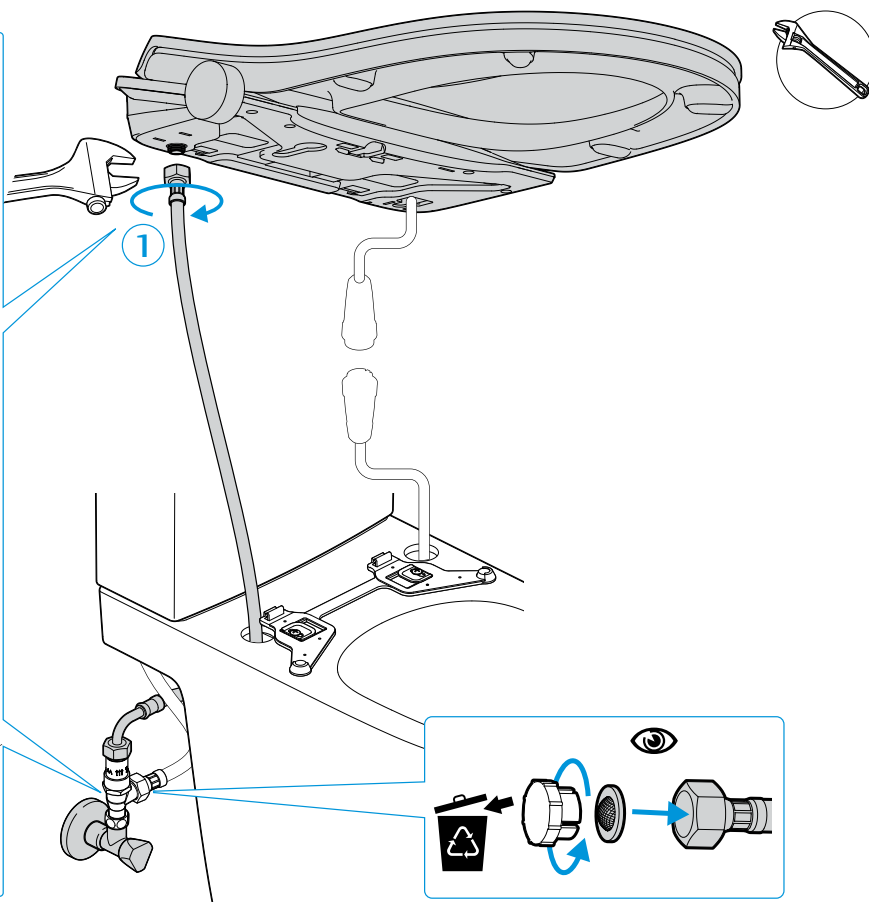
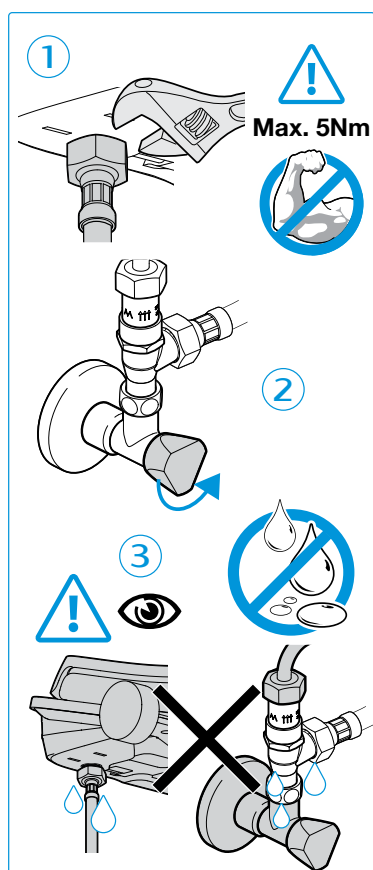
5

A804053..
A804054..

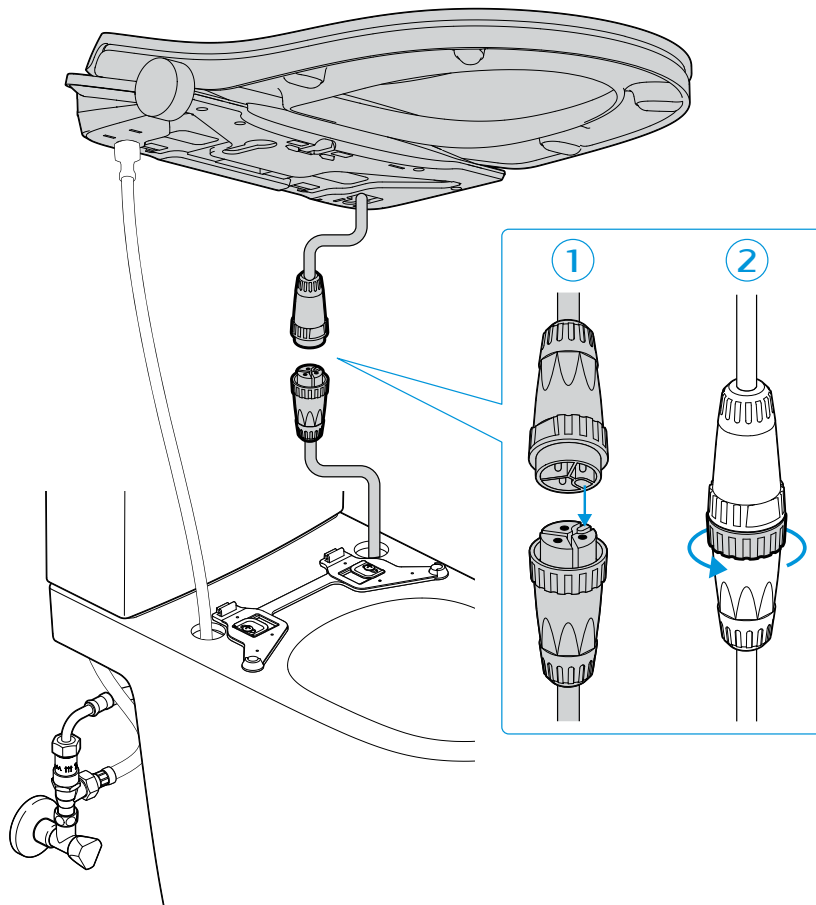
A804058...



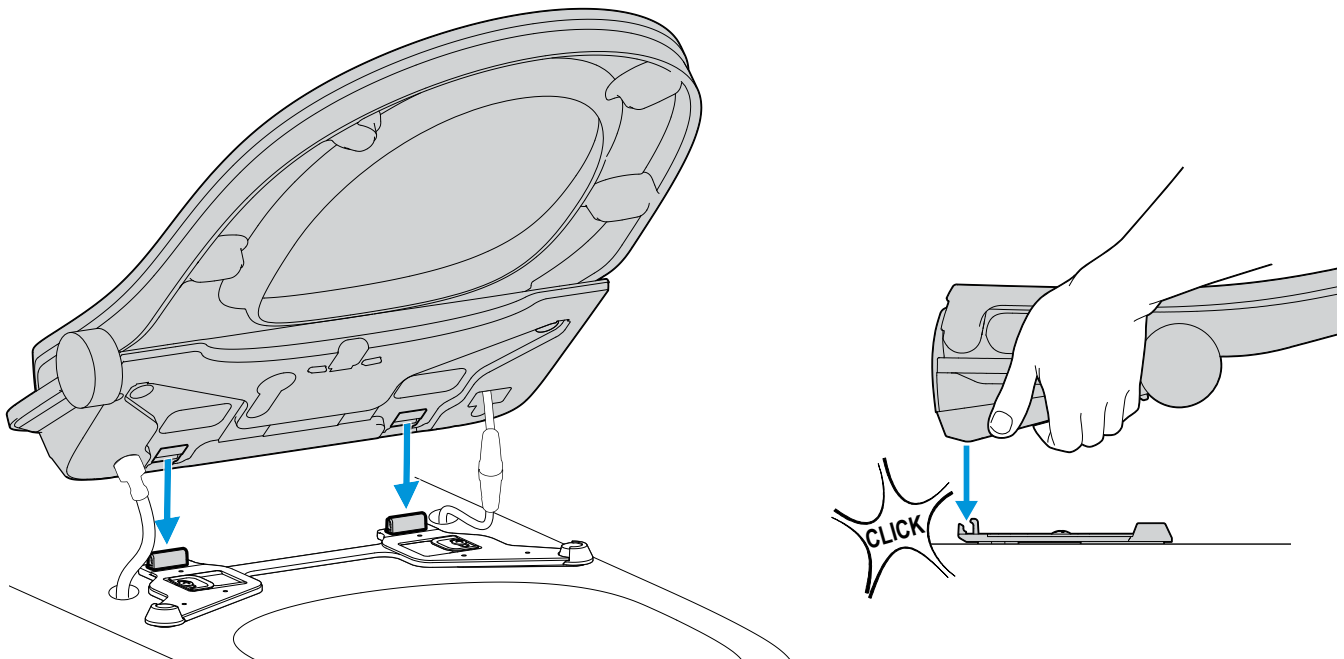
6



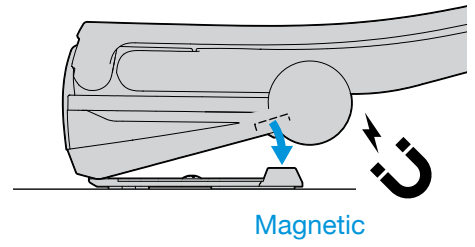
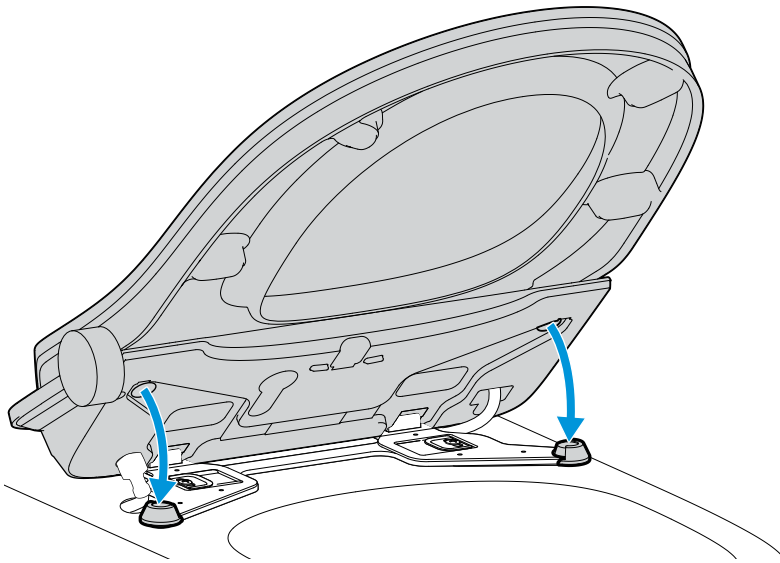
7



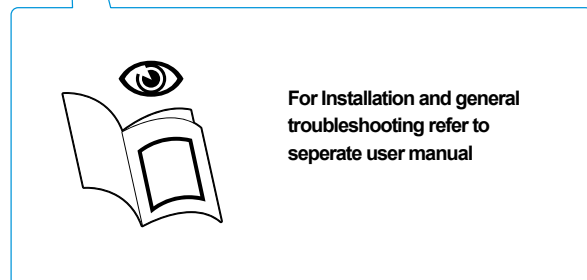
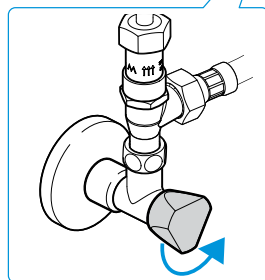
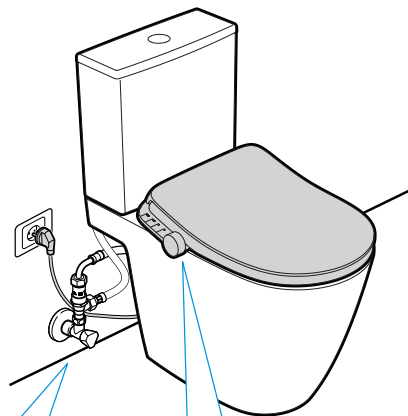
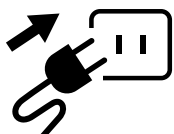
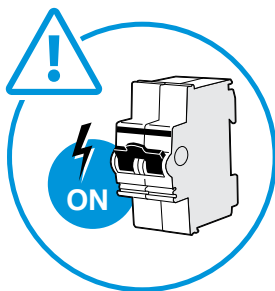
8

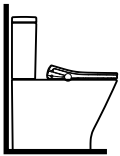


9

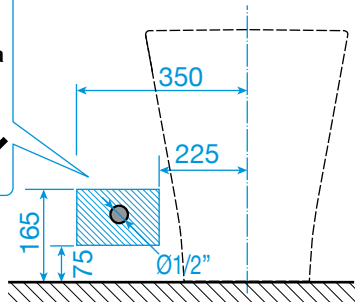


10



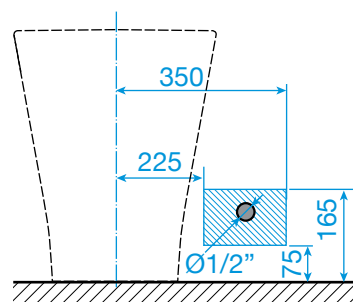
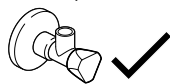


1 Water connection



Option **1a**

Items not supplied with the product.

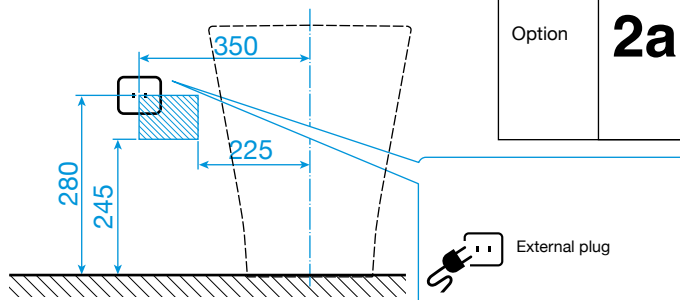


Option **1b**

Items not supplied with the product.



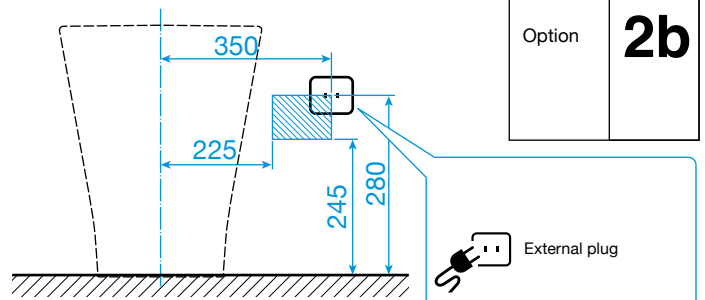
2 Electrical



Option **2a**



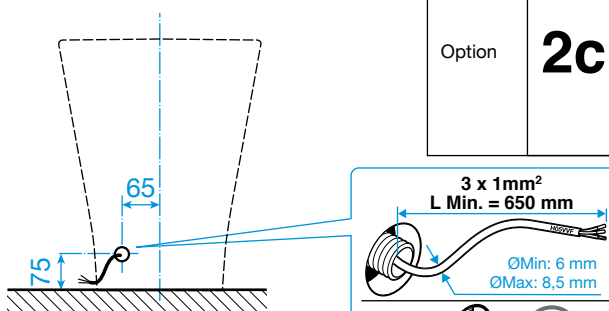
External plug



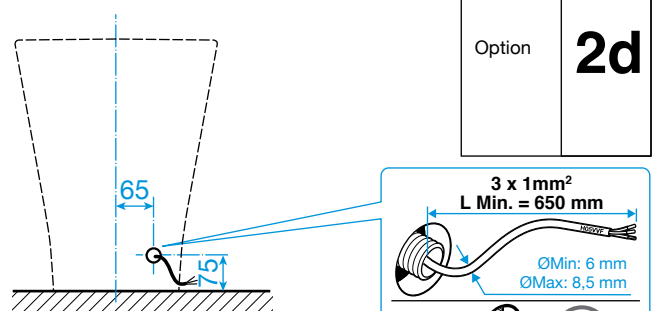
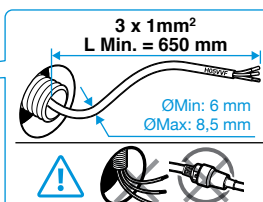
Option **2b**



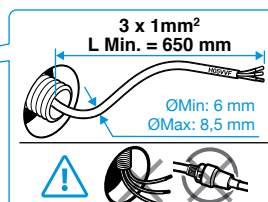
External plug



Option **2c**

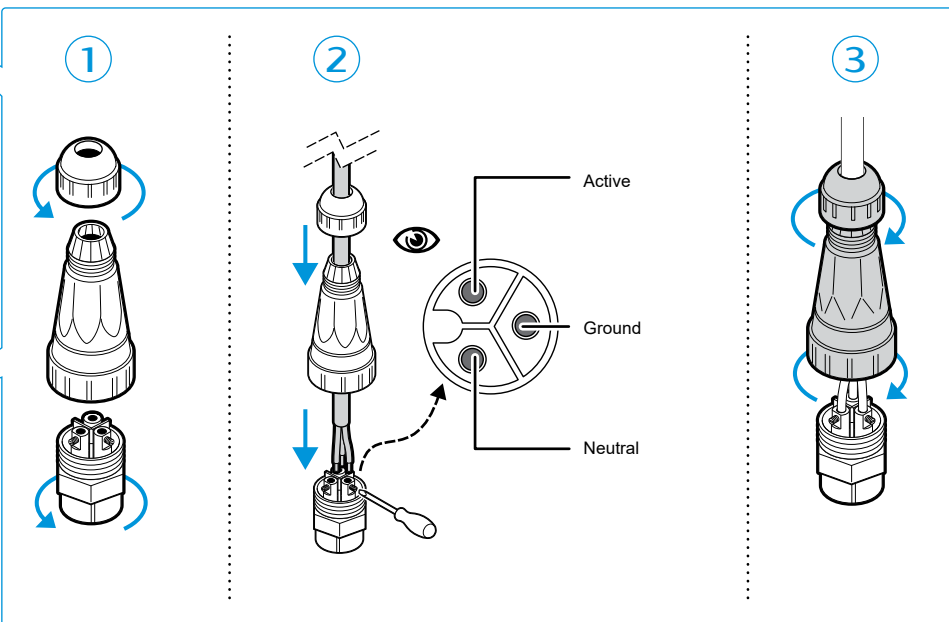
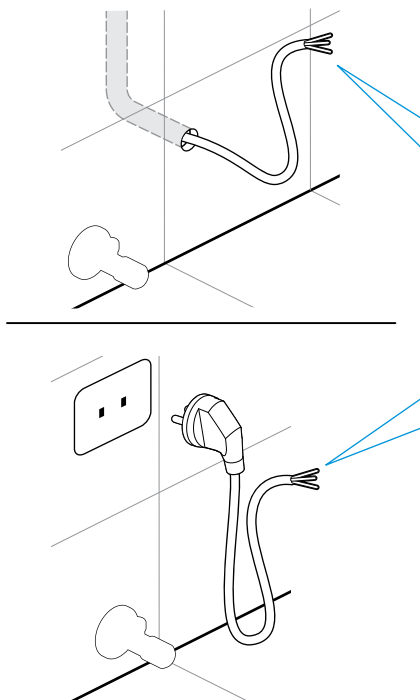


Option **2d**

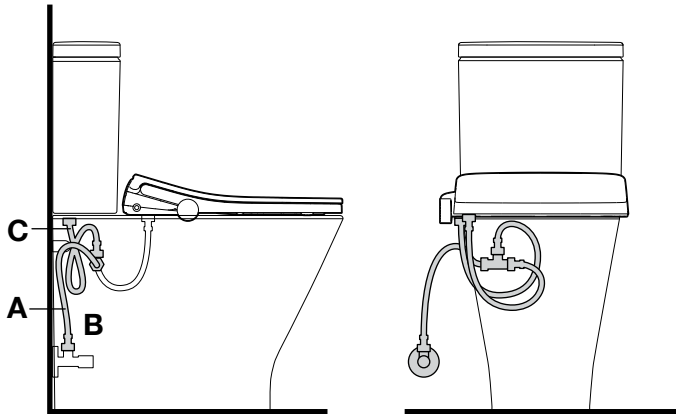




1



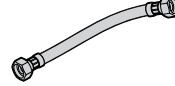
Option 1



Supplied with porcelain

A

G1/2" H - G1/2" H



A80503730R

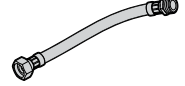
B



HESAS330102

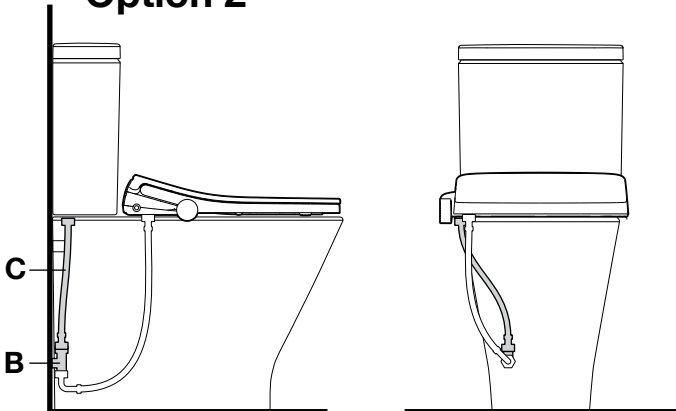
C

G1/2" H - G1/2" M



A80503720R

Option 2



Supplied with porcelain

G1/2" H - G12" H



A80503730R

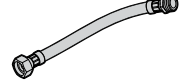
B



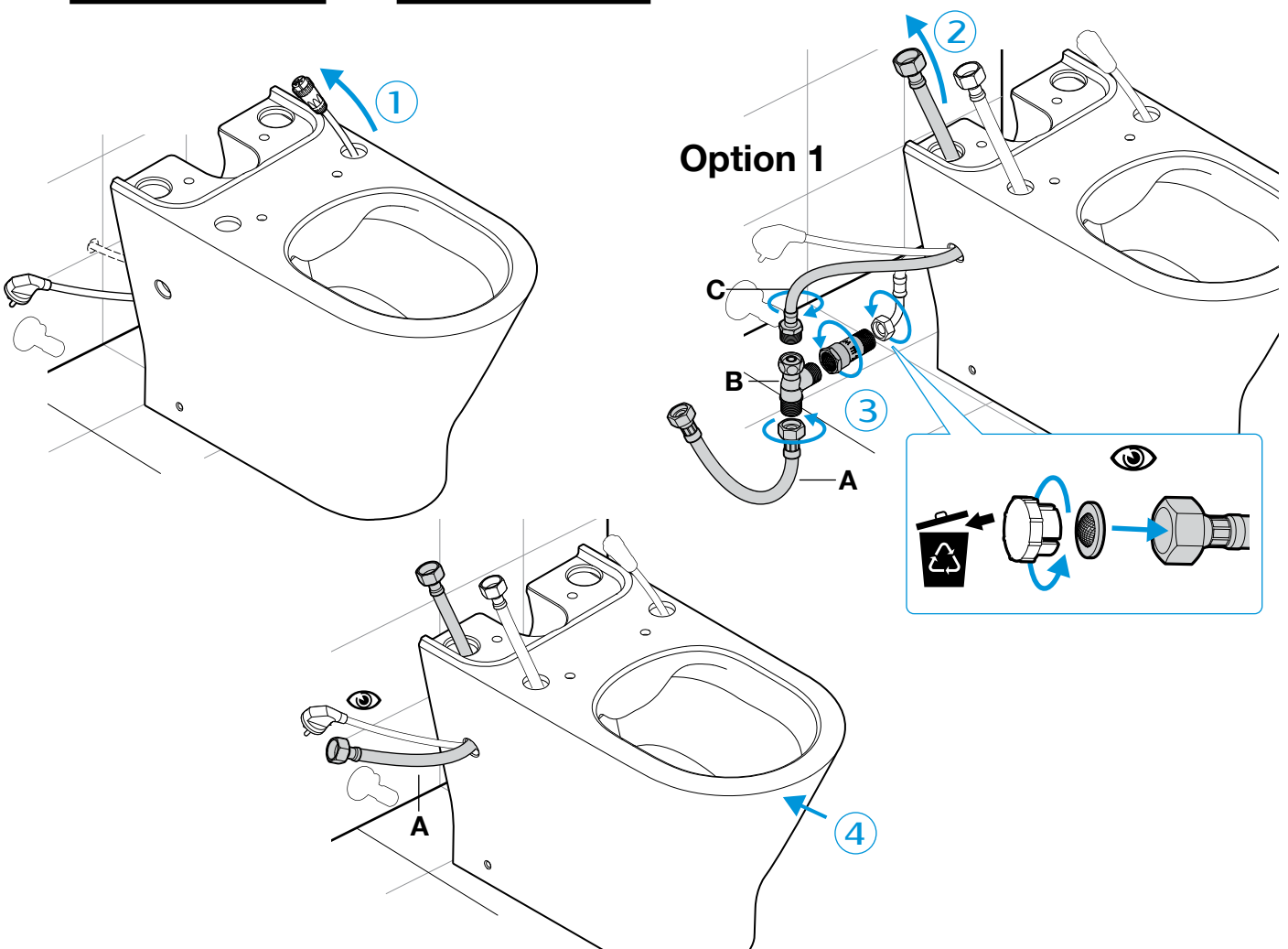
HESAS330102

C

G1/2" H - G1/2" M



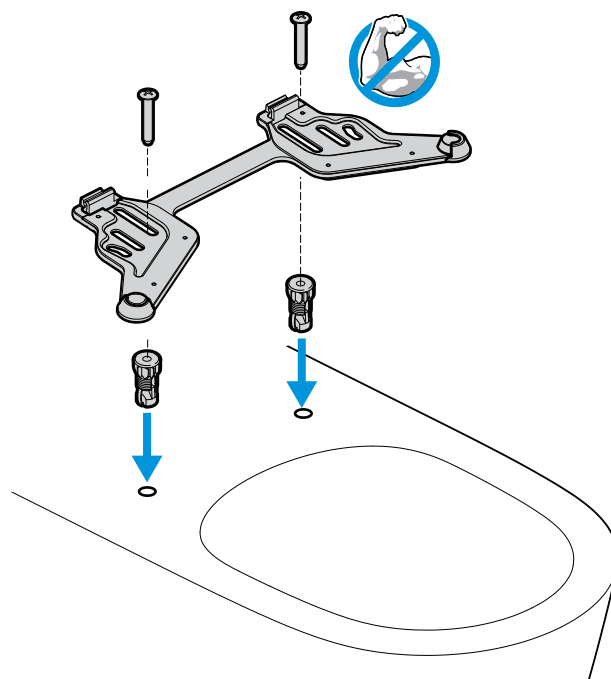
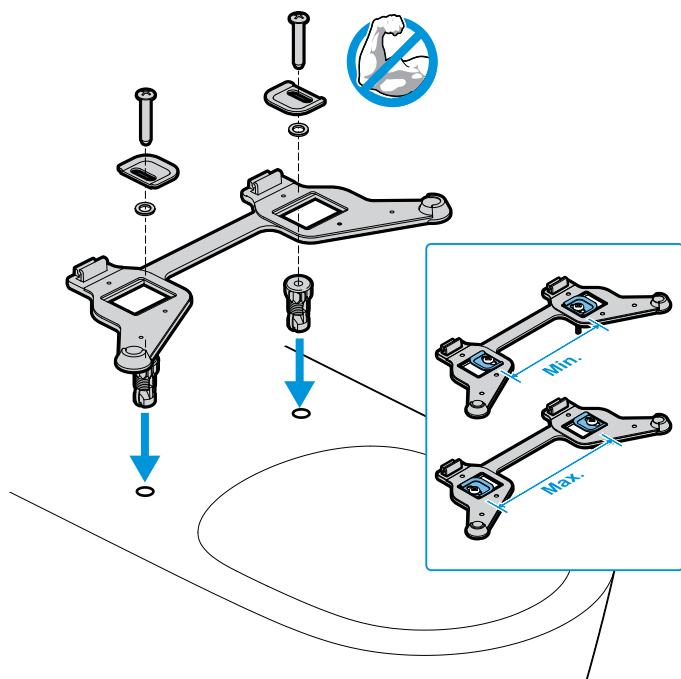
A80503720R



3

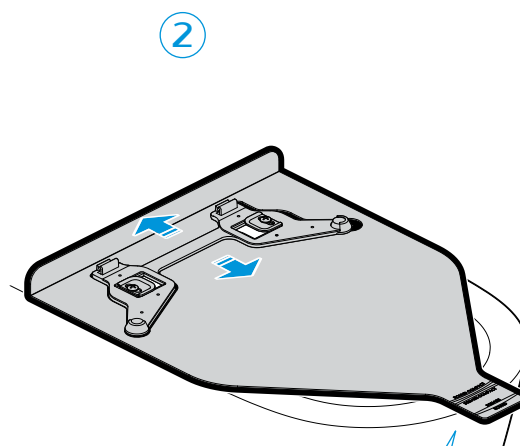
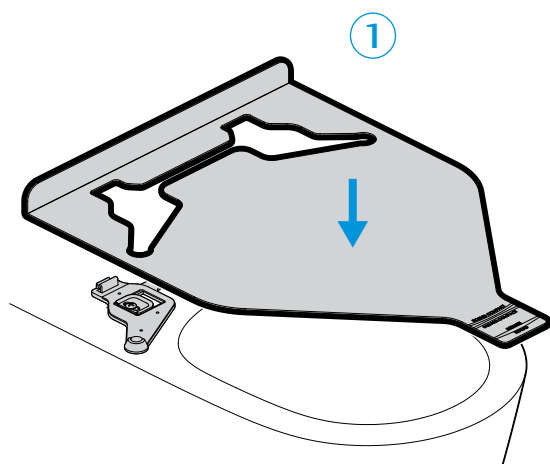
A804053..
A804054..

A804058...



Different position options to fix depending on the porcelain.

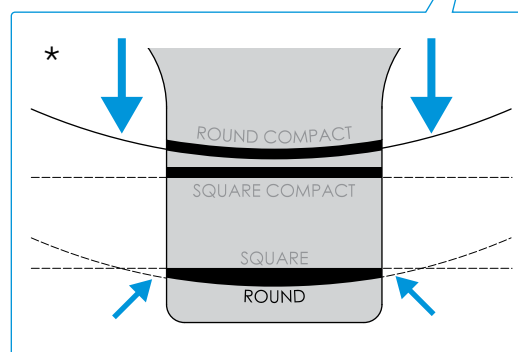
4



Seat template supplied

*

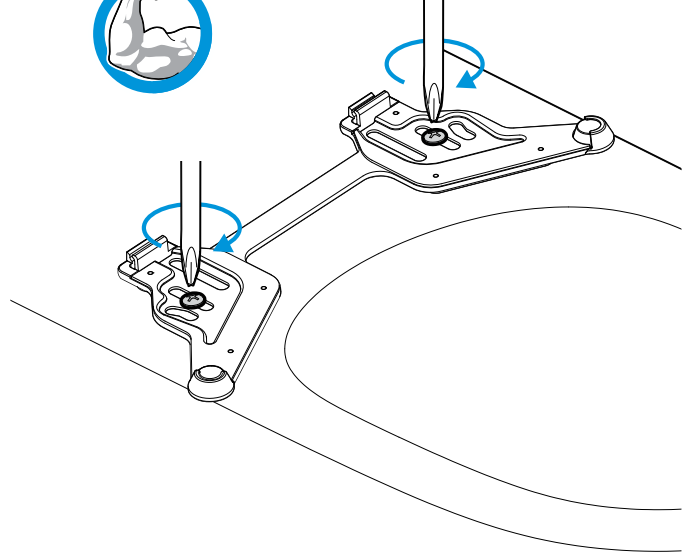
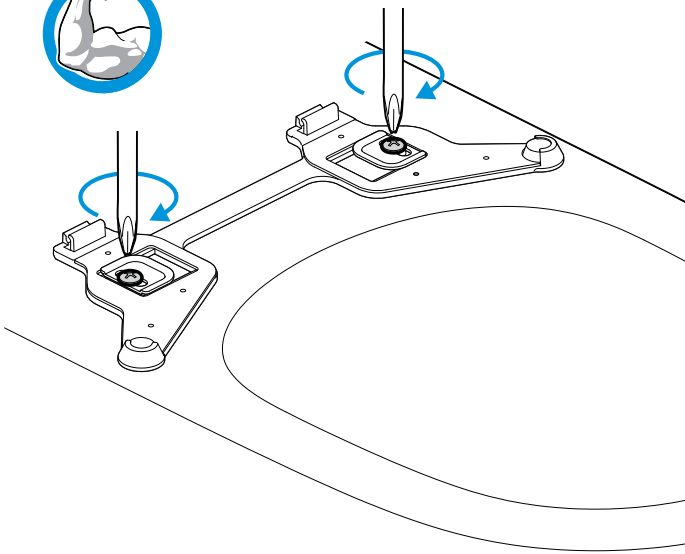
According to model



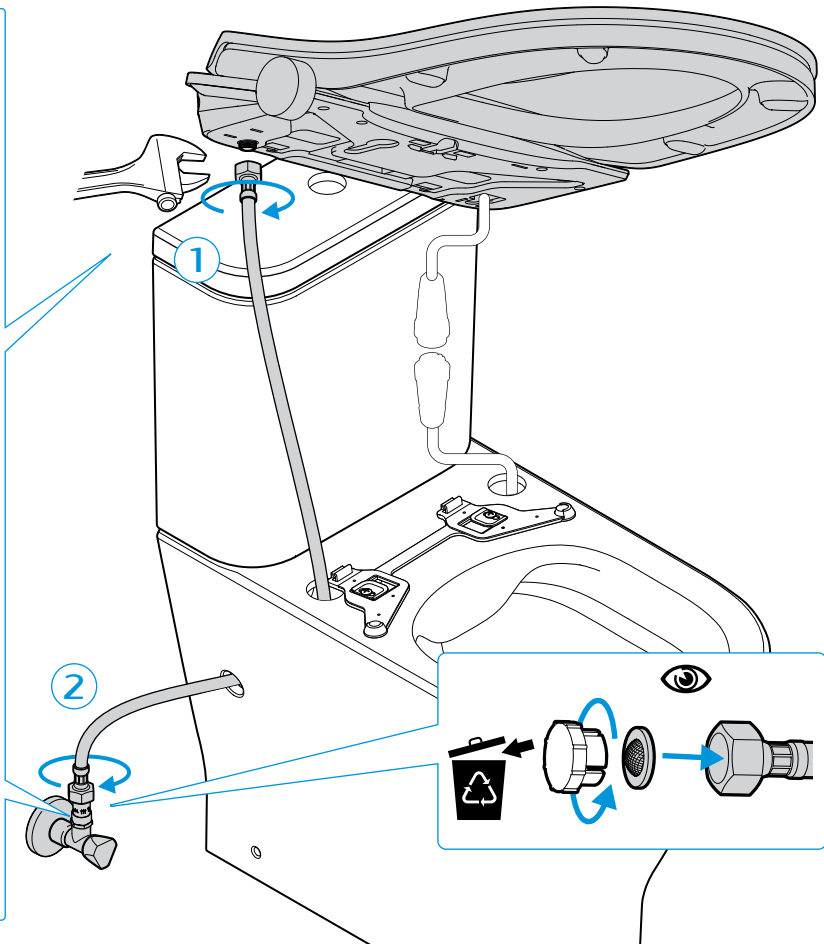
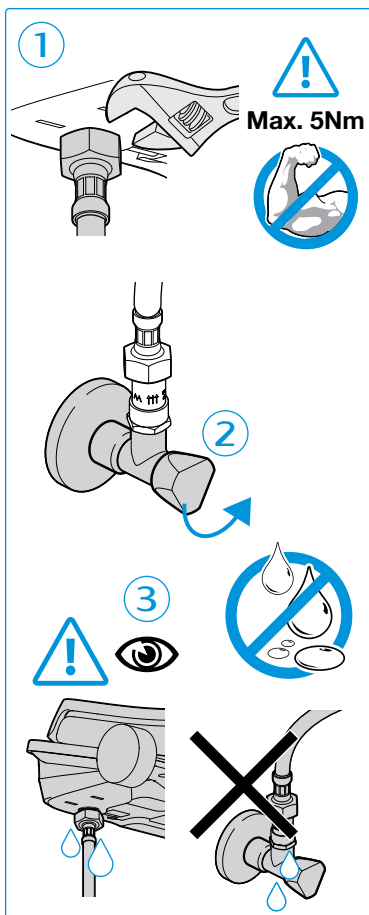
5

A804053..
A804054..

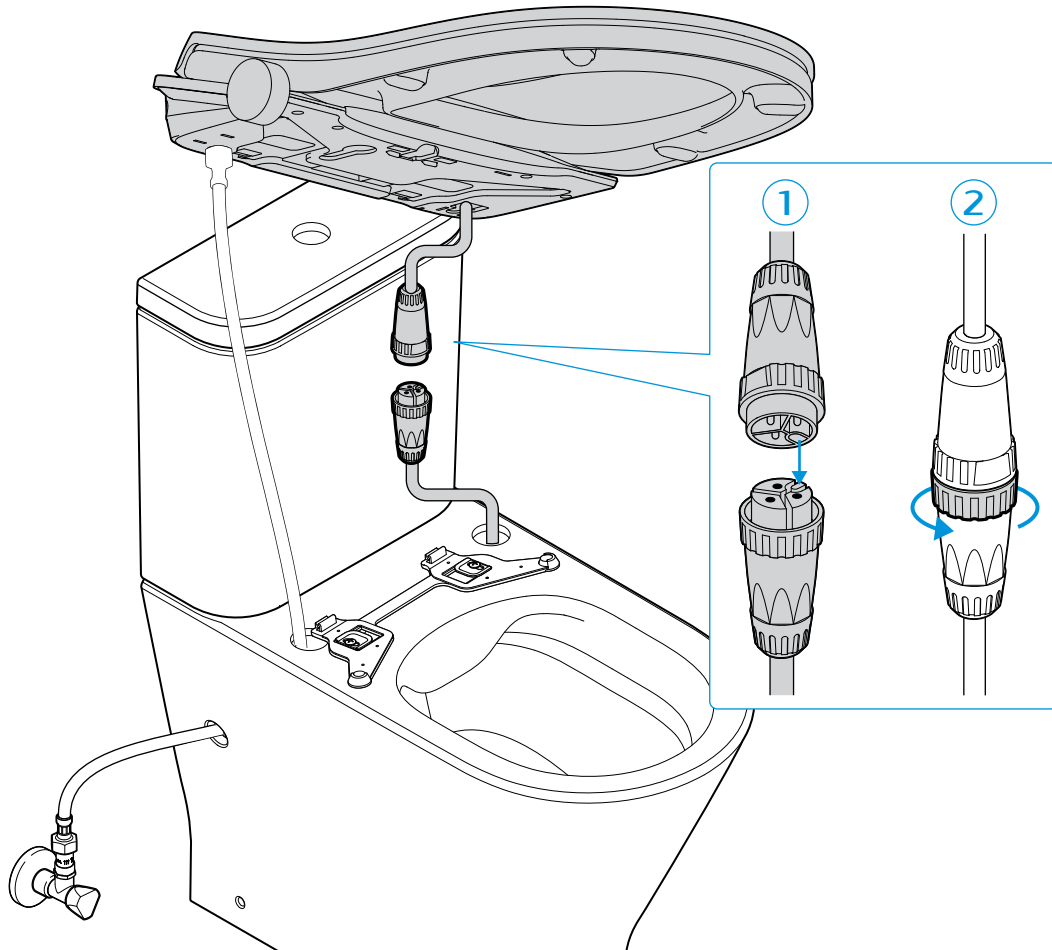
A804058...



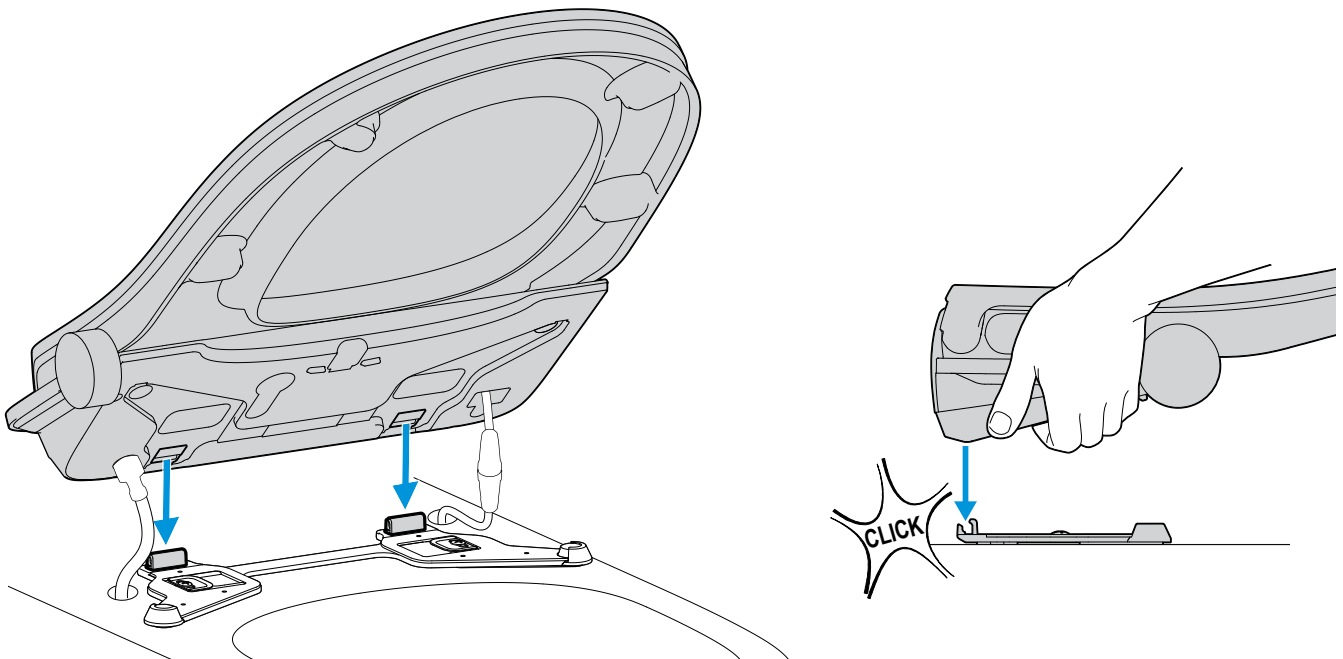
6



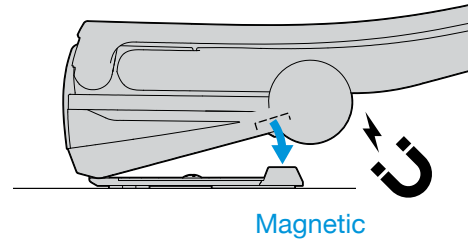
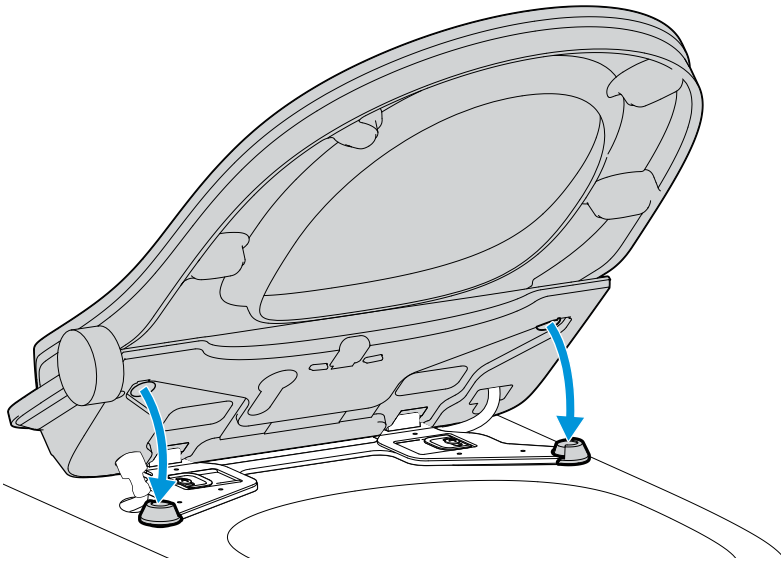
7



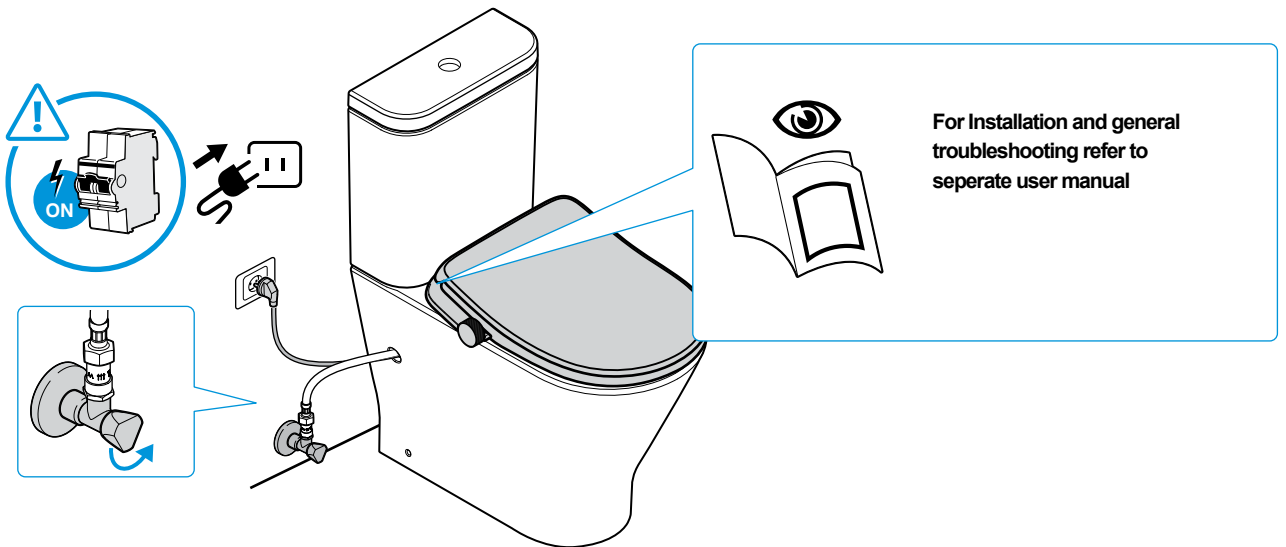
8

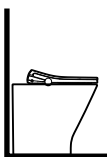


9

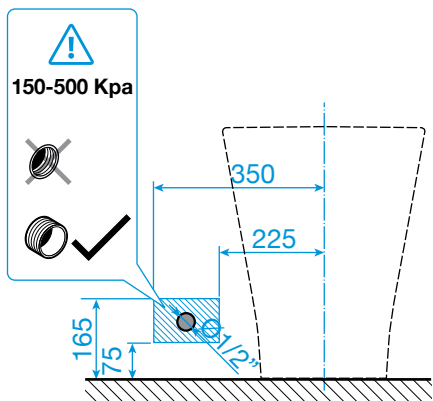


10



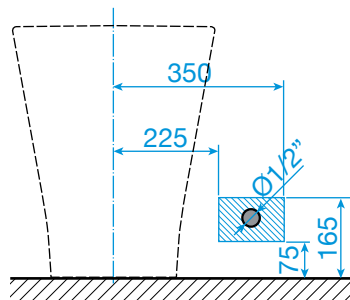


1 Water connection



Option **1a**

Items not supplied with the product.

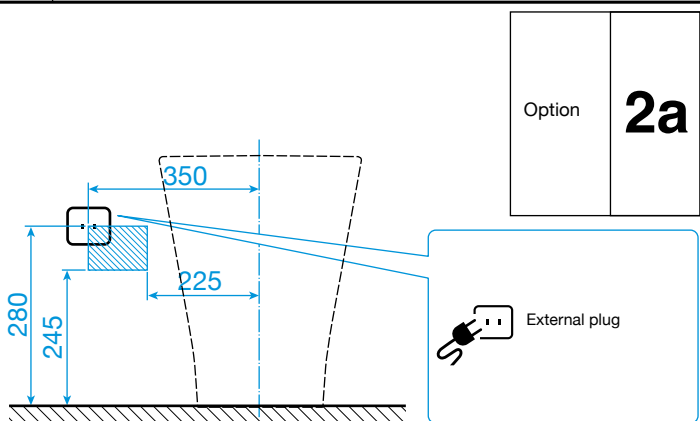


Option **1b**

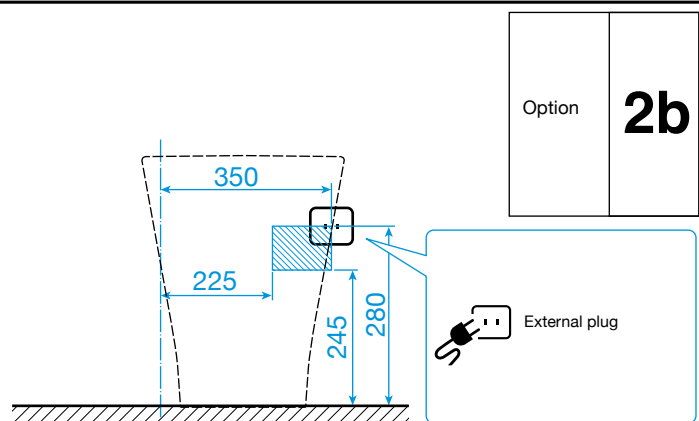
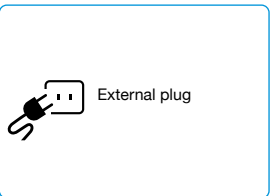
Items not supplied with the product.



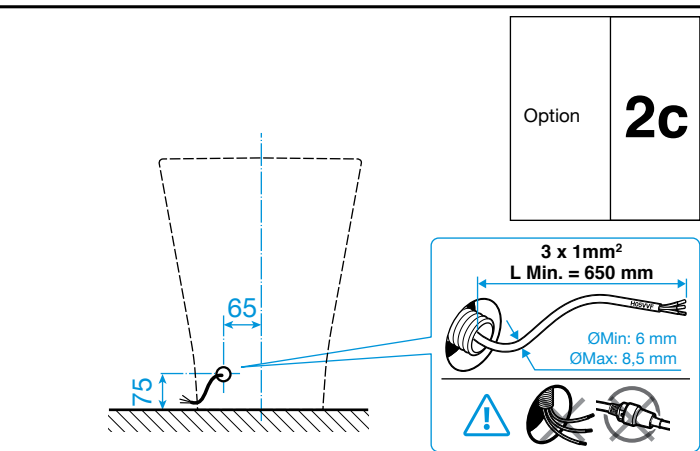
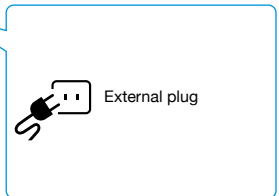
2 Electrical



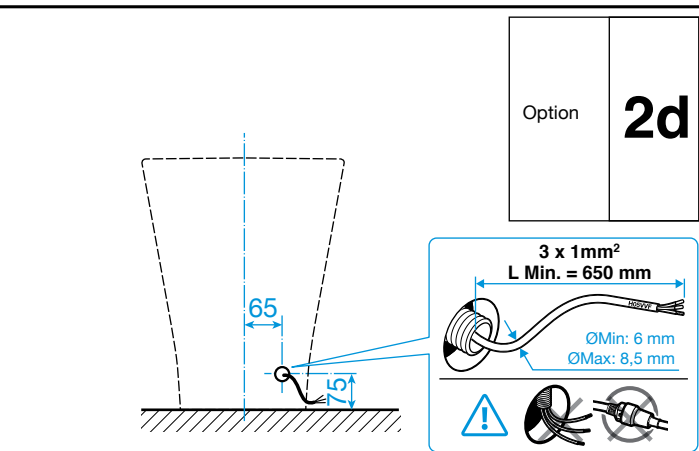
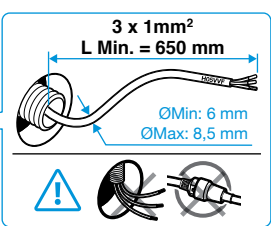
Option **2a**



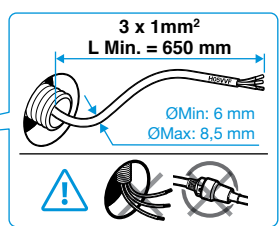
Option **2b**



Option **2c**

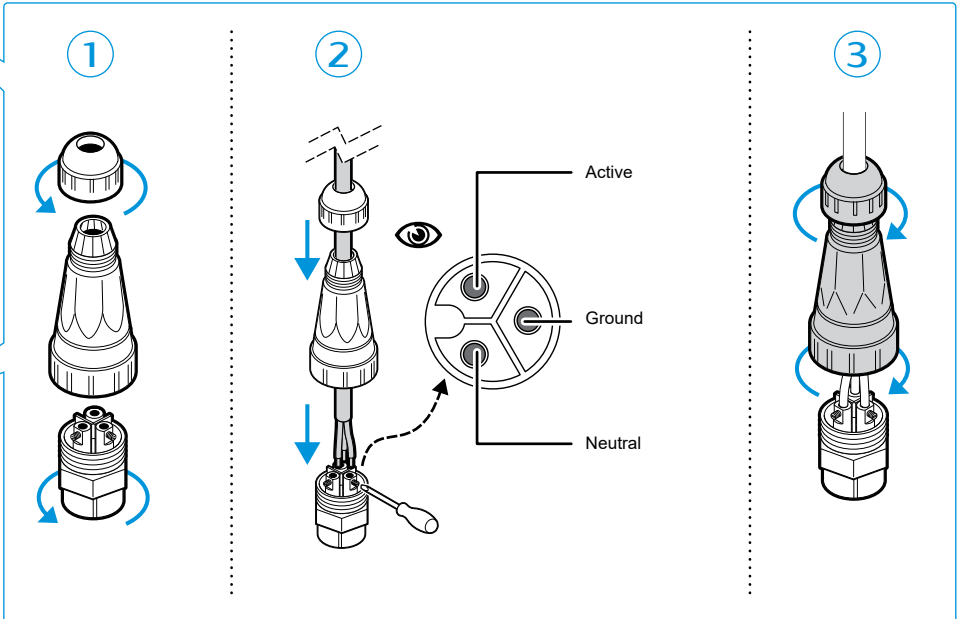
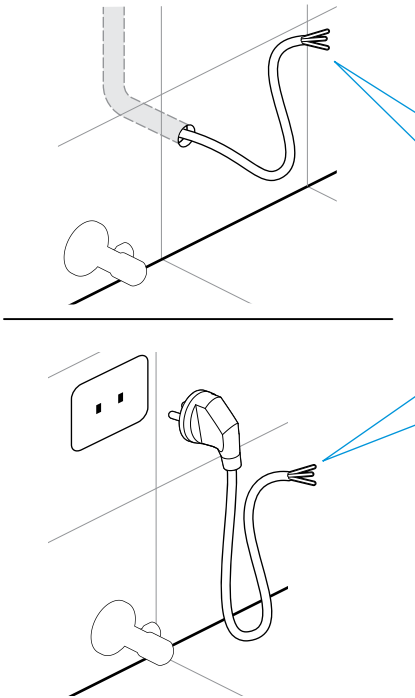


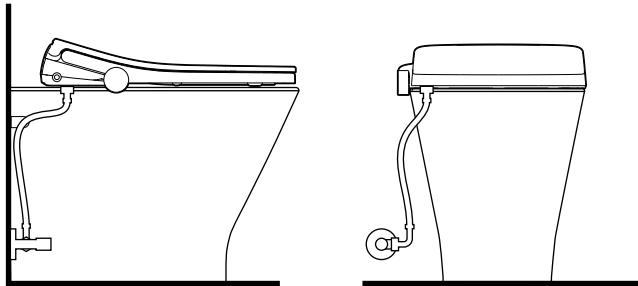
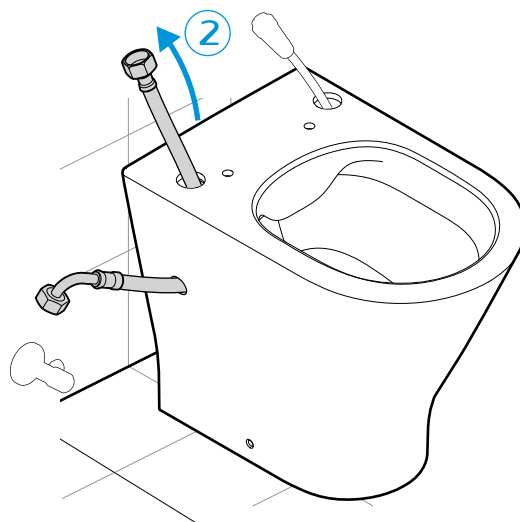
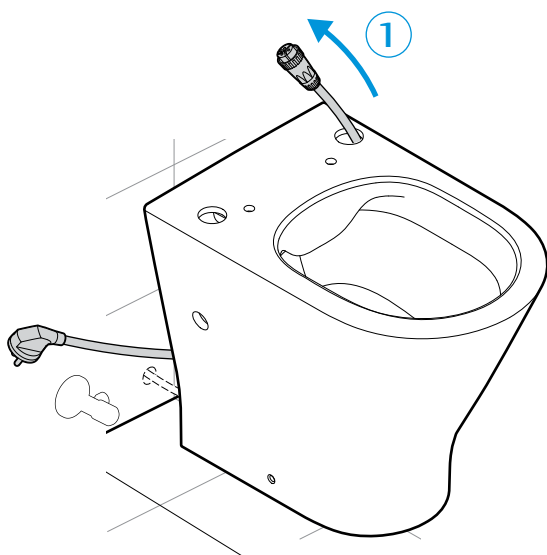
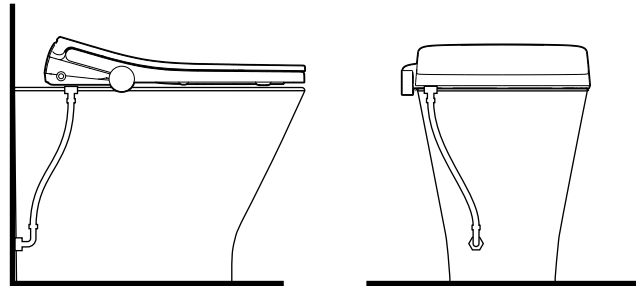
Option **2d**





1

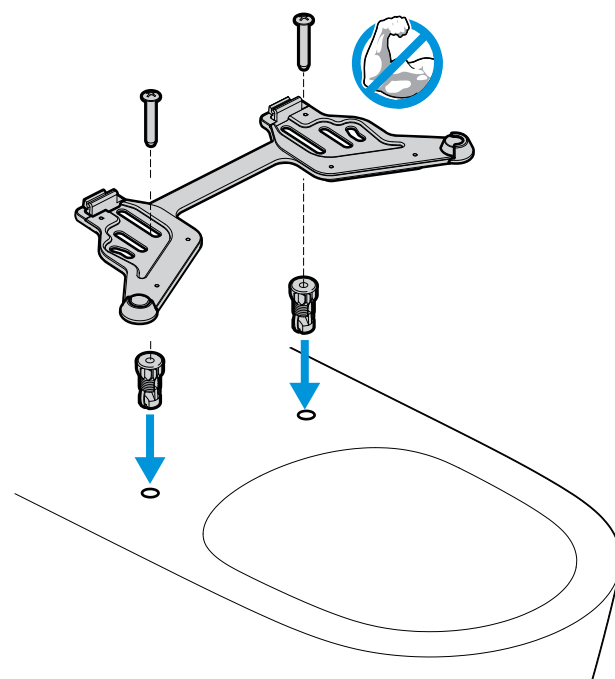
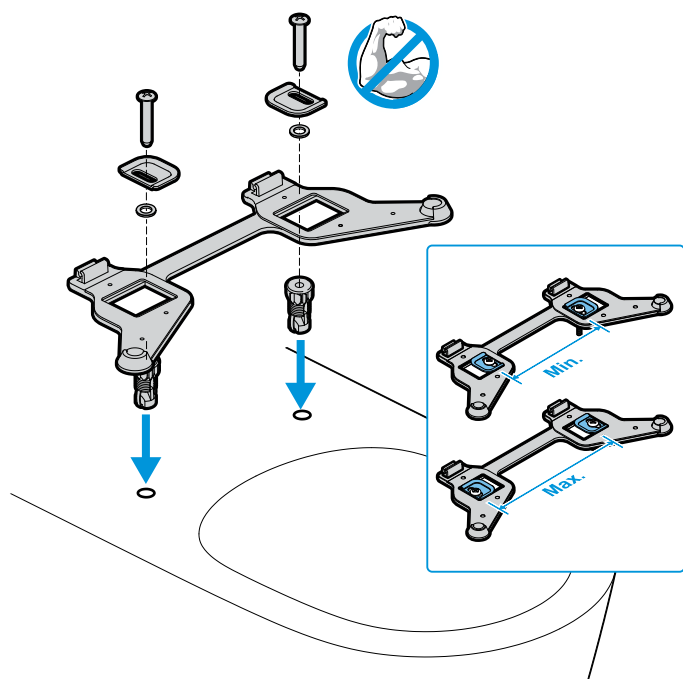


Option 1**Option 2**

3

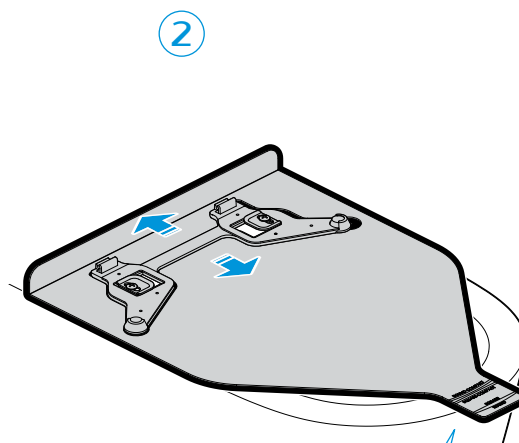
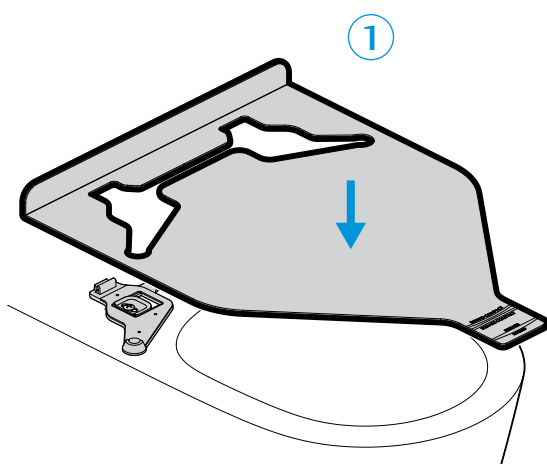
A804053..
A804054..

A804058...



Different position options to fix depending on the porcelain.

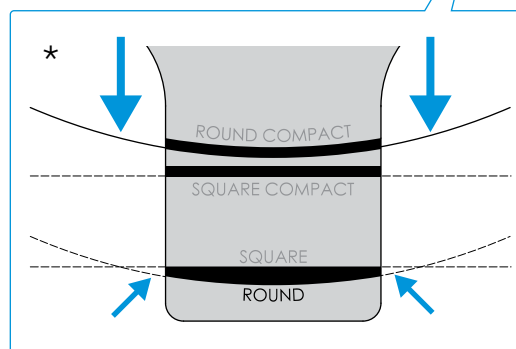
4



Seat template supplied

*

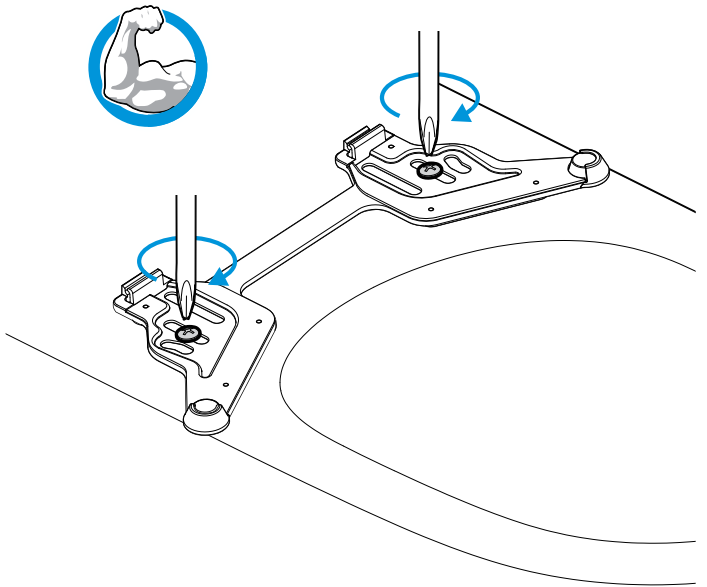
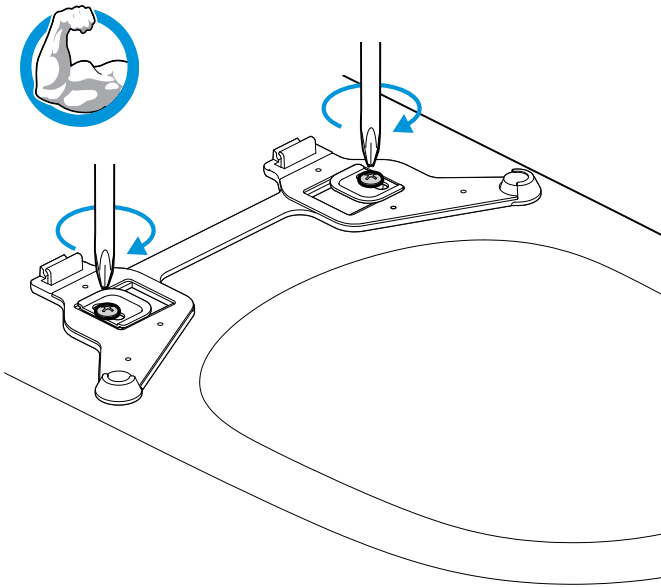
According to model



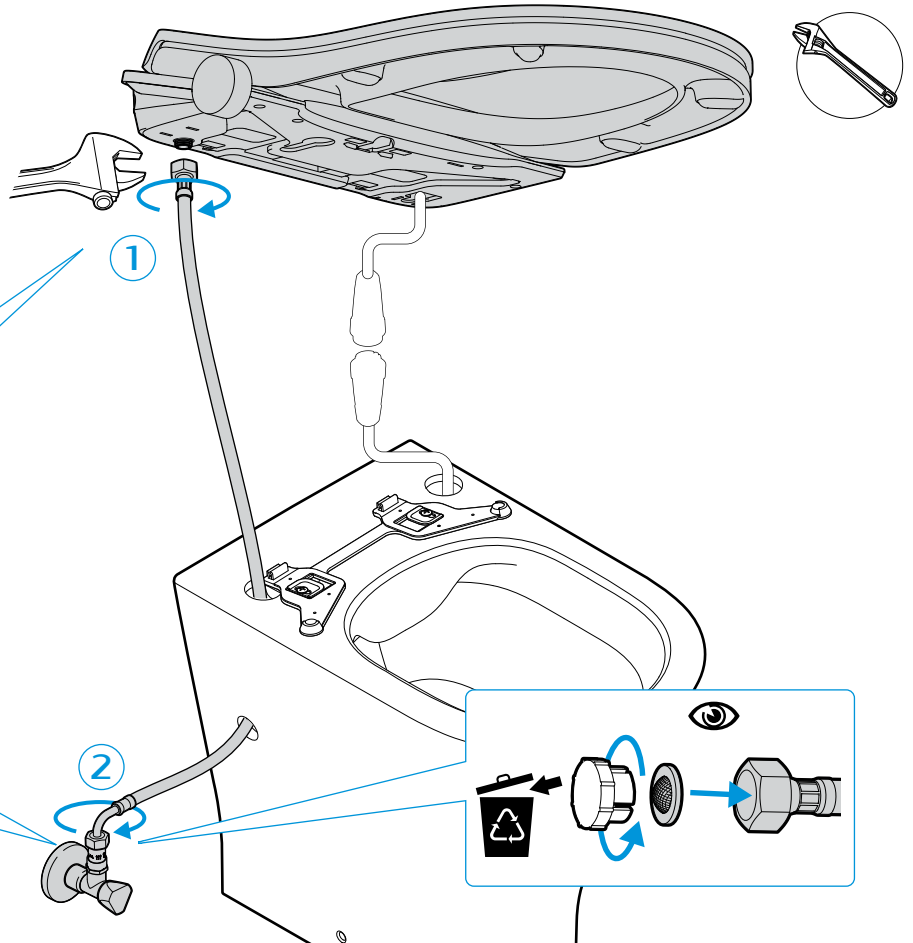
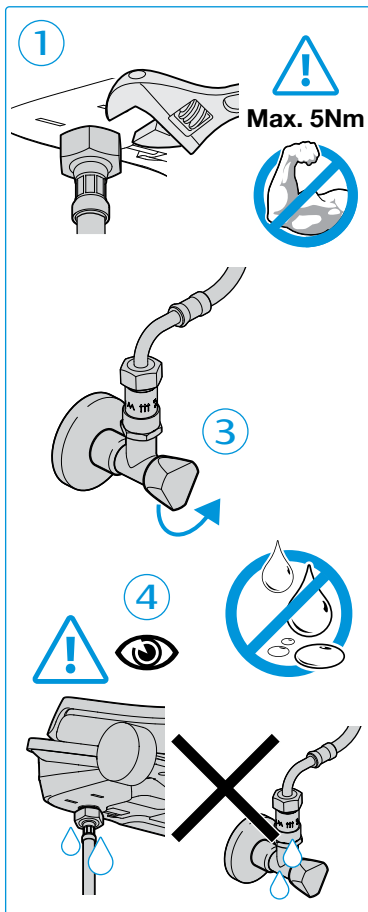
5

A804053..
A804054..

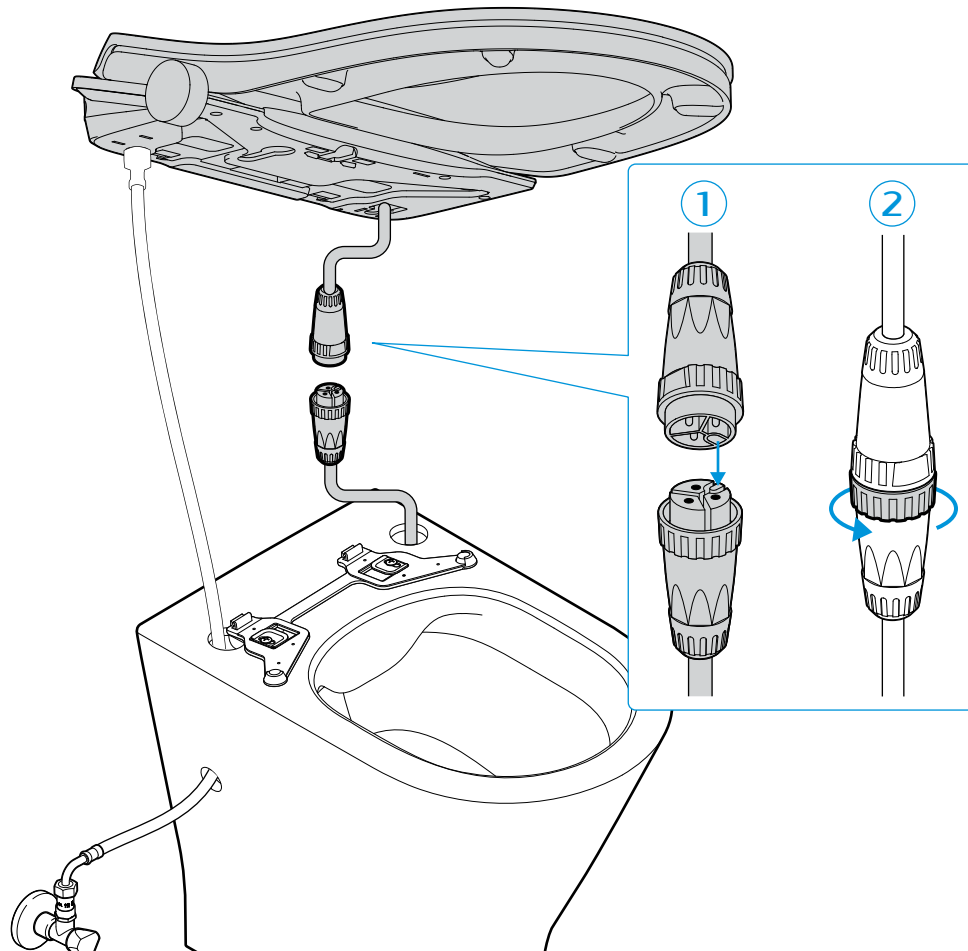
A804058...



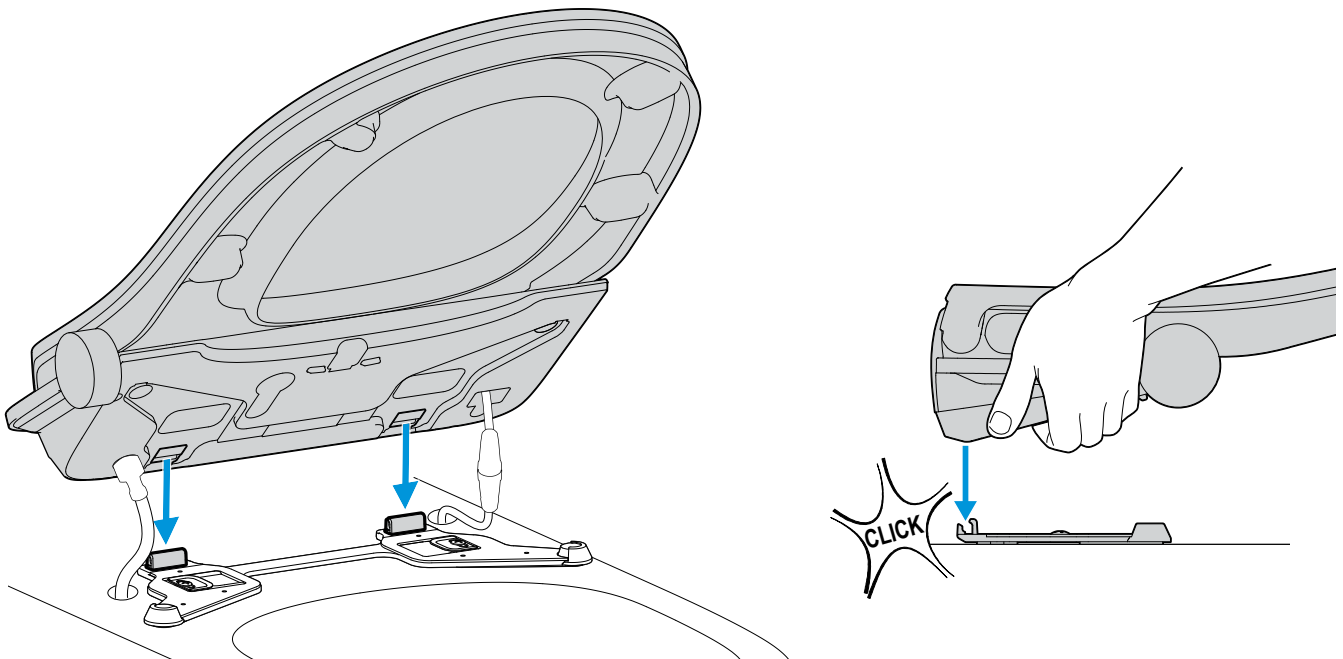
6



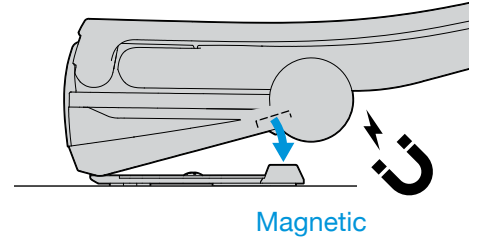
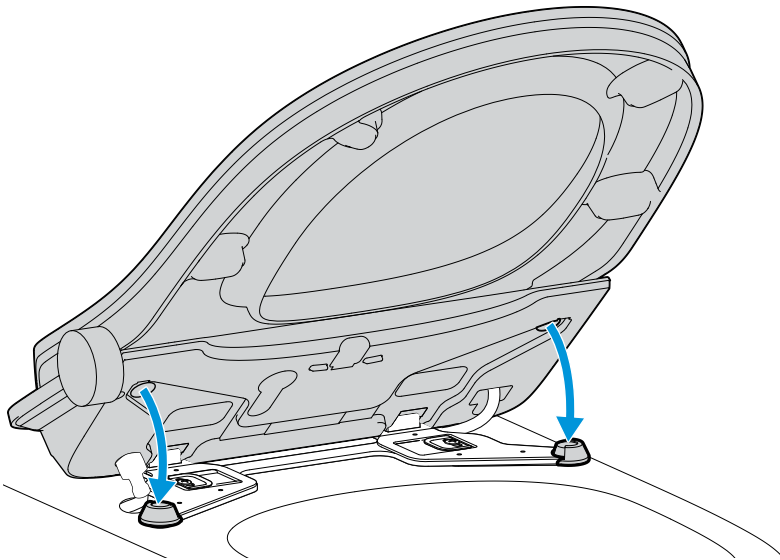
7



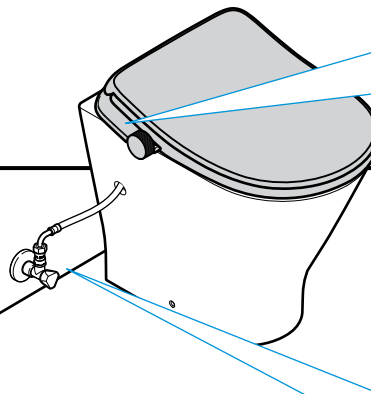
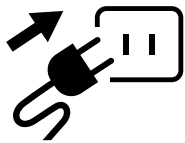
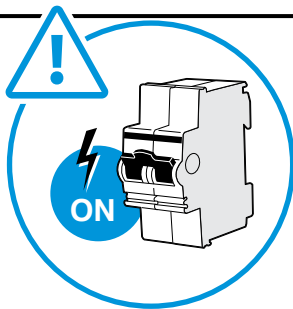
8



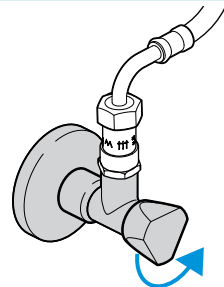
9



10



For Installation and general troubleshooting refer to separate user manual





Roca Sanitario, S.A.
Avda. Diagonal, 513
08029 Barcelona
SPAIN
www.roca.com

**933
661
266** **LÍNEA DE ATENCIÓN
AL CONSUMIDOR
ESPAÑA** 
**SERVICIO TÉCNICO
ESPAÑA** 

