

Posh Solus MK2 Heated Towel Rail

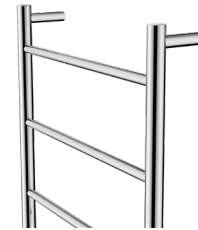
SPECIFICATIONS

Recommended Use	Domestic, Hotel & Commercial
Finish	Polished Stainless Steel Matte Black
Material	Polished Stainless Steel (304)
Options	Plug-in or Hardwired Dress Ring or Non Dress Ring
Heating Method	Dry Element
Power Entry	Bottom Right Leg or Top Left Leg
Voltage	230V AC 50Hz
Wattage	
700 x 500: Polished Stainless Steel	45 watts
700 x 700: Polished Stainless Steel	60 watts
700 x 500: Matte Black	55 watts
700 x 700: Matte Black	75 watts
IP Rating	IP45
Standard	AS/NZ 60335.1 AS/NZS 60335.2.43 EN 55014-1

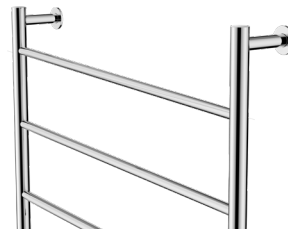
WARRANTY

Warranty - Domestic Use	7 Years
Spare Parts & Labour	12 Months

Please refer to Warranty Page for full Terms and Conditions



Heated Towel Rail: 500mm x 700mm
2007020



Heated Towel Rail: 700mm x 700mm
2007021



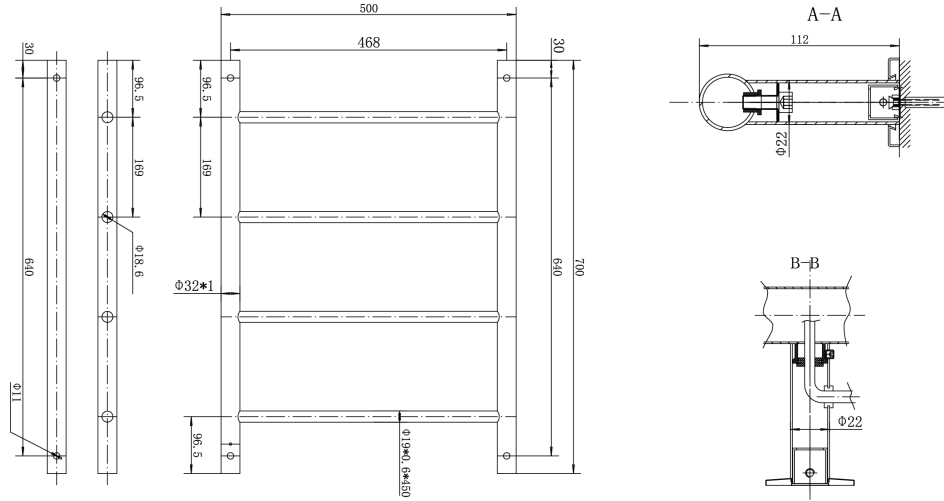
Heated Towel Rail: 500mm x 700mm
2007022



Heated Towel Rail: 700mm x 700mm
2007023

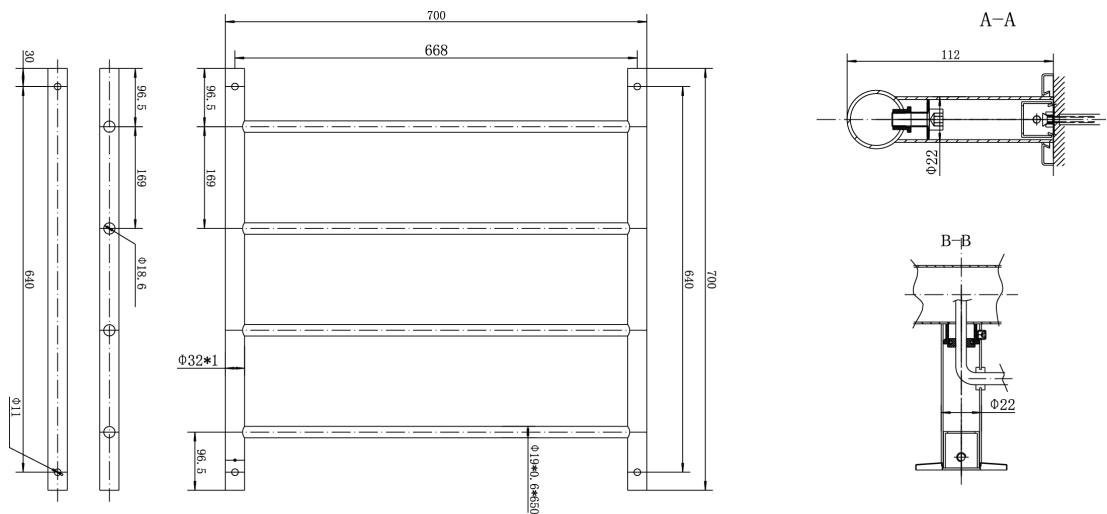


Posh Solus MK2 Heated Towel Rail



2. 4M

Heated Towel Rail 500mm x 700mm



3. 2M

Heated Towel Rail 700mm x 700mm

CLEANING RECOMMENDATIONS

For Stainless Steel:

We recommend the use of soapy water or approved cleaners. This product should not be cleaned with abrasive materials.

For Matte Black:

We recommend the use of a soft dry cloth. This product should not be cleaned with abrasive materials or cleaning agents.

Damage caused by improper treatment is not covered by the product warranty. Refer to Warranty Conditions.

Dimensions are nominal measurements only.

Disclaimer: Products in this specification manual must by regulation be installed by licensed and registered trade people. The manufacturer/distributor reserves the right to vary specifications or delete models from their range without prior notification. Dimensions are nominal measurements only. Dimensions and set-outs listed are correct at time of publication however the manufacturer/distributor takes no responsibility for printing errors.

Published 13/07/2022