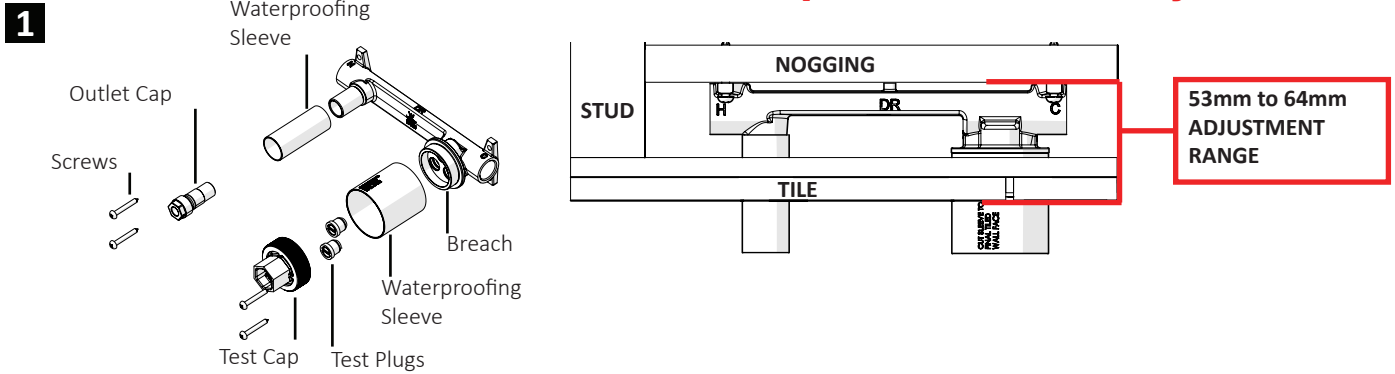
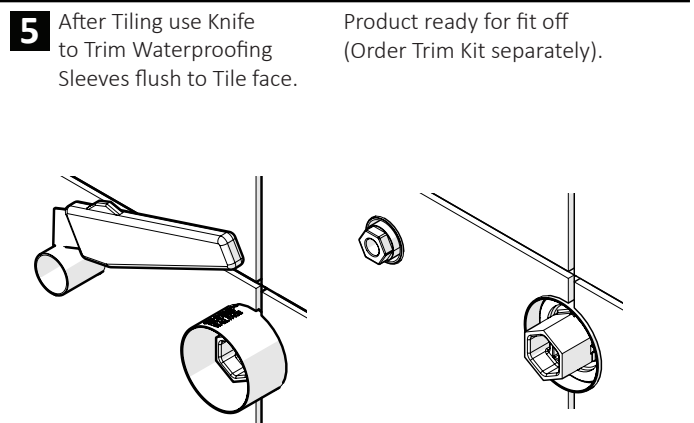
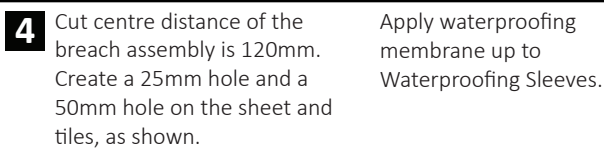
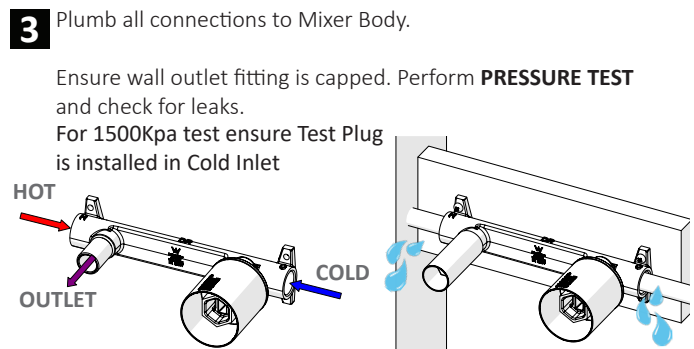
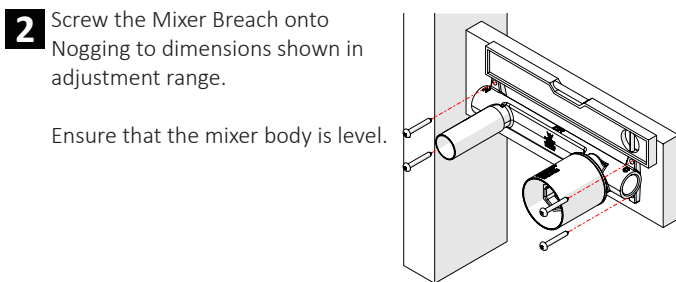




Milli Etch Wall Mixer Tap Set Inwall Body

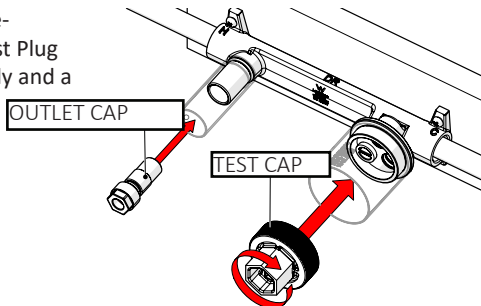


Product complies with the Lead-free requirements of the national construction code volume 3



FOR STANDARD PRESSURE TESTING Up To 500Kpa

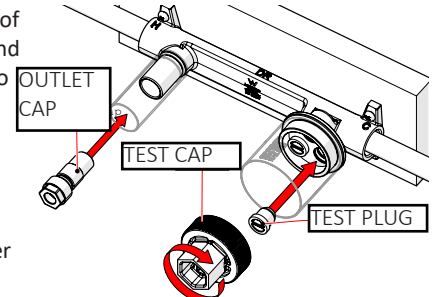
Product comes pre-installed with a Test Plug in the Hot Inlet only and a Test Cap.



FOR HIGH PRESSURE TESTING 500-1500Kpa

For high pressure testing of pipes, remove Test Cap and add another Test Plug into the Cold Inlet. Re-attach Test Cap. **Hand Tighten + 120° OR 10 N m.**

Perform high pressure test for 30 minutes. As per AS3500.1



Care Details

We recommend the use of soapy water or approved cleaners. This product should not be cleaned with abrasive materials. Damage caused by any improper treatment is not covered by the product warranty. Refer to Warranty Conditions

Installation should comply with Australian standard AS3500.1 or relevant local authority requirements. Showers may not be suitable for use within:

- Gravity-fed water systems
- Some instantaneous hot water systems

Any flow controller incorporated in the outlet to be tightened to prevent removal by hand. As Per AS3718

Plumbers, please ensure a copy of the installation instruction is left with the end user for future reference.

