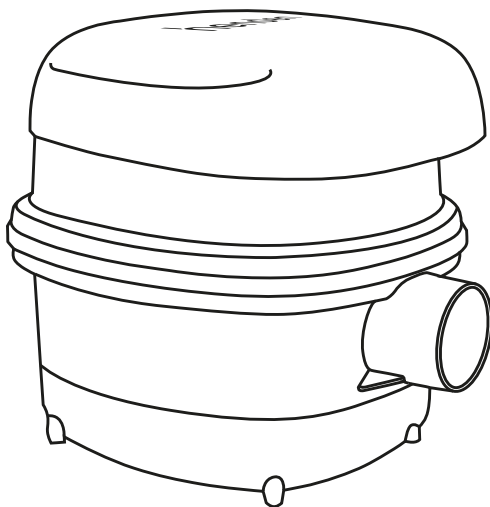


# henden™

---

## Spa Blower

# INSTALLATION & OWNER'S MANUAL



**IMPORTANT**  
Please read carefully



#### CAUTIONS AND WARNINGS:

Henden advises the use of a quality one-way valve for all installations and an earth leakage protection system for electrical safety.

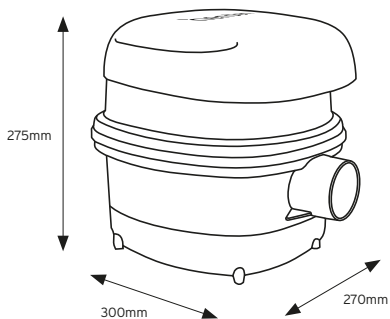
Do not create multiple highpoints in the pipework as this may create airlocks. This will greatly restrict performance and damage may result.

Installation must be handled by a professional pool builder/service agent.

## SPECIFICATIONS

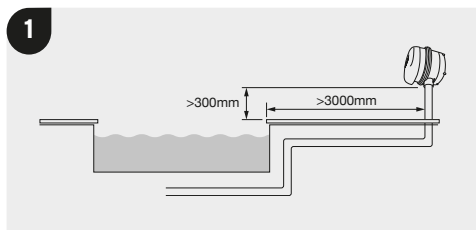
SPECIFICATIONS	
Fan	Two stage
Speed	Single speed
R.P.M.	29,000
Input	240 VAC 50/60 Hz
Power	1100 Watt
Current	7 Amp
Airflow	3,078 LPM
Air Supply	Through-flow discharge
kPa	28kPa
IP Rating	23

## DIMENSIONS

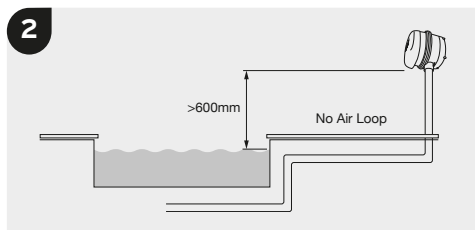


## PREPARING FOR INSTALLATION

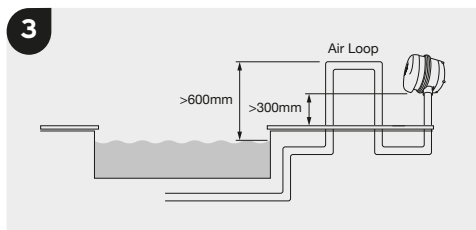
Position the Henden Spa Blower 3 meters from the pool or spa and at least 300mm above ground level.



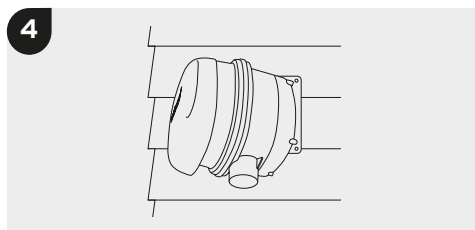
Ensure the Henden Spa Blower is positioned 600mm above water level.



Note: if the Henden Spa Blower is positioned less than 600mm above water level, an air loop of at least 600mm above water is required.



If positioned on wall, use supplied wall bracket to securely mount the Henden Spa Blower to wall.

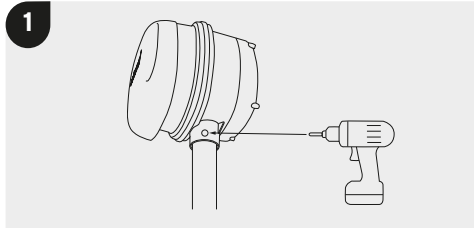


## INSTALLATION

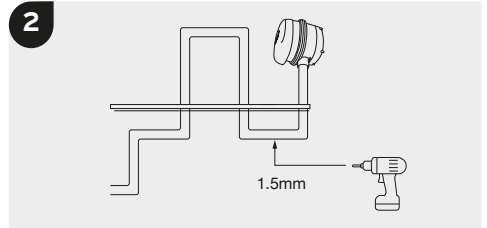
---

To install the Henden Spa Blower, follow the steps below.

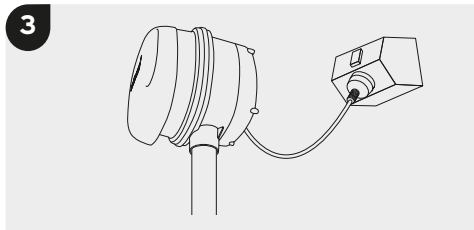
Insert a 50mm PN9 or higher PVC pipe and use the provided screw to secure to the Henden Spa Blower. Do not glue Henden Spa Blower to the pipework.



If an air loop is required, create a 1.5mm hole in the low point between the blower and loop, to clear condensation.



Connect the Spa Blower to a power outlet and power on to confirm adequate air supply to outlets.



The Henden Spa Blower is now installed and will operate on power supply.



## WARRANTY

---

### HENDEN™ REPAIR OR REPLACEMENT GUARANTEE

Our goods come with guarantees that cannot be excluded under the Australian Consumer Law. You are entitled to a replacement or refund for a major failure and compensation for any other reasonably foreseeable loss or damage. You are also entitled to have the goods repaired or replaced if the goods fail to be of acceptable quality and the failure does not amount to a major failure. Should you experience any difficulties with your Henden product, we suggest in the first instance that you contact the installer of the product or your local Reece Irrigation & Pools branch. Alternatively, you can phone Henden. On receipt of your claim, Henden will seek to resolve your difficulties if the product is faulty or defective, advise you on how to have your Henden product repaired, obtain a replacement or a refund. Henden does not cover normal wear or tear, or damage resulting from misuse or negligent handling, improper use for which the product was not designed or advertised, failure to properly follow the provided installation and operating instructions, failure to carry out maintenance, corrosive or abrasive water or other liquid, lightning or high voltage spikes, or unauthorized persons attempting repairs. Where applicable, your Henden product must only be connected to the voltage shown on the nameplate. Henden does not cover freight, or any other costs incurred in making a claim. Please retain your receipt as proof of purchase; you **MUST** provide evidence of the date of original purchase when making a claim. Henden shall not be liable for any loss of profits or any consequential, indirect, or special loss, damage or injury of any kind whatsoever arising directly or indirectly from Henden products. Should your Henden product require repair or service after the guarantee period contact your nearest Reece Irrigation & Pools branch or phone the number below.

For a complete list of Reece Irrigation & Pools branches visit our website [reece.com.au/storefinder](http://reece.com.au/storefinder) or contact:

**Technical and After Sales Support:**

1300 HENDEN (1300 436 336)

**Mailing/Manufacturer Address:**

Spa King Blower Co  
262 Bowhill Road  
Willawong, QLD 4110

