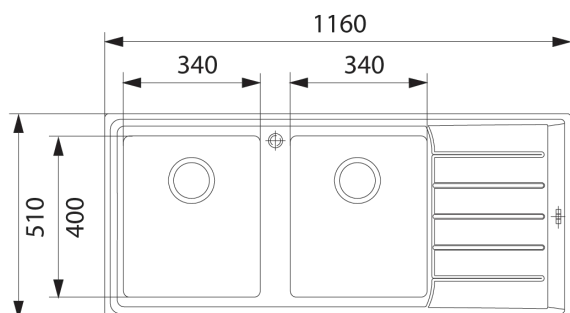


FRANKE

NEPTUNE PLUS INSET SINK - NPX 621



FEATURES

Model	NPX 621 LHD or NPX 621 RHD
Bowl configuration	Sink is available with either left hand drainer or right hand drainer.
Bowls	Fabricated bowls with R15 corners and rear wastes
Finish	Satin
Fixing	Integrated sealing strip and clipping system

SPECIFICATIONS

Recommended use	Domestic
Material	Type 304, 18/10 stainless steel, 1.0mm thick
Formation	Welded, two pieces
Tap Holes	1 tap hole only, Ø35mm
Dimensions	1160 x 510mm
Bowl Size	340 x 400 x 220mm (x2) / 27 Litres capacity
Cut Out	1140 x 490mm, cr = 20mm
Cabinet Size	800mm
Waste Outlet	90mm
Features	Sound deadening pads, overflow
Accessories	Franke rollamat, chopping board and strainer tray available as optional accessories
Models available	NPX 611 Single bowl and drainer 860mm NPX 620 Double bowl 860mm NPX 621 Double bowl and drainer 1160 mm

To see the complete Franke range go to www.reece.com.au/bathrooms

CLEANING RECOMMENDATIONS

This kitchen product should not be cleaned with abrasive materials eg. steel wool/scourers. Do not use any corrosive or abrasive cleaning agents containing acids or scouring agents. Bleaches can also discolour products and therefore should not be used. Damage caused by any improper treatment is not covered by the product warranty- refer to Warranty Conditions.

Disclaimer: Products in this specification manual must by regulation be installed by licensed and registered trade people. The manufacturer/distributor reserves the right to vary specifications or delete models from their range without prior notification. Dimensions are nominal measurements only. Dimensions and set-outs listed are correct at time of publication however the manufacturer/distributor takes no responsibility for printing errors.

Tech Page Version 1

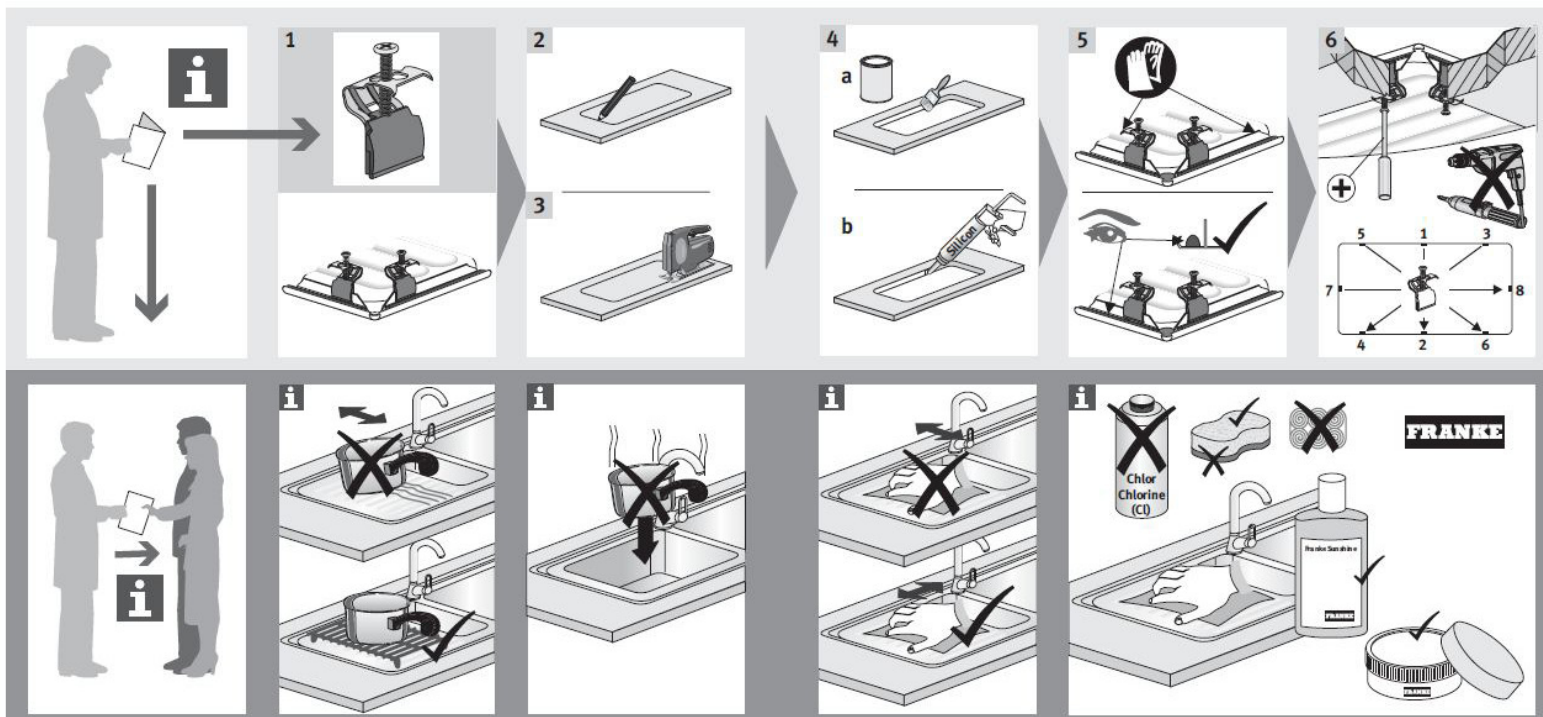
FRANKE

reece

FRANKE

NEPTUNE PLUS INSET SINKS - NPX 621

INSTALLATION INSTRUCTIONS



Plumbers, please ensure a copy of the installation instructions is left with the end user for future reference

