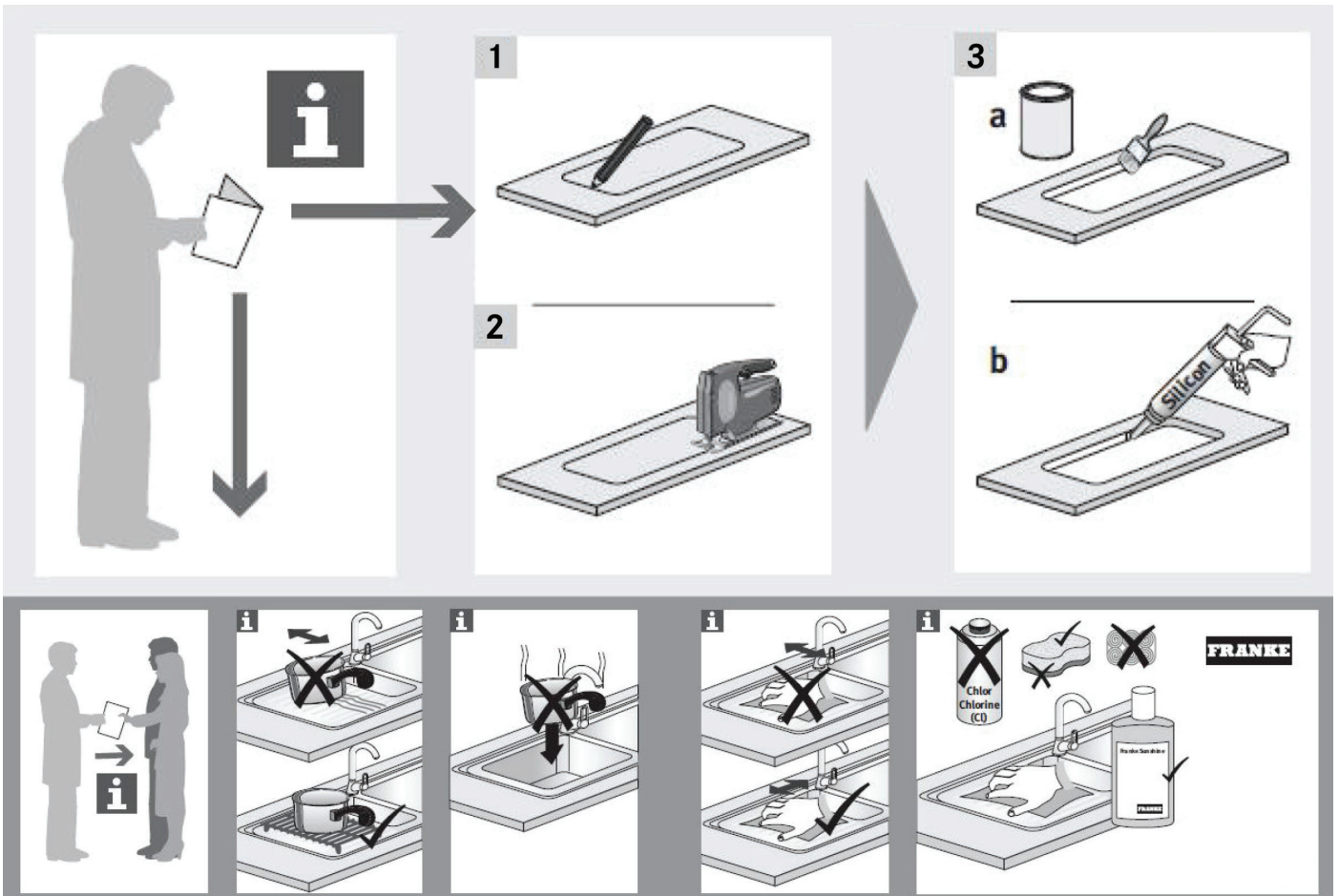




Franke Bow Prep Centre Flushmount Double Bowl Sink Stainless Steel BWX220-41/27

Installation Instructions - Topmount



Dimensions are nominal measurements only.

Disclaimer: Products in this specification manual must by regulation be installed by licensed and registered trade people. The manufacturer/distributor reserves the right to vary specifications or delete models from their range without prior notification. Dimensions are nominal measurements only. Dimensions and set-outs listed are correct at time of publication however the manufacturer/distributor takes no responsibility for printing errors.

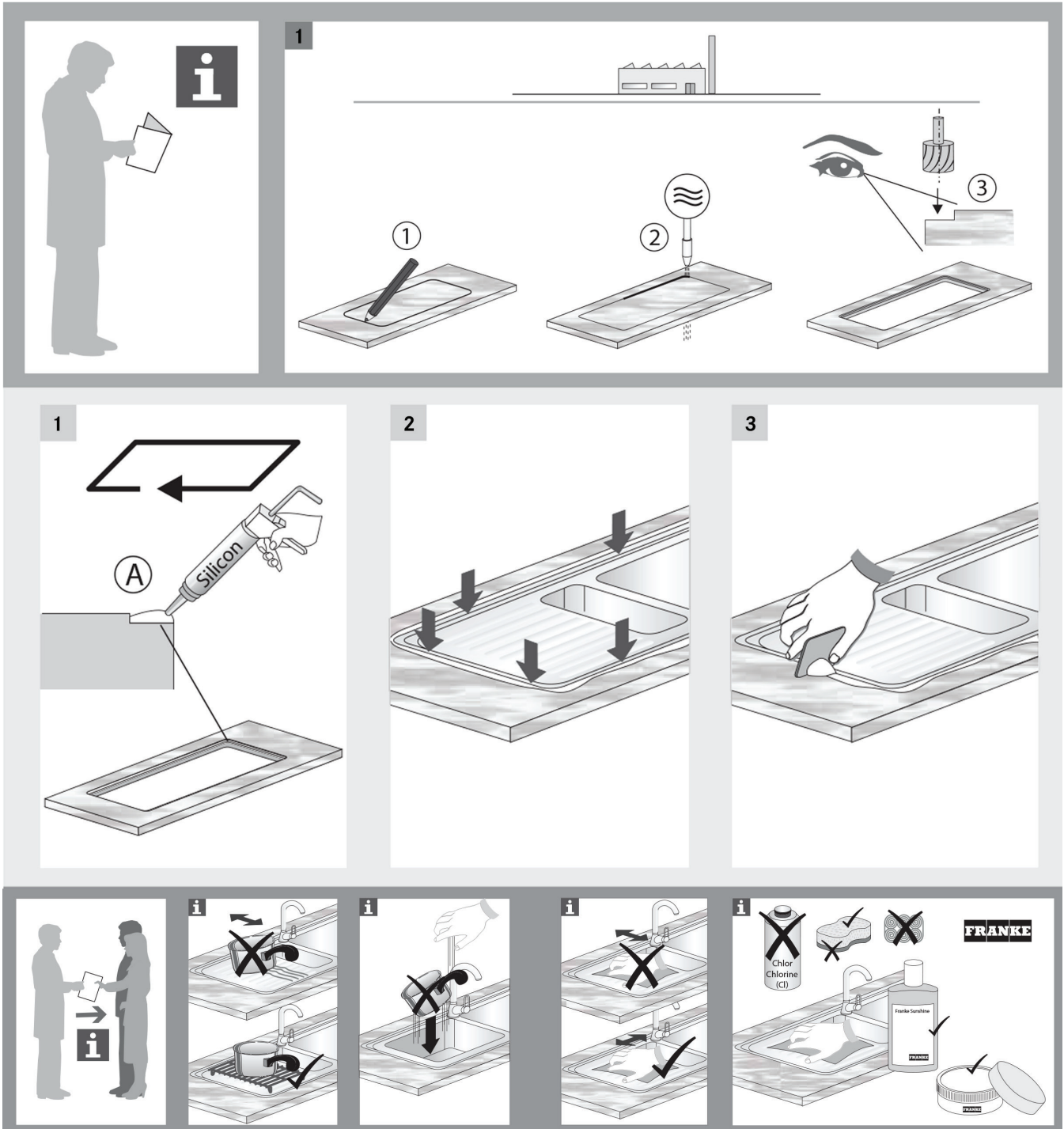
Published 21/09/2020





Franke Bow Prep Centre Flushmount Double Bowl Sink Stainless Steel BWX220-41/27

Installation Instructions - Flushmount



Dimensions are nominal measurements only.

Disclaimer: Products in this specification manual must by regulation be installed by licensed and registered trade people. The manufacturer/distributor reserves the right to vary specifications or delete models from their range without prior notification. Dimensions are nominal measurements only. Dimensions and set-outs listed are correct at time of publication however the manufacturer/distributor takes no responsibility for printing errors.

Published 21/09/2020



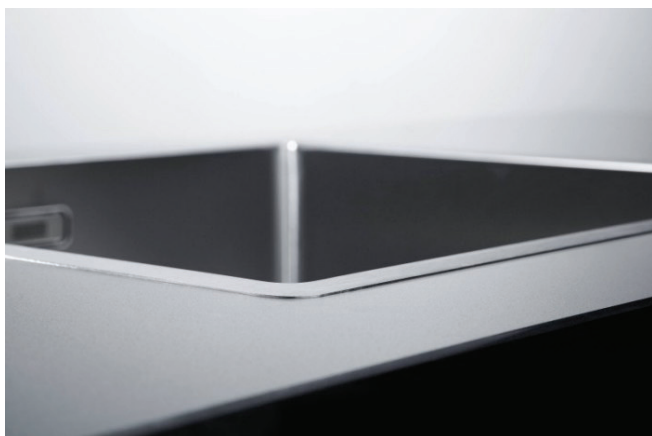
THE SLIMFIX® REVOLUTIONARY FIXING SYSTEM

Premium design and simple installation - thats a Franke Slimfix® sink

The Slimfix® revolutionary fixing system, anchors the sink firmly to the work surface without the need for clamps, fixing rails or screws.

Slimfix®

The unique fixing system has the added advantage of making the installer's job far simpler; no under-sink fitting is required - the sink is simply dropped into the prepared cut-out and the unique one-way gripping anchors under the rim fix the sink firmly in place.



Slimfix® technology

From a visual perspective, the Slimfix® technology has enabled the Franke designers to radically reduce the width, depth and profile of the outer rim, resulting in a sink which is virtually flush with the worktop and which has a bowl and drainer which are deeper and more three-dimensional in appearance. In this way, the user will wash in the sink and not on it.

MAKE IT WONDERFUL

