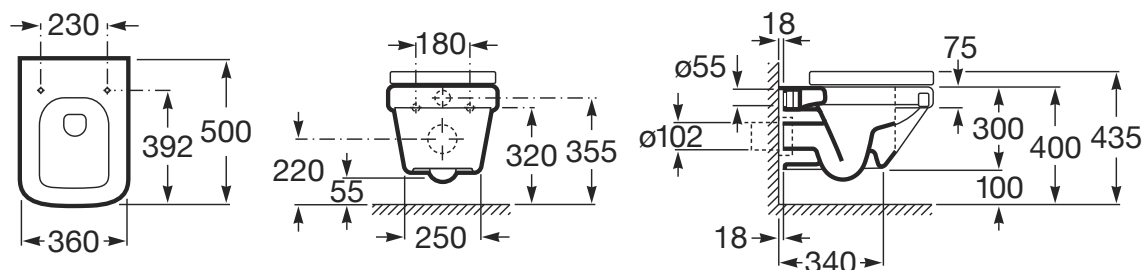


ROCA

DAMA-N WALL HUNG PAN



Dimensions are nominal measurements only.

SPECIFICATIONS

Recommended use	Domestic, Hotel & Commercial
Material	Pan: Vitreous China Seat: Urea
Colour	White
Rim configuration	Box Rim
Bowl configuration	P Trap
Pan fixing	Fixed to noggins in solid or cavity wall using brackets (not supplied)
Seat	Soft Close Seat
Inlet valve	Recommended maximum working pressure 1000 KPa
Weight	21 Kg



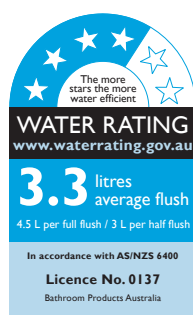
To see the complete ROCA range go to www.reece.com.au/bathrooms

CLEANING RECOMMENDATIONS

We recommend the use of soapy water or approved cleaners.

This product should not be cleaned with abrasive materials.

Damage caused by any improper treatment is not covered by the product warranty. Refer to Warranty Conditions.



Disclaimer: Products in this specification manual must by regulation be installed by licensed and registered trade people. The manufacturer/distributor reserves the right to vary specifications or delete models from their range without prior notification. Dimensions are nominal measurements only. Dimensions and set-outs listed are correct at time of publication however the manufacturer/distributor takes no responsibility for printing errors.

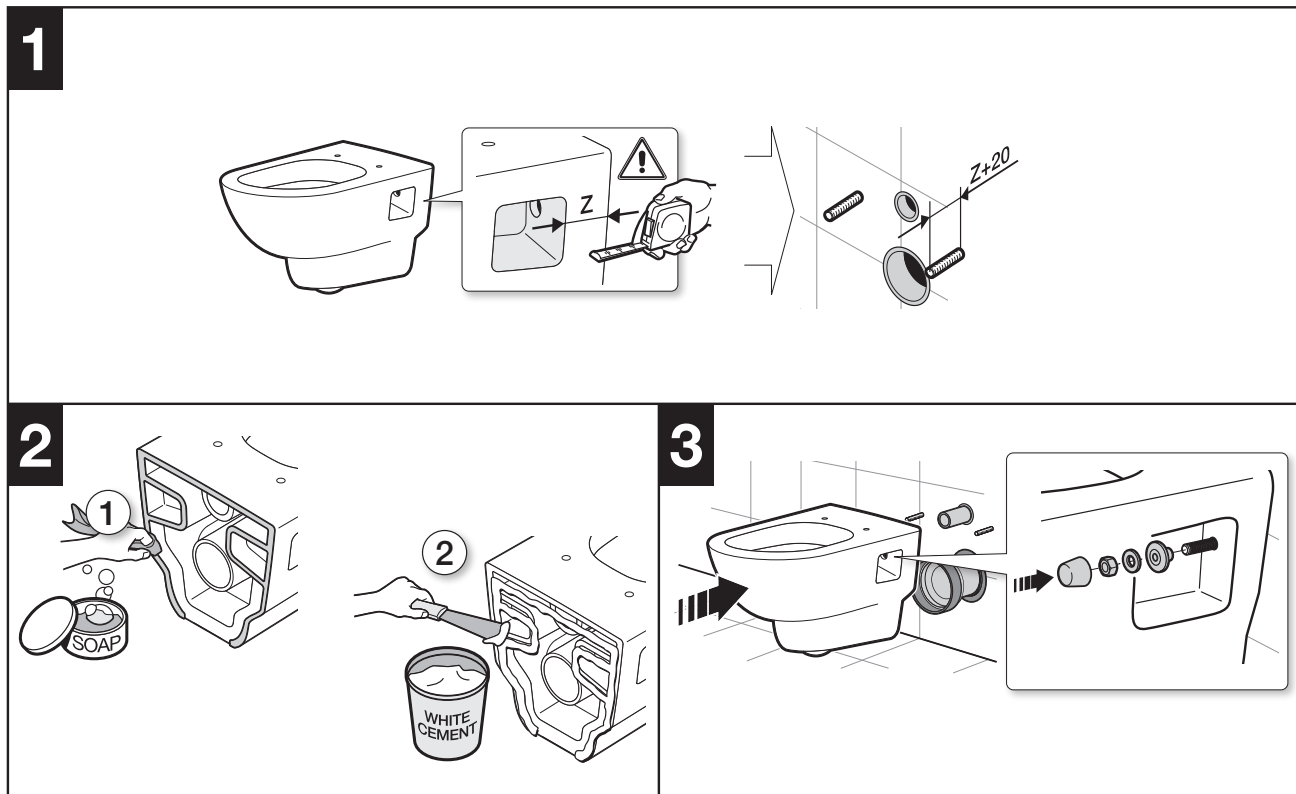
Tech Page Version 1



ROCA

DAMA-N WALL HUNG PAN

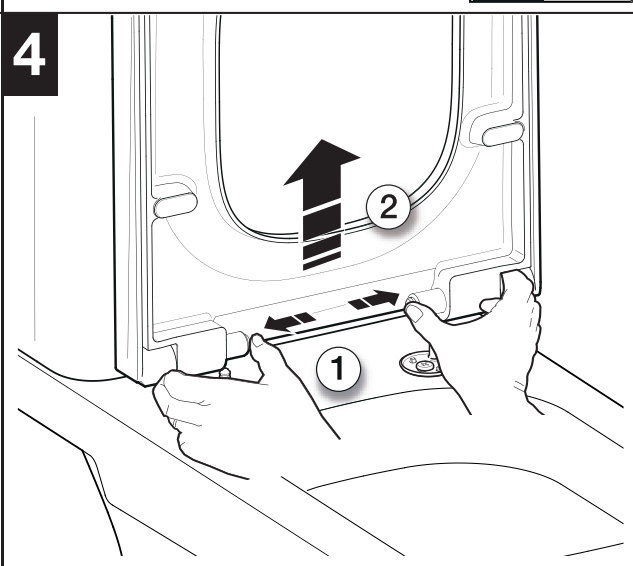
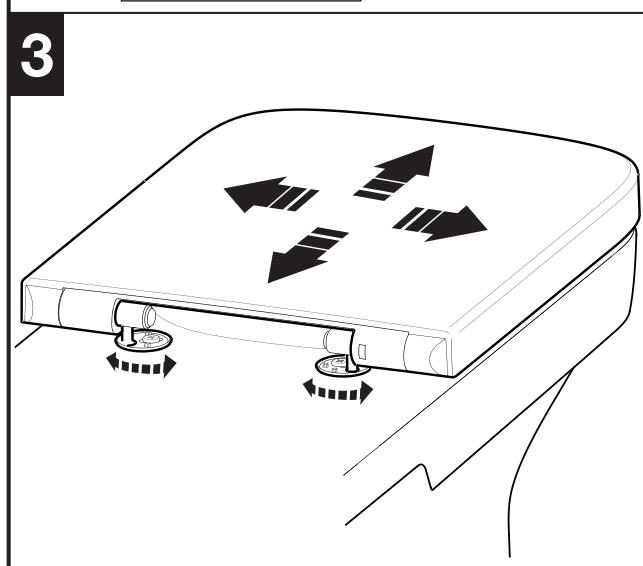
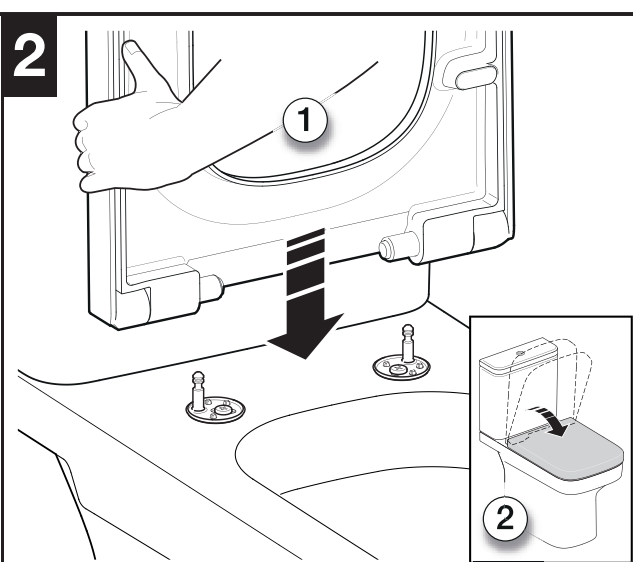
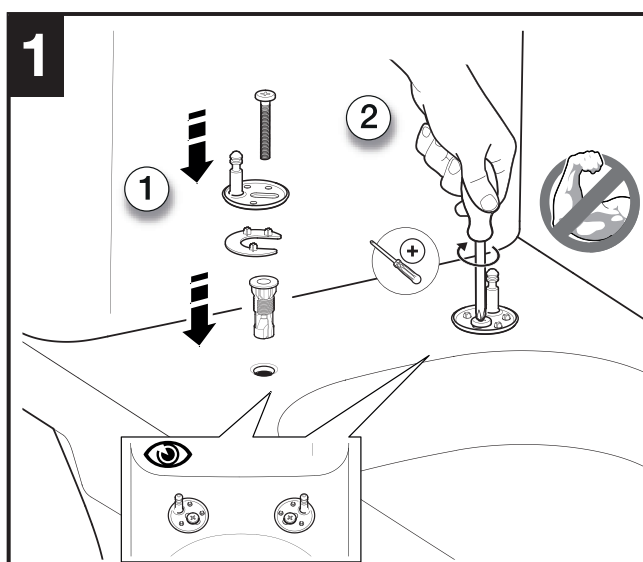
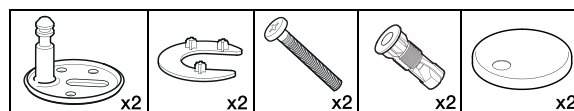
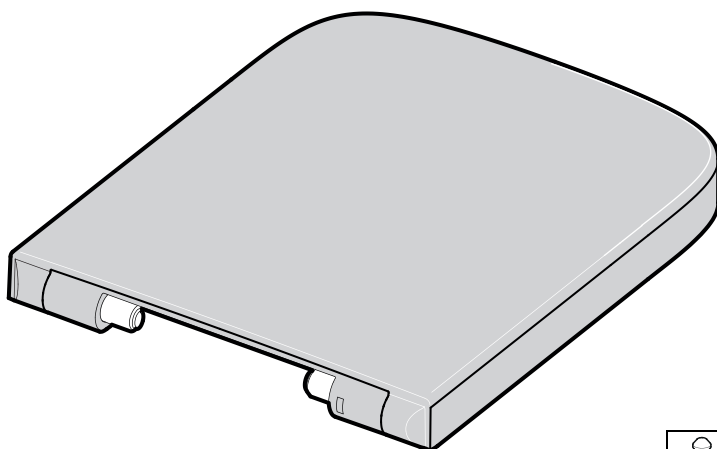
INSTALLATION INSTRUCTIONS



ROCA

DAMA-N WALL HUNG PAN

INSTALLATION INSTRUCTIONS - SEAT

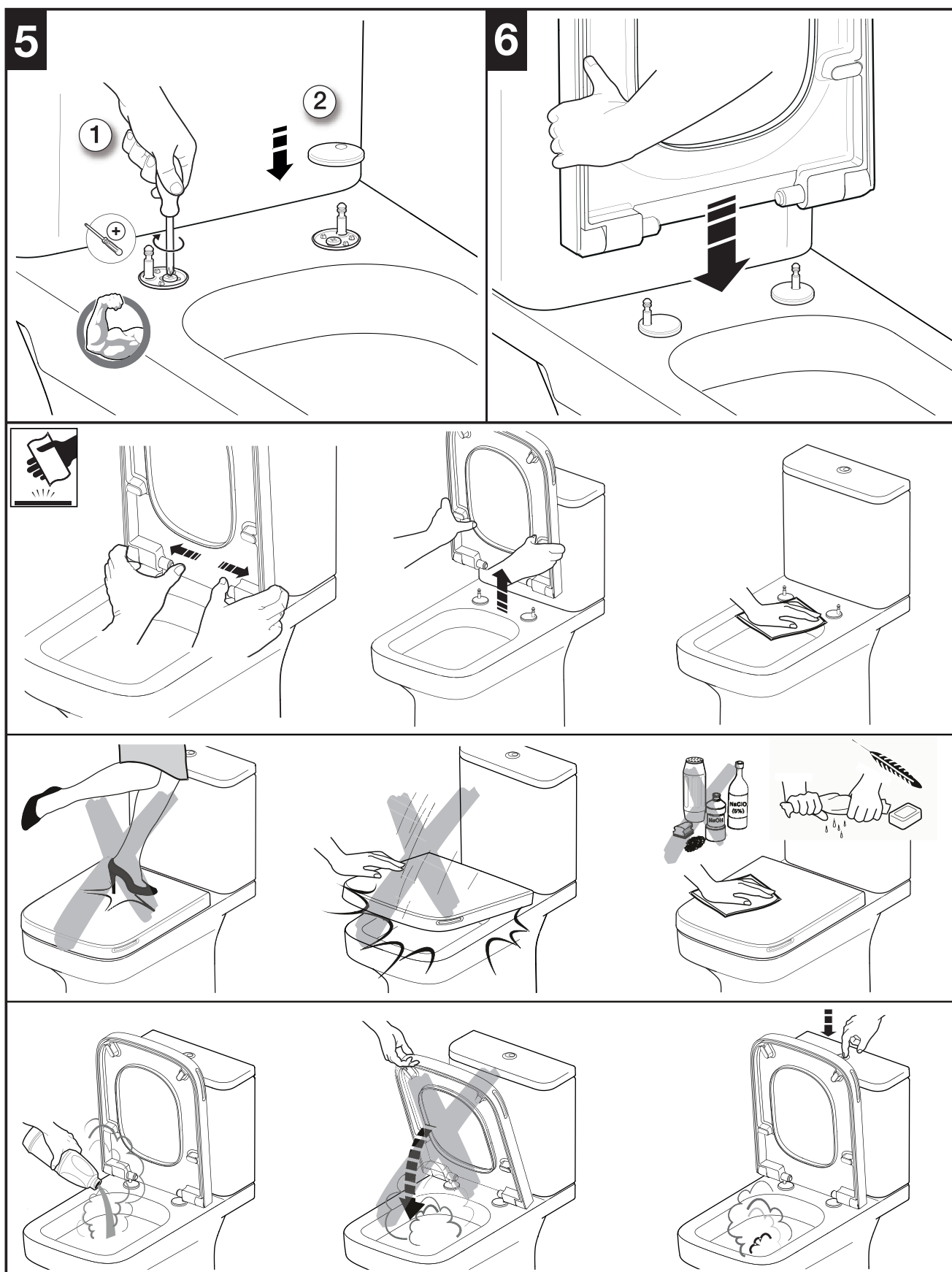


Plumbers, please ensure a copy of the installation instructions is left with the end user for future reference

ROCA

DAMA-N WALL HUNG PAN

INSTALLATION INSTRUCTIONS - SEAT






Plumbers, please ensure a copy of the installation instructions is left with the end user for future reference

ROCA

DAMA-N WALL HUNG PAN

SPARE PARTS

Image	Reece Code	Product Descripton	Part Number
	9505400	Dama-N Soft Close Seat Compact	A80R78C001
	9504724	Roca Seat Hinges Set	WY911691212001
	9506349	Roca Seat Buffer Set	WY911801413001

Plumbers, please ensure a copy of the installation instructions is left with the end user for future reference