

School Pattern Dual Mixer Diverter With SP012 Spout (Coles)

VP370C

Enware's vandal resistant School Pattern tapware features an easy to clean design. Constructed from dezincification resistant (DR) brass with durable chrome plated finish. The handle features an internal locking ring securing it to the spindle and requires a special key to remove.

KEY FEATURES

- Hob mount swivel spout with diverter
- Constructed from dezincification resistant (DR) brass
- Durable bright chrome finish
- 3 Star WELS (8 L/min) aerator supplied standard. 5 Star WELS (6 L/min) available on request - specify when ordering



PRODUCT CODES

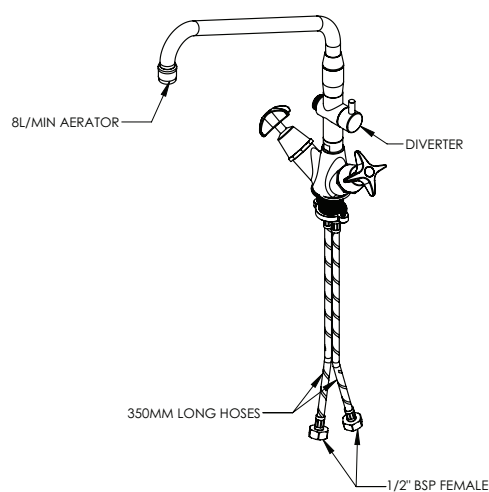
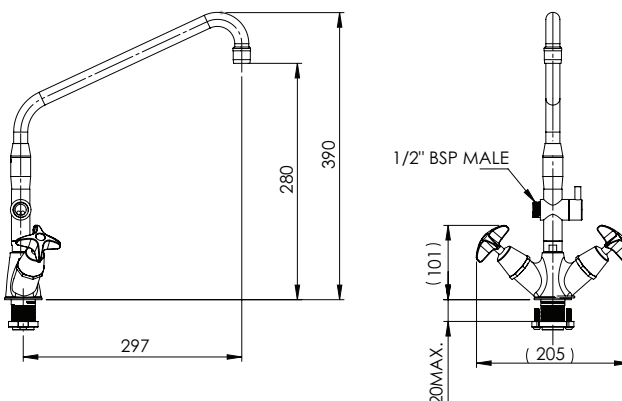
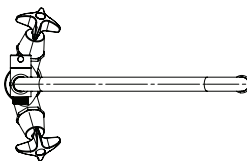
VP370C	School Pattern Dual Mixer Diverter With SP012 Spout (Coles)
--------	---

Version: Mar 22

School Pattern Dual Mixer Diverter With SP012 Spout (Coles)

TECHNICAL INFORMATION

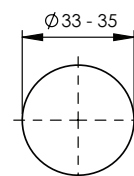
Maximum Static Pressure	800kPa
Working Pressure Range	50-500kPa
Maximum Working Temperature	85°C



Enware products are to be installed in accordance with the Plumbing Code of Australia and AS/NZS3500. Reference should also be made to the Australasian Health facility Guidelines (AHFG), ABCB and Local Government regulations when considering the choice of, and the installation of these products.

Enware Australia advises:

1. Due to ongoing Research and Development, specifications may change without notice. 2. Component specifications may change on some export models. 3. Refer to warranty statement for warranty details - www.enware.com.au/warranty



INSTALLATION DETAIL
(BENCH TOP CUTOUT)

Version: Mar 22