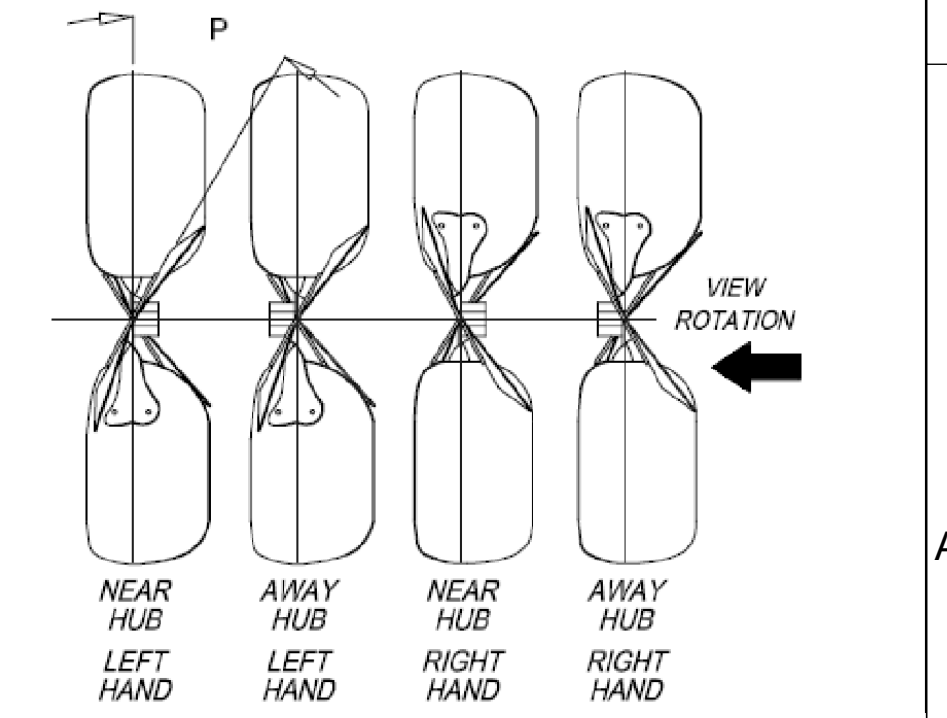
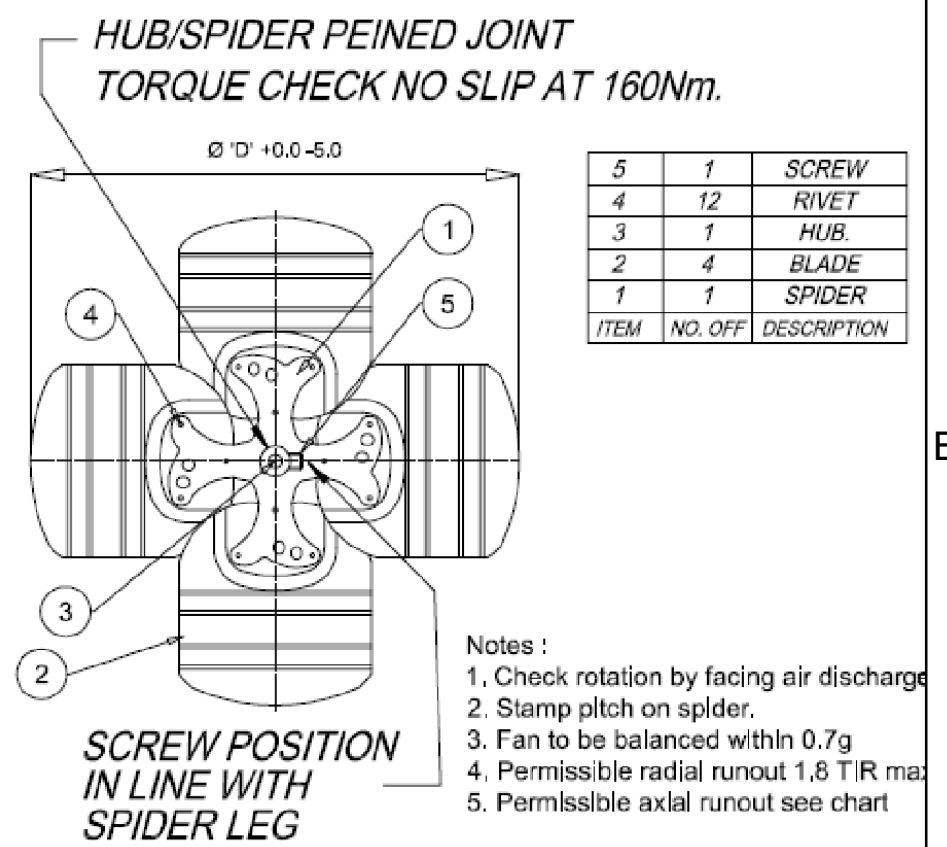


Part number	ØD	Hub Posn	Hand	Pitch P	Hub Bore	Powder Coat	AXIAL RUNOUT TIR MAX	Spider assy	Qty	Paddle	Qty	Rivet	Qty	Packing material					
PH4-610N15R08AA	610	NEAR	RIGHT	15°	1/2"	—	4.0	M2011-4-08	1	M3042-610	4	M2007-9-A	12	M2015-610-CNR	M2015-508-CTN	M2015-508-LNR	M2015-508-LP	M2092-08	M42P5001-07
PH4-610N20R08AA	610	NEAR	RIGHT	20°	1/2"	—	4.0	M2011-4-08	1	M3042-610	4	M2007-9-A	12	M2015-610-CNR	M2015-508-CTN	M2015-508-LNR	M2015-508-LP	M2092-08	M42P5001-07
PH4-610A24L08AA	610	AWAY	LEFT	24°	1/2"	—	4.0	M2011-4-08	1	M3042-610	4	M2007-9-A	12	M2015-610-CNR	M2015-508-CTN	M2015-508-LNR	M2015-508-LP	M2092-08	M42P5001-07
PH4-610N24R63AA	610	NEAR	RIGHT	24°	13mm	—	4.0	M2011-4-63	1	M3042-610	4	M2007-9-A	12	M2015-610-CNR	M2015-508-CTN	M2015-508-LNR	M2015-508-LP	M2092-08	M42P5001-07
PH4-610A25L08AA	610	AWAY	LEFT	25°	1/2"	—	4.0	M2011-4-08	1	M3042-610	4	M2007-9-A	12	M2015-610-CNR	M2015-508-CTN	M2015-508-LNR	M2015-508-LP	M2092-08	M42P5001-07
PH4-610N25R10AA	610	NEAR	RIGHT	25°	5/8"	—	4.0	M2011-4-10	1	M3042-610	4	M2007-9-A	12	M2015-610-CNR	M2015-508-CTN	M2015-508-LNR	M2015-508-LP	M2092-08	M42P5001-07
PH4-610A30R08AA	610	AWAY	RIGHT	30°	1/2"	—	4.0	M2011-4-08	1	M3042-610	4	M2007-9-A	12	M2015-610-CNR	M2015-610-CTN	M2015-610-LNR	M2015-610-LP	M2092-08	M42P5001-07
PH4-610N30R08AA	610	NEAR	RIGHT	30°	1/2"	—	4.0	M2011-4-08	1	M3042-610	4	M2007-9-A	12	M2015-610-CNR	M2015-610-CTN	M2015-610-LNR	M2015-610-LP	M2092-08	M42P5001-07
PH4-610N30L08AA	610	NEAR	LEFT	30°	1/2"	—	4.0	M2011-4-08	1	M3042-610	4	M2007-9-A	12	M2015-610-CNR	M2015-610-CTN	M2015-610-LNR	M2015-610-LP	M2092-08	M42P5001-07
PH4E610A30R69AA	610	AWAY	RIGHT	30°	19mm	—	4.0	M2011-4-69	1	M3042-610	4	M2007-9-A	12						
PH4E610N30R08AA	610	NEAR	RIGHT	30°	1/2"	—	4.0	M2011-4-08	1	M3042-610	4	M2007-9-A	12						
PH4E610N30R10AA	610	NEAR	RIGHT	30°	5/8"	—	4.0	M2011-4-10	1	M3042-610	4	M2007-9-A	12						
PH4-610A40L08AA	610	AWAY	LEFT	40°	1/2"	—	4.0	M2011-4-08	1	M3042-610	4	M2007-9-A	12	M2015-610-CNR	M2015-610-CTN	M2015-610-LNR	M2015-610-LP	M2092-08	M42P5001-07
PH4-610A40R08AA	610	AWAY	RIGHT	40°	1/2"	—	4.0	M2011-4-08	1	M3042-610	4	M2007-9-A	12	M2015-610-CNR	M2015-610-CTN	M2015-610-LNR	M2015-610-LP	M2092-08	M42P5001-07
PH4-610A40R10AA	610	AWAY	RIGHT	40°	5/8"	—	4.0	M2011-4-10	1	M3042-610	4	M2007-9-A	12	M2015-610-CNR	M2015-610-CTN	M2015-610-LNR	M2015-610-LP	M2092-08	M42P5001-07
PH4-610N40R10AA	610	NEAR	RIGHT	40°	5/8"	—	4.0	M2011-4-10	1	M3042-610	4	M2007-9-A	12	M2015-610-CNR	M2015-610-CTN	M2015-610-LNR	M2015-610-LP	M2092-08	M42P5001-07
PH4-610A40R12AA	610	AWAY	RIGHT	40°	3/4"	—	4.0	M2011-4-12	1	M3042-610	4	M2007-9-A	12	M2015-610-CNR	M2015-610-CTN	M2015-610-LNR	M2015-610-LP	M2092-08	M42P5001-07
PH4-610A40L59AA	610	AWAY	LEFT	40°	19mm	—	4.0	M2011-4-69	1	M3042-610	4	M2007-9-A	12	M2015-610-CNR	M2015-610-CTN	M2015-610-LNR	M2015-610-LP	M2092-08	M42P5001-07
PH4-660A28L08AA	660	AWAY	LEFT	28°	1/2"	—	4.0	M2011-4-08	1	M3042-660	4	M2007-9-A	12	M2015-610-CNR	M2015-610-CTN	M2015-610-LNR	M2015-610-LP	M2092-08	M42P5001-07
PH4-660N30R08AA	660	NEAR	RIGHT	30°	1/2"	—	4.0	M2011-4-08	1	M3042-660	4	M2007-9-A	12	M2015-610-CNR	M2015-610-CTN	M2015-610-LNR	M2015-610-LP	M2092-08	M42P5001-07
PH4-660N30L10AA	660	NEAR	LEFT	30°	5/8"	—	4.0	M2011-4-10	1	M3042-660	4	M2007-9-A	12	M2015-610-CNR	M2015-610-CTN	M2015-610-LNR	M2015-610-LP	M2092-08	M42P5001-07
PH4-660N30R10AA	660	NEAR	RIGHT	30°	5/8"	—	4.0	M2011-4-10	1	M3042-660	4	M2007-9-A	12	M2015-610-CNR	M2015-610-CTN	M2015-610-LNR	M2015-610-LP	M2092-08	M42P5001-07
PH4-660A36L12AA	660	AWAY	LEFT	36°	3/4"	—	4.0	M2011-4-08	1	M3042-660	4	M2007-9-A	12	M2015-610-CNR	M2015-610-CTN	M2015-610-LNR	M2015-610-LP	M2092-08	M42P5001-07
PH4-660N40R69AA	660	NEAR	RIGHT	40°	19mm	—	4.0	M2011-4-69	1	M3042-660	4	M2007-9-A	12	M2015-610-CNR	M2015-610-CTN	M2015-610-LNR	M2015-610-LP	M2092-08	M42P5001-07



△	PE-CYC-0000002-MIC-1	Add PH4-610N24R63AA	2015-05-14
△	PE-M_C-0000117-MIC-1	New model added	2014-04-22
△	PE-M_C-0000021-MIC-1	Add PH4-457N30R08AA	2012-12-04
△	PE-P_C-0000096-MIC-1	Add PH4-610N40R10AA	2012-06-15
△	PE-P_C-0000096-MIC-1	Add PH4-559N40R10AA	2012-06-15
△	PE-P_C-0000096-MIC-1	Add PH4-508N40R10AA	2012-06-15
△	PE-A_T-0000010-MIC-1	Add PH4-496N30R08AA	2010-06-01
△	PE-A_T-0000010-MIC-1	Add PH4-445N30R08AA	2010-06-01
△	MIC596	Paddle stiffening shown	2008-04-03
△	MIC512	Add PH4E610A30R69AA	2007-05-01
△	MIC512	Add PH4-610A40L69AA	2007-05-01
Item	MIC	Description	Date

COPYRIGHT (PER REVISION DATE) REGAL BELOIT MALAYSIA SDN. BHD. ALL RIGHTS RESERVED. PROPRIETARY AND CONFIDENTIAL INFORMATION - THIS DOCUMENT IS THE PROPERTY OF REGAL BELOIT MALAYSIA SDN. BHD. ("OWNER") AND CONTAINS OWNER'S PROPRIETARY INFORMATION. ANY PERSON, CORPORATION OR OTHER FIRM RECEIVING IT IS DEEMED, BY RECEIVING IT, TO AGREE THAT IT, AND/OR ANY PART OF IT, SHALL NOT BE DISCLOSED TO ANY PERSON, CORPORATION OR OTHER ENTITY, DUPLICATED, AND/OR USED, EXCEPT AS EXPRESSLY APPROVED IN WRITING IN ADVANCE BY OWNER. THIS DOCUMENT SHALL BE RETURNED TO OWNER UPON REQUEST. IT MAY BE SUBJECT TO CERTAIN RESTRICTIONS UNDER APPLICABLE EXPORT CONTROL LAWS AND REGULATIONS.

TOLERANCES (EXCEPT AS NOTED):	DRAWN BY HAZMER	<b>REGAL</b> ® Regal Beloit Malaysia Sdn. Bhd.
REFER TO ISO 2768 T1 / v	DATE 2020.03.24	
REMOVE BURRS & BREAK SHARP EDGES:	APPROVED BY MICHAEL CHAI	DESCRIPTION 4 BLADE PROPELLER FAN Ø610mm to Ø660mm
ALL DIMENSION IN mm	DATE 2020.03.24	MATERIAL
	REFERENCE R	PROCESS/FINISH
	THIRD ANGLE PROJECTION	SIZE B
		DRAWING NUMBER PH4-610etc
		SHEET 1 OF 1