

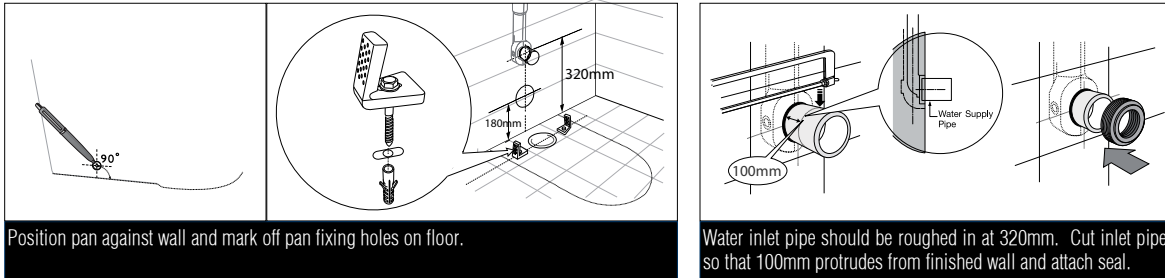
KADO

Kado Lux Rimless Back to Wall Pan (4 Star)

INSTALLATION INSTRUCTIONS

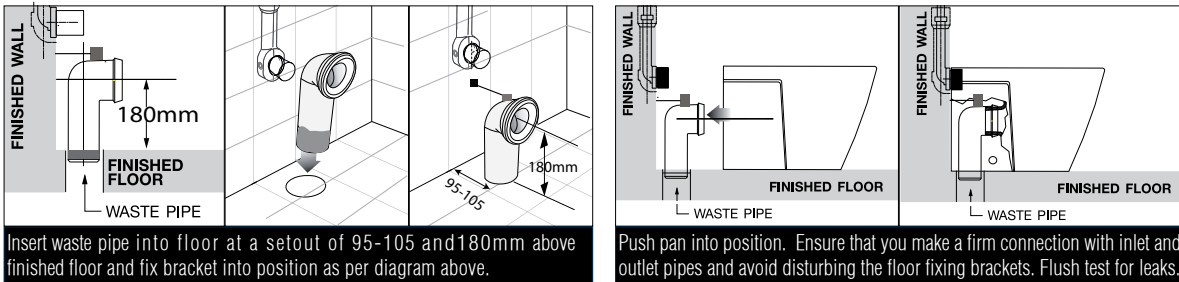
Note: All measurements for roughing in should be taken from the finished wall/floor.

Fixing bracket & Water inlet

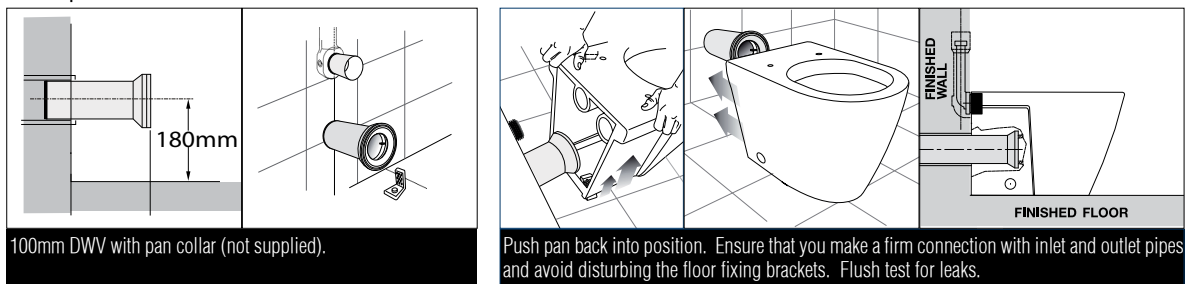


S-Trap Installation

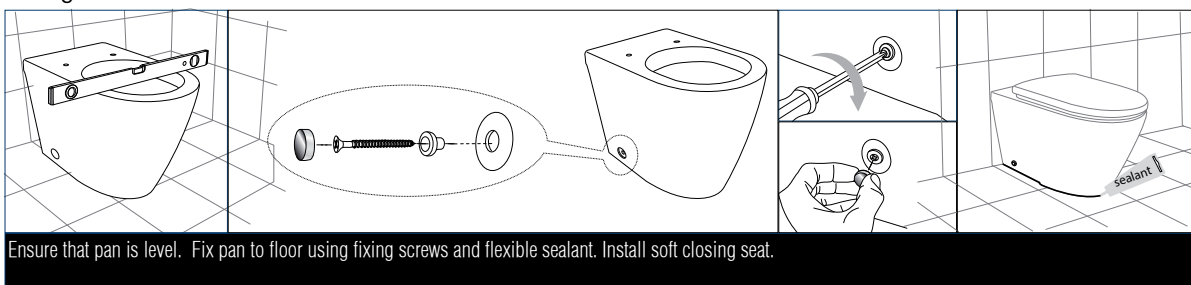
NOTE: This is a set out of 95-105mm



P-Trap Installation



Fixing Pan to Floor



Dimensions are nominal measurements only.

Plumbers, please ensure a copy of the installation instructions is left with the end user for future reference.

Published 29/07/2020