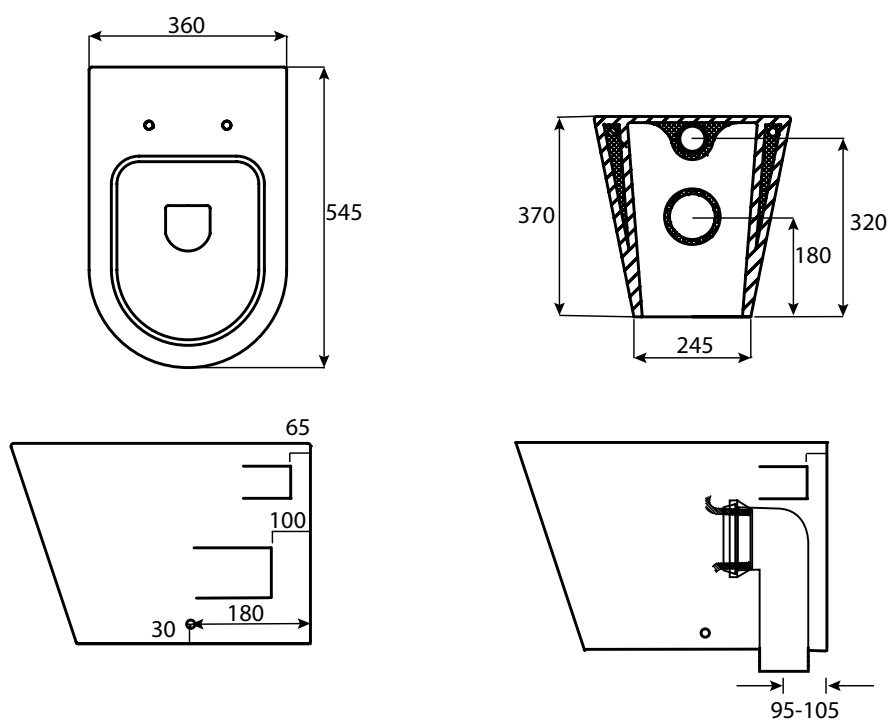


# KADO

## LUX BACK TO WALL PAN



Dimensions are nominal measurements only

### SPECIFICATIONS

<b>Recommended Use</b>	Domestic, Hotel and Commercial
<b>Material</b>	Vitreous china
<b>Colour</b>	White
<b>Weight</b>	Pan: 28kg
<b>Seat</b>	Soft close quick release toilet seat Soft close quick release thin toilet seat
<b>Rim Configuration</b>	Box Rim
<b>Bowl Configuration</b>	Universal S & P
<b>Set Out</b>	S Trap: 95-105mm
<b>Pan Fixing</b>	Screwed to floor (Fixing Screws supplied)



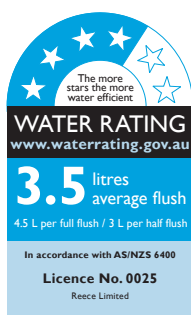
To see the complete KADO range go to [www.reece.com.au/bathrooms](http://www.reece.com.au/bathrooms)

### CLEANING RECOMMENDATIONS

We recommend the use of soapy water or approved bathroom cleaners.

This bathroom product should not be cleaned with abrasive materials.

Damage caused by any improper treatment is not covered by the product warranty. Refer to Warranty Conditions.



**Disclaimer:** Products in this specification manual must by regulation be installed by licensed and registered trade people. The manufacturer/distributor reserves the right to vary specifications or delete models from their range without prior notification. Dimensions are nominal measurements only. Dimensions and set-outs listed are correct at time of publication however the manufacturer/distributor takes no responsibility for printing errors.

Tech Page Version 3

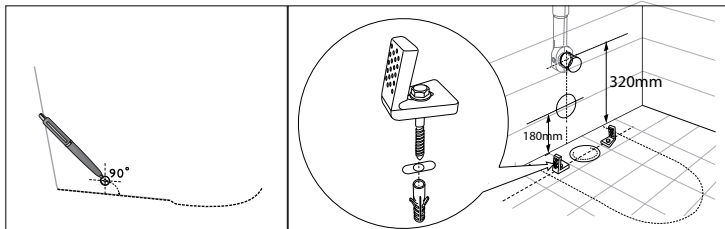


# KADO LUX BACK TO WALL PAN

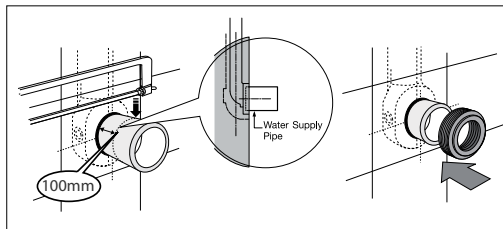
## INSTALLATION INSTRUCTIONS

**Note:** All measurements for roughing in should be taken from the finished wall/floor.

### Fixing bracket & Water inlet



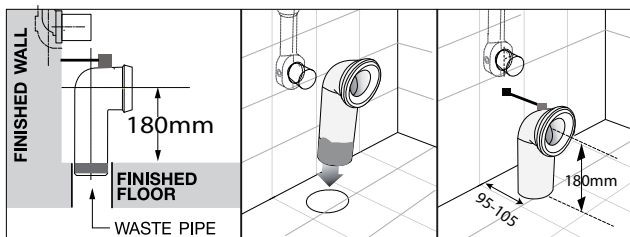
Position pan against wall and mark off pan fixing holes on floor.



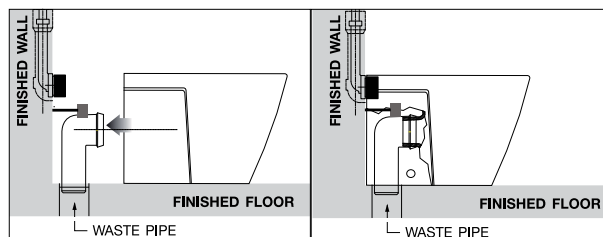
Water inlet pipe should be roughed in at 320mm. Cut inlet pipe so that 100mm protrudes from finished wall and attach seal.

### S-Trap Installation

**NOTE:** This is a set out of 95-105mm

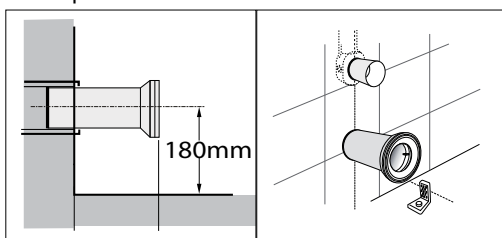


Insert waste pipe into floor at a set out of 95-105 and 180mm above finished floor and fix bracket into position as per diagram above.

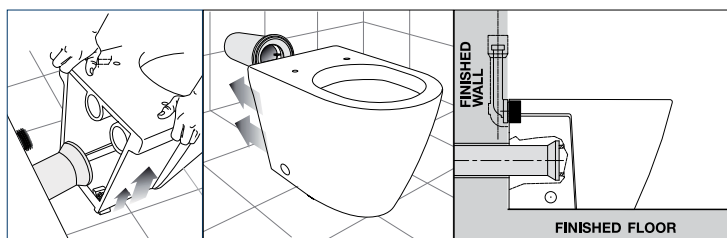


Push pan into position. Ensure that you make a firm connection with inlet and outlet pipes and avoid disturbing the floor fixing brackets. Flush test for leaks.

### P-Trap Installation

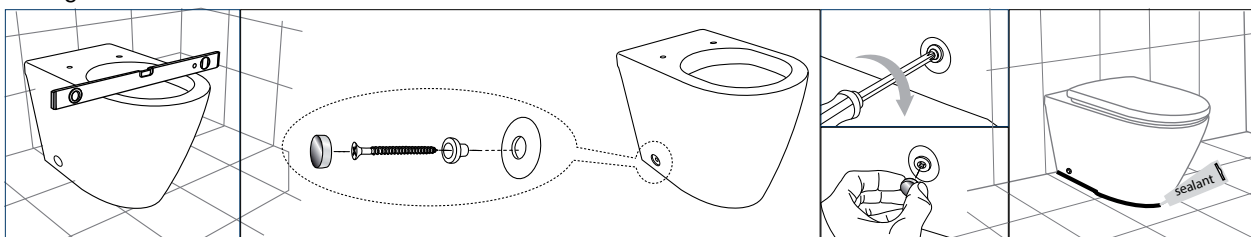


100mm DWV with pan collar (not supplied).



Push pan back into position. Ensure that you make a firm connection with inlet and outlet pipes and avoid disturbing the floor fixing brackets. Flush test for leaks.

### Fixing Pan to Floor



Ensure that pan is level. Fix pan to floor using fixing screws and flexible sealant. Install soft closing seat.

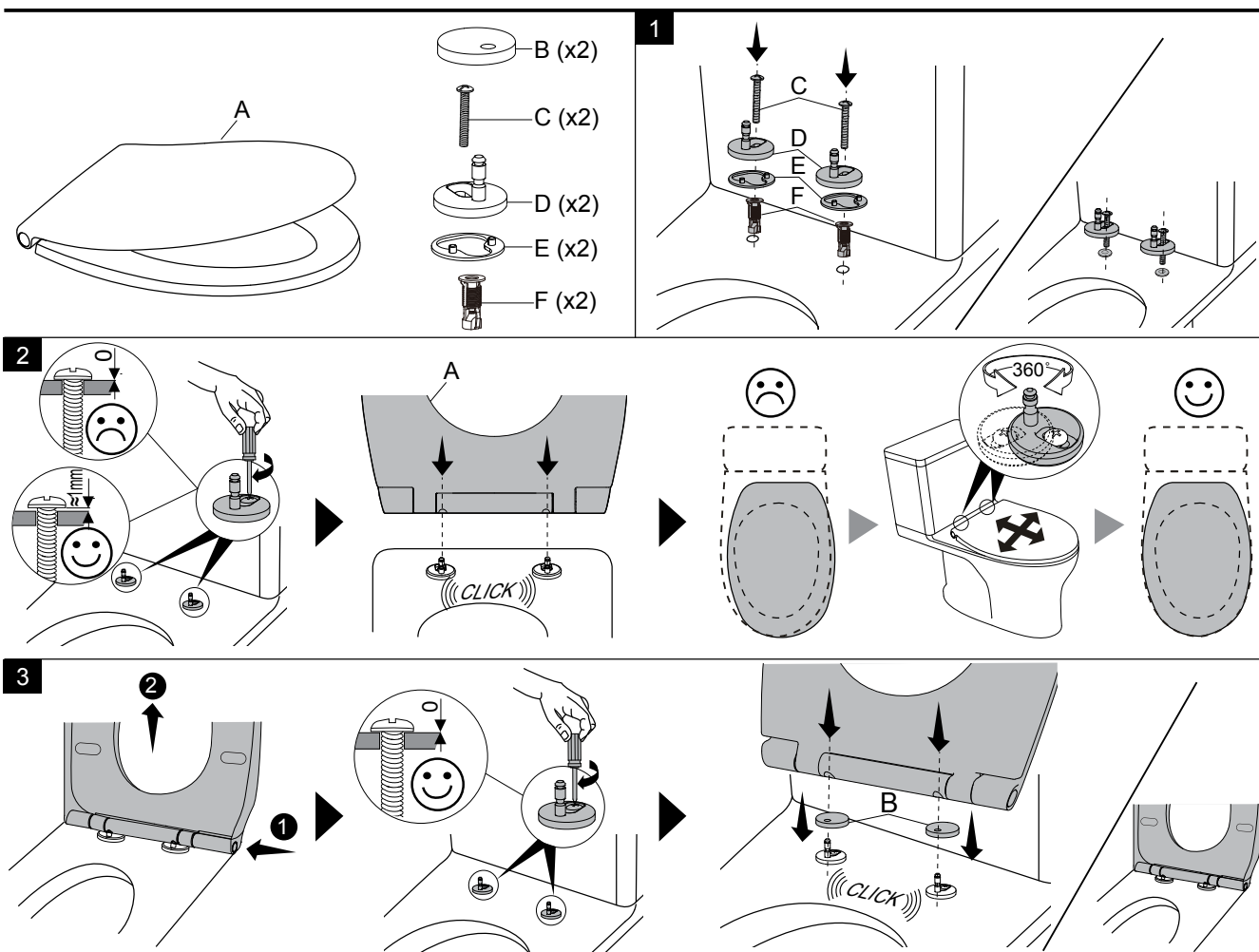
Plumbers, please ensure a copy of the installation instructions is left with the end user for future reference

# KADO LUX BACK TO WALL PAN

## LUX THIN SEAT INSTALLATION INSTRUCTIONS

### Important Note:

Soft close seat and covers can take up to 30 seconds to close. Do not force the closing mechanism as this may result in damage. The fixings of your seat may require re-tightening occasionally depending on use.



### SPARE PARTS

Picture	Reece Code	Product Description
	<b>9506341</b>	KADO LUX THIN SEAT BUFFER SET
	<b>9506342</b>	KADO LUX THIN SEAT HINGE SET

Plumbers, please ensure a copy of the installation instructions is left with the end user for future reference

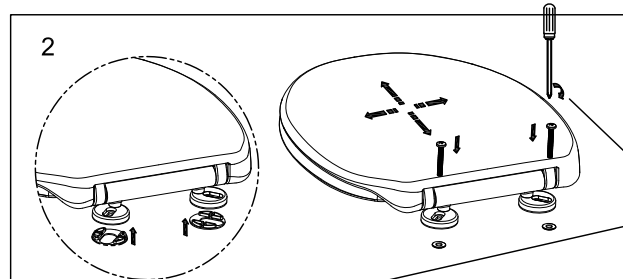
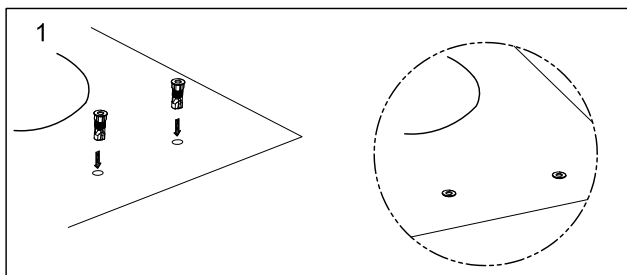
# KADO

## LUX BACK TO WALL PAN

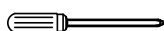
### LUX SEAT INSTALLATION INSTRUCTIONS

#### Important Note:

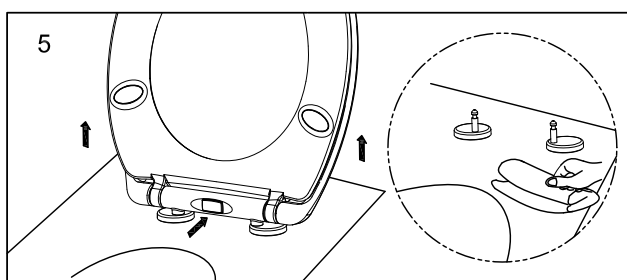
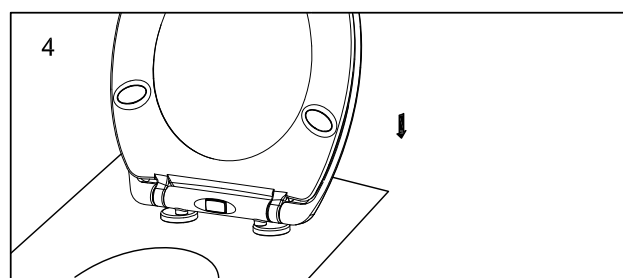
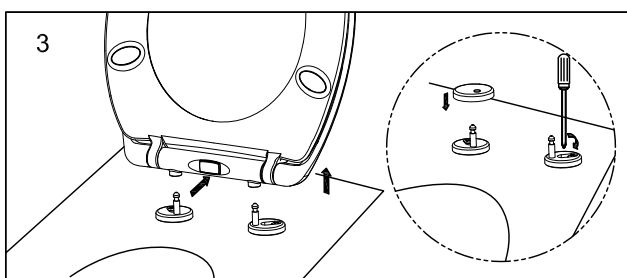
Soft close seat and covers can take up to 30 seconds to close. Do not force the closing mechanism as this may result in damage. The fixings of your seat may require re-tightening occasionally depending on use.



TOOLS:





Cross Screwdriver



Top Fixing Installation procedure.

1. Insert the nylon toggles into the hinge holes of the pan.
2. Mount the hinges onto the shaft of the toilet seat.
3. Plug the bolt into the nylon toggle.
4. Align the toilet seat with the pan.
5. Tighten the screws.
6. Push the button to release the seat.
7. Lift the toilet seat.
8. Insert hinge covers over posts.
9. Fix seat into final position.

### SPARE PARTS

Picture	Reece Code	Product Description
	<b>9506723</b>	KADO QUICK RELEASE SCS BUFFER SET
	<b>9503294</b>	TOP FIX QUICK RELEASE HINGE SET

Plumbers, please ensure a copy of the installation instructions is left with the end user for future reference