

Posh Solus MK3 Built-in Wall Basin and Bath Mixer

IMPORTANT NOTE:

Mixer must be installed to the requirements of AS/NZS 3500 by a qualified plumber. Your mixer comes to you already factory assembled and tested. We do not recommend the dismantling of any internal part of the mixer. The mixers are factory tested and sealed so as to give the best performance.

INSTALLATION INSTRUCTIONS:

1. Flush out new pipe work prior to connecting the new mixer
2. All mixers should be installed with isolating stop cocks (Arco).
3. In some areas where the incoming water exceeds 500kpa, an approved pressure limiting device must be installed. Equal pressure for hot and cold water supply is required.
4. Mixers are recommended for use on mains pressure and instantaneous systems only.
5. When installing the mixer make sure that the cap and handle (1) and bath spout (4) are removed with the wall cover plate (3).
6. In a typical installation, the mixer is mounted on a timber/ metal noggin and secured with saddles.
7. Connect mixer to hot and cold water supply
8. Pressure check all connections. Leaking joints are not covered by the warranty.
9. When ready for finishing, remove the plastic cover and reassemble handle and cap (1).

NOTE:

For wall mounted Basin Tapware, consideration should be made to installation height and length of outlet in relation to height and positioning of basin on bench top.

SERVICING - REPLACEMENT OF CARTRIDGE:

1. Call the plumber, preferably the one that installed the mixer (most problems are caused by supply lines not being cleaned out properly prior to mixer installation). Remove indicator cap (1 & 4) and unscrew the locking screws.
2. Lift off lever (1) and outlet (4), remove cover plate (3), cartridge dome (6), locking nut (9) and sleeve (10).
3. Lift out cartridge (8) and replace with new, making sure the two lugs on bottom of the cartridge sit properly into the allocated holes at the base of the body.

CLEANING RECOMMENDATIONS

We recommend the use of soapy water or approved cleaners.

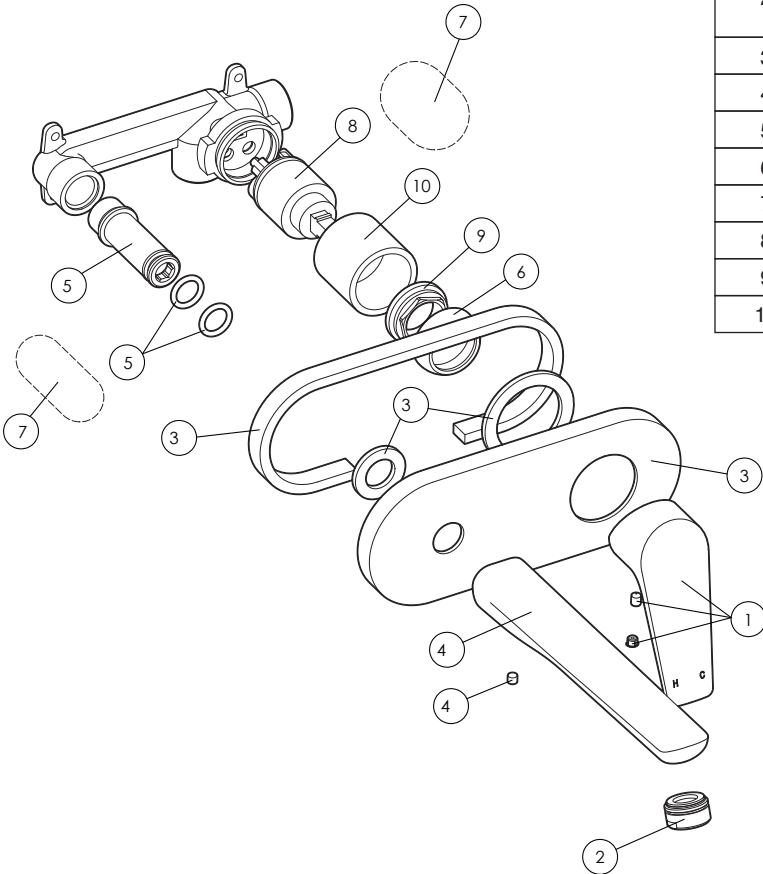
This product should not be cleaned with abrasive materials.

Damage caused by any improper treatment is not covered by the product warranty - refer to Warranty Conditions

Please ensure a copy of the installation instructions is left with the end user for future reference

Posh Solus MK3 Built-in Wall Basin and Bath Mixer

EXPLODED DIAGRAM:



Number	Part	CP Finish	MB Finish
1	Handle complete	2269910	2269911
2	Aerator complete basin	2250685	2264578
	Aerator complete bath	2269925	2269926
3	Cover plate	2269912	2269913
4	Spout	2269914	2269915
5	Coupling sleeve, O-rings	2269916	
6	Cartridge dome	2269917	2269918
7	Protectors	2269919	
8	Cartridge	2269920	
9	Cartridge locknut	2269921	
10	Cartridge sleeve	2269922	2269923