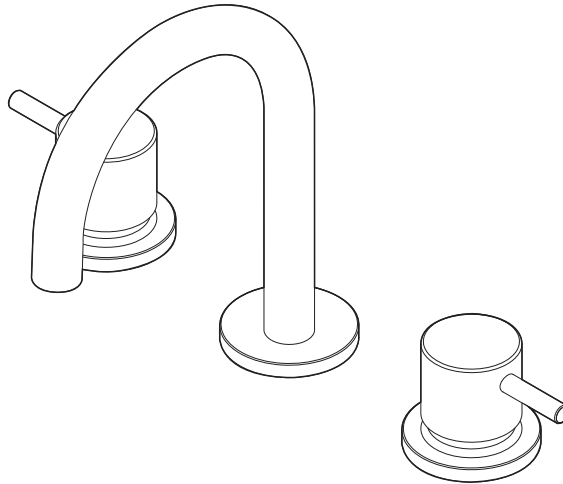


# mizu

## Drift Basin Set (6 Star)



### Installation Instructions

**Important**

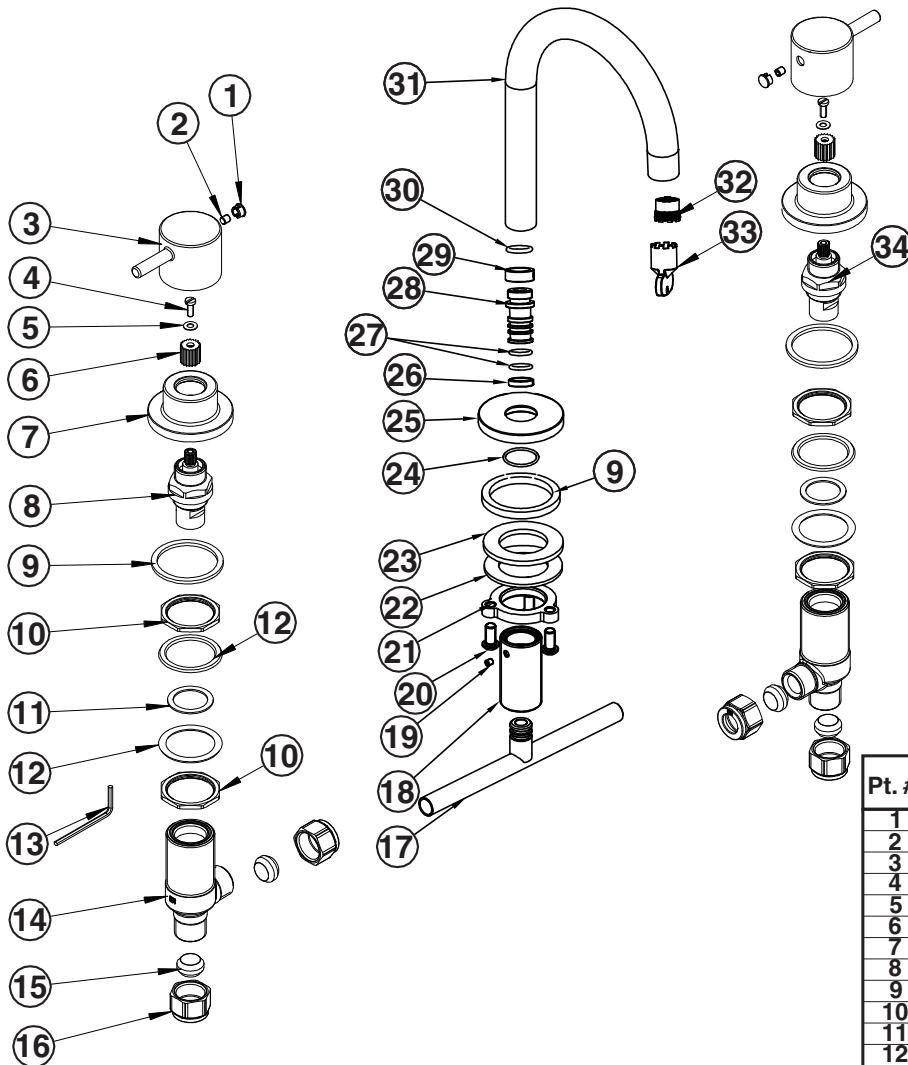
Tapware must be installed to the requirements of AS/NZS 3500 by a qualified plumber. Your tapware comes to you already factory assembled and tested. We do not recommend the dismantling of any internal part of the tapware. The tapware is factory tested and sealed so as to give the best performance.

**Note:** Ensure water lines are flushed free of impurities.

1. Fit nuts and Plastic Olives (15-16) to Tee Piece (17). If required cut Tee piece to length to match tap hole centres. Fit assembled basin bodies stop to tee piece.
2. Place outlet locking nut and washers and Connector (18-23) onto Tee Piece (17).
3. Insert basin stop bodies through basin holes adjust top and bottom Locking Nuts (10) so that thread on basin body protrude sufficiently to allow the top lock nut to screw down and tighten the basin bodies. Ensure basin bodies are aligned and protrude evenly out of basin.
4. Screw both Flanges (7) onto thread of basin stop bodies.
5. Fit off handles by push onto pre-installed Splines (6). Ensure they are aligned and then secure handles in place by tightening Grub Screw (2). Finish off by inserting Handle Plug (1).
6. From above push in complete assembled Outlet (20-31) onto Tee piece and Connector (17-18).
7. From underneath screw up Locknut (21) till outlet is secured firmly .in position. Once tight secure lock nut in place by tightening Screws (20).
8. Connect water supply to the hot and cold basin bodies, If using flexible connectors to connect water supply ensure they are not over tightened ,stretched, twisted or excessively bent.  
**Note: Do not use Teflon tape or thread locking compound on any of the threads.**
9. Turn on water supply and check for any leaks.

# mizu

## Drift Basin Set (6 Star)



Pt. #	Qty.	Description
1	2	
2	2	Handle complete hot & cold 1-3
3	2	
4	2	Screw
5	2	Washer
6	2	Spline
7	2	Flange
8	1	
9	3	
10	4	
11	2	
12	2	Basin stop body( 8-16)
13	1	
14	2	
15	4	
16	4	
17	1	Tee Piece
18	1	Outlet Adaptor
19	1	Grub Screw
20	3	Screws
21	1	Outlet Locking Nut
22	1	Washer
23	1	
24	1	
25	1	
26	1	
27	2	Complete Outlet( 23-31)
28	1	
29	1	
30	1	
31	1	
32	1	Neoperl Aerator
33	1	Aerator Tool
34	1	Cartridge - Cold

### Care Details

We recommend the use of soapy water or approved cleaners. This product should not be cleaned with abrasive materials. Damage caused by any improper treatment is not covered by the product warranty - refer to Warranty Conditions on the last page.

**Plumbers, please ensure a copy of the installation instruction is left with the end user for future reference.**

