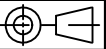
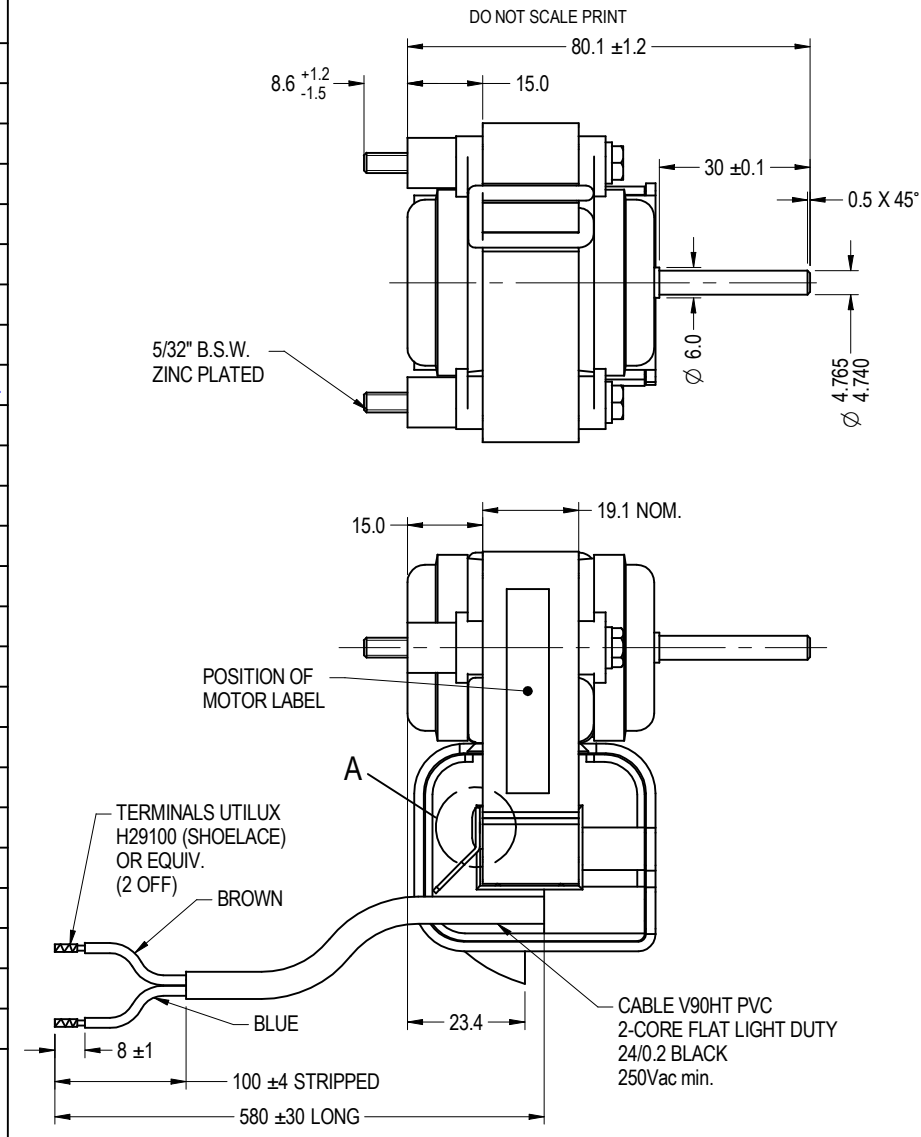


NOTE : FASCO AUSTRALIA IS HAPPY TO PROVIDE TECHNICAL ASSISTANCE TO OUR CUSTOMERS IN MANY AREAS. HOWEVER, SINCE FASCO AUSTRALIA IS NOT AWARE OF ALL DATA CONCERNING THE USE AND APPLICATION OF THIS MOTOR, THE SUITABILITY OF THE MOTOR FOR THE APPLICATION MUST BE DETERMINED BY AND IS THE RESPONSIBILITY OF THE CUSTOMER.



MOTOR SPECIFICATION

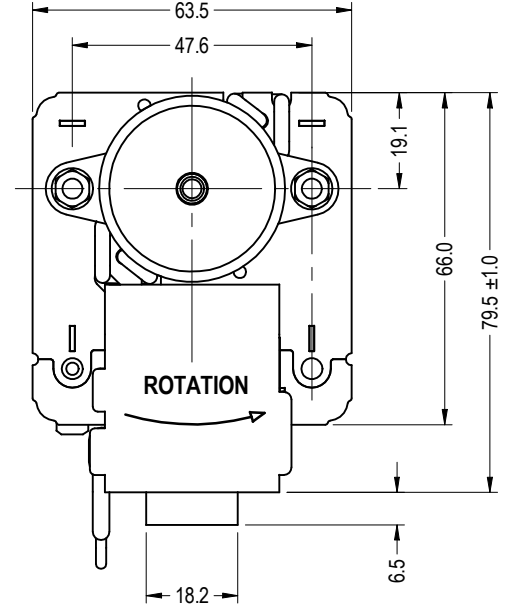
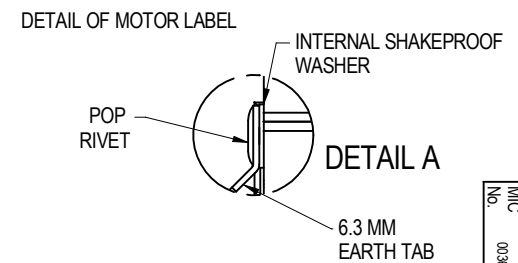
| | | | | |
|-----------------------------|---------------------|--------------|---------------|-------|
| CUSTOMER | ----- | | | |
| CUSTOMER P/N | ----- | | | |
| QR No. | ---- | CAPACITOR | uf / V | |
| POWER OUTPUT | 8 W | START | ---- | |
| MOTOR TYPE | S/POLE | RUN | ---- | |
| SUPPLY | VOLTS | HERTZ | PHASE | POLES |
| | 240 | 50 | 1 | 2 |
| ENCLOSURE | CLIP ON BOBBIN | | | |
| SPEED (RPM) AT RATED OUTPUT | 2200±100 | WINDING TYPE | SINGLE SP. | |
| ROTATION | ANTI-CLOCKWISE | | | |
| INSULATION CLASS | B | DUTY | AOM | |
| THERMAL PROTECTION | ZP | | | |
| RATED CURRENT | 0.27A | | | |
| APPLICATION | REFRIGERATION MOTOR | | | |
| MOUNTING | BOBBIN & SCREWS | | | |
| BEARING & LUBRICATION | 626ZZ 140°C GREASE | | | |
| SUPPLY LEAD | COLOUR | BLACK | | |
| | LENGTH | AS NOTED | | |
| | TERMINALS | AS SHOWN | | |
| | Q.C. HOUSING | ---- | | |
| EARTH PROVISION | ----- | | | |
| BASIC BUILD SPECIFICATION | ----- | | | |
| PERFORMANCE SPECIFICATION | SPM53001-01 | | | |
| SHAFT MATERIAL | MILD STEEL | | | |
| CONNECTION DIAGRAM | ----- | PAINT SPEC | CLEAR VARNISH | |



FASCO **J06KR10J**
 240V 50Hz 0.27A
 Class B Type:S/Pole Prot.ZP
 Duty AOM IP20 PH1

DATE CODE
 29 WEEK
 11 YEAR
 A FACTORY

NEB3



PACKAGING
 20 - MOTORS PER BOX
ADDITIONAL PROTECTION :-
 CORROSION INHIBITING PAPER IN EACH BOX
 SHAFT COATED WITH RUST INHIBITOR
PALLET AND BOX LABELS TO HAVE:-
 FASCO NUMBER
 DATE OF MANUFACTURE
 QUANTITY
 WEIGHT

SPECIAL REQUIREMENTS
PACK PARTS IN PLASTIC BAG AND ATTACH TO MOTOR LEAD.
 2 - NUT 5/32" B.S.W. 5/16" A/F HEX ZINC PLATED
 2 - 4 DIA INTERNAL SHAKEPROOF WASHER ZINC PLATED.

DIMENSIONS IN mm UNLESS OTHERWISE SPECIFIED

GENERAL TOLERANCES
 LINEAR: X = ±1.0
 XX = ±0.25
 XXX = ±0.1
 ANGULAR: X = 2°
 XX = ±0.5°

SURFACE FINISHES MAX 3.0 MICRO METRES
 SYMBOLS PER A.S. 1100

This drawing remains the property of Fasco Australia Pty. Ltd.
 No part or parts of this drawing may be reproduced without written permission.

| | | |
|----------|----------|----------|
| MAT'L | | |
| FINISH | | |
| DRAWN | MURFETTR | 21/07/11 |
| CHECKED | BALCHANT | 24/11/11 |
| RELEASED | BALCHANT | 24/11/11 |
| SCALE | 1:1 | |

FASCO
AUSTRALIA
 ABN 76 000 010 944

| | | |
|--------|-----------------------------|--|
| FRAME | | |
| STATUS | R | |
| SHEET | DWG. NO. | |
| | .MOTOR 240V 50HZ 1SP ACW | |
| | J06KR10J | |
| | REVISION | |
| | B | |

MIC No. 003649
 By: MURFETTR Date: 24/11/11
 MIC Note: ADDED 6.3MM EARTH TAB AS REQUESTED BY CUSTOMER