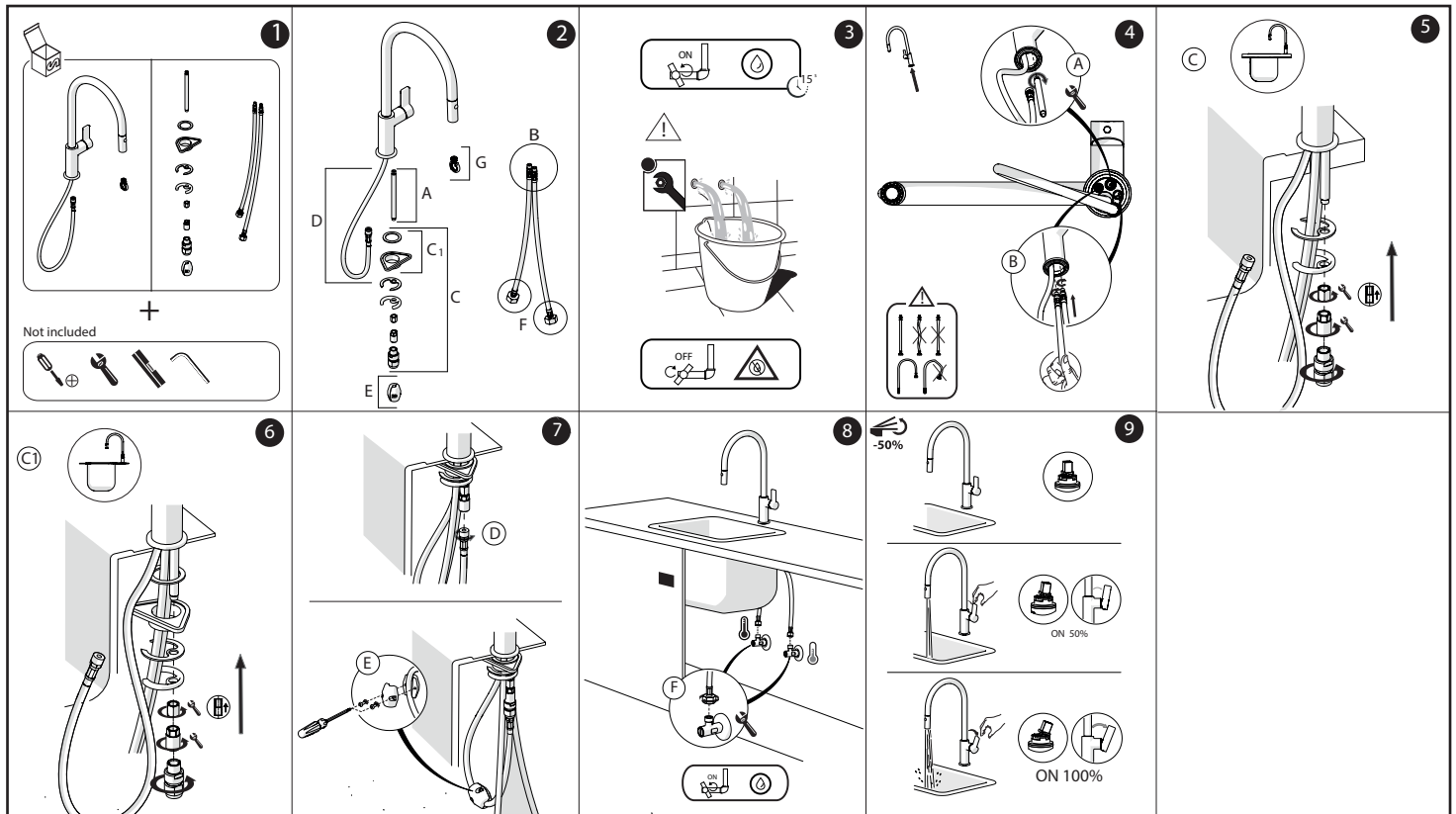


Nobili Flag Pull Out Sink Mixer Chrome (4 Star)

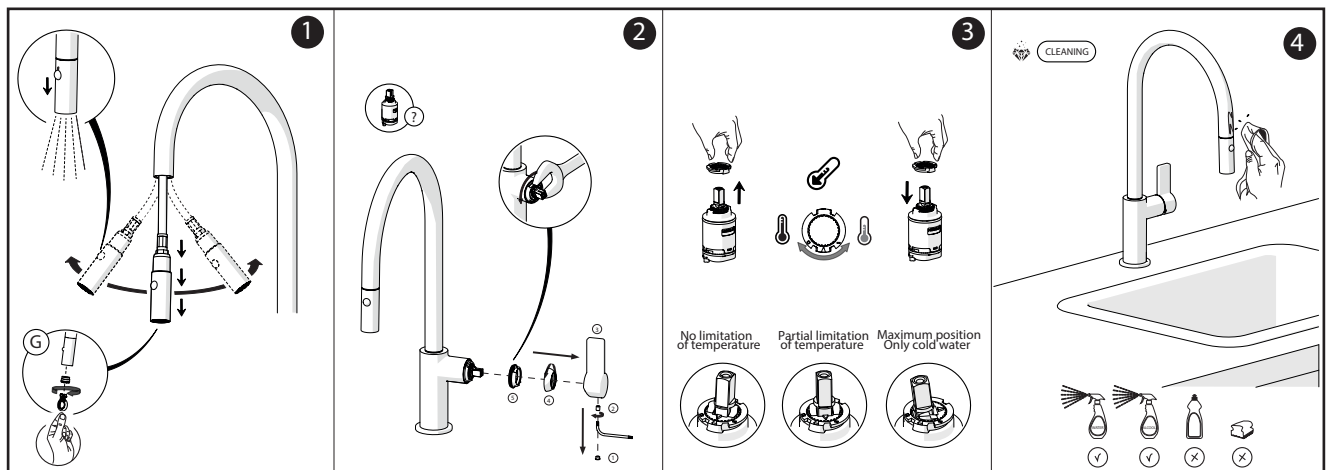
INSTALLATION INSTRUCTIONS

Important Note

Mixer must be installed to the requirements of AS/NZS 3500 by a qualified plumber. Your mixer comes to you already factory assembled and tested. We do not recommend the dismantling of any internal part of the mixer. The mixers are factory tested and sealed so as to give the best performance.



SERVICING-REPLACEMENT OF CARTRIDGE

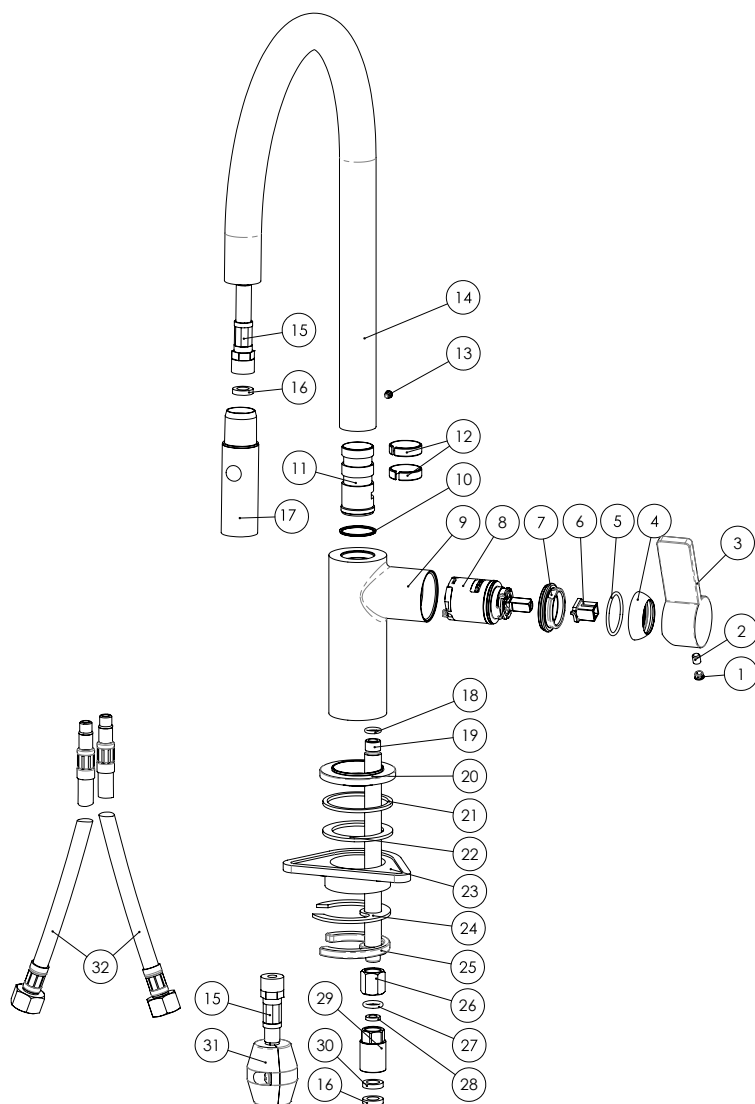


Plumbers, please ensure a copy of the installation instructions is left with the end user for future reference

Published 04//03/2021

Nobili Flag Pull Out Sink Mixer Chrome (4 Star)

EXPLODED VIEW



Item	Description
1	Chrome Cover
2	Grub Screw
3	Mixer Handle
4	Cartridge Dome
5	O Ring
6	Thermal Barrier
7	Cartridge Lock Nut
8	Cartridge
9	Mixer Body
10	Friction Ring
11	Outlet Connection Assembly
12	Locating Rings
13	Grub Screw
14	Spout
15	Hose
16	Washer
17	Handpiece
18	O Ring
19	Fixing Rod Thread
20	Dress Ring
21	Rubber Gasket
22	Rubber Sealing Washer
23	Stabalising Plate
24	Rubber Seal
25	Horse Shoe Plate
26	Hex Nut
27	O Ring
28	Seal
29	Hose Adaptor
30	Fibre Gasket
31	Weight
32	Flexible Hoses