

Lussi Wall Hung Vanity

Pre-Installation Checks

Please take time to read and perform these checks before proceeding to the installation instructions.

This product must be installed by a qualified trades person in a professional manner.

All Kado Lussi cabinet drawers are fitted and adjusted before being distributed. It is the responsibility of the installer to make any necessary adjustments to door/drawers after installation.

Caution: When lifting or installing heavy items always seek assistance, never attempt to lift or maneuver alone. Always follow safe practices and use personal protective equipment (PPE).

1. Inspect all items upon delivery.

If you believe there is a fault, damage, or the item is incorrect, contact the place of purchase immediately and do not proceed with installation. Proceeding with installation will immediately void warranty. The manufacturer will not be liable for installation or removal costs.

We allow 7 days from receipt of goods for notification of any discrepancies in goods received.

Once installed, no claims of damage will be accepted.

2. Ensure you have the appropriate equipment

You will need:

- Spirit Level
- Power Drill
- Bathroom Silicone
- Fixings

The installer is to determine and supply appropriate fixings for installation location, substrate and other environmental factors.

3. Read the specification documents of your basin and check for special plumbing or mounting requirements

Basin installation requirements vary between brand, manufacturer and style.

4. Test fit your basin onto vanity

5. Determine mounting position

Cabinets should be positioned at least 300mm from the closest wet area.

The materials used in the production of our cabinets are moisture resistant not water proof, excessive exposure to moisture will cause damage.

Cabinets should not be mounted in a corner or flush between two walls.

Always check for potential interferences between cabinet drawer and other fixtures and fittings such as doors, windows, switches, hardware, furniture etc.

6. Check that your wall is flat, level and square

The wall you are mounting to must be flat level and square from floor to ceiling (vertically), and left to right (horizontally).

If necessary use packers to level cabinet and prevent twisting. If cabinet becomes twisted drawer alignment and function may be affected.

7. Make sure you have appropriate support

Your wall should have appropriate support beams (studs/noggins) to mount your cabinet to. Supports should run the entire length of the cabinet and be positioned according to the mounting information supplied in this document.

8. Test fit all plumbing components

Test fit all plumbing components from basin to waste point at wall and check for any interferences with internal cabinet components before continuing.

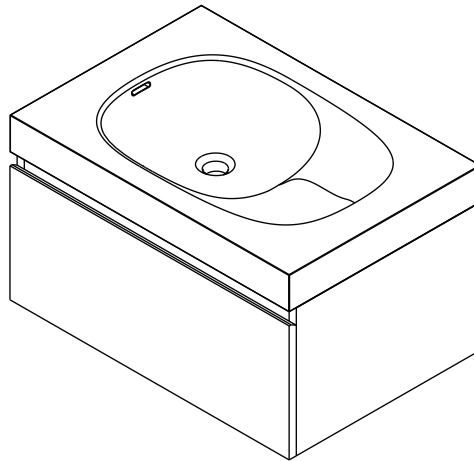
**FAILURE TO ADHERE TO THE ABOVE PREPARATION OR INSTALLATION INSTRUCTIONS
WILL VOID YOUR WARRANTY**

Lussi Wall Hung Vanity

ASSEMBLY LIST

Kado Lussi basin

Kado Lussi cabinet



LUSSI CABINET INSTALLATION INSTRUCTIONS

NO claims for damages / defects will be recognised after installation.

Prior to installation it is important to unpack and inspect your products to ensure no damage has occurred in transit and that the product IS CORRECT. If damage has occurred, or a visible defect exists, do not proceed with installation and contact supplier IMMEDIATELY.

Lussi cabinets are not designed to be positioned in a corner or flush between two walls. If this is unavoidable the installer is to determine appropriate distance from adjacent wall.

Read all instructions beforehand, pay particular attention to locations of plumbing, fixing locations and measuring up of these.

IMPORTANT

Basin must be mounted to wall before cabinet. If basin is not installed return to Lussi basin installation instructions. Plumbing components should not be connected until after cabinet is installed.

Step 1. Check that your wall is flat, level and square. The wall you are mounting to must be flat level and square from floor to ceiling (vertically), and left to right (horizontally). If necessary use packers to level cabinet and prevent twisting. If cabinet becomes twisted drawer/door alignment and function maybe affected.

Step 2. If applicable, remove drawer/s from cabinet before installation.

a) Squeeze large handles on locking devices. See **Figure 1**.

b) Pull drawer straight out and up at a slight angle.

Place drawer/s carefully on blanket to protect. Once installation begins, any damage including scratches, chips to paint work etc. are not covered by warranty.

- Drawer component appearance may vary from illustration

- Drawer installation and operation are tested and adjusted before leaving the factory,

all further adjustment required after installation it is the responsibility of the licensed installer. See Figures 5 & 6

Plumbers, please ensure a copy of the installation instructions is left with the end user for future reference

Lussi Wall Hung Vanity

LUSSI CABINET INSTALLATION INSTRUCTIONS

Step 3. Rough in plumbing from wall according to basin configuration i.e. left / right / centre / double. For dimensions of cabinet rear cut-out see **Figure 2**. Refer to basin installation guide for basin waste and tap hole locations. **IMPORTANT:** If drawers are to be installed plumbing must be located centred to drawer plumbing location indicated in **Figure 2**. Ensure that basin and plumbing components are temporarily assembled to cabinet first to determine exact vertical and horizontal plumbing out position at wall. Also assemble and check drawer clearance to trap.

Step 4. Align cabinet directly under the already installed Lussi basin. Note: Often cabinets are made slightly smaller than the vanities so the basin can overhang the cabinet sides. Ensure your basin is centred to the cabinet when installing.

Step 5. Using appropriate fixings¹, secure cabinet to wall through back panel at locations shown in **Figure 4**, ensuring cabinet is level and at the appropriate height. **IMPORTANT:** Before fixing through back panel look for any potential interference with existing fixings used during construction of cabinet. As a minimum, use fixings at all corners, and top and bottom centres. All fixings must be secured to wall framing (studs/noggins) and shouldn't be more than 300mm apart. See **Figure 3**. Use additional fixings if required. **'It is the responsibility of the installer to select appropriate fixing materials for the substrate and environment.'**

Figure 1.

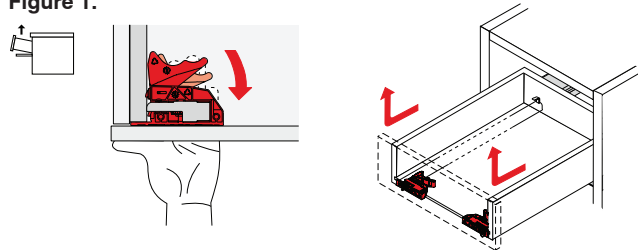
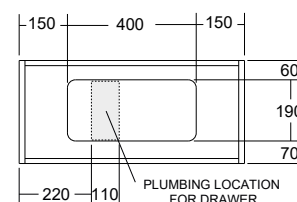


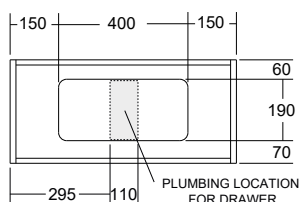
Figure 2.

Drawings show cabinets suitable for left hand and double basins. For cabinets with right hand basins reverse the below drawing

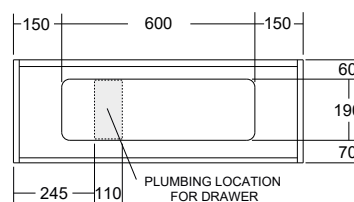
700 Cabinet - LH Bowl



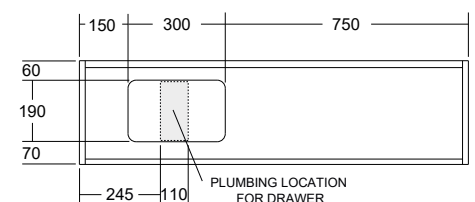
700 Cabinet - CNT Bowl



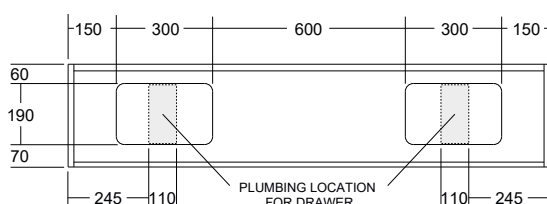
900 Cabinet - LH Bowl



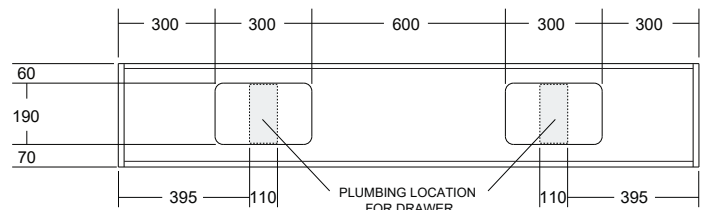
1200 Cabinet - LH Bowl



1500 Cabinet - All Locations



1800 Cabinet - DBL



Plumbers, please ensure a copy of the installation instructions is left with the end user for future reference

Lussi Wall Hung Vanity

LUSSI CABINET INSTALLATION INSTRUCTIONS

Step 6. Once cabinet is safely secured to wall complete all plumbing connections between basin and outlet².

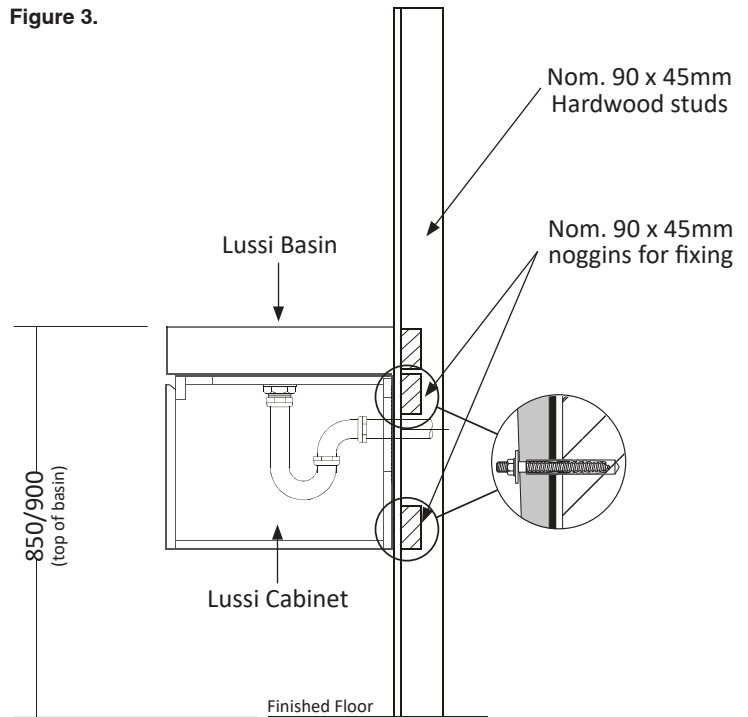
²Plumbing components supplied separately.
IMPORTANT:

³It's the responsibility of the installer to create a water tight seal between the basin and the waste. It is also the responsibility of the installer to take appropriate precautions to prevent water penetrating the cabinet. Supplier will not be held responsible for any damage that occurs to vanities due to; incorrect installation; water seepage or leaks.

Step 7. Re-insert drawer and adjust as required. See **Figures 5 & 6.**

IMPORTANT: IT IS THE RESPONSIBILITY OF THE INSTALLER TO MAKE ANY NECESSARY ADJUSTMENTS TO THE DOOR/DRAWERS AFTER INSTALLATION.

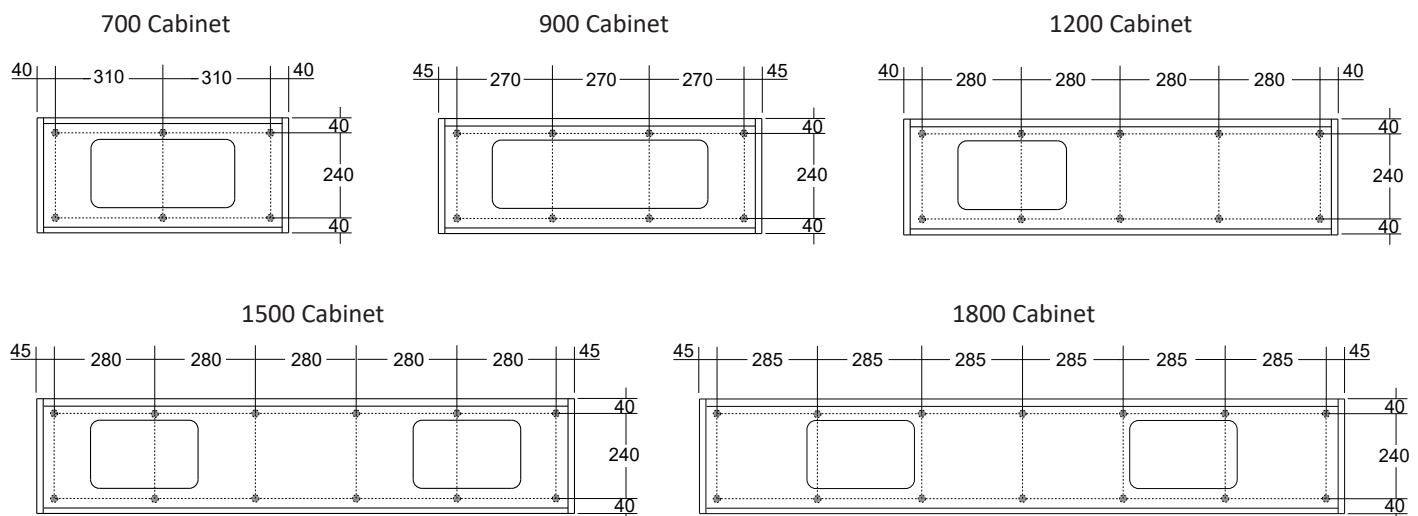
Figure 3.



Step 8. Clean any dust and building residue from the cabinet. It is important to ensure drawer runners are free of any debris as this can damage and effect the operation.

Figure 4.

Dimensions are to be used as a guide only. Always measure, mark out and check for potential interference with existing fixings used during construction of cabinet before drilling. All fixings must be secured to wall framing and shouldn't be more than 300mm apart.

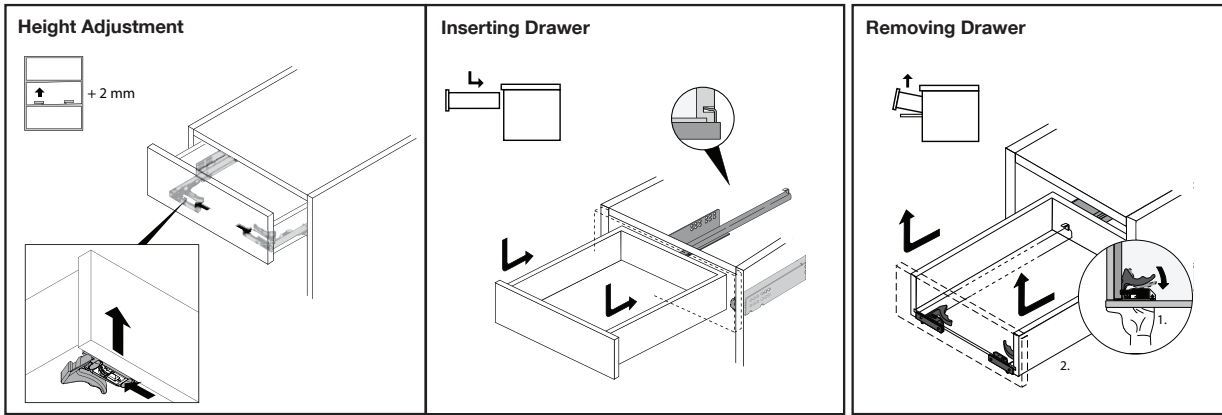


Plumbers, please ensure a copy of the installation instructions is left with the end user for future reference

Lussi Wall Hung Vanity

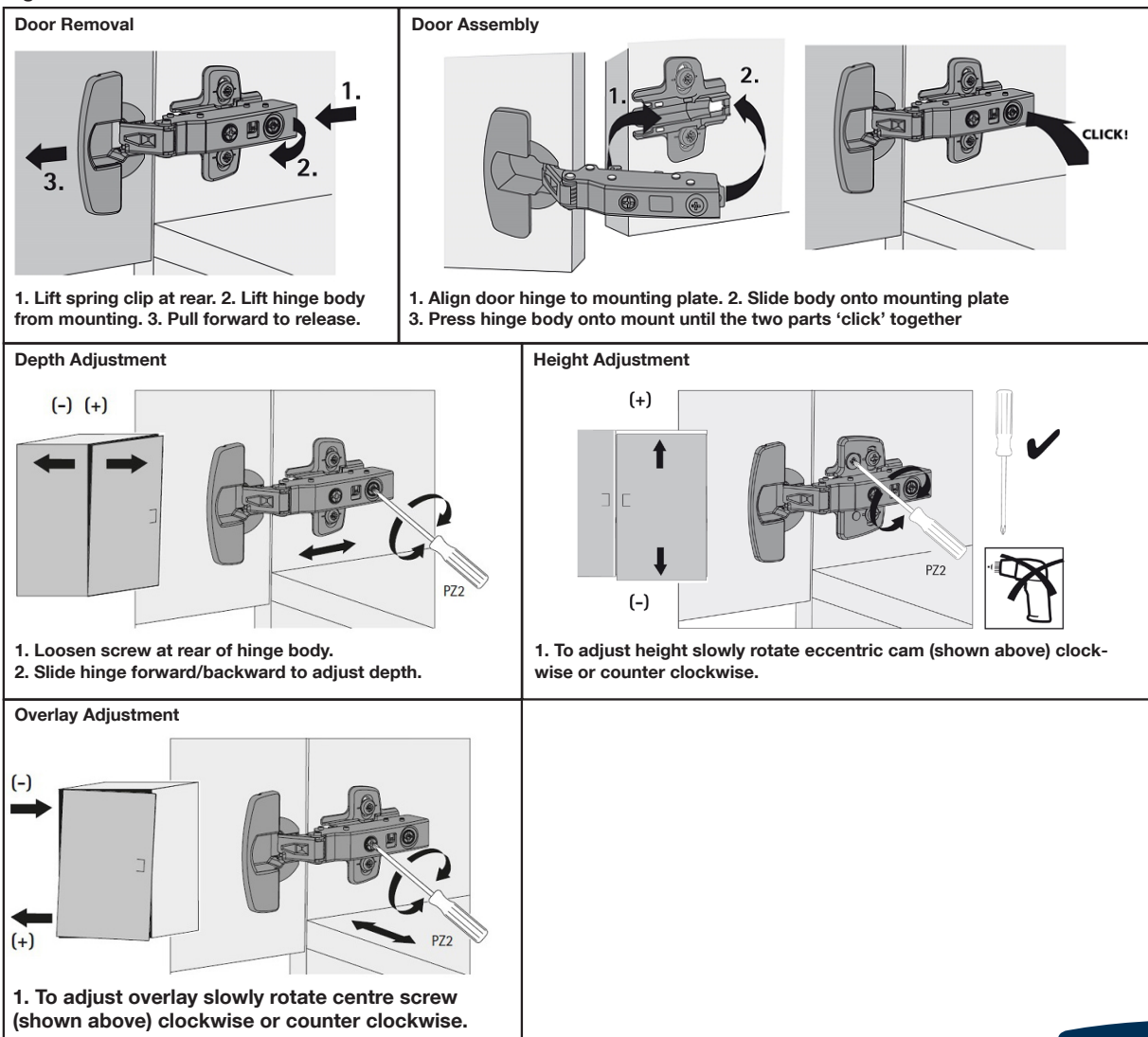
LUSSI DRAWER ADJUSTMENT AND REMOVAL INSTRUCTIONS

Figure 5.



LUSSI HINGED DOOR ADJUSTMENT AND REMOVAL INSTRUCTIONS

Figure 6.



Plumbers, please ensure a copy of the installation instructions is left with the end user for future reference