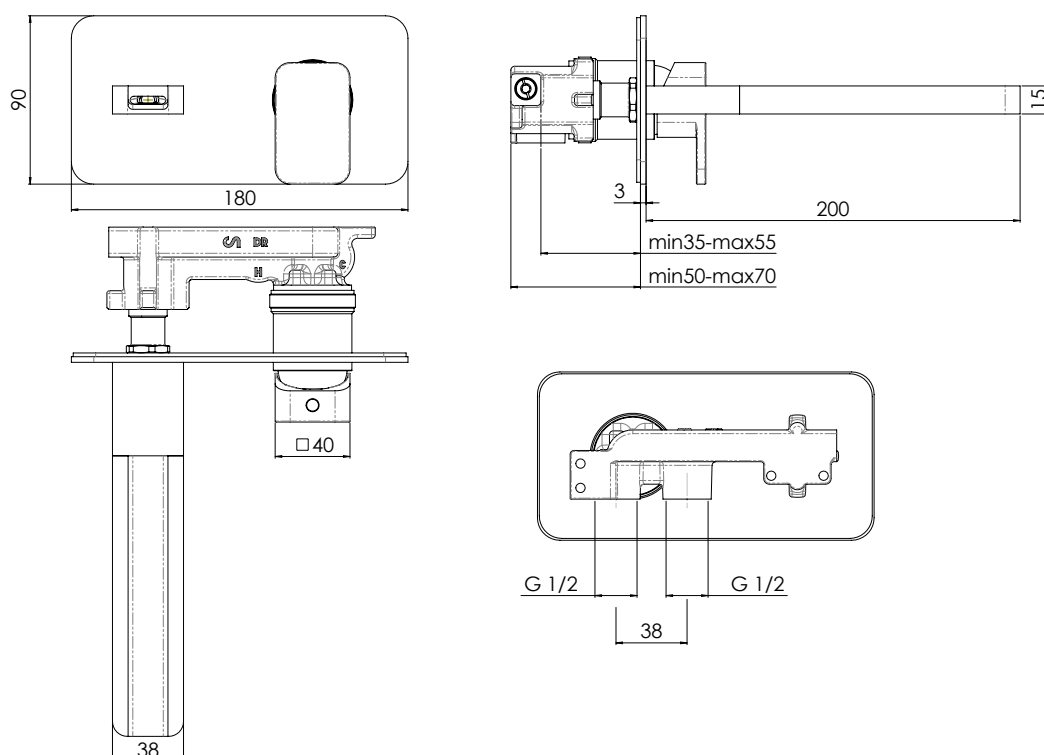


TEKNOBILI

LOOP CASCADE WALL BASIN MIXER SET



SPECIFICATIONS

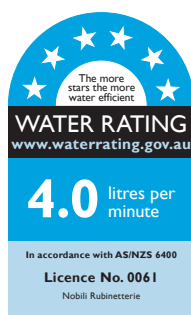
Recommended use	Domestic, hotel and commercial
Colour availability	Chrome
Pressure rating	Maximum continuous operating pressure 1000 kPa. Note: For best performance and longer life we recommend 150-500 kPa. Hot and cold water inlet pressure should be equal.
Temperature rating	Maximum continuous working temperature 80°
Suitable Hot Water Units	Storage tank: Yes Continuous Flow: Yes Gravity Feed: Not recommended
WELS	Stars: 6 Flow rate: 4L/min
Standards	AS/NZS 3718



To see the complete Teknobili range go to www.reece.com.au/bathrooms

CLEANING RECOMMENDATIONS

We recommend the use of soapy water or approved cleaners.
This product should not be cleaned with abrasive materials.
Damage caused by any improper treatment is not covered by the product warranty - refer to Warranty Conditions.



AS/NZS 3718
WMKA 1400

Disclaimer: Products in this specification manual must by regulation be installed by licensed and registered trade people. The manufacturer/distributor reserves the right to vary specifications or delete models from their range without prior notification. Dimensions are nominal measurements only. Dimensions and set-outs listed are correct at time of publication however the manufacturer/distributor takes no responsibility for printing errors.

Tech Page Version 1

TEKNOBILI

reece

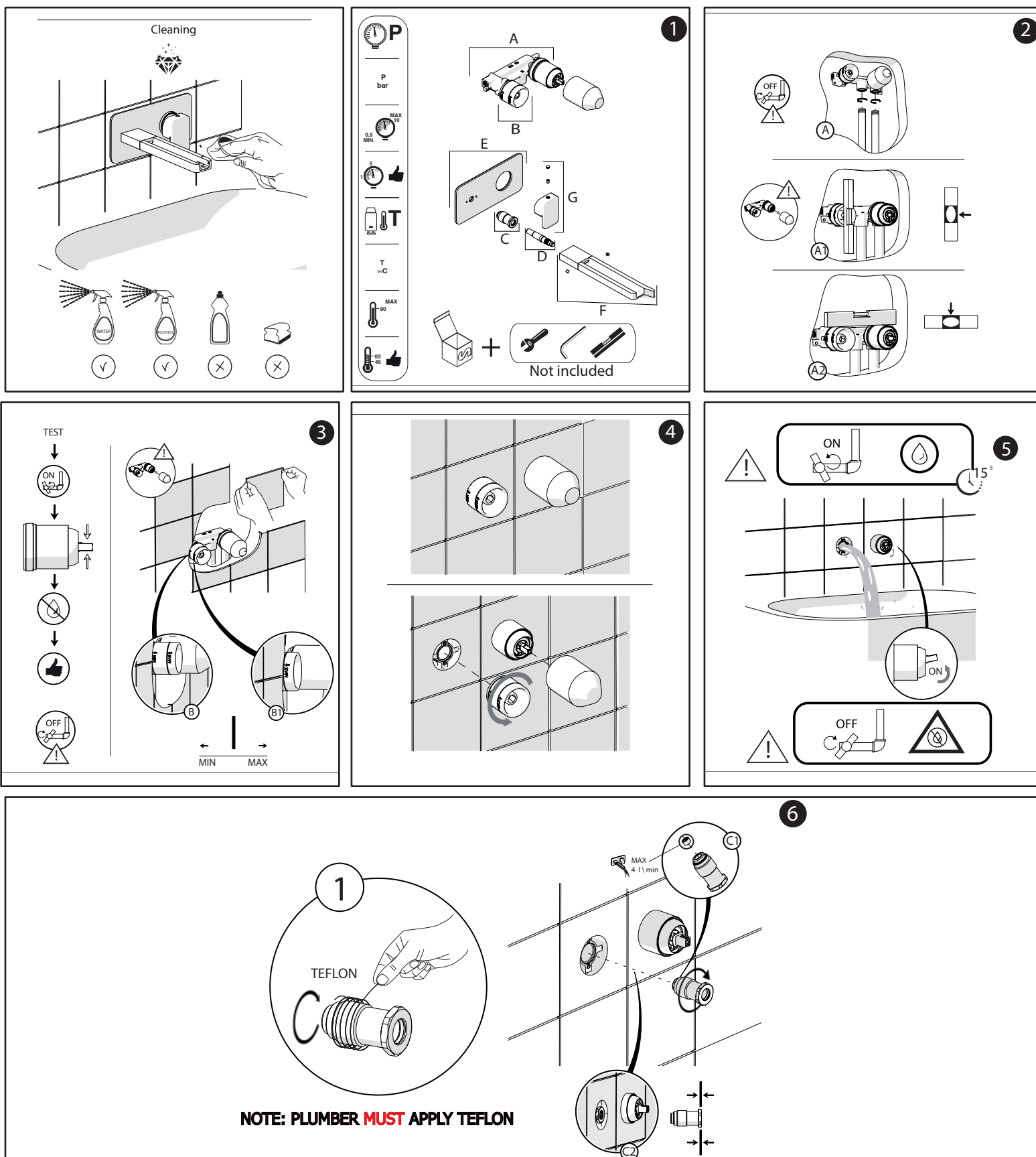
TEKNOBILI

LOOP CASCADE WALL BASIN MIXER SET

INSTALLATION INSTRUCTIONS

Important Note

Mixer must be installed by a qualified plumber. Your mixer comes to you already factory assembled and tested. We do not recommend the dismantling of any internal part of the mixer. The mixers are factory tested and sealed so as to give the best performance.



Plumbers, please ensure a copy of the installation instructions is left with the end user for future reference

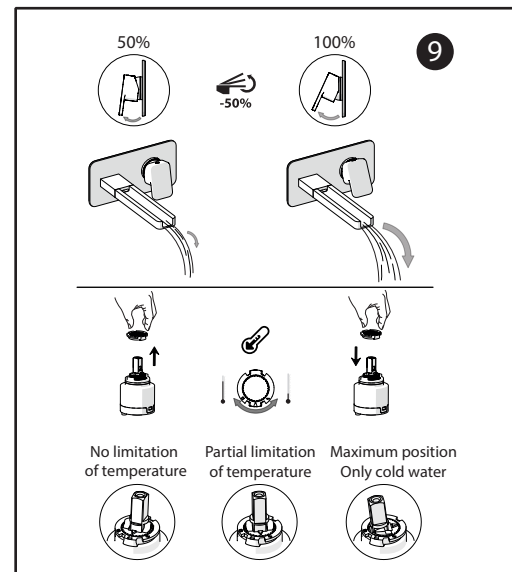
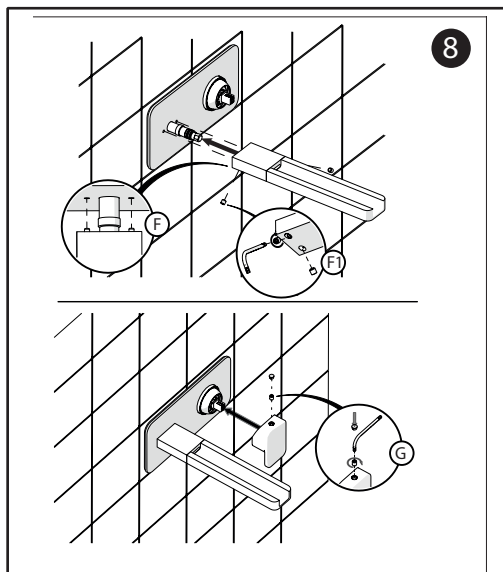
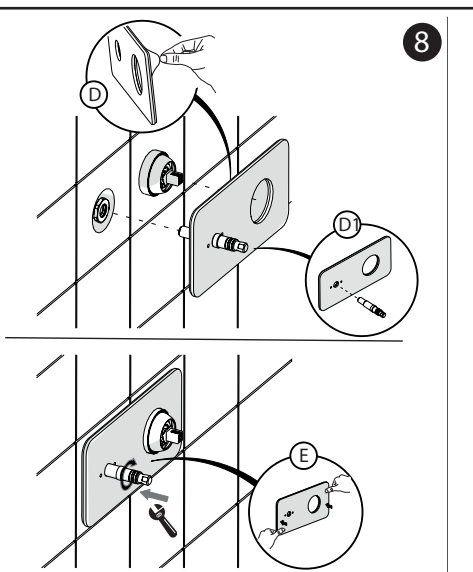
TEKNOBILI



reece

TEKNOBILI

LOOP CASCADE WALL BASIN MIXER SET



Plumbers, please ensure a copy of the installation instructions is left with the end user for future reference