



User's manual and installation

13

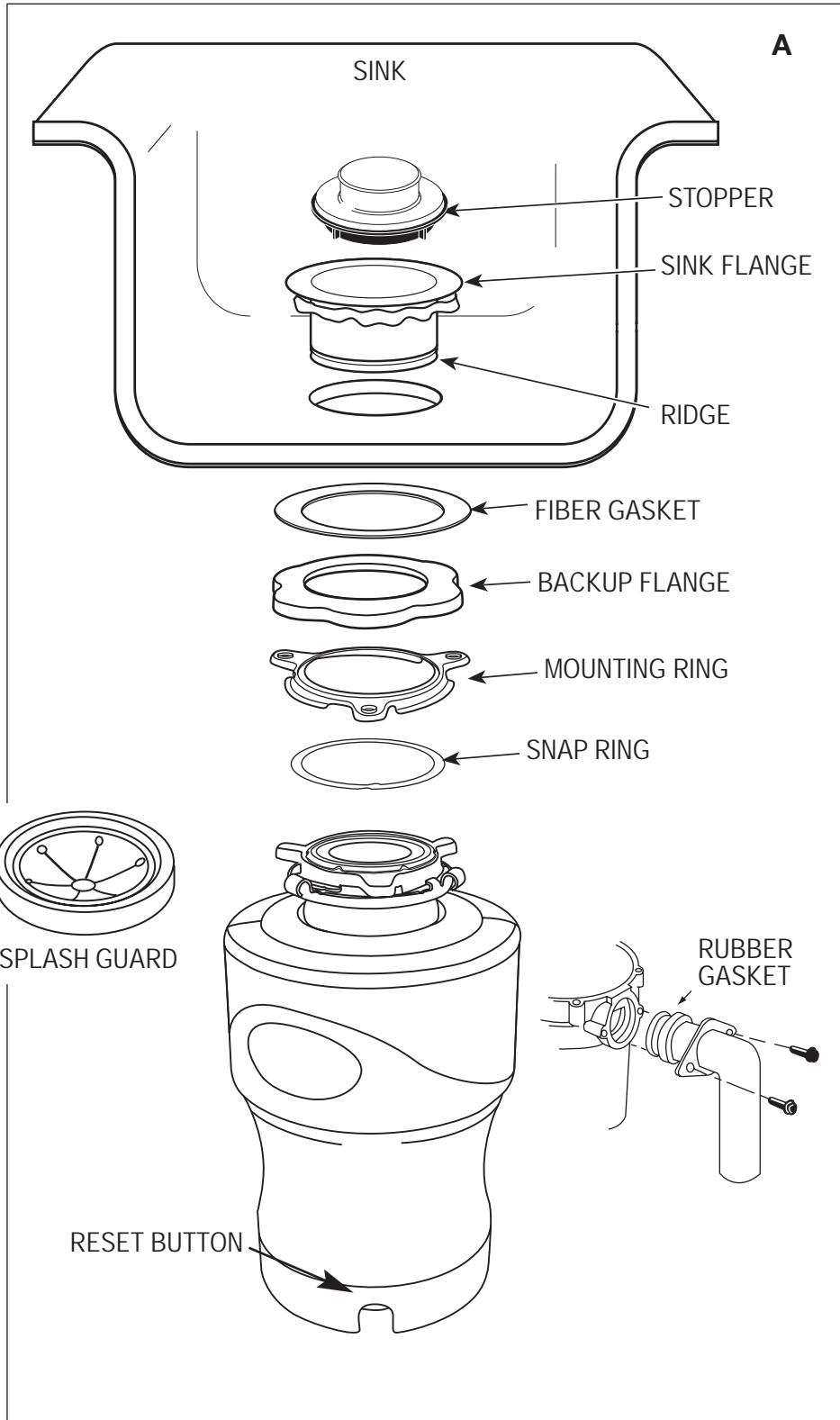
WD50R WD 75R FWD 75R



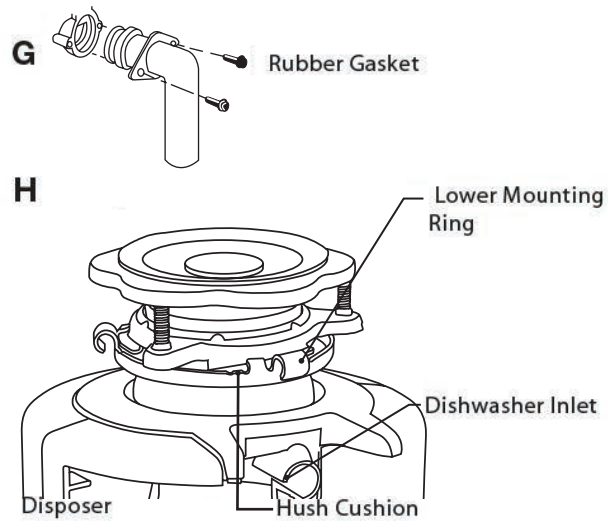
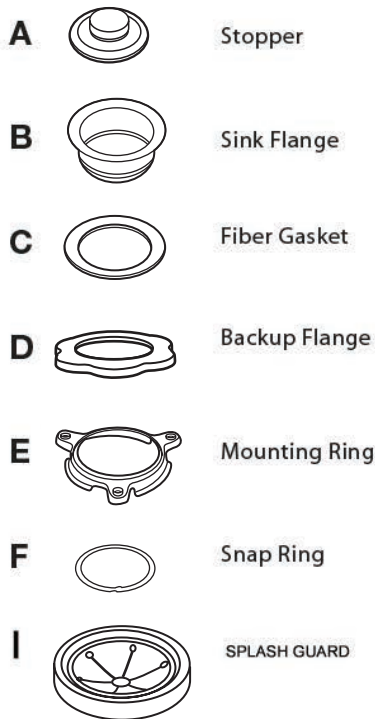
FOOD WASTE DISPOSER INSTALLATION INSTRUCTIONS

For specialized installers use only. The following instructions are for qualified installers to be all the operations in the most correct way according to the electrical and plumbing rules.

Assembly parts



INSTALLATION OF MOUNTING ASSEMBLY



NOTE: Hush Cushion included between mounting ring and lower mounting ring.

MOUNT SYSTEM

READ COMPLETELY BEFORE STARTING

NOTE: Pay close attention to the order of mount assembly parts, as they have been correctly assembled by the factory.

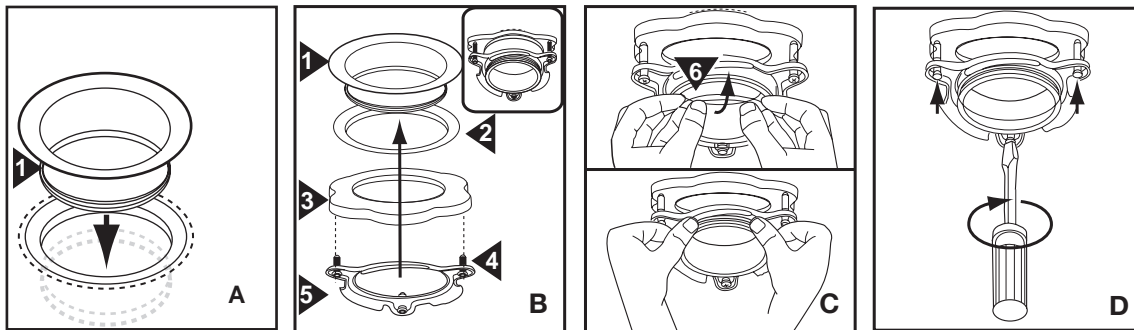
A. Disassemble the mounting assembly, as it has been shipped, by turning the sink flange assembly until the projections align with the notches in the lower mount ring and allow you to pull the sink flange up and out of the remaining lower mount assembly. Note the sequence of these parts as they are stacked to identify each part. Unscrew the 3 mount screws until the mounting ring can be moved to the top of the back up flange. Remove the snap ring with a screw driver.

B. Keep these assembled parts together and set aside. Before you connect the disposer to the mount assembly under the sink. Make sure the lower mounting is in place and the hush cushion is engaged properly to the top of the hopper.

C. Be sure your sink is clean. Pack the underside rim of the sink flange with plumber's putty. Position the sink flange so it is centered and readable as you look into your sink. Push the sink flange firmly into the sink opening to make a good seal. DO NOT move or rotate the sink flange once seated or the seal may be broken.

D. Take the remaining portion of the mount assembly, as it was set aside and make sure that the rubber gasket is on top of the protector ring. From under the sink, while holding the sink flange firmly with one hand, line up the notches in the mount ring with the projections of the sink flange. Slide the mount assembly up onto the sink flange, past the projections and give the mount assembly a 1/4 turn, so that it will hang by itself (see C).

E. Tighten the 3 mounting screws evenly with a screwdriver (see D). DO NOT OVERTIGHTEN! Trim off excess putty.



MOUNT SYSTEM

READ COMPLETELY BEFORE STARTING NOTE: Pay close attention to the order of mount assembly parts, as they have been correctly assembled by the factory.

- A. Press flange (1) firmly into sink drain. Remove excess putty.
- B. Insert fiber gasket (2), backup flange (3) and mounting ring (5). Hold in place while inserting snap ring (6).
- C. Place a weight such as the disposer on the sink flange to hold it in place. Use a towel to prevent scratching sink. Pull snap ring open and press firmly until it snaps into place.
- D. Tighten the 1½" screws (3) evenly and firmly against backup flange. Use shorter screws if sink is more than 3/8" thick.

Plumbing Connection

Place the disposer siphon elbow connection with the tube flange using the given screw. Connect the garbage disposer siphon elbow connection and tighten it to the drain trap. To avoid problems, before connecting the plumbs, control the tubes and clean them if needed. (SEE FIG 1)

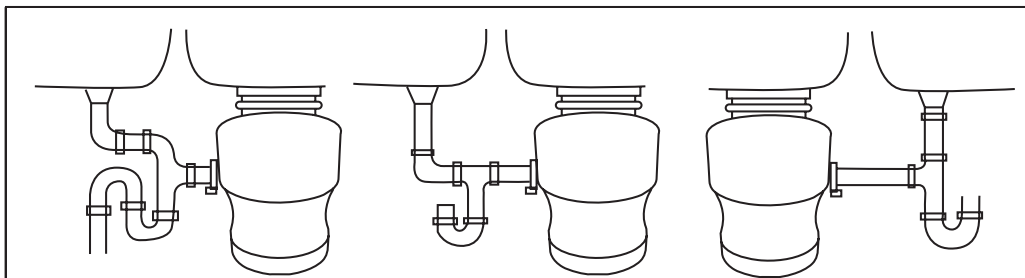
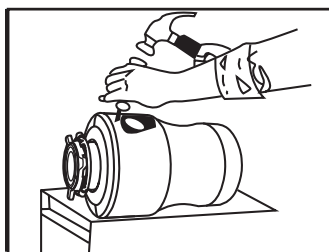


Fig. 1

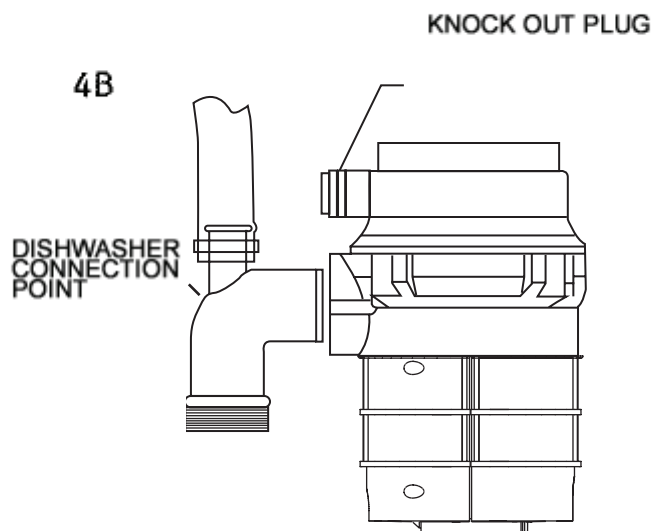


To set in function the overflow pipe connection, please remove the closure as illustrated.

Attaching Discharge Elbow -Overflow/Appliance Connections

For overflow or dishwasher connections, complete the following procedure:

Using a blunt instrument (steel punch or wooden dowel), knock out the barrier of the dishwasher connection on the discharge elbow. Do not use a screwdriver or sharp instrument. Ensure that the barrier is removed completely from the pipe. This may be done with dishwasher elbow installed to the disposer or prior to installation.



Connect overflow or hose using hose clamp. If hose size is different, you need a stepped rubber adaptor.

Electrical Connection



All the modes are made to function with 220-240V/50-60 Hz. Pay attention that the tension is included in these values.

Grounding instructions for cable connected unit

It is better to put between the unit and the electrical plant a bipolar switch with minimum nominal flow of 10A according to the required rules. The yellow/green cable does not have to be interrupted by the switch.

Before doing the connection, please check:

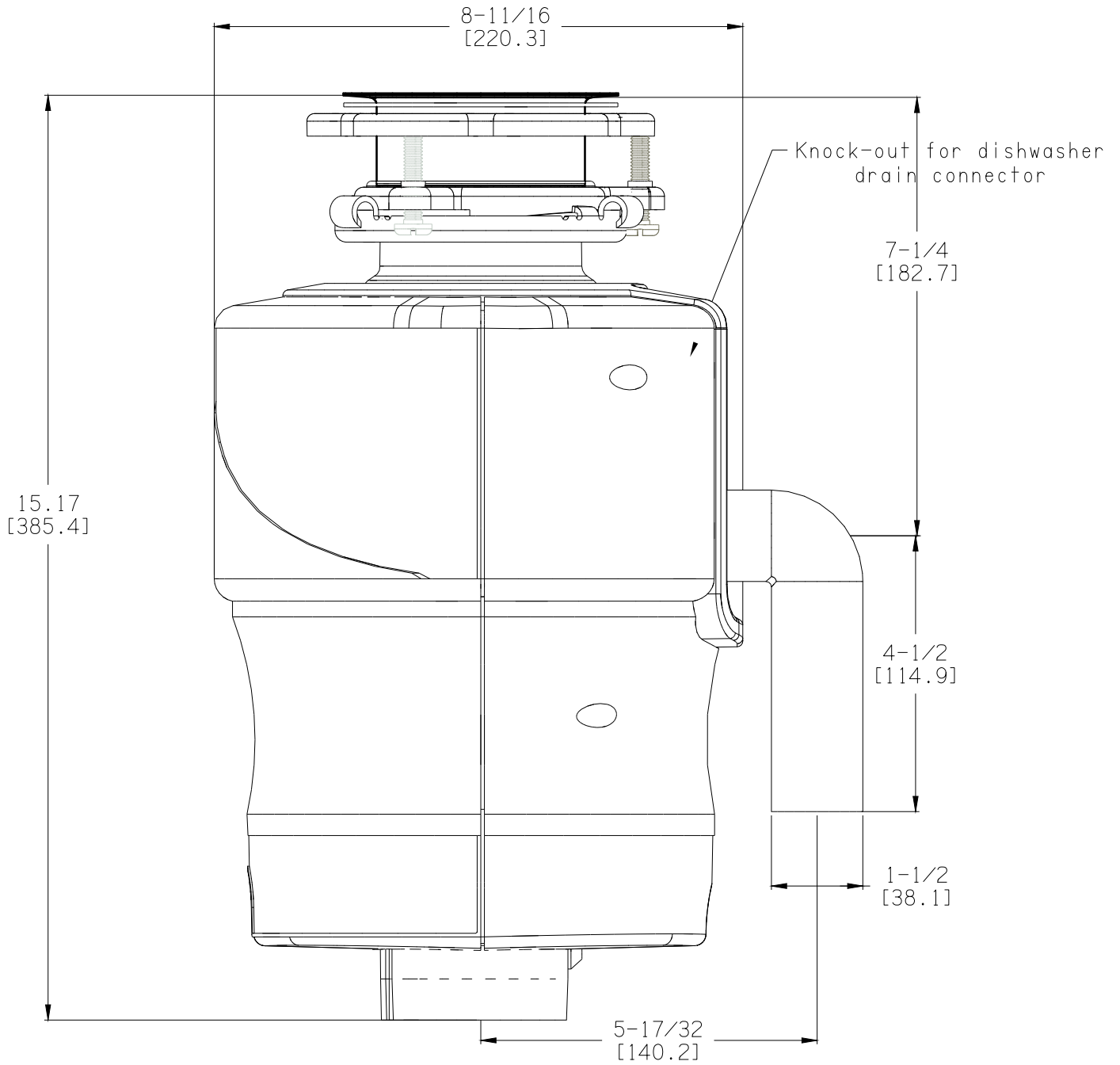
That the electrical feeding plant has a good ground connection according to the rules required by the law.

That the plug and the bipolar switch used in the connection are easily reachable with the installed unit and out of children's reach.

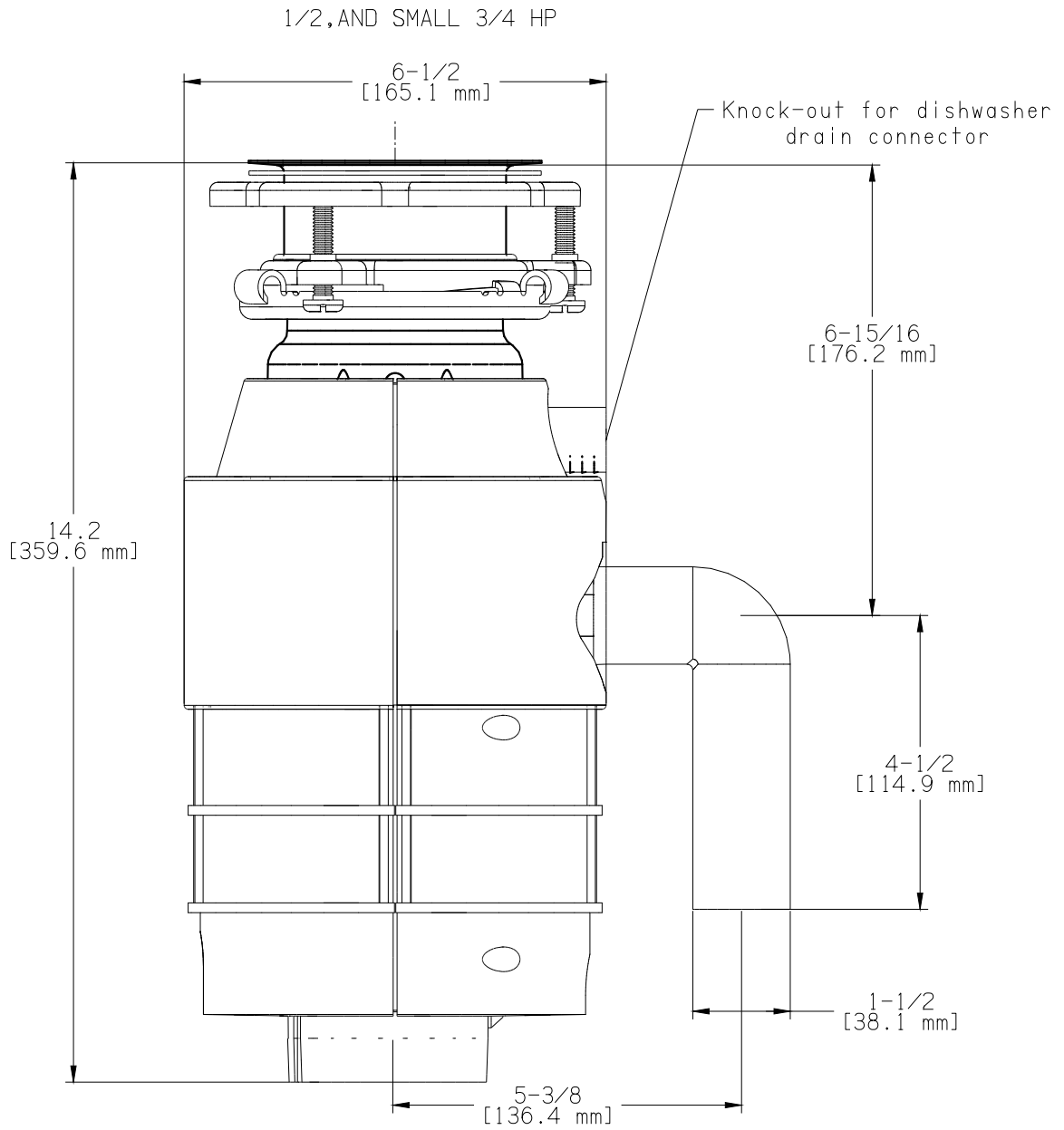
In the electrical plant there has to be a differential switch with nominal value 10A/0,03A for the protection against indirect contacts (life saver).

**WE DECLINE EVERY KIND OF RESPONSIBILITY WHEN ACCIDENT-PREVENTION
RULES ARE NOT RESPECTED**

FWD75R



WD50R - WD75R



OPERATING INSTRUCTIONS

A. Remove sink stopper. Turn on a medium flow of cold water.

B. Turn switch to ON position; your motor is turning at full speed and ready to use.

C. Scrape in food waste. Down the drain go table scraps, peelings, rinds, seeds, pits, small bones and coffee grounds. To speed up food waste disposal, cut or break up large bones, rinds and cobs. Large bones and fibrous husks require considerable grinding time and are more easily thrown away with other trash. Do not be alarmed that the disposer slows down while grinding. The disposer is actually increasing torque (grinding power) and is operating under normal conditions.

D. Before turning disposer off, let water and disposer run for approximately 15 seconds after shredding stops. This assures that all waste is thoroughly flushed through trap and drain.

E. It is not recommended to use hot water while running disposer. Cold water will keep waste and fats solid so disposer can flush away particles.

CAUTION

Use only cold water.

Make sure that the authorities permit the installation of the waste disposer.

Use the garbage disposer only for food waste.

Do not use the food waste disposer with hard materials like glass or metal.

Turn the machine off or unplug it while trying to unblock a blocked grinding wheel with alcohol.

It is suggested to use regularly the "FRABIO" hygienizer.

DO NOT put inside :

Lye and drain cleaning chemicals (Hydrochloric and muriatic acid), as they cause serious corrosion of metal parts . If used, resulting damage can be easily detected and all warranties are void.

Fat and oil in excess.

Plastic materials.

Pumpkins

Banana peels

Leaves of pineapple

Asparagus

Artichokes

Shell (es. oyster, mussel, ecc.)

Medicine

Metal (bottle top)

Plastic pieces

Cow bone a/o gross dimension

TO BE put inside:

Corn cobs

Little bones (es. bone of chicken, rabbit)

Nut shells

Meat scraps

Peel of melon, watermelon

Seeds of fruits

Acinus of grape

Grain of rice

Grain of coffee

Shell of eggs

Fishbone

Head of fish

Pasta

Vegetables or peel of vegetables

Cheese

Bread

Soup

TROUBLESHOOTING

Before seeking repair or replacement, we recommend that you review the following:

LOUD NOISES: (Other than those during grinding of small bones and fruit pits): These are usually caused by accidental entry of a spoon, bottle cap or other foreign object. To correct this, turn off electrical switch and water. After disposer has stopped.

UNIT DOES NOT START: Unplug power cord or turn either the wall switch or breaker box switch to "OFF" position, depending on your model and wiring configuration.

Remove stopper. Check to see if turntable will rotate freely using a wooden broom handle. If turntable rotates freely, replace *splash guard and check re-set button to see if it has been tripped. Re-set button is red and located opposite discharge elbow, near the bottom (see A). Push button in until it clicks and remains depressed. If re-set button has not been tripped, check for shorted or broken wire connecting to disposer. Check electrical power switch, fuse box or circuit breaker. If wiring and electrical components are intact, the unit may have internal problems that require service or replacement.

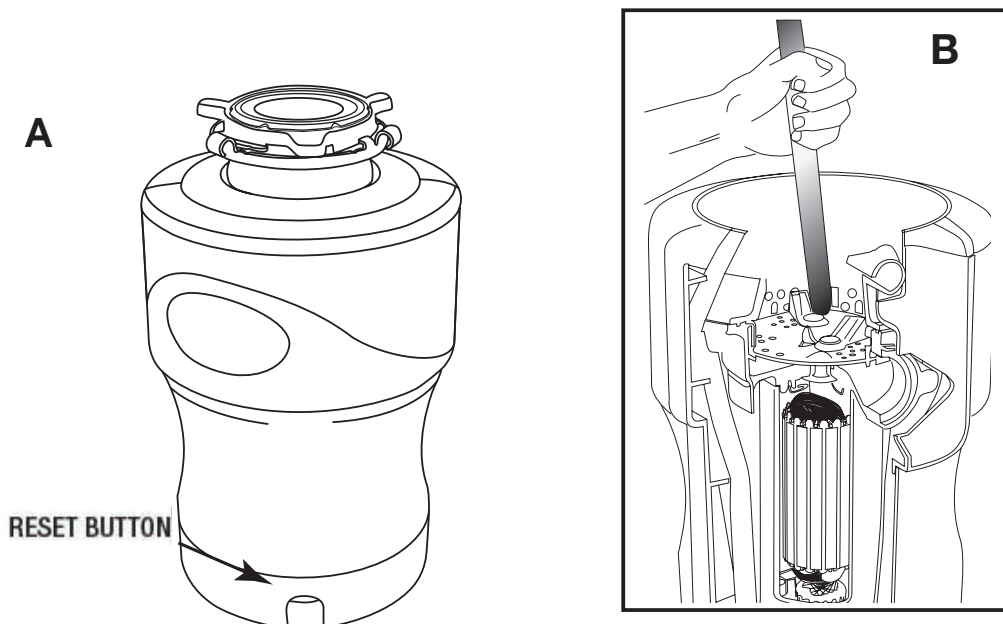
IF TURNTABLE DOES NOT ROTATE FREELY: Turn off disposer, then check for any foreign object lodged between the turntable and grind ring. Dislodge object by rotating table with a wooden broom handle and remove object. (see B) If no foreign object is present, there may be internal problems.

LEAKS: If the unit leaks at the top, it may be due to:

Improper seating of sink flange (gasket centering, putty or tightening).

Support ring not tightened properly.

Defective or improperly installed cushion mount. If unit leaks at the waste elbow, leak may be due to improper tightening of elbow flange screws.



CLEANING AND MAINTENANCE



DO NOT ATTEMPT TO LUBRICATE YOUR DISPOSER!

The motor is permanently lubricated. The disposer is self cleaning and scours its internal parts with each use. NEVER put lye or chemical drain cleaners, as hydrochloric and muriatic acid, products for unclogging the sink drain, into the disposer, as they cause serious corrosion of metal parts.

If used, resulting damage can be easily detected and all warranties are void. Mineral deposits from your water can form on the stainless steel turntable, giving the appearance of rust. DO NOT be alarmed, the stainless steel turntables used will not corrode.

TECHNICAL DATA

	FWD75R TECH	WD 50R	WD75R
DIMENSIONS	384mm x 222mm	360mm x167mm	360mm x167mm
NET WEIGHT	6,05 KG	4,65 KG	4,65 KG
VOLTAGE	220/240 V	220/240 V	220/240 V
POWER HP	3/4HP	1/2HP	3/4HP
FREQUENCY	50	50	50
SPEED	2700 RPM	2600 RPM	2700 RPM
GRINDING TYPE	PERMANENT MAGNET	PERMANENT MAGNET	PERMANENT MAGNET
POWER MOTOR	520 W	475 W	520 W
PLUG TYPE		(

DISPOSER WARRANTY



FRANKE warrants the waste disposer to be free from any material and workmanship defects during the warranty period. The warranty starts from the purchasing date, signed on the accompanying document or on the cash voucher and it is valid as follows:

The warranty service can be denied if:

The disposer's defect depends on non-proper usage or installation. The disposer's defect depends from external factors. The disposer is used in a non-proper way and therefore not according to the suggested rules. The disposer has been modified or in some way transformed.

Used in a proper way your waste disposer will last for many years.

This product complies with the requirements of EU Directive 2002/96/EEC. The crossed-out wheeled bin symbol on the device indicates that the product must be disposed of separately from domestic waste at the end of its service life by being delivered to a sorted waste collection service for electrical and electronic equipment or returned to the retailer when buying a new device of the same kind.



The user is responsible for delivering the device to a sorted collection centre at the end of its service life; failure to do so is subject to the penalties provided by established legislation. Sorted waste collection is the first step in the recycling, treatment and disposal of waste in an environmentally compatible manner, and contributes to eliminating its potentially negative impact on the environment and health, as well as promoting recycling of the product's component materials. For more detailed information on available waste collection systems, contact your local waste disposal service or the retailer from whom you purchased the device.

The food waste disposer is for domestic use only.

