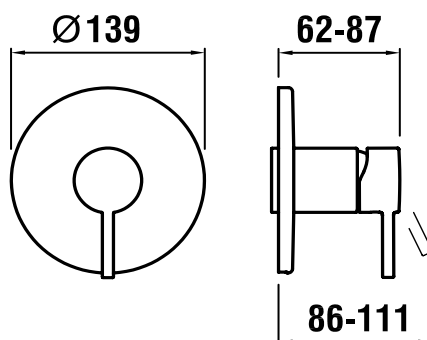


LAUFEN

TWINPLUS SHOWER/BATH MIXER



Dimensions are nominal measurements only.

SPECIFICATIONS

Recommended use	Domestic, Hotel and Commercial
Colour availability	Chrome
Pressure rating	<p>Maximum continuous operating pressure 1000kPa.</p> <p>As per AS/NZS3500 pressure must be limited to 500kPa on any new home, extension or renovation.</p> <p>For best performance and longer life we recommend 150-500kPa.</p> <p>Hot and cold water inlet pressure should be equal.</p>
Temperature rating	Maximum continuous working temperature 80°C
Suitable Hot Water Units	<p>Storage Tank: Yes</p> <p>Continuous Flow: Yes</p> <p>Gravity Feed: Not suitable</p>



To see the complete LAUFEN range go to www.reece.com.au/bathrooms

CLEANING RECOMMENDATIONS

We recommend the use of soapy water or approved cleaners.

This product should not be cleaned with abrasive materials.

Damage caused by any improper treatment is not covered by the product warranty. Refer to Warranty Conditions.

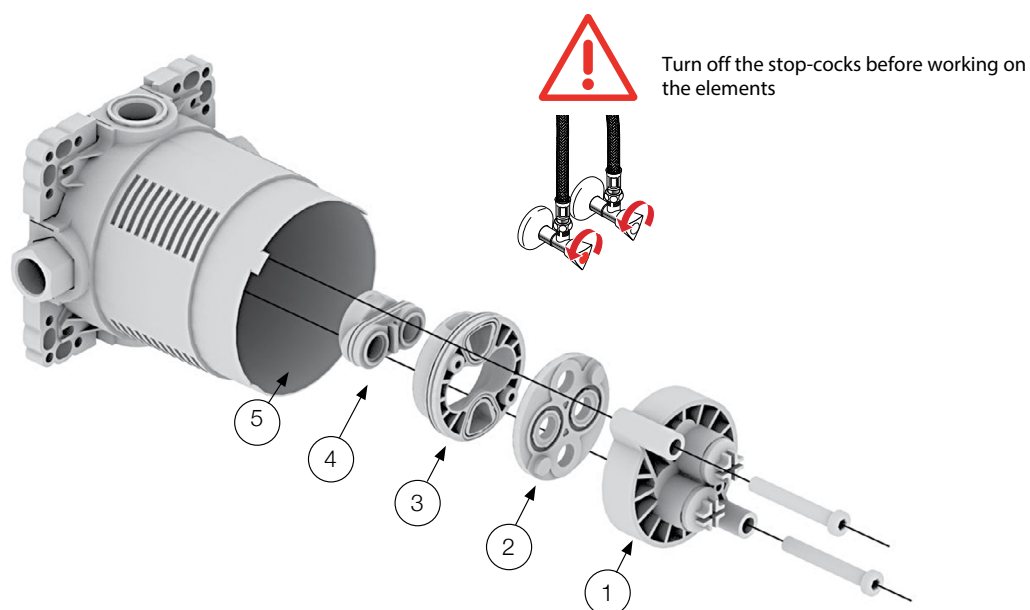
LAUFEN

TWIN PLUS SHOWER/BATH MIXER

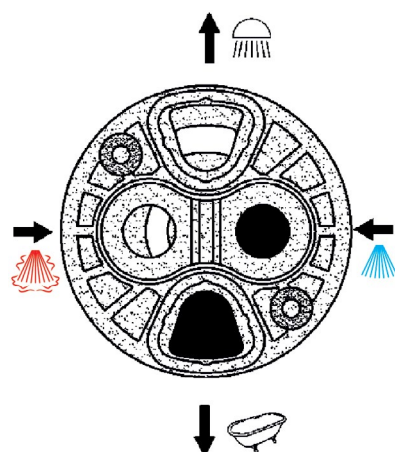
Important Note

Mixer must be installed to the requirements of AS/NZS 3500 by a qualified plumber. Your mixer comes to you already factory assembled and tested. We do not recommend the dismantling of any internal part of the mixer. The mixers are factory tested and sealed so as to give the best performance.

INSTALLATION INSTRUCTIONS



Input/Output inverters

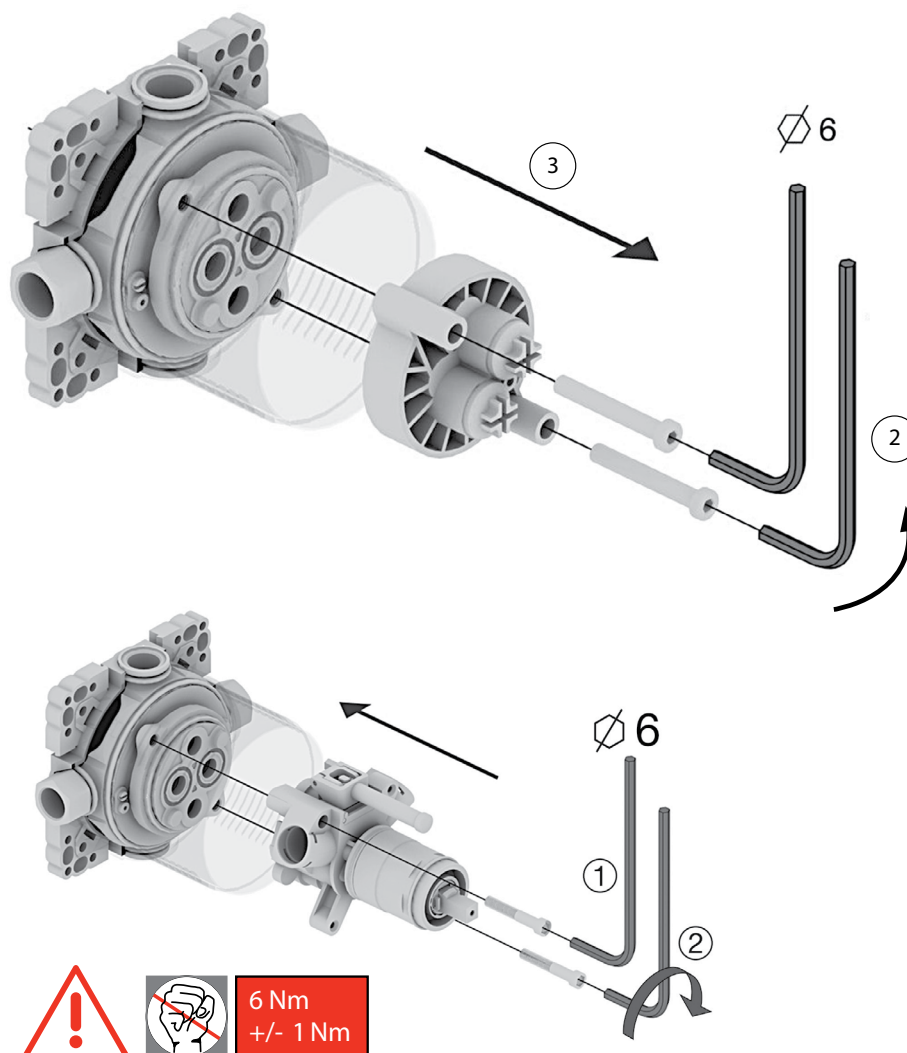


Factory setting

Plumbers, please ensure a copy of the installation instructions is left with the end user for future reference

LAUFEN

TWIN PLUS SHOWER/BATH MIXER



6 Nm
+/- 1 Nm

Tighten the 2 screws parallel (1 turn each side)
Check before installation that all seals are available and at the right place

LAUFEN

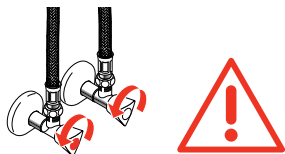
TWIN PLUS SHOWER/BATH MIXER



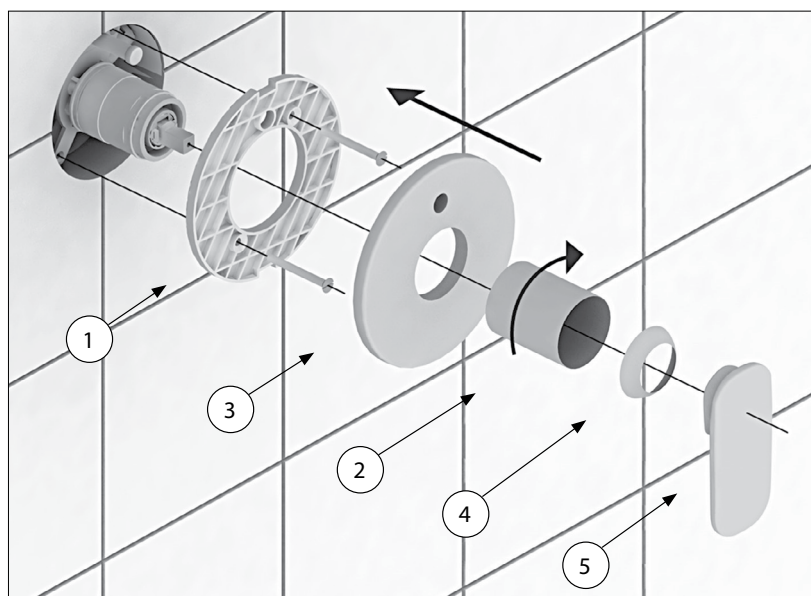
Examples of how to fit the decorative elements



Before installing the decor, open the valves and check for water tightness



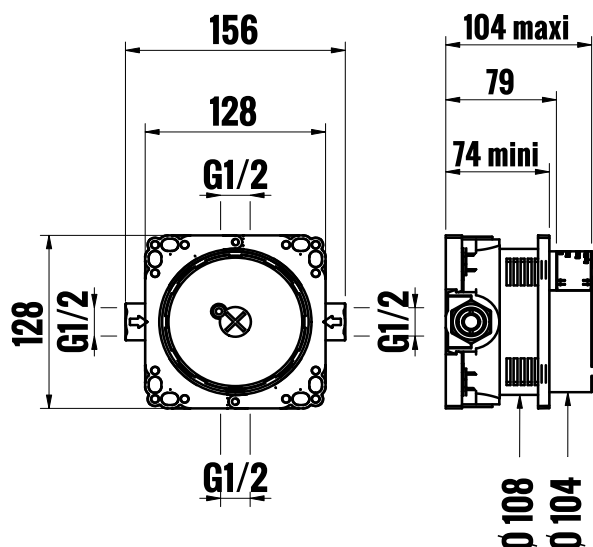
Only for Simibox Light **without** stop valves



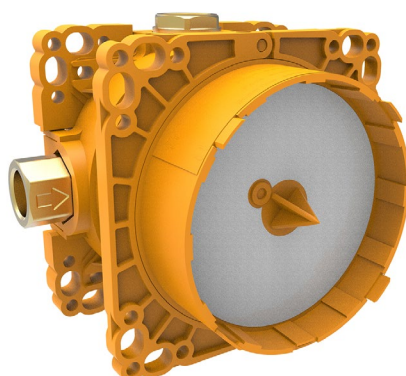
Plumbers, please ensure a copy of the installation instructions is left with the end user for future reference

LAUFEN

SIMIBOX LIGHT W/O SHUT-OFF



Dimensions are nominal measurements only.



To see the complete LAUFEN range go to
www.reece.com.au/bathrooms

CLEANING RECOMMENDATIONS

We recommend the use of soapy water or approved cleaners.

This product should not be cleaned with abrasive materials.

Damage caused by any improper treatment is not covered by the product warranty. Refer to Warranty Conditions.

LAUFEN

SIMIBOX LIGHT W/O SHUT-OFF

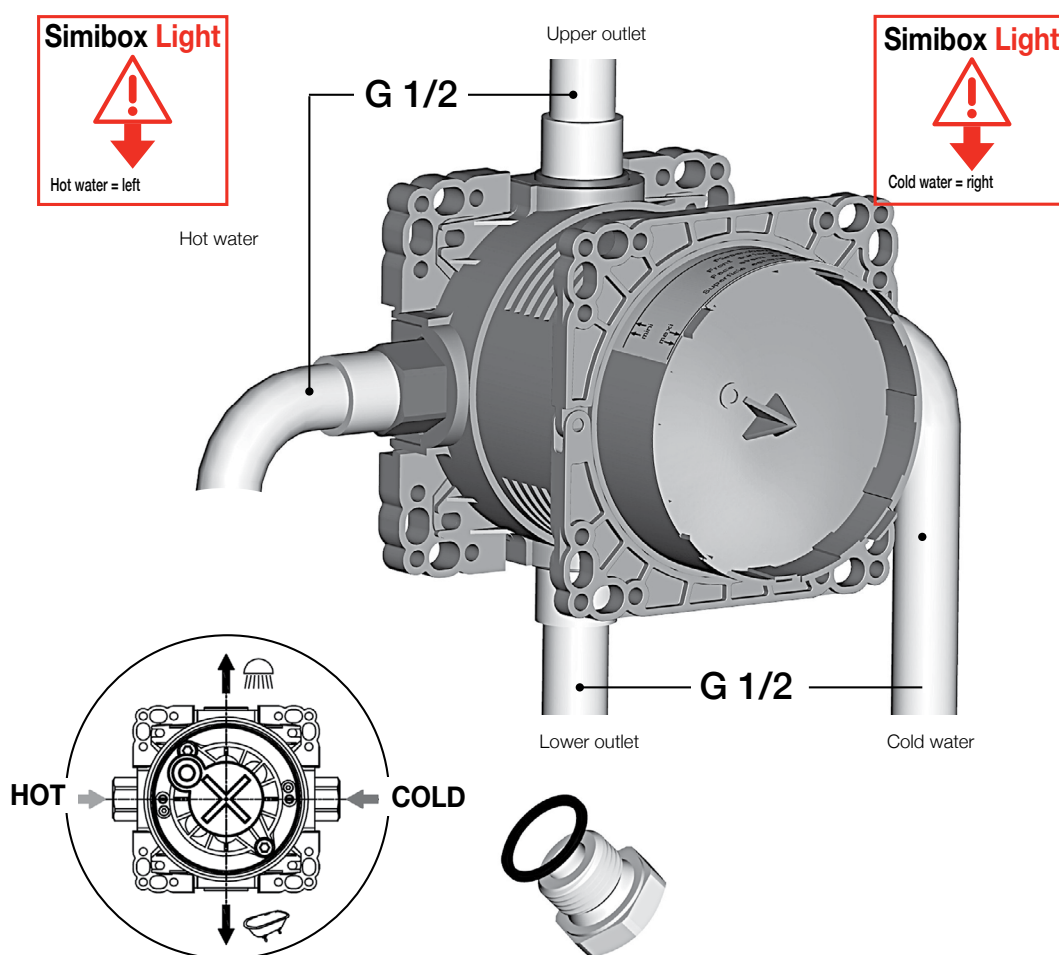
Important Note

Mixer must be installed to the requirements of AS/NZS 3500 by a qualified plumber. Your mixer comes to you already factory assembled and tested. We do not recommend the dismantling of any internal part of the mixer. The mixers are factory tested and sealed so as to give the best performance.

INSTALLATION INSTRUCTIONS



Connection to the water mains



To close off the unused outlet, fit the plug and check the seal.

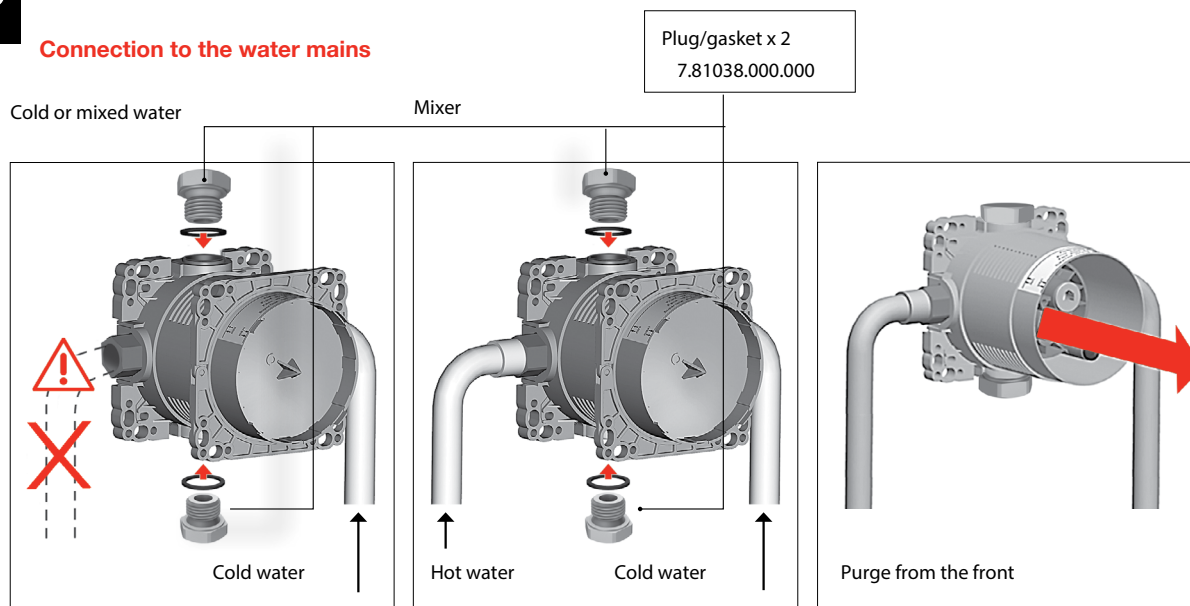
Plumbers, please ensure a copy of the installation instructions is left with the end user for future reference

LAUFEN

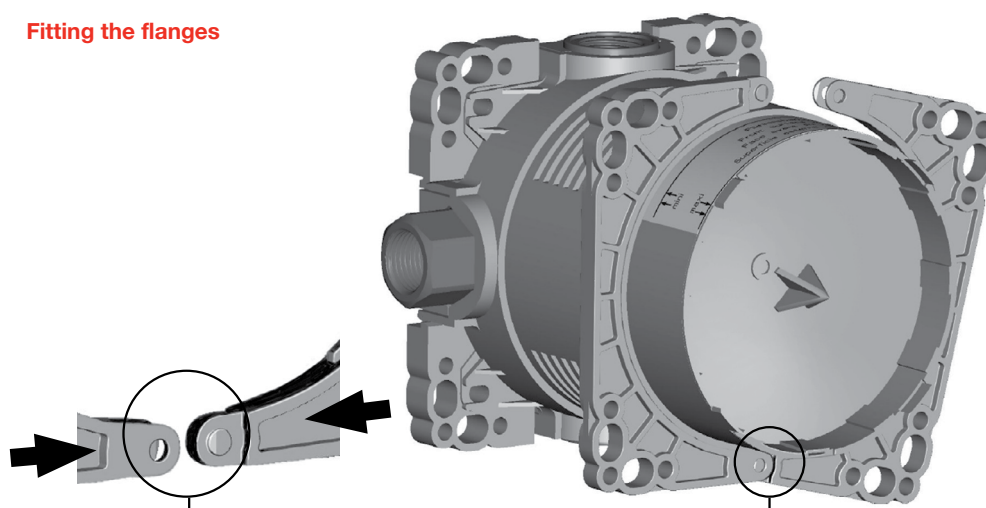
SIMIBOX LIGHT W/O SHUT-OFF



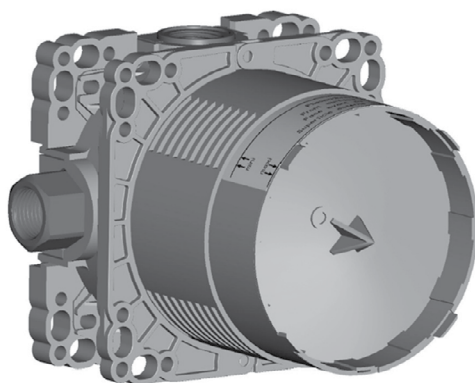
Connection to the water mains



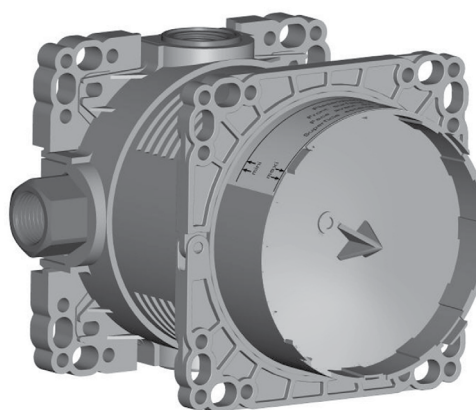
Fitting the flanges



Thick wall



Thin wall



The mounting flanges are adjustable according to the depth of the housing

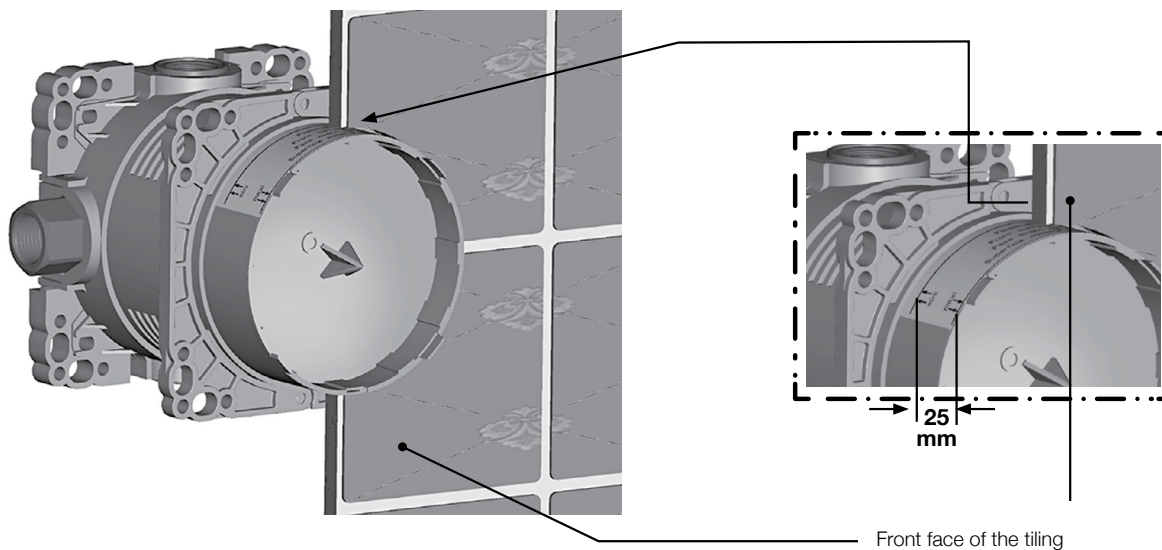
Plumbers, please ensure a copy of the installation instructions is left with the end user for future reference

LAUFEN

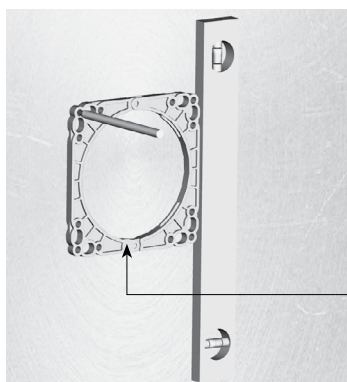
SIMIBOX LIGHT W/O SHUT-OFF



Pre-installation

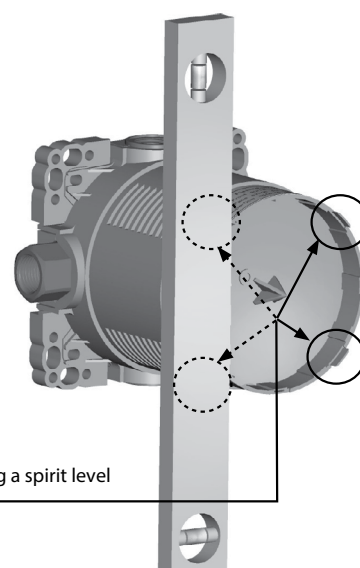


The front face of the tiling must lie between the min. and max. dimension shown on the label



Use the mounting flanges as drilling template

It is recommended to use at least 4 fixing points (\varnothing 5 screws) to fix the appliance into or onto the wall. For front wall installation, it is strongly recommended to use 8 x M5 screws



Position and align the built-in unit using a spirit level

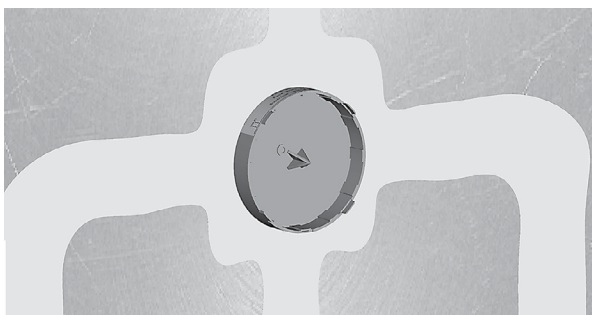
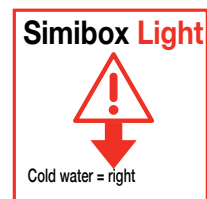
Plumbers, please ensure a copy of the installation instructions is left with the end user for future reference

LAUFEN

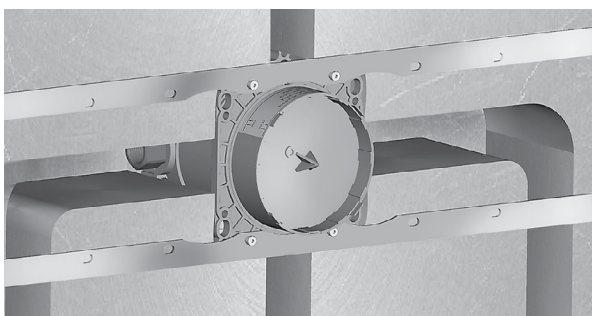
SIMIBOX LIGHT W/O SHUT-OFF



Examples of installation



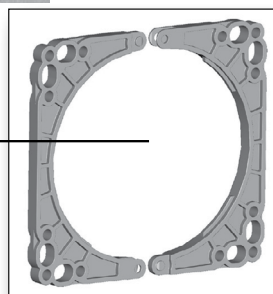
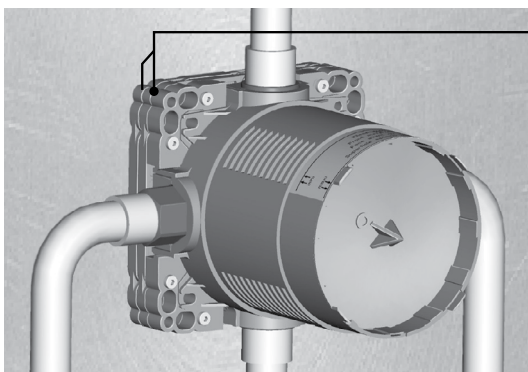
Embedded in the wall



Embedded in the wall **with fixing rails**



Surface mounting



Remote installation on the wall with flanges
(each flange 8 mm thick)

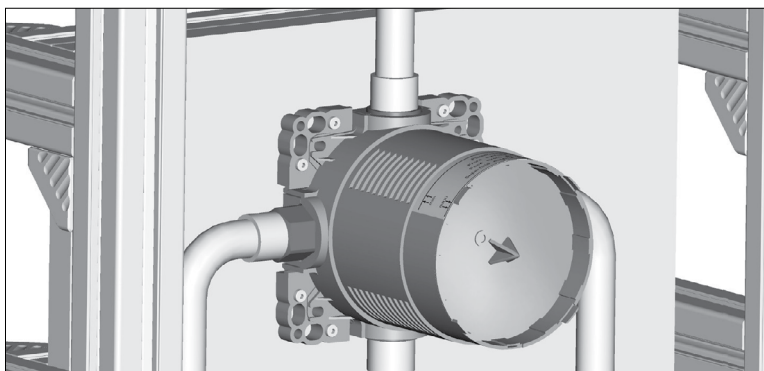
Plumbers, please ensure a copy of the installation instructions is left with the end user for future reference

LAUFEN

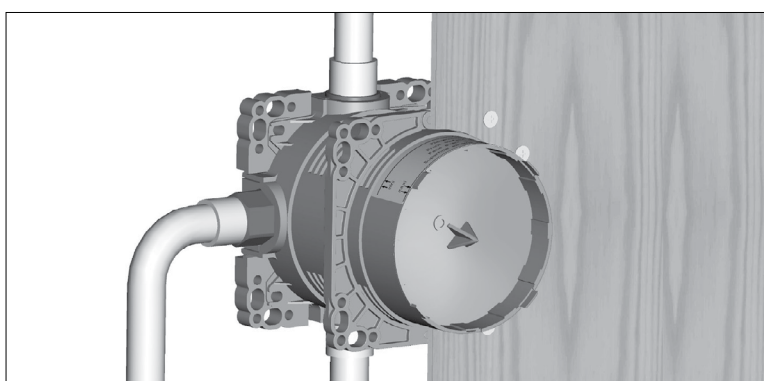
SIMIBOX LIGHT W/O SHUT-OFF



Examples of installation

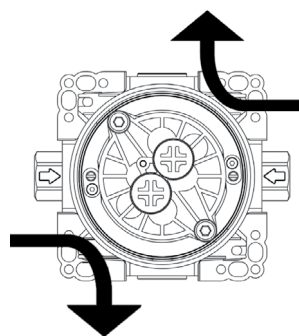


Installation with supporting frame

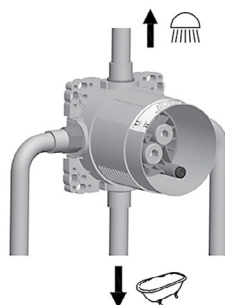


Installation behind a prefabricated wall

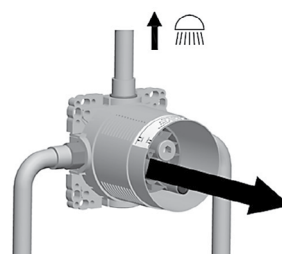
Pressure test and network purging



Both exits must be purged



Purge through the outlets



Purge from the front

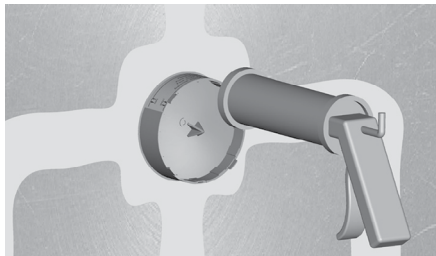
Plumbers, please ensure a copy of the installation instructions is left with the end user for future reference

LAUFEN

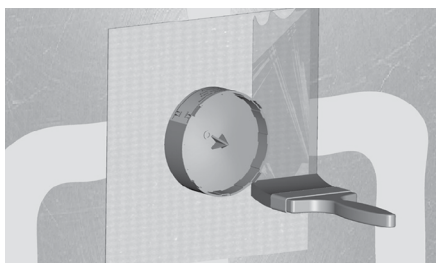
SIMIBOX LIGHT W/O SHUT-OFF



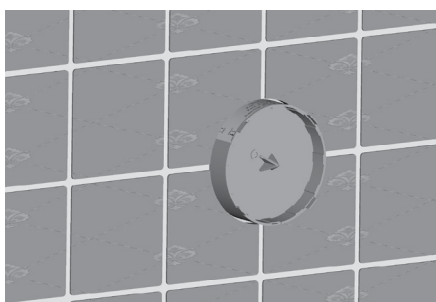
Finishing



If necessary put a silicone seal between the wall and the box



Coat the wall with adhesive and fit the sealing cuff



Apply the wall decoration



Take the lid off and cut the plastic case flush with the wall using a cutter



Plumbers, please ensure a copy of the installation instructions is left with the end user for future reference