



Nobili Oz T2 Pull Out Sink Mixer (4 Star)

Note

Mixer must be installed by a licenced plumber.

Important

Your mixer comes to you already factory assembled and tested.

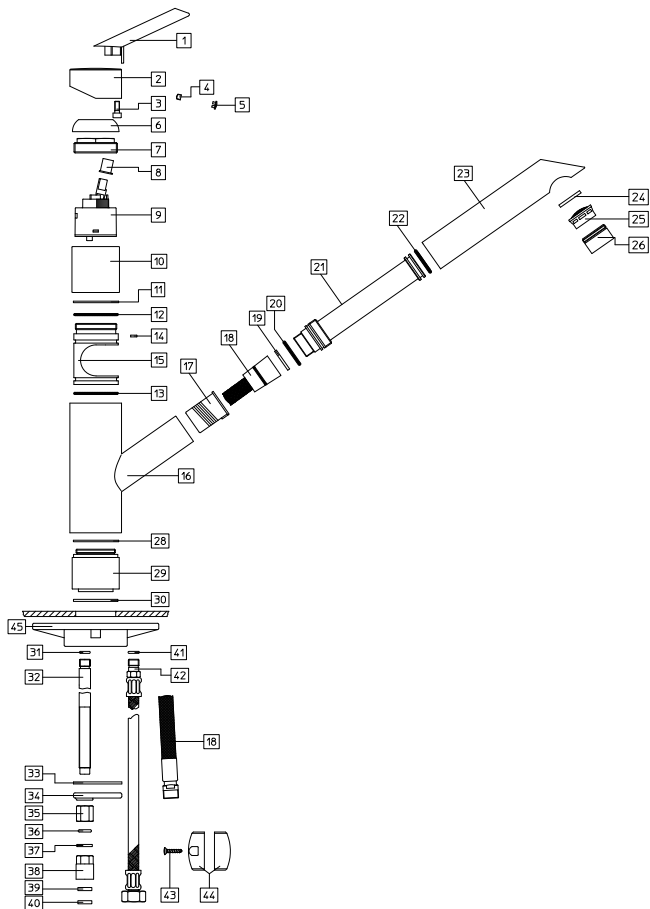
We do not recommend the dismantling of any internal part of the mixer. The mixers are factory tested and sealed so as to give the best performance.

1. Please flush out new pipe work prior to connecting the new mixer.
2. All mixers must be installed with isolating stop cocks (Arco brand recommended).
3. In some areas where the incoming water exceeds 500kpa, an approved pressure limiting device must be installed. Equal pressure for hot and cold water supply is required for this single lever mixer.
4. Mixers are recommended for use on mains pressure and instantaneous systems only.
5. Place the base washer into position (30).
6. Fit flexible connections and mixer body through sink hole making sure first that flexible connectors (42) are firmly tightened into base of the body.
7. Do not use teflon tape on threads.

8. From underneath apply your washer (33) prior to positioning the horse shoe plate (34) and hex nut (35).
9. Lock the mixer onto the the sink and tighten the hex nut (35).
10. Connect the nylon flexible hose (18) by tightening the adapting nipple (38) into the brass bolt (32) making sure first to insert the rubber seal for adapting the nipple (37).
11. Connect the hot and cold water supplys with isolating stop cocks (Arco recommended). Fit lead weight (43-44) to nylon hose (18) so that hand piece (23) fully retracts into the tap body.
12. Mixer includes double check valve fitted into hand spray. Clean aerator at regular intervals, particularly if you notice a drop in pressure.

SERVICING - REPLACEMENT OF CARTRIDGE

1. Remove the indicator cap (4) and upscREW the locking screw (3).
2. Lift off Lever (1) and remove Dome and locking nut (6 & 7).
3. Lift out cartridge (9) and replace with new, making sure the two lugs on the bottom of the cartridge sit properly into the alloacted holes at the base of the body (16).



Exploded View

Item Description

1	Lever	34	Horse Shoe Plate
2	Handle	35	Hex Nut
3	Locking screw	36-37	Rubber Seal
4	Indicator Button	38	Adapting nipple
5	Grub Screw	39-40	Rubber Seal
6	Dome	42	Hot/Cold Water Flexible Hose
7	Lock Nut	43-44	Lead Weight
8	Thermo Cap		
9	Cartridge		
10	Outer casing ring		
11	Seal		
12	O ring		
13	O ring		
14	Rubber Washer		
15	Body with hoses		
16	Cast Body		
17	Insert		
18	Flexible Nylon Hose		
19	Rubber Washer		
20	O Ring		
21	Hand Piece Insert		
22	O Ring		
23	Hand Spray		
24-26	Aerator		
28	Rubber Washer		
29	Base		
30	Base Washer		
31/41	O Ring		
32	Fixing Brass Bolt		
33	Under Sink Washer		

Plumbers, please ensure a copy of the installation instructions is left with the end user for future reference.

