

**NOTE:** REGAL AUSTRALIA IS HAPPY TO PROVIDE TECHNICAL ASSISTANCE TO OUR CUSTOMERS IN MANY AREAS. HOWEVER, SINCE REGAL AUSTRALIA IS NOT AWARE OF ALL DATA CONCERNING THE USE AND APPLICATION OF THIS MOTOR, THE SUITABILITY OF THE MOTOR FOR THE APPLICATION MUST BE DETERMINED BY AND IS THE RESPONSIBILITY OF THE CUSTOMER.



## MOTOR SPECIFICATION

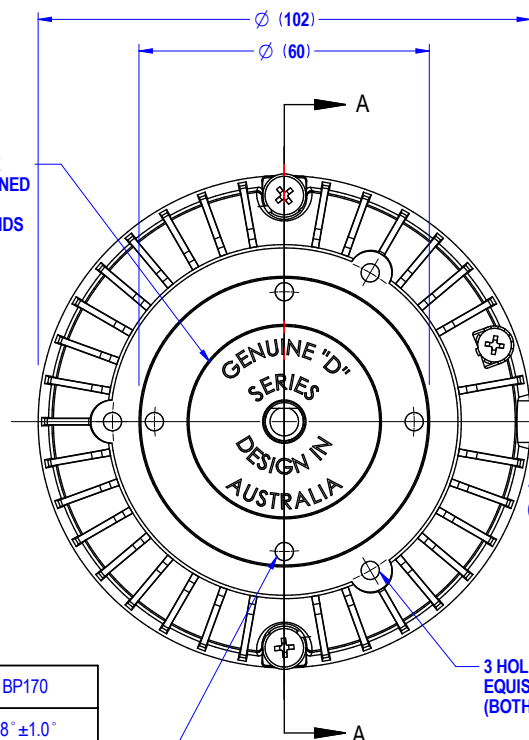
CUSTOMER				
CUSTOMER P/N				
QR No.		CAPACITOR	uf / V	
POWER OUTPUT	10W	START	NIL	
MOTOR TYPE	SH/POLE	RUN	NIL	
SUPPLY	VOLTS	HERTZ	PHASE	POLES
	240	50	SINGLE	4
ENCLOSURE	TOTALLY ENCLOSED			
SPEED (RPM) AT RATED OUTPUT	1300	WINDING TYPE	FIXED	
ROTATION	CLOCKWISE - LEAD END			
INSULATION CLASS	F 155	DUTY	AOM	
THERMAL PROTECTION	AUTO RESET			
RATED CURRENT	0.38	AMPS AT RATED OUTPUT		
APPLICATION	FAN DRIVE			
MOUNTING	TAPPED HOLES IN ENDSHIELDS			
BEARING & LUBRICATION	608ZZ WIDE RANGE, LONG LIFE			
SUPPLY LEAD	COLOUR	PVC GREY		
	<input checked="" type="checkbox"/> MULTI STRAND	LENGTH	750 <sup>+50</sup> <sub>-0</sub> (45±5 STRIPPED)	
	<input type="checkbox"/> SINGLE CORE	TERMINALS	BOOTLACES	
		Q.C. HOUSING	NIL	
EARTH PROVISION	VIA SUPPLY LEAD			
BASIC BUILD SPECIFICATION				
PERFORMANCE SPECIFICATION				
SHAFT MATERIAL	MILD STEEL			
CONNECTION DIAGRAM	NIL	PAINT SPEC	NIL	

### SPECIAL REQUIREMENTS

- 1) PLACE IN PLASTIC BAG AND ATTACH TO LEAD  
4 - SCREWS 3/16" BSW x 8.0mm PAN POSI HD.  
4 - SHAKEPROOF EXTERNAL WASHER 5mm I.D.
- 2) RUST PREVENTATIVE TO BE APPLIED TO MILD STEEL SHAFTS AFTER ASSEMBLY.
- 3) SINGLE CARTON, 6-MOTORS IN PLAIN BOX.
- 4) 1-ONLY INSTRUCTION SHEET 398-060-01 TO BE PLACED IN EACH SIX PACK CARTON.
- 5) SHAFT MATERIAL 45 STEEL.

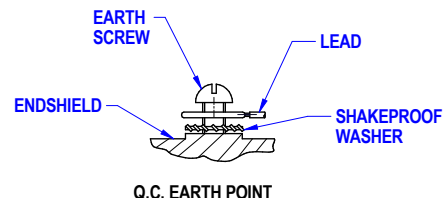
DO NOT SCALE PRINT

SURFACES MUST BE THOROUGHLY CLEANED PRIOR TO AFFIXING LABELS AT BOTH ENDS

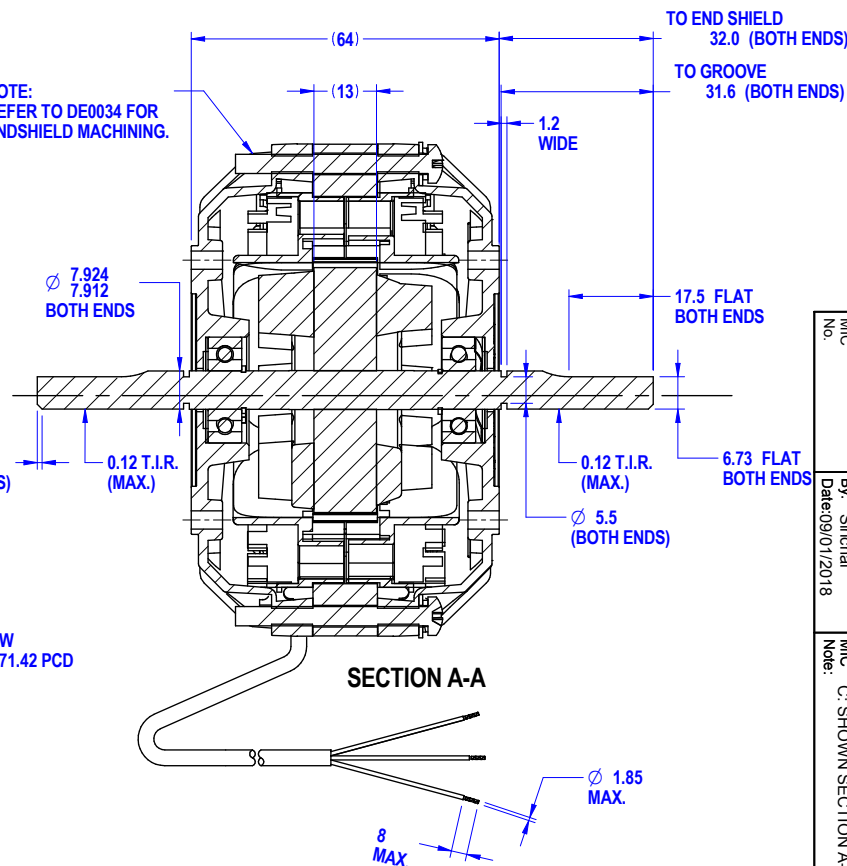


4 HOLES 3/16" BSW  
EQUISPACED ON 54.0 PCD  
(BOTH ENDS)

3 HOLES 3/16" BSW  
EQUISPACED ON 71.42 PCD  
(BOTH ENDS)



NOTE:  
REFER TO DE0034 FOR  
ENDSHIELD MACHINING.



SECTION A-A

DIMENSIONS IN mm UNLESS OTHERWISE SPECIFIED  
GENERAL TOLERANCES  
LINEAR: X = ±1.0  
X.X = ±0.25  
X.XX = ±0.1  
ANGULAR: X° = 2°  
X.X° = ±0.5°  
SURFACE FINISHES IN MICRO METRES. MAX 3.0  
SYMBOLS - A.S. 1100

This drawing remains the property of Regal Australia Pty. Ltd.  
No part or parts of this drawing may be reproduced without  
written permission.

MAT'L		
FINISH		
DRAWN	MURFETTR	07/05/07
CHECKED		
RELEASED		
SCALE		

**REGAL**

19 Corporate Avenue  
Rowville, Melbourne  
Victoria 3178, Australia

FRAME	MOTOR		
STATUS	4P 10W		
SHEET	DWG. NO.	REVISION	
A3	50D501-80AT	C	