

Ona

5 Star

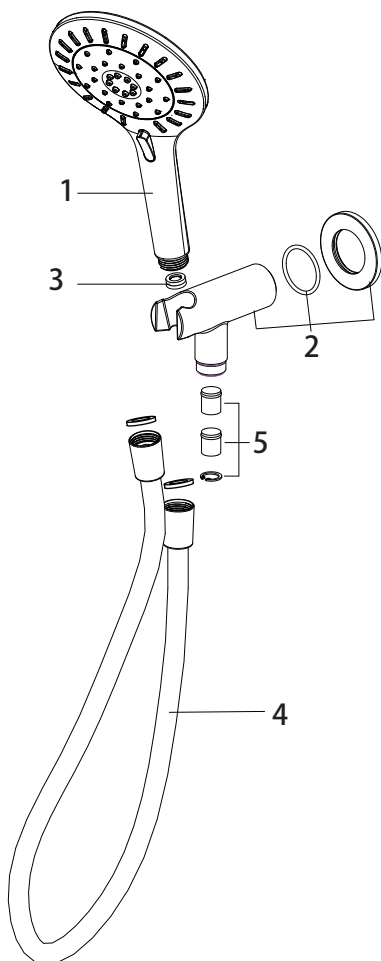


A5B839E..A



- ⚠ Must be installed to the requirements of AS/NZS 3500 by suitably qualified personnel.
- ⚠ This product is suitable for use with high pressure water supplies.
- ⚠ This product is not suitable for gravity fed supplies.
- ⚠ Care must be taken to ensure that male connecting threads do not damage the flow controllers and check valves included with this product.
- ⚠ Ensure the water supply line is flushed free of debris prior to installation.

Roca



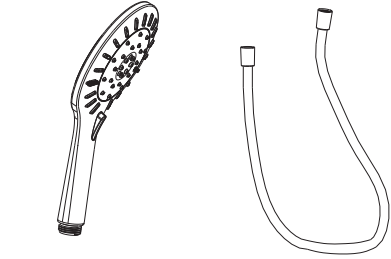
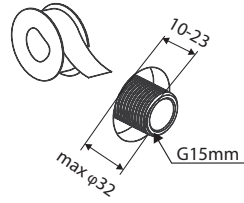
1 - HAND SHOWER
2 - INLET BRACKET

3 - RESTRICTOR 7L
4 - SHOWER HOSE

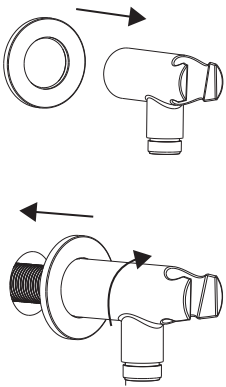
5 - CHECK VALVE KIT

1

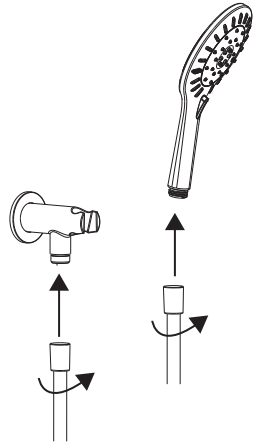
⚠ Only use teflon tape




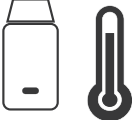

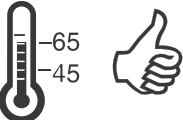


2



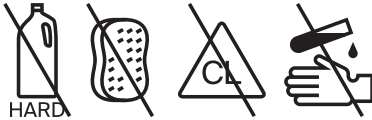
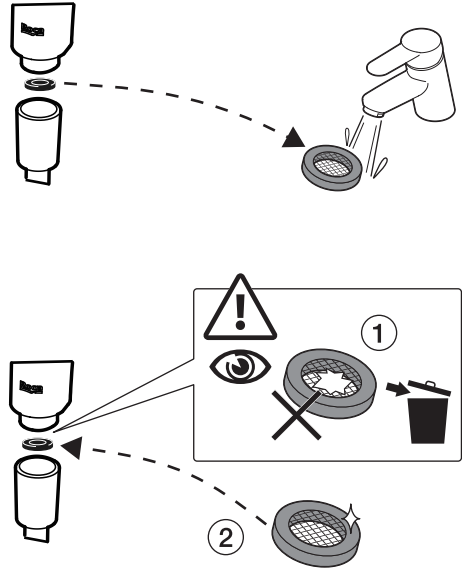
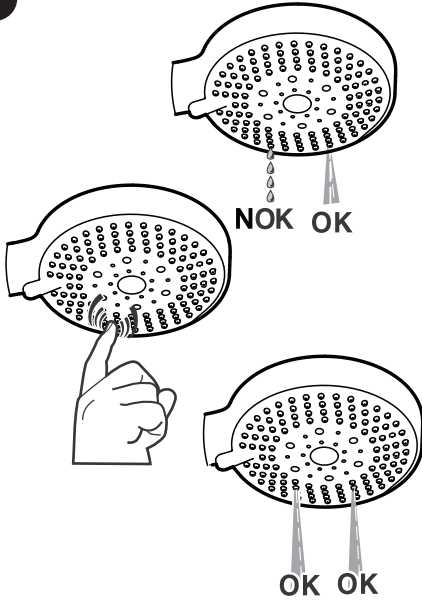
3



 P	kPa		
 T	°C		



(mm)



Roca Sanitario, S.A.U.
 Avda Diagonal, 513
 08029 Barcelona - España
 roca.es

Care details are outlined in this document.
 Damage caused by any improper treatment is
 not covered by the product warranty - refer to
 warranty conditions at reece.com.au.

Roca

OP.23930027007-aa