

mizu

Mizu Soothe Pulldown Sink Mixer Tap (4 Star)

IMPORTANT NOTE

Mixer must be installed to the requirements of AS/NZS 3500 by a qualified plumber. Your mixer comes to you already factory assembled and tested. We do not recommend the dismantling of any internal part of the mixer. The mixers are factory tested and sealed so as to give the best performance.

1. Please flush out pipe work prior to connecting the new mixer.
2. All mixers should be installed with isolating stop cocks (Arco brand recommended).
3. This tap is suitable for high pressure applications where both hot and cold water supply pressures are at 150kPa or above.
4. Place the O-ring (11) and Dress Ring (10) into position.
5. Place the tap body into the sink hole making sure first that the flexible connectors are firmly tightened into base of the body.
6. From under bench place stainless steel sealing washer (12) over body thread (13) and secure mixer into position by tightening lock sleeve (14) onto thread with (28) fixing support.

SERVICING-REPLACEMENT OF CARTRIDGE

1. Lift chrome cover and unscrew the grub screw using Allen key.
2. Remove sink mixer handle (20), cartridge dome (19) and unscrew the lock nut (16).
3. Pull out cartridge (15) and replace with new, making sure the cartridge sits properly into the mixer body. Replace the lock nut (16), cartridge dome (19) and sink mixer handle (20).
4. Tighten grub screw and push in chrome cover.

Plumbers, please ensure a copy of the installation instructions is left with the end user for future reference.

mizu

Mizu Soothe Pulldown Sink Mixer Tap (4 Star)

COMPONENT LIST

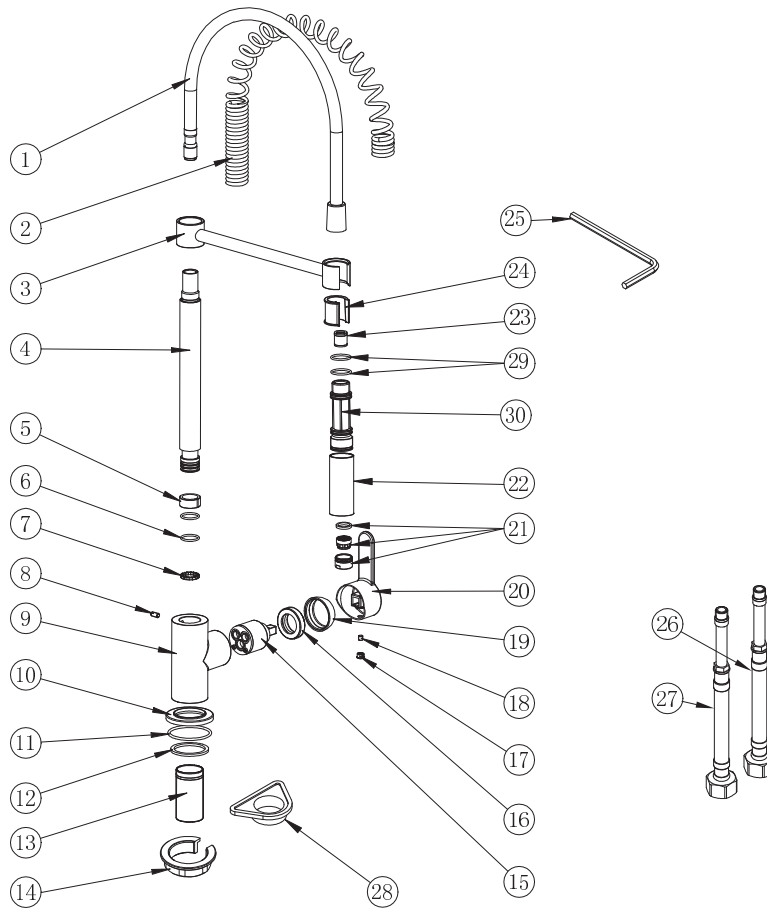


DIAGRAM NUMBER	DESCRIPTION
1	JIANG LIN Pull Out Hose
2	Spring
3	Support
4	Support Column
5	Rubber Ring
6	O-Ring
7	Rubber Ring
8	Set Screw
9	Body
10	Dress Ring Base
11	O-Ring
12	Sealing Washer
13	Body Threaded Pipe
14	Lock Sleeve
15	Cartridge

DIAGRAM NUMBER	DESCRIPTION
16	Bonnet
17	Plug
18	Set Screw
19	Cartridge Dome
20	Handle
21	Neoperl Aerator
22	Spout
23	NEOPERL Check Valve
24	Spout Plug
25	Spanner
26	Flexible Hose (Single Groove Blue)
27	Flexible Hose (Single Groove Red)
28	Fixing Support
29	O-Ring
30	Spout Internal Cylinder