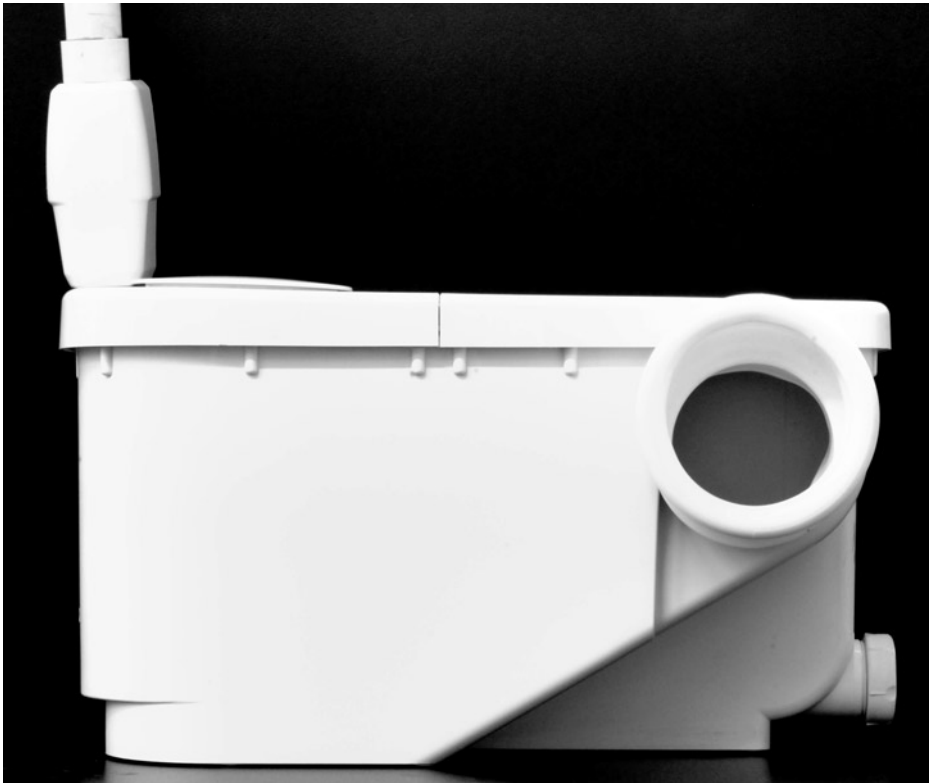


**INSTALLATION  
INSTRUCTIONS  
AND MAINTENANCE  
GUIDE**



***T-502 WASTE DISPOSER***





# INSTALLATION INSTRUCTIONS AND MAINTENANCE GUIDE



## T-502 WASTE DISPOSER



### TABLE OF CONTENTS

1. SAFETY INSTRUCTIONS .....	01
2. MAIN COMPONENTS .....	02
3. INTRODUCTION .....	03
4. GENERAL DESCRIPTION .....	03
4.1. Operating.	
5. MOUNTING ASSEMBLY OF SYSTEM .....	04
5.1. Installation recommendations.	
5.2. Connection to Power Supply.	
5.3. Starting of Appliance by the installing plumber.	
6. INSTRUCTIONS FOR END USERS .....	06
7. MAINTENANCE OPERATIONS .....	07
7.1. Cleaning.	
7.2. Troubleshooting guide.	
7.3. Motor dismantling and removal.	
7.4. Replacement/Cleaning non-return valve.	
8. TECHNICAL SPECIFICATIONS .....	11
8.1. Hydraulic Characteristics.	
9. TECHNICAL DIAGRAMS .....	12
10. WASTE DISPOSER UNIT DISMANTLING .....	13
10.1. Macerator body parts.	
10.2. Cassette parts.	
11. DIMENSIONS .....	14
12. DECLARATION OF COMPLIANCE .....	15
13. WARRANTY .....	16

### 1. SAFETY INSTRUCTIONS.



**CAUTION:** For the purpose of reducing the risk of electrocution, do not open the upper lids. Do not manipulate the interior of the sanitary waste disposer.

Always seek qualified and professional help.



**WARNING:** For the purpose of avoiding possible fires and electrocution, do not expose this appliance to water, rain or flood.

### DETAILED SAFETY INSTRUCTIONS.

The following safety and operating instructions must be read before operating the appliance and kept in case of future enquiries.

All the user's instructions and guidelines established in the manual must be followed.

***This product is to be installed in accordance with the Plumbing Code of Australia (PCA) and AS/NZS3500. Electrical installation by licensed electrical contractor to AS/NZS3000.***

## DETAILED SAFETY INSTRUCTIONS.

The appliance should be installed in such a way and position that the air inlet and outlet through the top are not obstructed. The appliance must not be installed within pieces of furniture or cupboards that may stop the airflow around the unit.

The unit must be placed away from heat sources such as: radiators, heaters and other appliances generating heat.

This appliance must be connected to the electrical power supply indicated in these instructions or on the adhesive label fixed to it.

This unit must only be connected to an earthed socket. Check if the socket works correctly before use.

The supply cable must be placed to avoid being stepped on, pierced or damaged by any object near it.

The waste disposer must only be cleaned with a damp cloth moistened with a mild soap solution. Do not employ cleaning products containing solvents or acids.

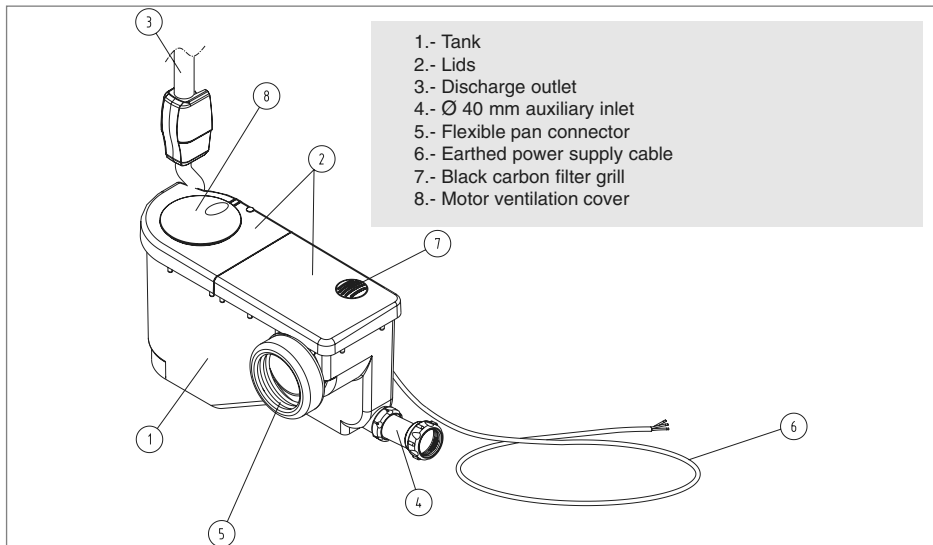
When long non-use periods are expected, disconnect the plug from the socket. Take care to turn off the stopcock preventing the water supply to the cistern. Empty the cistern before switching off the waste disposer.

Do not allow flushing of unacceptable foreign objects into the unit such as: sanitary towels, tampons, condoms, cotton, cotton buds, scouring pads, sponges, hair, food waste, plastic bags, nappies, paper towels, etc.

Damages that require technical support such as: Damage in the power supply cable, appliance working inadequately or incorrectly, must be repaired by qualified professionals.

Except where otherwise stated in this manual, all maintenance and repairing operations must be carried out by qualified personnel.

## 2. MAIN COMPONENTS



### 3. INTRODUCTION.

The CICLON XS waste disposer is designed to allow the installation and drainage of fixed WC and bathroom facilities (WC, washbasin, shower, bidette or urinal) in locations not accessible to conventional vented graded drains. These facilities can be placed at a distance and/or at a different level from a waste pipe as long as there is a vented graded drain pipe available at a maximum horizontal distance of 42 metres (m) or at a maximum vertical distance of 4m or a combination of both as described in this manual.

The CICLON XS sanitary waste disposer is the solution to problems with renovating and creating bathrooms in places such as: attics, basements, garages, shafts and staircases, offices, factories, restaurants, pubs, gyms, shops, etc. and it is also suitable for a bathroom within a bedroom due to its low noise level.

The CICLON XS waste disposer is designed to evacuate sewage, defecations and toilet paper. It must not be installed as food waste disposer connected to kitchen sinks or fixtures equipped with pumps such as washing machines or dishwashers.

Its attractive and practical design fits perfectly into the bathroom and makes its installation and dismantling easier in the case of maintenance being required, thanks to the independence of the motor unit. It allows easy access and fast replacement, thus avoiding the "out of service" situation while being repaired.

Ensure you get the best out of your new CICLON XS waste disposer by matching it to a 6/3 litre toilet suite. The waste disposer is designed to operate with a minimum 6 litre full flush to evacuate solids.

### 4. GENERAL DESCRIPTION.

The CICLON XS sanitary waste disposer allows the simultaneous installation and drainage of a sanitary appliance, placed at the same level (washbasin, bidette or urinal) as well as the toilet pan.

A "P-trap pan" (exits through the wall) is connected to the waste disposer by means of a Ø 110-mm flexible offset coupling which is provided.

The waste disposer consists of two main parts:

- The main body ①, which receives all the discharge connections from the sanitary appliances.
- The motor set which has all mechanisms: the pressure switch, the motor, the rotary blades and the pump.

#### 4.1. OPERATING.

Once the waste disposer is installed, it starts working by either flushing the cistern or by waste water being discharged from an attached fixture connected to the auxiliary inlet connection.

Sewage and waste materials pass into the unit and increase the water level. The pressure micro switch comes on and the pump motor is activated.

The blades grind the objects going through the toilet pan ⑤ (or additional inlet ④) by rotating at 2,800 r.p.m, then the pump drives these materials through the discharge outlet ③ into a 25mm PVC pressure pipe outlet graded to a vented sewer drain.

Depending on the height of the vertical discharge pipe, an operating cycle may last between 7 and 12 seconds.

In case of excessively long operation, or if the waste disposer runs continuously, it is necessary to check for leaks from the cistern to the pan or in the other connected fixtures

## 5. MOUNTING ASSEMBLY OF SYSTEM.

Place the CICLON XS waste disposer directly behind the toilet pan and connect every inlet and outlet (see connection figure on page 12). Provide a one metre minimum distance from the vented graded drain to the waste disposer, so that it can operate for the appropriate time to eliminate the waste effectively.

Connect the pan outlet to the drainage coupling and mark fixing points on the floor.

Remove the pan and drill the marked fixing holes into the floor.

Re-connect pan/toilet suite to the waste disposer's pan collar. If the toilet is a close coupled suite, it might be more convenient to assemble it before fixing it to the floor.

Fix the toilet suite to the floor.

Connect the water supply to the cistern inlet valve. Ensure the position of the mini-stop isolating tap does not interfere with the location, operation, or maintenance access to the top of the waste disposer. The waste disposer installation requires 220mm clearance above the unit.

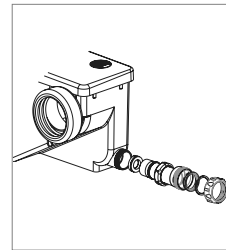
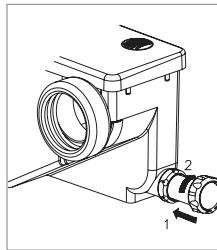
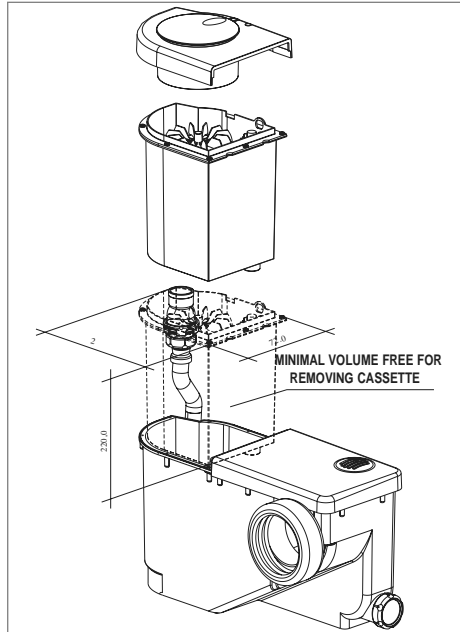
The CICLON XS waste disposer has an auxiliary inlet, by means of a 40mm (1 1/2 ") side connection provided with a non return valve, to connect a single fixture. If the side auxiliary inlet is not used, there is a plug to seal the connection. The unit receives water from the sanitary appliance by the action of gravity. The graded waste pipe from the basin, shower or other fixture, into the waste disposer must have a positive grade to allow drainage when the waste disposer is not working.

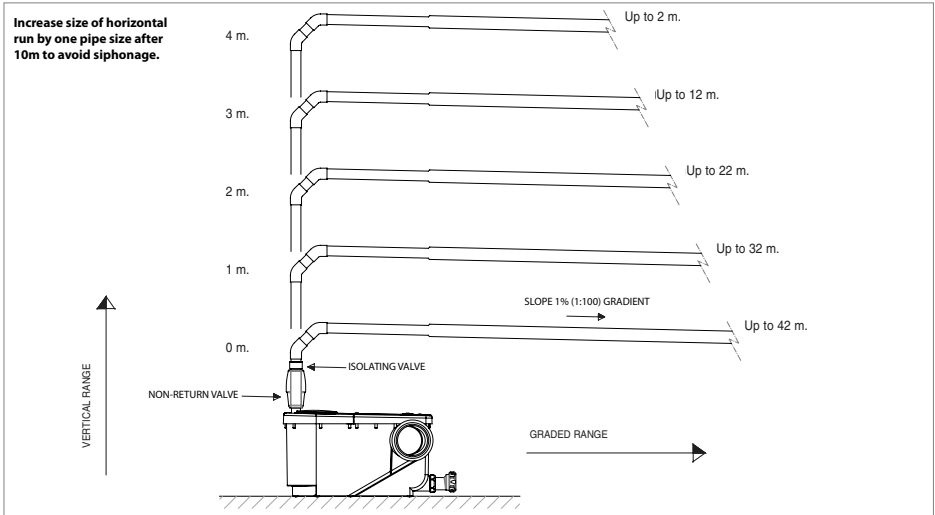
When a shower base is connected to the waste disposer, it is essential to provide a minimum height of 180 mm between the lower part of the shower base and the waste disposer base, thus providing the necessary grade towards the waste inlet of the waste disposer.

The CICLON XS waste disposer has a discharge socket, which is equipped with a non-return clapper valve. In case of obstruction and for easy cleaning of the non-return valve it is recommended to install a shut-off valve within the vertical discharge pipe that interrupts its emptying (immediately above the non-return valve) on the pumped discharge line.

Connect a 25mm PVC pressure pipe for the pumped discharge and evacuation up to a maximum height of 4m or to a maximum horizontal distance of 42m, or a combination of both (see diagram). A constant 1% (1:100 gradient) minimum slope must exist up to the discharge point.

In combined installations (vertical and horizontal), it must be considered that 1m of vertical elevation is equivalent to approximately 10m of pipe at 1% (1:100) gradient.





- If the installation includes a vertical elevation, the latter must prevail over the graded length of pipe, that is, any vertical section of the pumped discharge pipe must be located immediately after the waste disposer's non-return valve (NRV). The installation of bends or U-turns results in a pressure head loss that must be subtracted from the maximum pumping distance (reduce 1 m per bend from the maximum graded distance).

## 5.1. INSTALLATION RECOMMENDATIONS

**PIPE** – For the pumped discharge use a 25mm PVC Pressure Pipe. Do not trap or make siphons with the pipe that may retain objects and cause obstructions.

**PIPE SUPPORT** – Discharge pipes must be fixed with the appropriate clips according to the manufacturer indications and AS/NZS 3500.

**BENDS** – Do not use 90° elbows. Two 45° elbows can be employed to make a 90° bend.

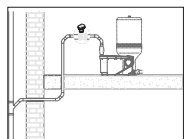
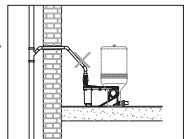
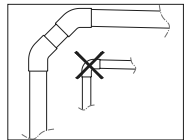
**AVOID DIAGONAL INCLINED RUNS** – Discharge pipes must always be installed vertically or on grade, but never diagonally.

**PROTECTION AGAINST FROST** – In areas where frost risk due to low temperatures is high, all pipes at risk of freezing must be protected by means of thermal insulation.

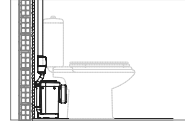
**CONNECTION TO THE SEWER** – The connection to the sewer must be carried out by means of a 45° inclined, or oblique junction. If the connection to the sewer is at a lower level than the waste disposer base, a Premi-Aire Air Vent must be set above the highest point in the installation to prevent the waste disposer from siphoning.

**DISCHARGE** – The pumped discharge from the waste disposer must always be connected to the soil drainage system. Do not connect the pumped discharge into a disconnector/yard, or open gully, grey water system, a waste pipe, stormwater drain, or other unauthorised pipe etc.

**VENTILATION** – The waste disposer unit must be placed directly behind the pan/toilet suite. It should never be installed in wall-embedded installations, behind walls, etc, as they prevent the correct ventilation of the motor, which incorporates a self-ventilating mechanism.



**SANITARY APPLIANCES** – The CICLON XS waste disposer comes prepared for connecting a single toilet and one sanitary appliance (washbasin, shower, bidette or urinal). It does not allow for connection of other electric powered appliances, such as washing machines or dish washing machines equipped with pumping devices, which may interfere with the correct functioning of the unit.



## 5.2. CONNECTION TO THE POWER SUPPLY.

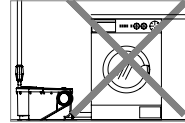
The electrical connection must be carried out after having connected all the sanitary fixtures and the pumped discharge system.

A dedicated 240 V single general power outlet (GPO) is necessary to connect the waste disposer. The GPO must be earthed.

The waste disposer unit should be placed so the power plug remains accessible.

The waste disposer must be connected to a power supply protected by a "Residual Current Device" (RCD).

Before starting any maintenance operation, the unit must be disconnected from the power supply.



## 5.3. STARTING OF APPLIANCE BY THE INSTALLING PLUMBER

To start the unit:

Check that the toilet pan contains no foreign objects.

Open the cistern filling stopcock. The macerator process within the waste disposer needs at least 6 litres to be completed properly.

Check that the power supply is connected to an RCD protected dedicated single GPO.

Operate the cistern several times by putting some pieces of toilet paper in the toilet bowl between each discharge to check the operation of the pumped discharge evacuation process. After the discharge, there should be no pieces of toilet paper left within the toilet bowl.

## 6. INSTRUCTIONS FOR END USERS.

Once installed and connected to the electrical power supply, the CICLON XS does not require special maintenance.

The waste disposer automatically goes into action every time it receives a water supply from the toilet suite or from the sanitary fixture connected to it. The waste disposer stops when the pump has finished the discharge.

For efficient waste disposer operation, it is recommended to discharge only sewage, defecations and toilet paper.

Warning notices:

- Do not insert foreign objects such as: sanitary towels, tampons, condoms, cotton, cotton buds, scouring pads, sponges, hair, sink waste, food waste, plastic bags, nappies, paper towels, etc, into the unit as they may damage and block the waste disposer.
- Do not pour in any corrosive liquids such as: acids, solvents, oil, paint stripper, as they can damage and affect the correct operation of the unit.
- The warranty does not cover damage caused by foreign objects and corrosive liquids (as stated above).
- The use of cistern mounted slow delivery disinfection devices and over rim (toilet pan rim) disinfection devices are strongly discouraged and must not be used. Cistern mounted disinfection may cause premature destruction of flush valve rubbers.
- Along with this instruction manual, an adhesive label is provided to be fixed in a visible area (we



recommend to place it inside the toilet seat lid) as a warning sign to avoid ingress of foreign wastes.

- Do not, under any circumstances, use the toilet or connected sanitary fixtures in the event of a power failure.
- If the system is to be left unused for extended periods, it is strongly recommended that the cistern inlet isolating valve be closed and the cistern emptied. This precaution is to minimise the risk of flooding during a period of absence if a power failure was to occur.
- In areas subject to frost and freezing, it is recommended to protect pipes with thermal insulation

In areas of Australia and New Zealand that are subjected to freezing, remedial action is required to protect the waste disposer and associated pipe work.

To manage freezing conditions follow these steps:

- Close the stopcock feeding the cistern and then press the full flush button.
- Fill the cistern with antifreeze solution suitable for plumbing.
- Discharge the cistern again. The antifreeze solution will be pumped through the installation and will fill the discharge pipe.
- Damage to the waste disposer caused by frost or freezing is NOT covered under this warranty.



Self Adhesive Label

## 7. MAINTENANCE OPERATIONS.

The Cyclon XS waste disposer has been designed for high reliability and years of trouble free operation. Below you will find detailed, the most common maintenance tasks, as well as a quick troubleshooting guide for any common problems which may be easily solved.

### 7.1. CLEANING.

Cleaning of the toilet suite connected to the waste disposer, should only be carried out using a good quality non-corrosive mild soap and damp cloth.

In areas with a high level of water hardness and for the purpose of eliminating the lime deposits, it is recommended to regularly clean the appliance as follows:

- Disconnect the waste disposer from the power supply.
- Pour a mixture of 1 litre of vinegar and 3 litres of water into the toilet bowl.
- Leave the mixture to work for approximately 3-4 hours.
- Reconnect the waste disposer to the power supply and switch on the power at the GPO. Flush the toilet.

### 7.2. TROUBLESHOOTING GUIDE.

Before performing any operation, please verify the following steps:

Check that the inlet valve and flush (outlet) valve of the cistern are in good condition, and the water supply to the cistern remains open.

Check that the waste disposer is connected to a power supply protected by an RCD. Ensure it is working (by checking that the RCD has not tripped. Reset the RCD at the power distribution box.

Please check the waste disposer thermal disconnection system has not tripped (the waste disposer includes an automatic disconnection system in case of extremely high temperatures), by waiting approximately 20 minutes (may vary depending on temperature conditions).

In case of excessively long operation, or if the waste disposer runs continuously, please check if there is any sort of leaking from the cistern to the pan or in the rest of the connected fixtures.

Ensure that there is no return to the waste disposer through the non-return valve of the discharge pipe due to an improper closing (verify that the clapper fits properly). (see replacement-cleaning of the non-return valve on page 10).

PROBLEM	REASON	SOLUTION
- The waste disposer does not start.	<ul style="list-style-type: none"> <li>- It is disconnected.</li> <li>- The electrical connection is failing.</li> <li>- The thermal protection circuit has been tripped.</li> </ul>	<ul style="list-style-type: none"> <li>- Connect the unit properly.</li> <li>- Check the electrical connection.</li> <li>- Wait approximately 20 minutes until the motor cools.</li> </ul>
- The Residual Current Device (RCD) trips.	<ul style="list-style-type: none"> <li>- Motor earth wire is defective.</li> </ul>	<ul style="list-style-type: none"> <li>- Motor out of service. Contact your local Reece store.</li> </ul>
- The motor works, but does not discharge or discharges too slowly.	<ul style="list-style-type: none"> <li>- The pumped discharge pipe is obstructed</li> </ul>	<ul style="list-style-type: none"> <li>- Clean the pumped discharge pipe.</li> </ul>
- The motor buzzes but does not spin.	<ul style="list-style-type: none"> <li>- Turbines or blades blocked by foreign bodies.</li> </ul>	<ul style="list-style-type: none"> <li>- Remove the foreign bodies (see 7.3 motor disassembly &amp; removal)</li> </ul>
- After the discharge, the motor starts and stops indefinitely.	<ul style="list-style-type: none"> <li>- Leaks in the non-return valve or water loss from the cistern or from the auxiliary connection.</li> </ul>	<ul style="list-style-type: none"> <li>- Clean the non-return valve of the pumped discharge pipe.</li> <li>- Review and replace the cistern flush valve seals and those of the taps connected to the sanitary fixture.</li> </ul>
- The motor does not stop.	<ul style="list-style-type: none"> <li>- Discharge pipe is too high or too long.</li> <li>- Friction/head loss due to too many elbows in the pumped discharge pipe.</li> <li>- The discharge pipe is obstructed.</li> <li>- The discharge pipe is obstructed due to lime scale remains.</li> <li>- The micro-switch that activates the pump motor does not work properly.</li> </ul>	<ul style="list-style-type: none"> <li>- Review the pumped discharge installation.</li> <li>- Review the pumped discharge installation.</li> <li>- Perform the descaling process as described in section 7.1 Cleaning.</li> <li>- Contact your local Reece store.</li> </ul>
- The motor only works when the WC is discharged but not with the water from the other sanitary connected fixture.	<ul style="list-style-type: none"> <li>- The auxiliary connection or the non-return valve is blocked.</li> <li>- The auxiliary connection lacks ventilation.</li> <li>- The micro-switch that activates the pump is not working properly.</li> </ul>	<ul style="list-style-type: none"> <li>- Clean the waste pipe from the auxiliary connection and the non-return valve.</li> <li>- Install a drainage vent, or a Premi-Aire Air Vent. / Review the pumped discharge pipe installation.</li> <li>- Contact your local Reece store.</li> </ul>
- After the discharge the motor runs continuously for a time before stopping.	<ul style="list-style-type: none"> <li>- The water returns to the waste disposer through the non-return valve. The non-return valve does not work properly</li> </ul>	<ul style="list-style-type: none"> <li>- Flush the toilet several times with clean water and clean the non-return valve.</li> </ul>
- Accumulation of residual waste inside the toilet bowl after flushing	<ul style="list-style-type: none"> <li>- Insufficient water supply from the cistern.</li> </ul>	<ul style="list-style-type: none"> <li>- Adjust the water level in the cistern (6 litres minimum). - ensure that the toilet and cistern connected to the waste disposer are matched 6/3 litre products</li> </ul>
- The water returns to the shower base	<ul style="list-style-type: none"> <li>- The required minimum grade of the shower waste pipe from the shower trap to the inlet of the waste disposer has not been achieved (see shower base height).</li> <li>- The non-return valve of the auxiliary connection does not work properly.</li> </ul>	<ul style="list-style-type: none"> <li>- Review the installation (raising the shower base height)</li> <li>- Clean and/or replace the non-return valve (refer 7.4)</li> </ul>
- Odd noises when the motor operates.	<ul style="list-style-type: none"> <li>- Obstruction due to a foreign object that has entered (been flushed) into the waste disposer through the toilet</li> </ul>	<ul style="list-style-type: none"> <li>- Remove the foreign object from the waste disposer (see 7.3. motor disassembly and removal)</li> </ul>
- The waste disposer does not discharge correctly.	<ul style="list-style-type: none"> <li>- Corrosion of the active carbon filter.</li> </ul>	<ul style="list-style-type: none"> <li>- Replace the filter (contact your local Reece store)</li> </ul>
- Nasty smells coming from the waste disposer.	<ul style="list-style-type: none"> <li>- Obstruction in the Pumped discharge pipe</li> </ul>	<ul style="list-style-type: none"> <li>- Clean the pumped discharge pipe.</li> </ul>

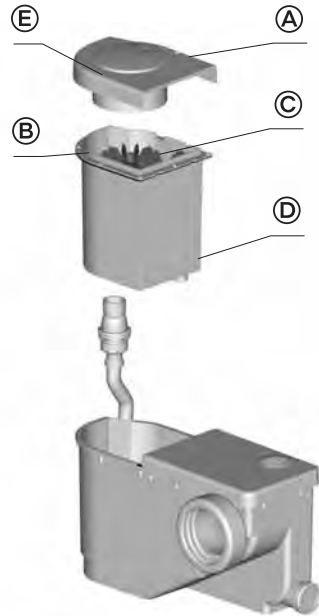
### 7.3. MOTOR DISASSEMBLY AND REMOVAL.

Before opening the waste disposer it is very important to check that the power supply cable has been disconnected from the power point (GPO)

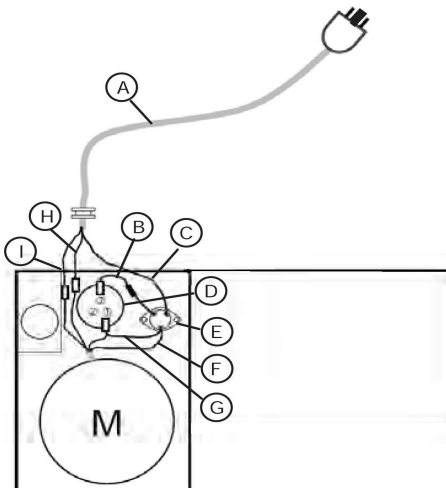
- Remove the protecting screw plug (A) of the cassette cover. Extract the screw. Remove the cassette cover (E).
- To remove the power lead from the motor unplug the spade connectors. Take note of the connections and ensure they are reconnected correctly following the maintenance.
- To remove the cassette set (motor, pressure switch, blades, pump, and condenser) unscrew the 7 fixing screws of the main body (B). Remove the whole cassette set by carefully pulling the motor upwards (C).

**Safety notice:** Pay special attention to the waste disposer blades as they are extremely sharp. Beware, also of the motor, as it might be hot after long periods of use.

- Replace the cassette set (D) with the spare one and assemble it again following the steps in reverse order (see electrical connections below) and replace the cassette cover (E).



The whole process should take 10 minutes.



Network cable (A) – Made up of Live (brown), Neutral (blue) and Earth (Yellow/Green).  
 Triac cable (B) – Live (brown) to connection 3 of pressure switch (D), spade female.  
 Network cable (C) Live (brown) to Triac (E).  
 Triac cable (F) – Live (brown) to motor.  
 Triac cable (G) – Live (brown) to connection 1 of pressure switch (D) and to motor.  
 Neutral (blue) (H) and Earth (Yellow/Green) (I) spade male connection.

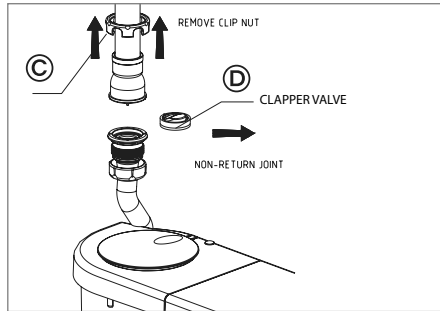
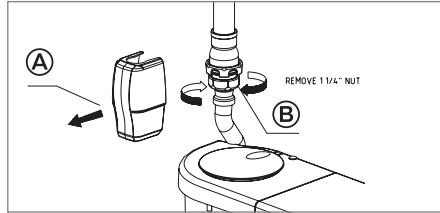
\* If power supply cable is damaged, it must be replaced by the manufacturer or a qualified technician to prevent any danger.

### 7.4. REPLACEMENT / CLEANING NON-RETURN VALVE.

Before starting the replacement / cleaning, of the non-return valve flush the toilet several times and then close the stopcock isolating the pumped discharge in the vertical pipe immediately above the non-return valve. Disconnect the waste disposer unit from the power supply.

- Have a container nearby to collect water.
- Remove the cover **A** and the 1 1/4" nut **B**.
- Release the pipe clips attaching the pipe to the wall in order to move the pipe and to make the dismantling easier.
- Empty the discharge pipe by activating the non-return valve clapper.
- Remove the clip nut **C**
- Check or replace the seal support + non-return joint set (clapper valve) **D**.
- To assemble the valve, follow the steps in reverse order.

Before operating the waste disposer again, and for the purpose of eliminating air within the discharge installation, flush the cistern several times.



## 8. TECHNICAL SPECIFICATIONS.

**Inlets:**

Pan:	Ø 110 mm flexible offset coupling.
Auxiliary:	One 1 1/2" x 40mm auxiliary inlet for Ø40mm pipe.

**Outlet:**

Discharge:	25mm PVC Pressure Pipe
Retaining Valve:	1 1/4" x 32mm that can be converted with adaptor to 25mm pressure pipe (adaptor supplied).

**Pump:**

Voltage:	~220-240 V, AC, 50 Hz.
Fuse:	Thermal
Consumed power:	470 W
Capacitor:	20 µF
Electrical Connection:	Standard 3 pin 10 Amp Australian/ New Zealand plug
Maximum height of pumped discharge	4 m
Max.Graded distance of pumped discharge:	42 m

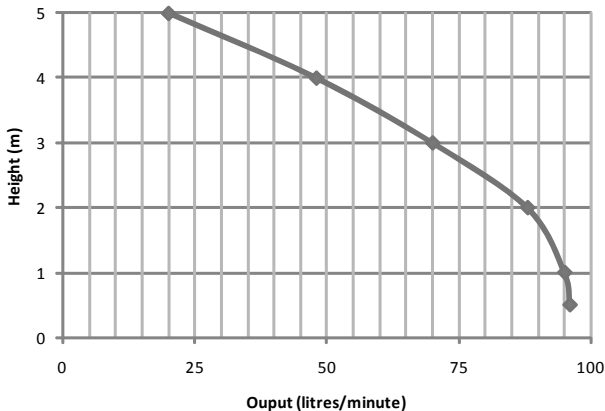
**Maximum Operating Pressure and Temperature**

Temperature:	50°C
Pressure:	100Kpa

**Dimensions and weight:**

Dimensions:	482x180x278 mm
Weight:	7.95 Kg
Weight including packaging:	9.24 Kg

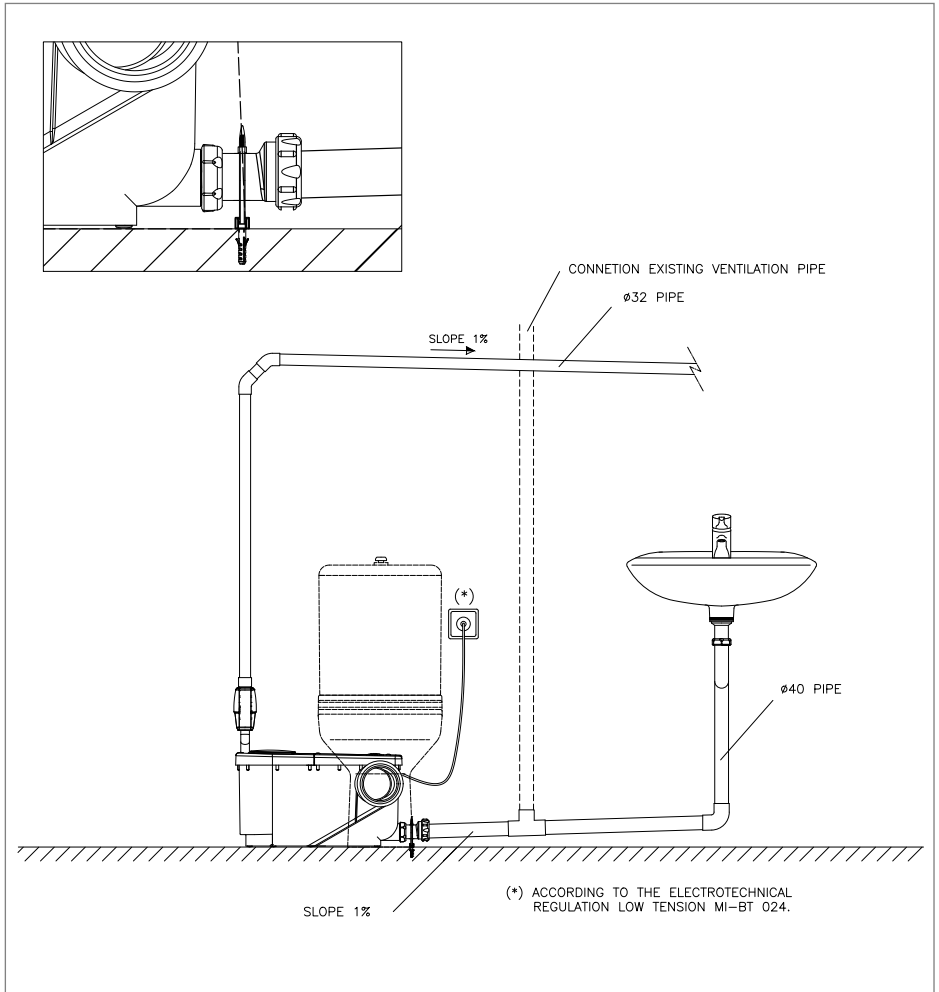
### 8.1. HYDRAULIC CHARACTERISTICS



**NOTICE:** All data provided in this technical catalogue, due to the constant improvement and evolution of our products, can be modified without notice from time to time. This catalogue has no contractual nature and the information is provided in good faith.

## 9. TECHNICAL DIAGRAMS

CICLON XS, WC AND WASHBASIN.



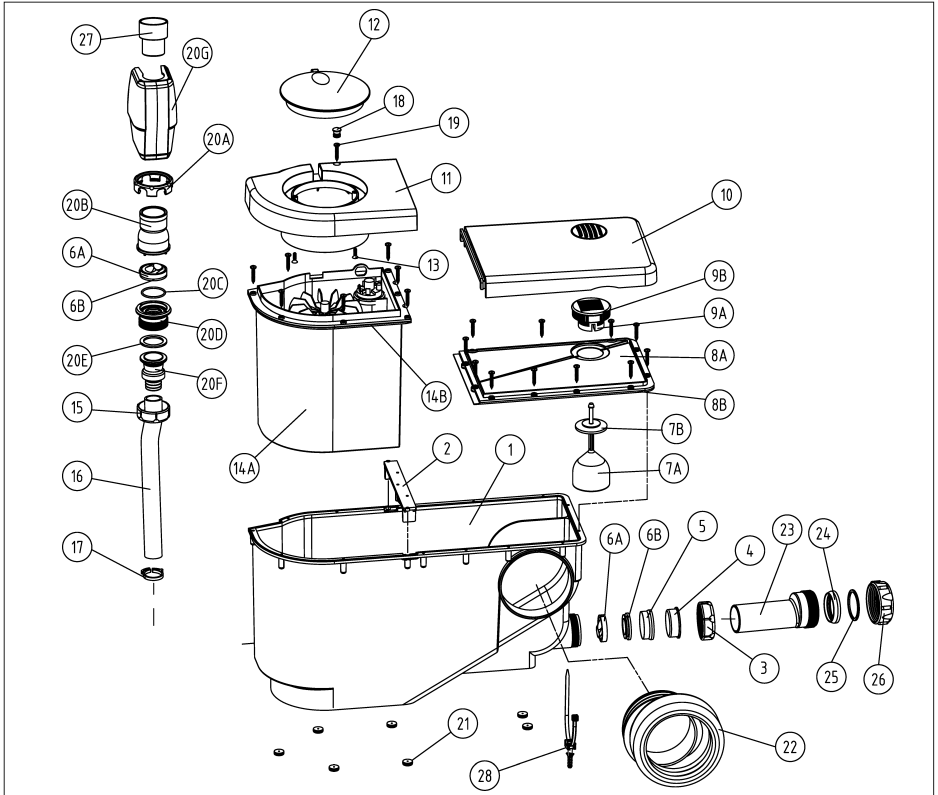
A – CONNECTION TO EXISTING VENTILATION PIPE OR PREMI-AIRE AIR VENT (AAV).

B – DISCHARGE PIPE 25MM PVC PRESSURE PIPE 1% (1:100) GRADIENT.

C – INLET WASTE PIPE 2.5% (1:40) GRADIENT.

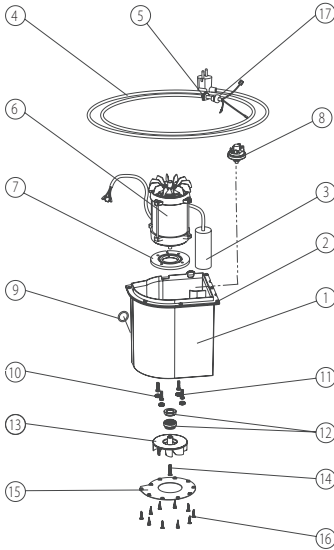
D – \* LOCATION OF POWER SUPPLY MUST BE IN ACCORDANCE WITH AS/NZS 3000 AND MUST BE INSTALLED BY A LICENCED ELECTRICIAN.

## 10. WASTE DISPOSER UNIT DISMANTLING.



### 10.1 MACERATOR BODY PARTS.

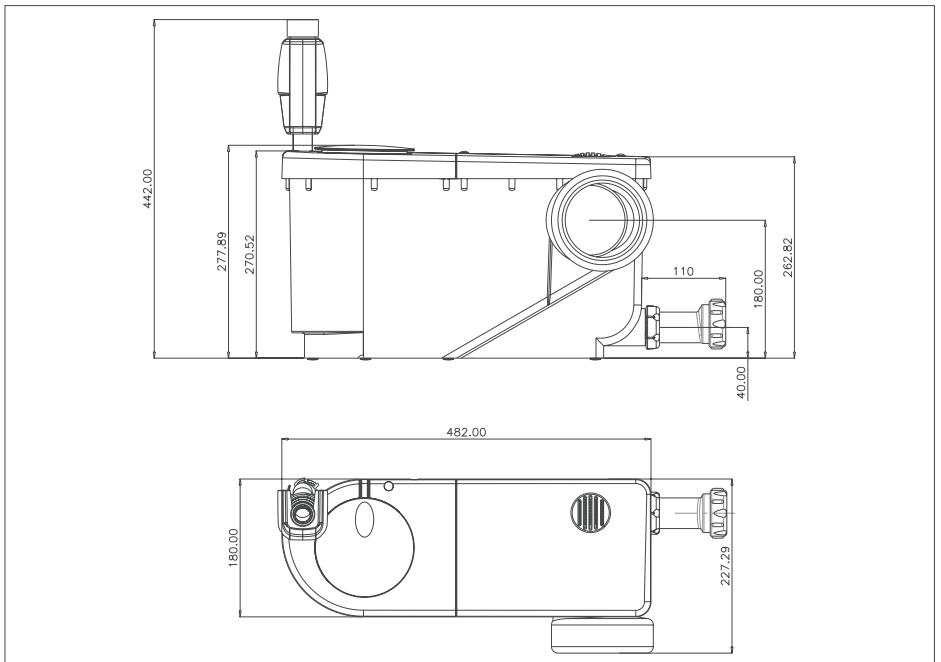
- |       |                          |       |  |
|-------|--------------------------|-------|--|
| (1)   | BODY..                   | (15)  | 1 1/4" NUT                                 |
| (2)   | CROSSBAR                 | (16)  | PVCb PIPE                                  |
| (3)   | 1 1/2" NUT               | (17)  | PLASTIC CLAMP                              |
| (4)   | 1 1/2" CHOKE PLUG        | (18)  | SCREW PLUG                                 |
| (5)   | 1 1/2" BLUE JOINT        | (19)  | FIXING SCREW                               |
| (6A)  | NON-RETURN VALVE JOINT   | (20A) | NUT CLIP FOR NON-RETURN VALVE              |
| (6B)  | NON-RETURN VALVE HOLDER. | (20B) | NON RETURN VALVE LOWER PART                |
| (7A)  | VENTILATION BUOY         | (20C) | 31X2 O-RING                                |
| (7B)  | VENTILATION BUOY JOINT   | (20D) | NON-RETURN VALVE LOWER PART                |
| (8A)  | CLOSING LID TANK         | (20E) | BUTT JOINT                                 |
| (8B)  | WATERTIGHTNESS JOINT     | (20F) | SOLVENT COUPLING                           |
| (9A)  | ACTIVE CARBON TANK       | (20G) | NON-RETURN VALVE EMBELLISHMENT             |
| (9B)  | ACTIVE CARBON TANK LID   |       | LOWER TOPS                                 |
| (10)  | TANK FACING LID.         | (21)  |  |
| (11)  | CASSETTE FACING LID      | (22)  | WC CONNECTION COUPLING                     |
| (12)  | ROUND FACING LID         | (23)  | ECCENTRIC ADAPTOR 40 X 1 1/2 MF            |
| (13)  | ROUND FACING LID SCREW   | (24)  | CONICAL JOINT 1 1/2 MF                     |
| (14A) | CASSETTE                 | (25)  | WASHER 1 1/2 MF                            |
| (14B) | CASSETTE SEALING JOINT   | (26)  | NUT 1 1/2 MF                               |
|       |                          | (27)  | TUBE ADAPTOR Ø 32 X 25MM PVC PRESSURE PIPE |
|       |                          | (28)  | ANCHORING PLASTIC CLAMP TO FLOOR           |



**LIST OF CASSETTE PIECES**

- (1) DEPOSIT BODY
- (2) CASSETTE GASKET
- (3) CAPACITOR
- (4) THREE WIRE HOSE
- (5) BUSHING JOINT
- (6) MOTOR
- (7) MOTOR INSULATION DISK
- (8) PRESSURE SWITCH
- (9) 22 X 3 O-RING
- (10) MOTOR SCREW CAPS
- (11) MOTOR FIXING SCREWS
- (12) CERAMIC ENCLOSURE
- (13) ROTOR
- (14) ROTOR FIXING SCREW
- (15) CASSETTE ROTOR COVER.
- (16) MOTOR COVER SCREW
- (17) CABLE BUSHING

**11. DIMENSIONS.**





## 12. DECLARATION OF COMPLIANCE

# EC CERTIFICATE OF CONFORMITY

THIS PRODUCT COMPLIES WITH:

- AS/NZS CISPR14:** ELECTROMAGNETIC COMPATIBILITY
- AS/NZS 60335.1** HOUSEHOLD AND SIMILAR ELECTRICAL APPLIANCES - GENERAL SAFETY REQUIREMENTS
- AS/NZS 60335.2.41:** HOUSEHOLD AND SIMILAR ELECTRICAL APPLIANCES SAFETY PARTICULAR REQUIREMENTS FOR PUMPS
- WMTS-106:** SMALL BORE PUMPING UNITS

TESTED TO EUROPEAN STANDARDS:

**EN 12050-3:**

WASTE WATER LIFTING PLANTS FOR BUILDINGS AND SITES - PRINCIPLES OF CONSTRUCTION AND TESTING - **PART 3:** LIFTING PLANTS FOR WASTE WATER CONTAINING FAECAL MATTER FOR LIMITED APPLICATIONS

**EN 12050-4:**

WASTE WATER LIFTING PLANTS FOR BUILDINGS AND SITES - PRINCIPLES OF CONSTRUCTION AND TESTING - **PART 4:** NON-RETURN VALVES FOR FAECAL FREE WASTE WATER AND WASTE WATER CONTAINING FAECAL MATTER



The Manufacturer **Aliaxis Iberia, S.A.U.**  
C/ del Yen, s/n - Pol. Las Atalayas  
03114 Alicante, España

## 13. WARRANTY

VALID SERIAL NUMBER STICKER MUST  
BE ATTACHED TO THIS MANUAL.

# WARRANTY & CARE DETAILS

Dear Customer,

This is the warranty by Reece Pty. Ltd. relating to your product. Please keep it together with your purchase receipt. In the event of a query please contact your nearest Reece Plumbing Centre.

### Warranty

You have purchased a quality product from Reece Australia. This product is covered by a 24 month parts & labour warranty. This warranty covers faults in the product construction, material and assembly. Faulty products will be repaired or exchanged free of charge. Faulty items become our property.

Please note that every product is subject to a stringent final inspection before it is delivered.

This warranty does not include faults caused by

- Unsuitable or improper use
- Incorrect installation
- Installation or part installation by the purchaser or any person other than a LICENSED PLUMBER
- Improper or negligent treatment
- Normal wear and tear
- Inadequate or complete lack of maintenance
- Unsuitable usage
- Chemical, electrochemical or electrical influences.

Warranty repairs may only be performed by our service representatives or an authorised customer service workshop.

Any attempt to repair the device by the customer or unauthorised third parties shall terminate the warranty.

Any warranty service granted by Reece will neither extend the period of the warranty nor will any new warranty period be justified for any parts repaired or replaced by us.

To the maximum extent permitted by law, Reece excludes all warranties other than those set out above. In the event of a warranty claim, we will replace or repair defective products, or pay for the cost of having defective products repaired or replaced, but will not be liable for any injury to any person, damage to any property, any indirect or consequential loss, or in any other respect.

### Disclaimer:

The manufacturer/distributor reserves the right to vary specifications or delete models from their range without prior notification. Dimensions and set-outs listed are correct at time of publication however the manufacturer distributor takes no responsibility for printing errors.





