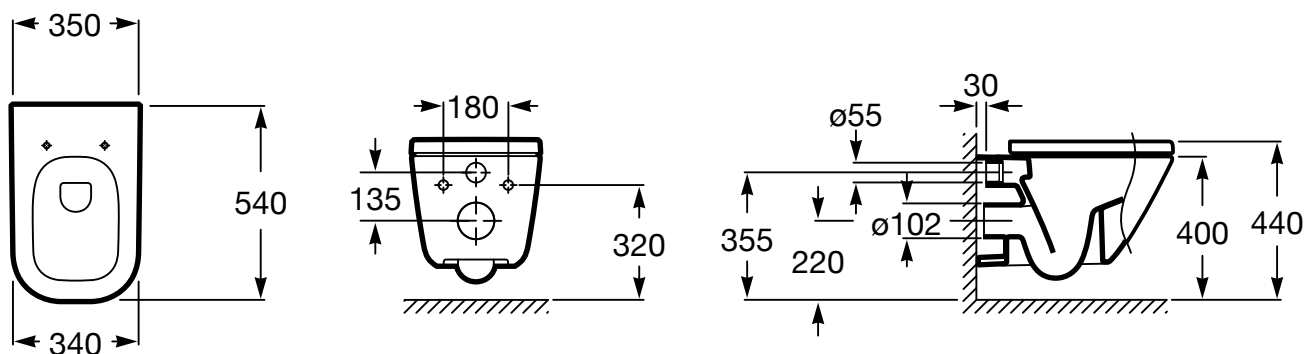


ROCA

THE GAP WALL HUNG PAN



Dimensions are nominal only

Pan heights shown are recommendation only and may be varied

SPECIFICATION

Rim Configuration	Box Rim
Bowl Configuration	P Trap only
Set Out	P Trap: 220mm
Pan Fixing	To wall using solid or cavity (bracket not supplied)
Seat	Matching top-fix, soft-close, quick-release seat supplied with pan
Flushing	4.5/3 litre dual flush
WELS	4 Star WELS Rating
Standards	AS1172.1



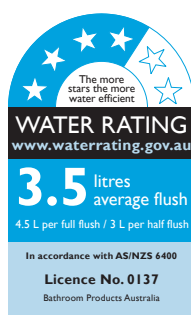
To see the complete Roca range go to www.reece.com.au/bathrooms

FEATURES

Recommended Use	Domestic, hotel and commercial
Weight	Pan: 25.2kg

CLEANING RECOMMENDATIONS

Soapy water or approved bathroom cleaners. This bathroom product should not be cleaned with abrasive materials. Damage caused by any improper treatment is not covered by the product warranty. Refer to Warranty Page for full Terms and Conditions.



Disclaimer: Products in this specification manual must by regulation be installed by licensed and registered trade people. The manufacturer/distributor reserves the right to vary specifications or delete models from their range without prior notification. Dimensions and set-outs listed are correct at time of publication however the manufacturer/distributor takes no responsibility for printing errors.

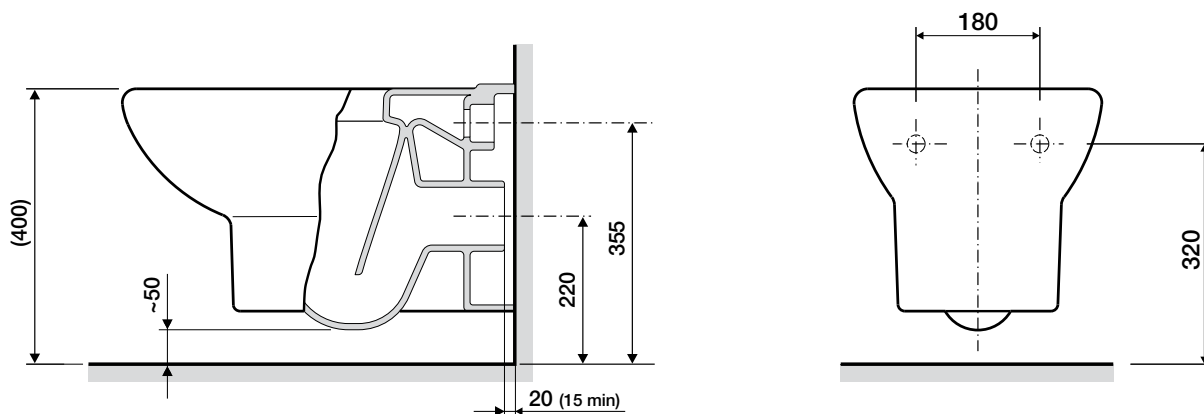
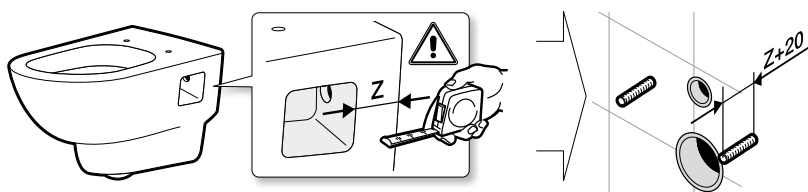
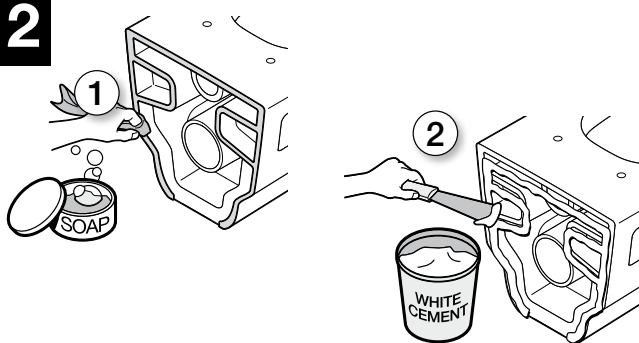
Tech Page Version 1



ROCA

THE GAP WALL HUNG PAN

INSTALLATION


1

2

3
