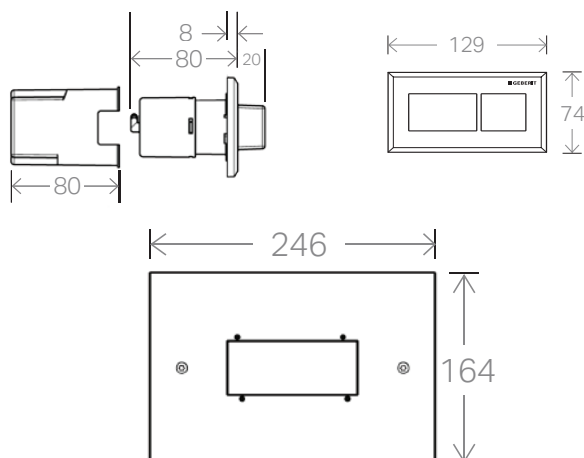


Sigma Pneumatic Raised Height Button & Service Access Panel (Optional)



To see the complete Geberit range go to:
www.reece.com.au/bathrooms

Service access panel is required for inwall installations.

SPECIFICATIONS

Operation	Pneumatic, Remote or Inwall
Application	Dual-flush
Colour range	Bright chrome
Product material	ABS
Compatibility	Suits Sigma8 Cisterns inc Duofix

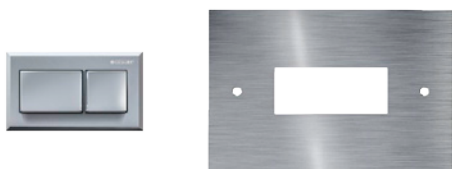
BTW and care compliant pans

Remote installation requires access to service the cistern.

FEATURES & BENEFITS

15 year warranty	Peace of mind
Raised buttons	AS 1428.1 Compatible
25 year spare parts availability guarantee	Serviceable for the life of your bathroom
Vandal resistant	Perfect for commercial buildings
Inwall or remote installation	Greater design flexibility
Small button	Fits any bathroom style
Easy to clean	Finger prints can be removed easily

COLOUR OPTIONS



Sigma Pneumatic Raised Height Button - Chrome **9505488**
Sigma Front Access Plate Only - Brushed Stainless Steel **9505489**

CLEANING INSTRUCTIONS

You have selected a Geberit product with a high-grade surface. Please follow the cleaning instructions so that your Geberit product will give you many years of pleasure.

Never use aggressive cleaners that contain chlorine, are acidic, abrasive or corrosive. Only use water and a mild cleaning agent.

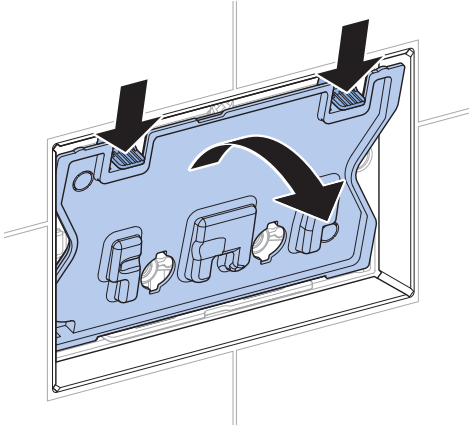
1. Clean the unit with a soft cloth soaked in water.
2. Dry with a soft cloth.

The unit warranty does not cover damage arising from improper treatment with cleaning agents.

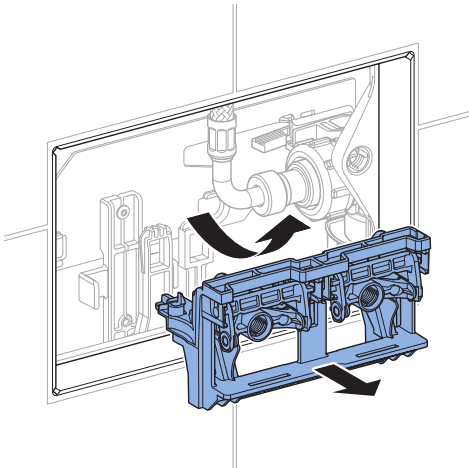


Sigma Pneumatic Raised Height Button & Service Access Panel (Optional)

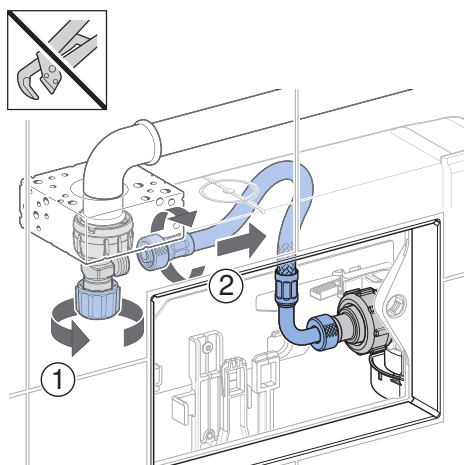
1



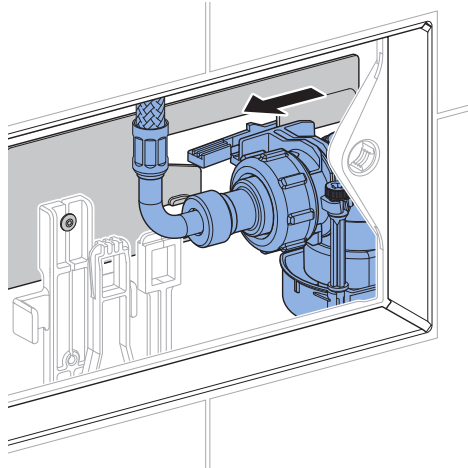
2



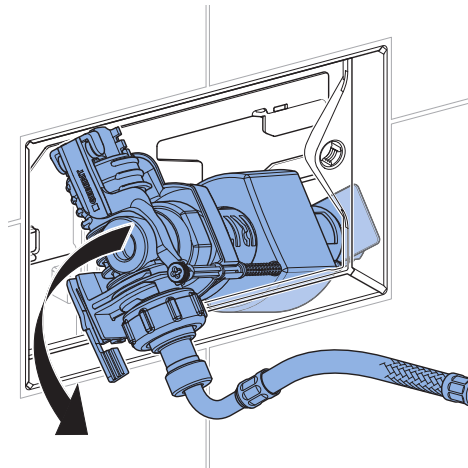
3



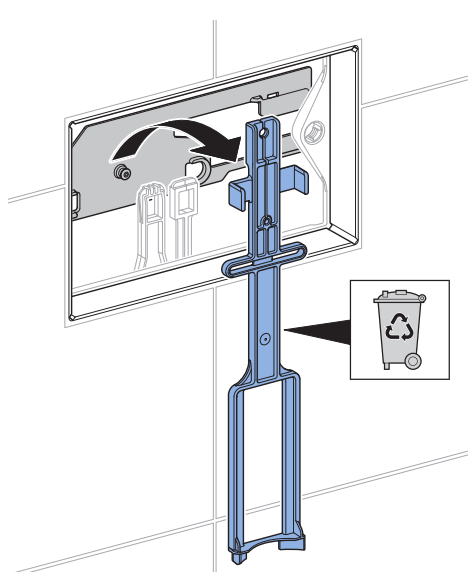
4



5



6

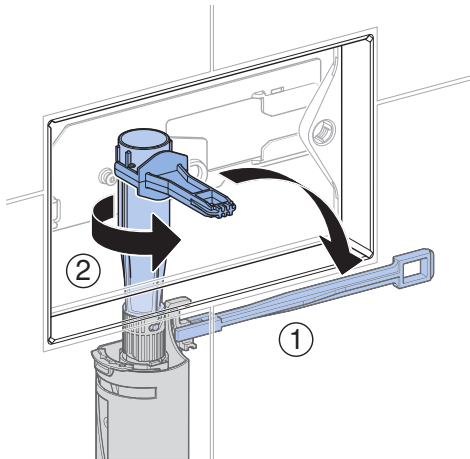


Plumbers, please ensure a copy of the installation instructions is left with the end user for future reference.

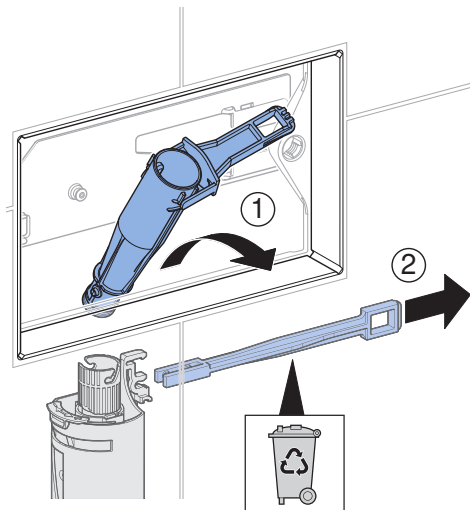


Sigma Pneumatic Raised Height Button & Service Access Panel (Optional)

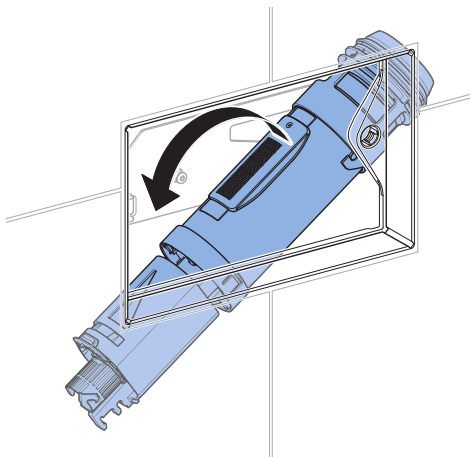
7



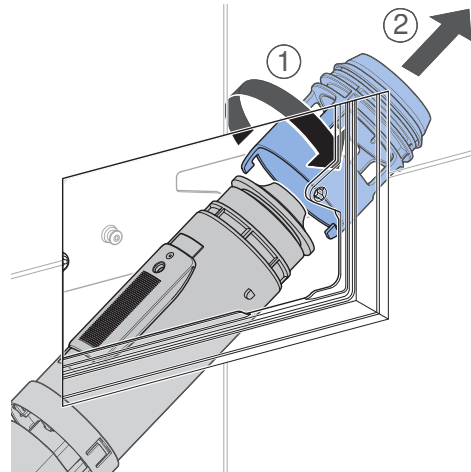
8



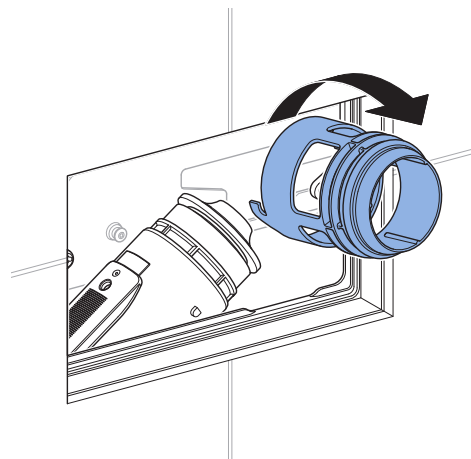
9



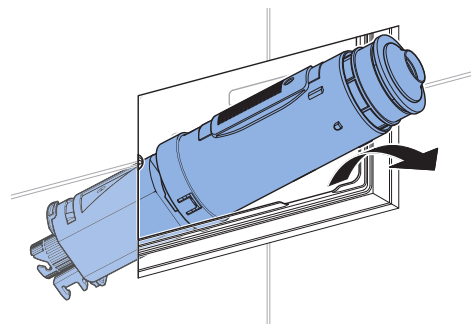
10



11



12

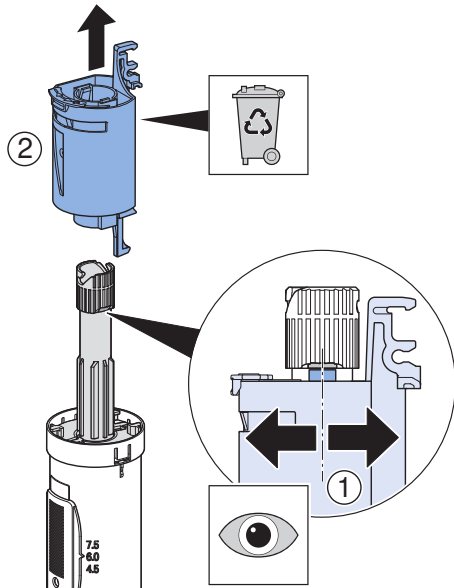


Plumbers, please ensure a copy of the installation instructions is left with the end user for future reference.

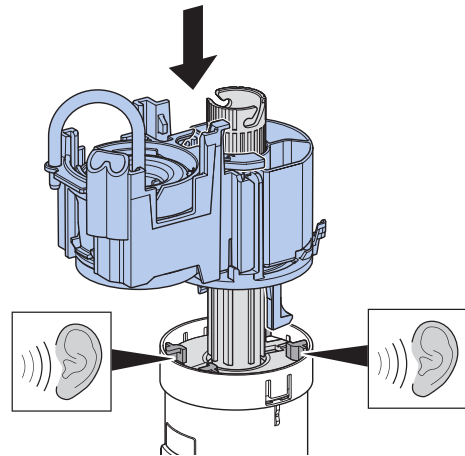


Sigma Pneumatic Raised Height Button & Service Access Panel (Optional)

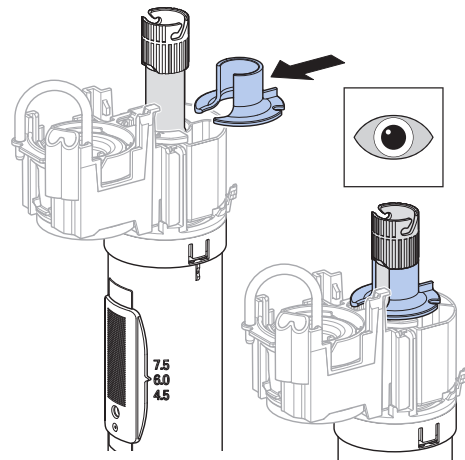
13



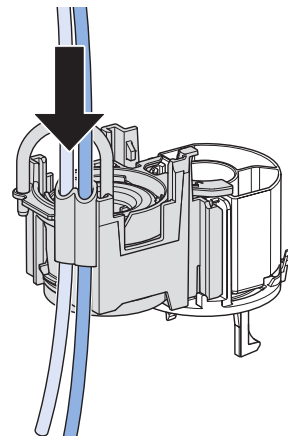
14



15



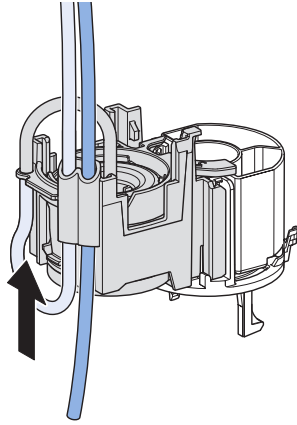
16



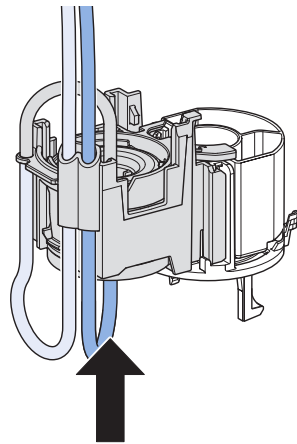
Plumbers, please ensure a copy of the installation instructions is left with the end user for future reference.

Sigma Pneumatic Raised Height Button & Service Access Panel (Optional)

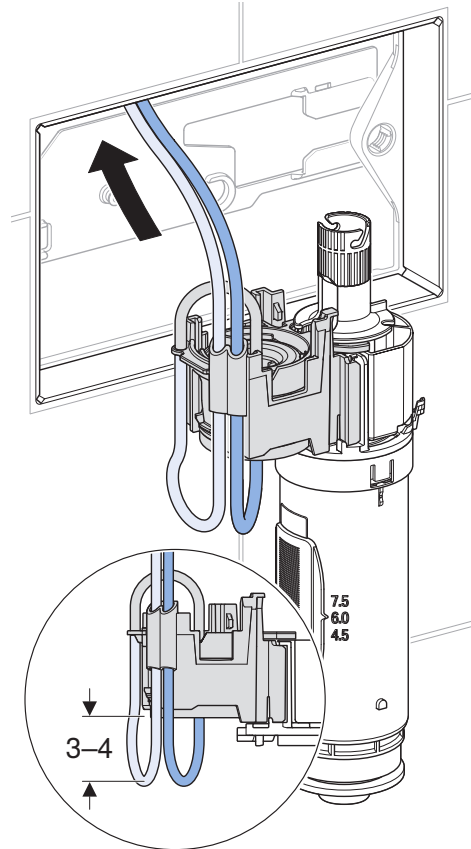
17



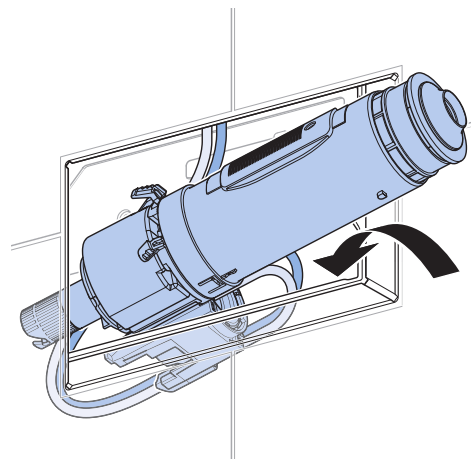
18



19



20

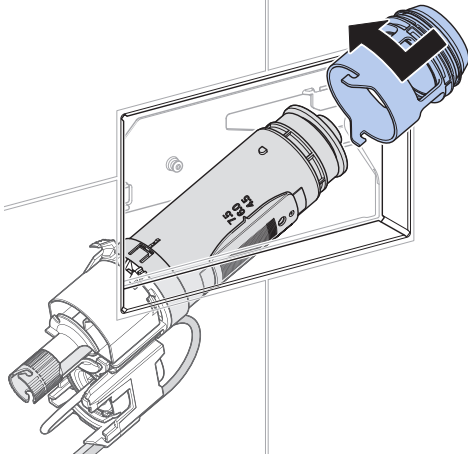


Plumbers, please ensure a copy of the installation instructions is left with the end user for future reference.

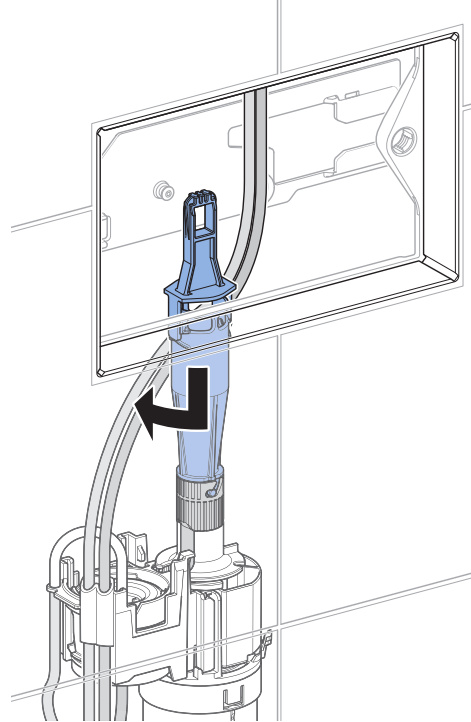


Sigma Pneumatic Raised Height Button & Service Access Panel (Optional)

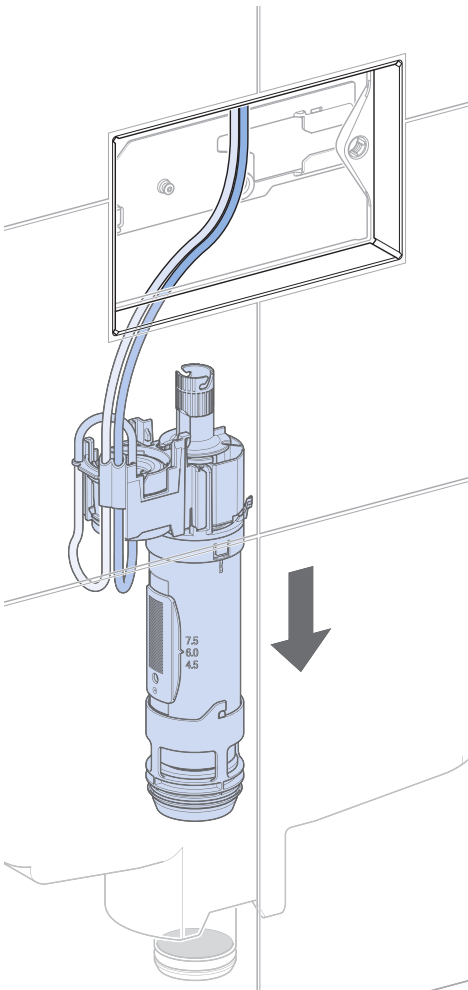
21



23



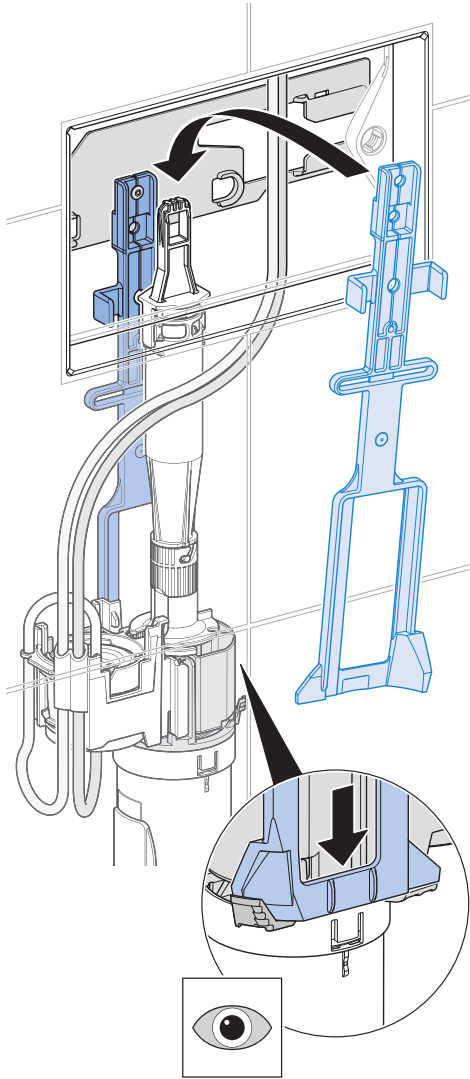
22



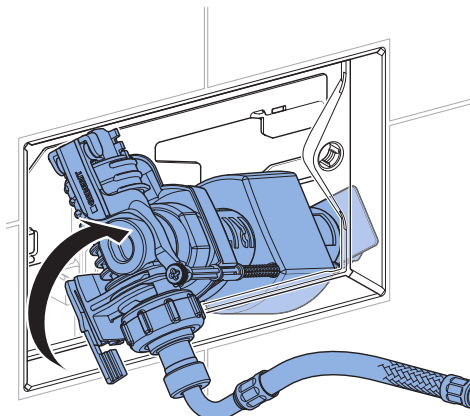
Plumbers, please ensure a copy of the installation instructions is left with the end user for future reference.

Sigma Pneumatic Raised Height Button & Service Access Panel (Optional)

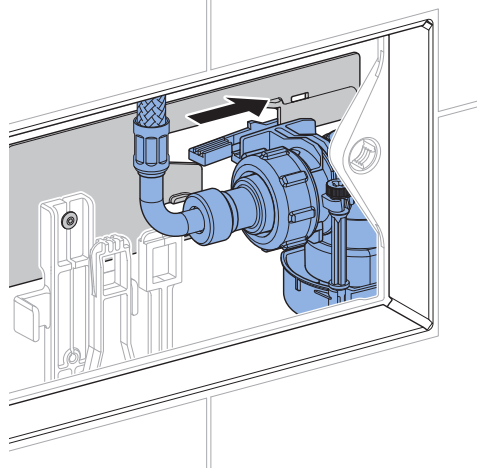
24



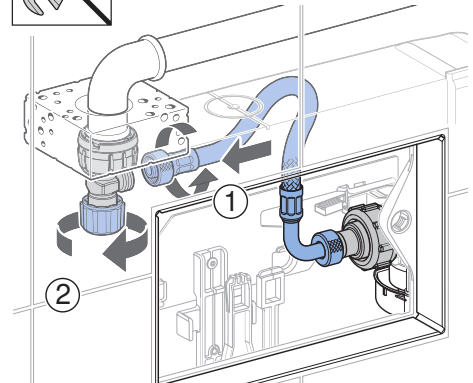
25



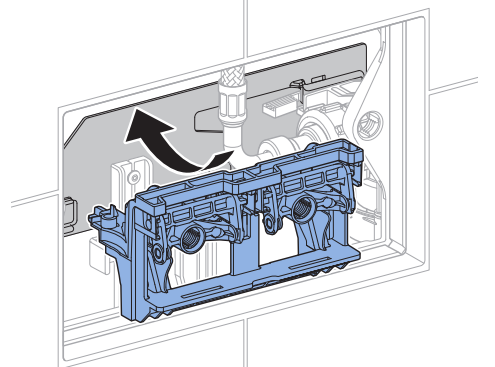
26



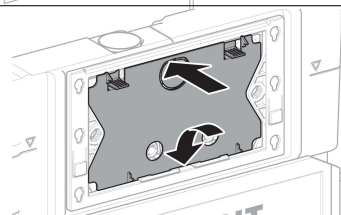
27



28



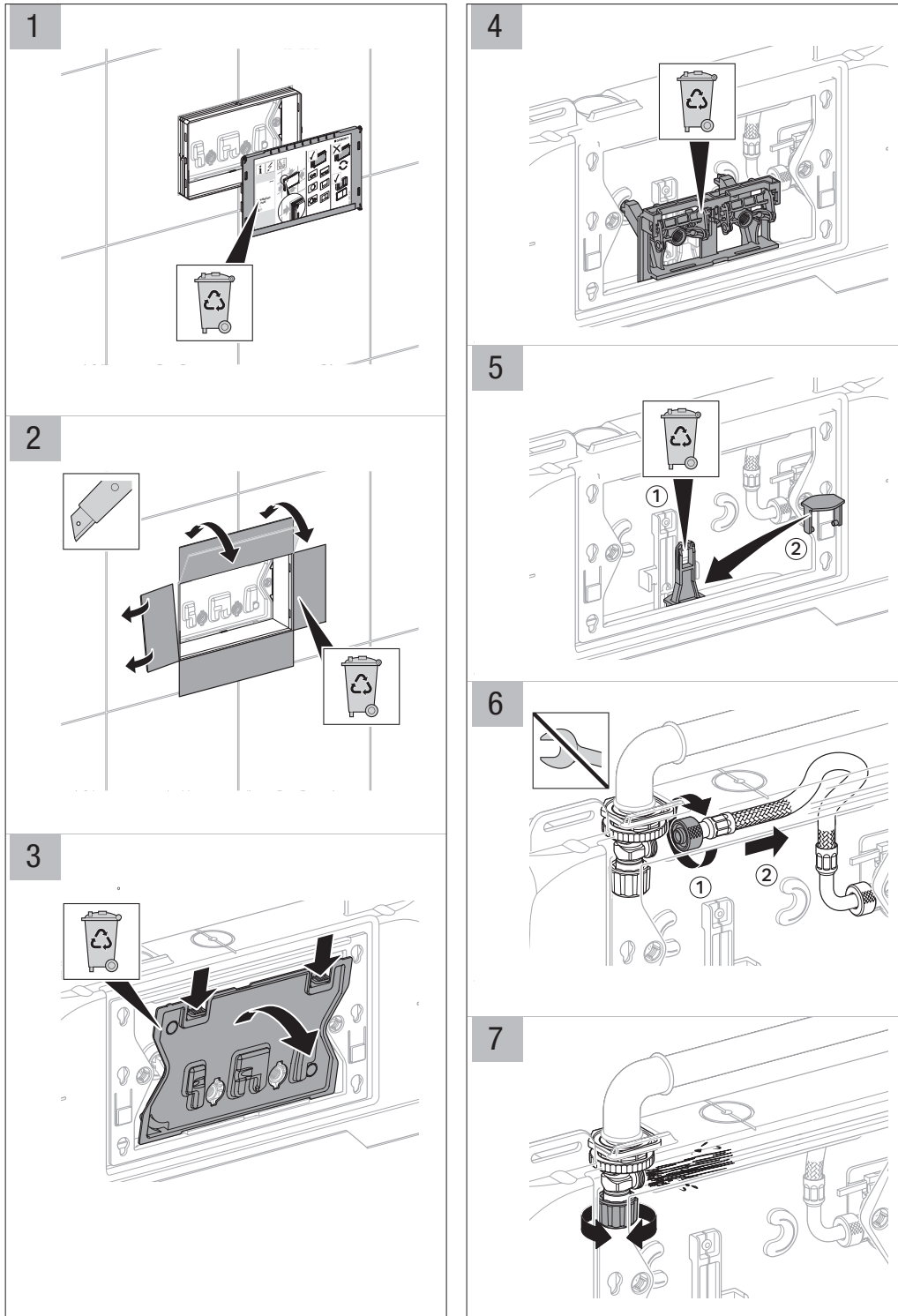
29



Plumbers, please ensure a copy of the installation instructions is left with the end user for future reference.

Sigma Pneumatic Raised Height Button & Service Access Panel (Optional)

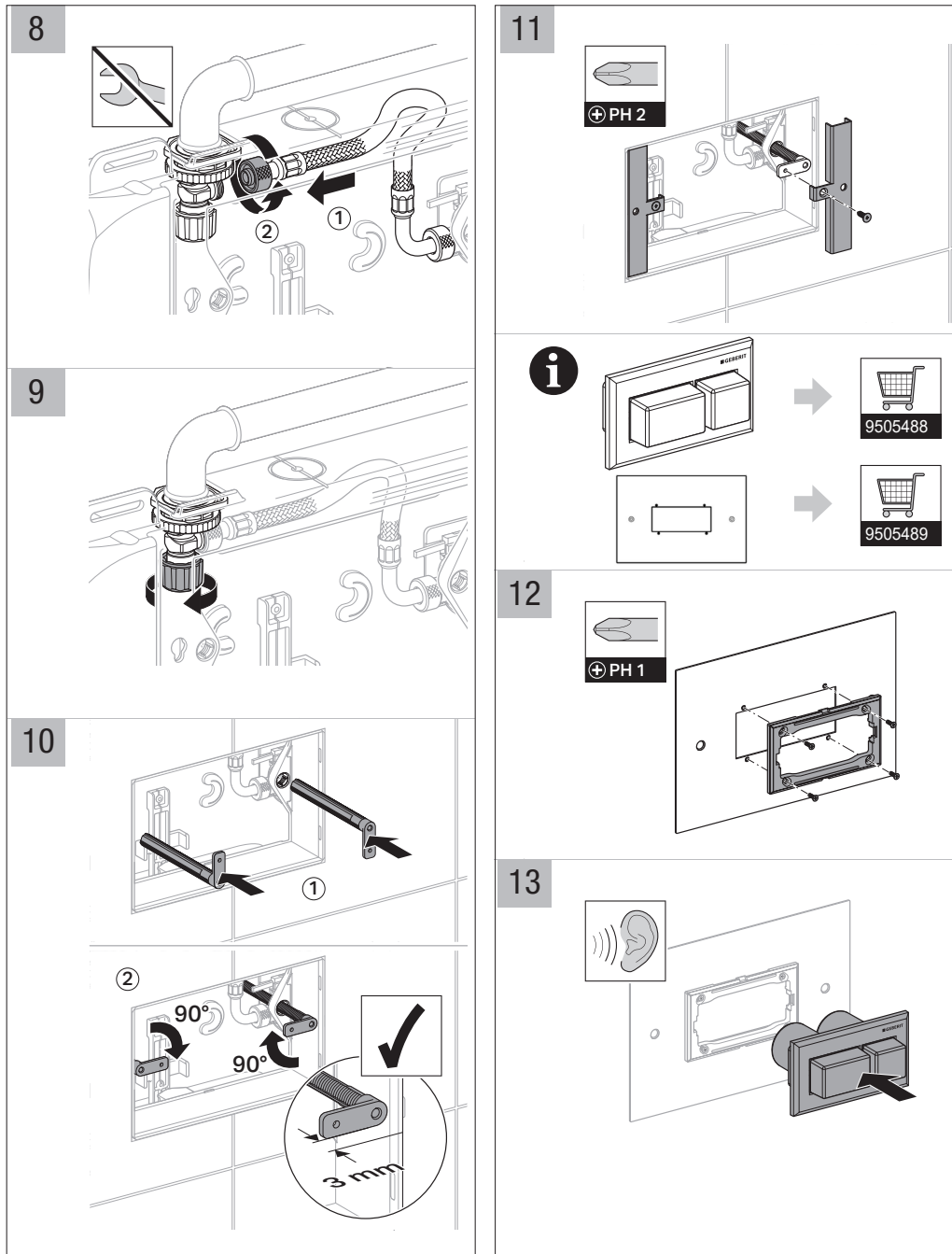
INWALL INSTALLATION WITH ACCESS PLATE 9505489 - SIGMA8 CISTERN



Plumbers, please ensure a copy of the installation instructions is left with the end user for future reference.

Sigma Pneumatic Raised Height Button & Service Access Panel (Optional)

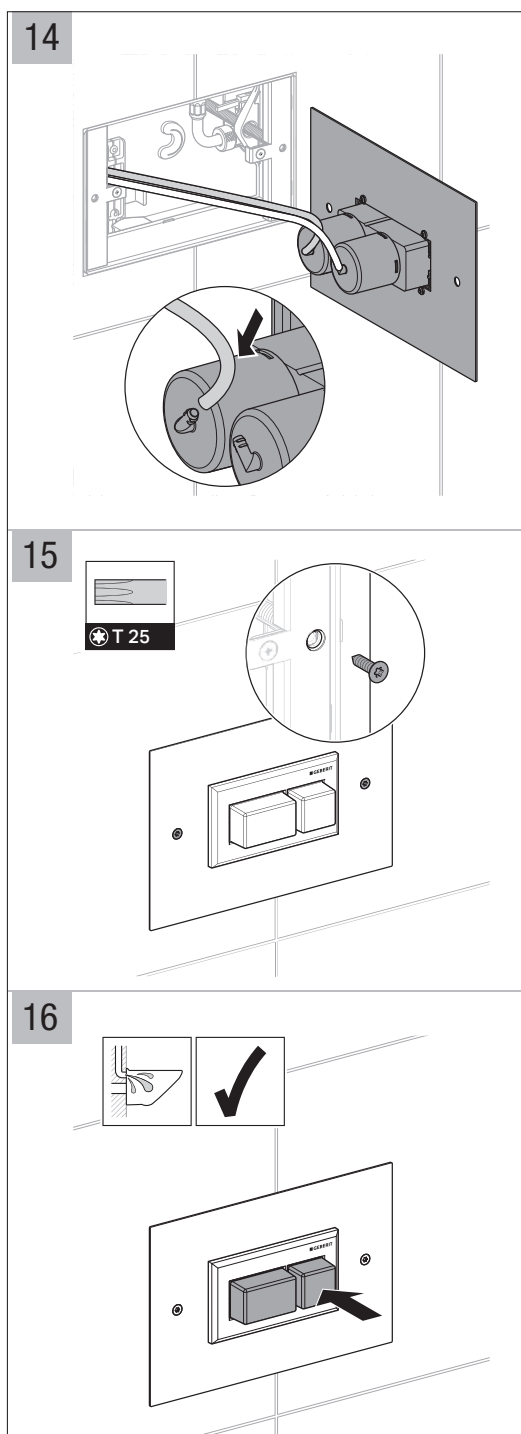
INWALL INSTALLATION WITH ACCESS PLATE 9505489 - SIGMA8 CISTERN



Plumbers, please ensure a copy of the installation instructions is left with the end user for future reference.

Sigma Pneumatic Raised Height Button & Service Access Panel (Optional)

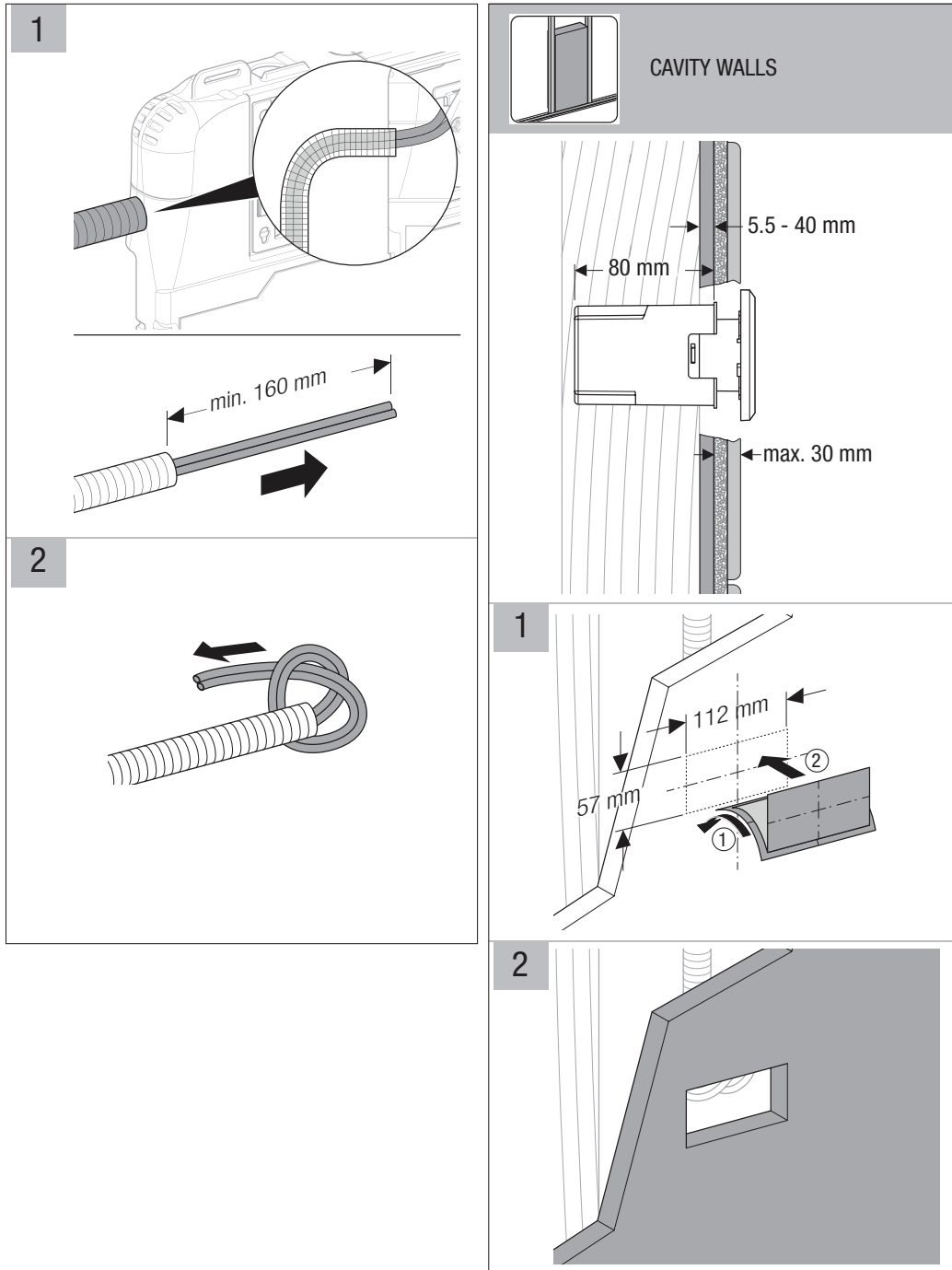
INWALL INSTALLATION WITH ACCESS PLATE 9505489 - SIGMA8 CISTERN



Plumbers, please ensure a copy of the installation instructions is left with the end user for future reference.

Sigma Pneumatic Raised Height Button & Service Access Panel (Optional)

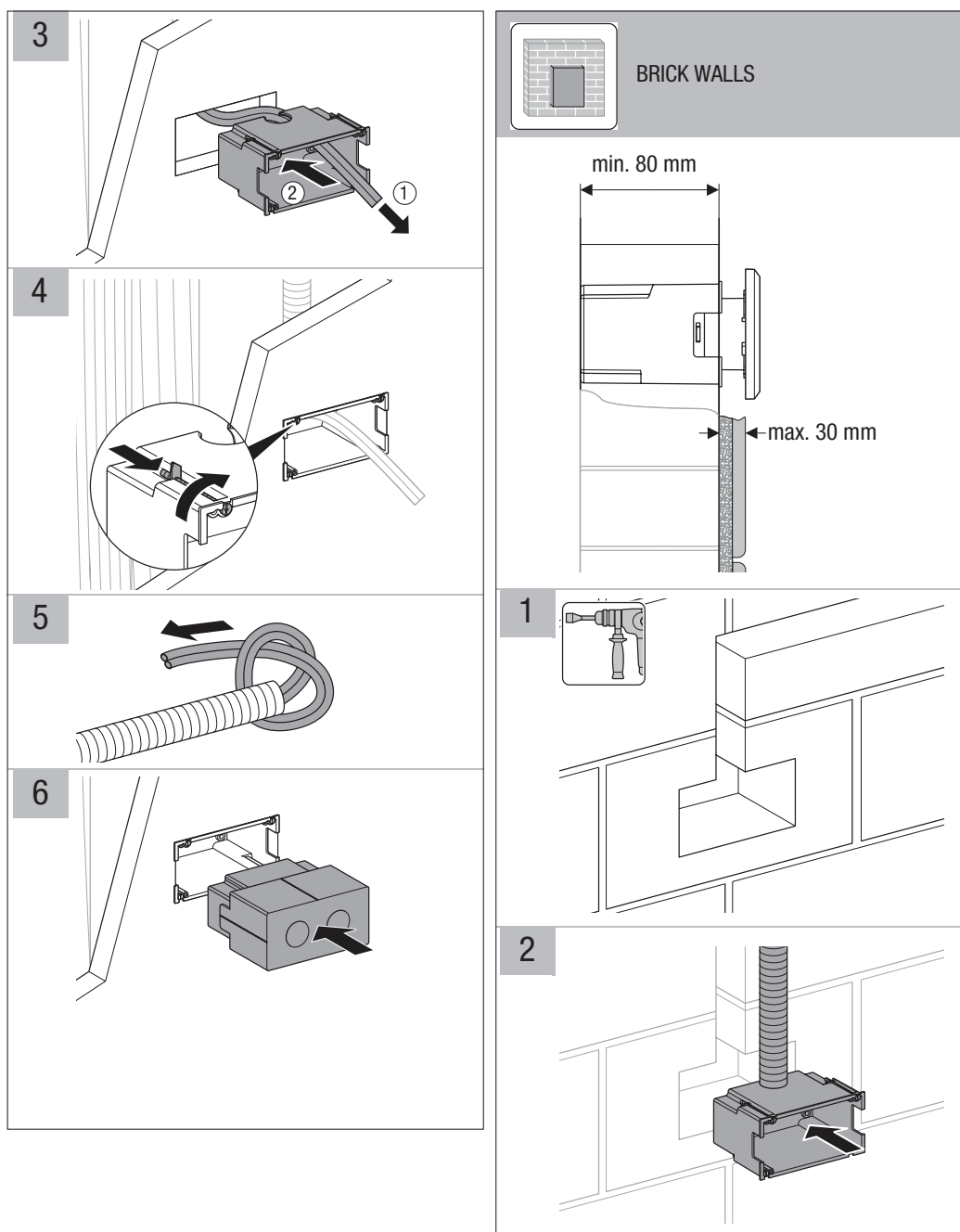
INSTALLATION INSTRUCTIONS – REMOTE BUTTON



Plumbers, please ensure a copy of the installation instructions is left with the end user for future reference.

Sigma Pneumatic Raised Height Button & Service Access Panel (Optional)

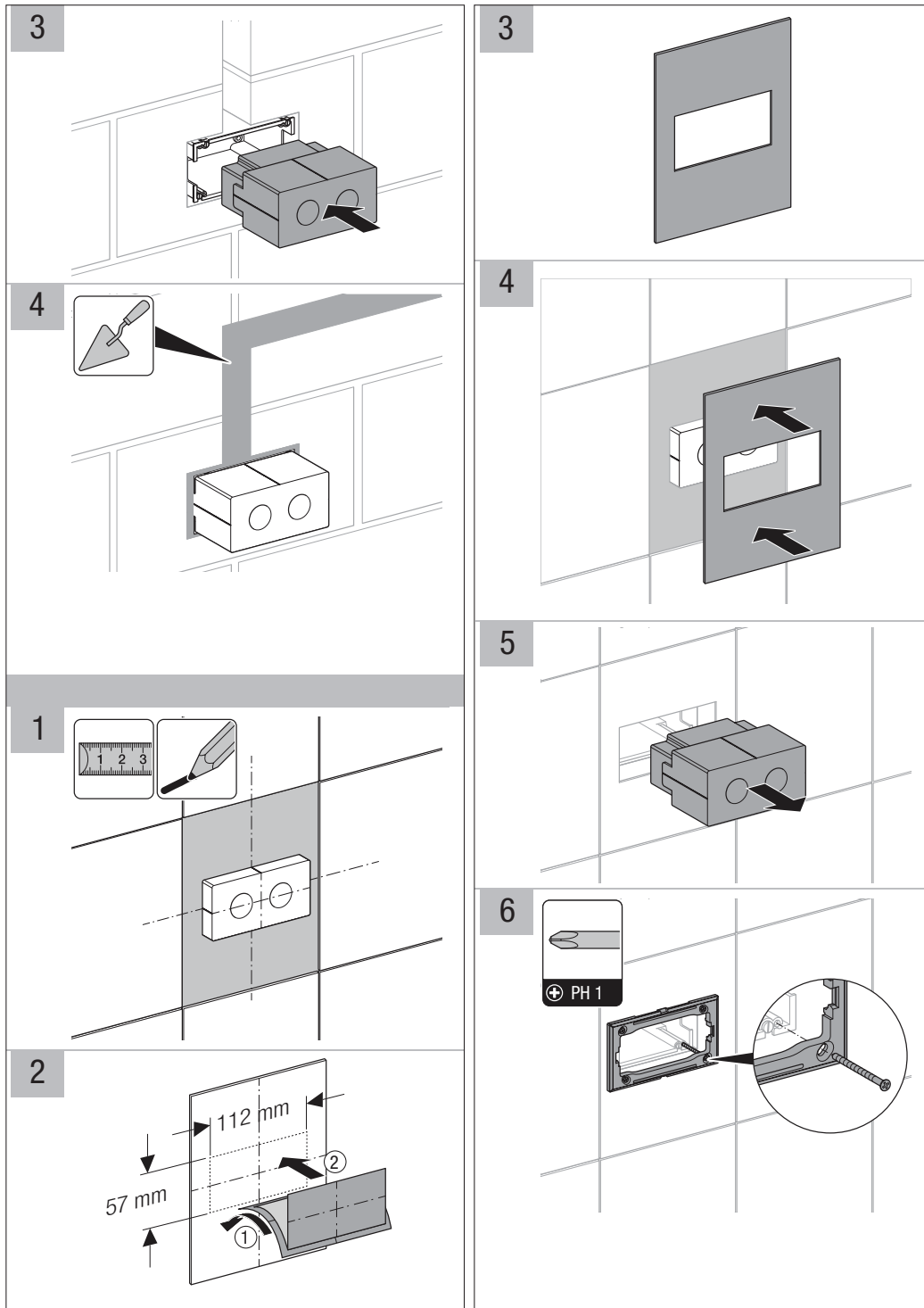
INSTALLATION INSTRUCTIONS – REMOTE BUTTON



Plumbers, please ensure a copy of the installation instructions is left with the end user for future reference.

Sigma Pneumatic Raised Height Button & Service Access Panel (Optional)

INSTALLATION INSTRUCTIONS – REMOTE BUTTON



Plumbers, please ensure a copy of the installation instructions is left with the end user for future reference.

Sigma Pneumatic Raised Height Button & Service Access Panel (Optional)

INSTALLATION INSTRUCTIONS – REMOTE BUTTON

7

8

9

10

Maintenance

i

X

Plumbers, please ensure a copy of the installation instructions is left with the end user for future reference.