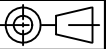
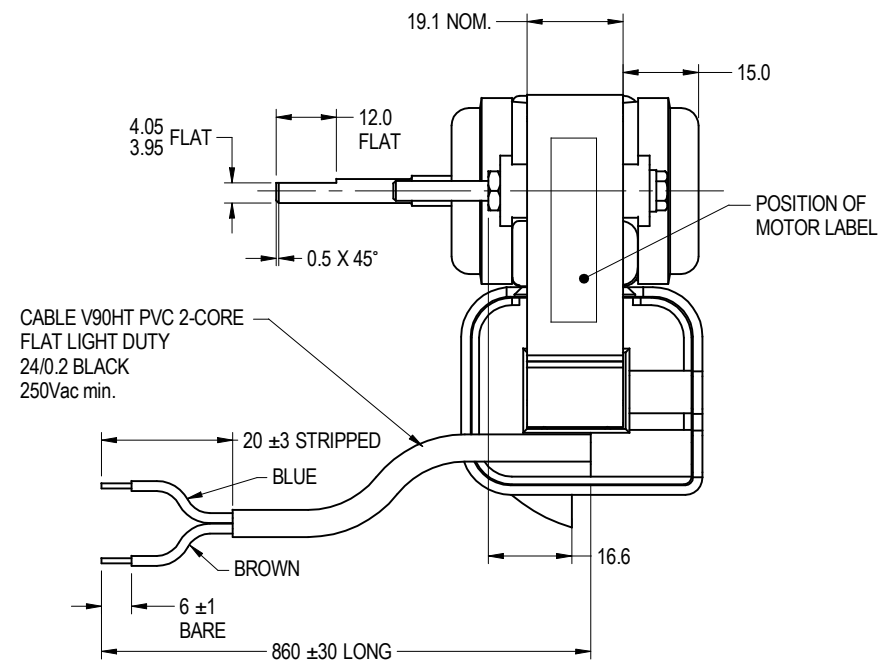
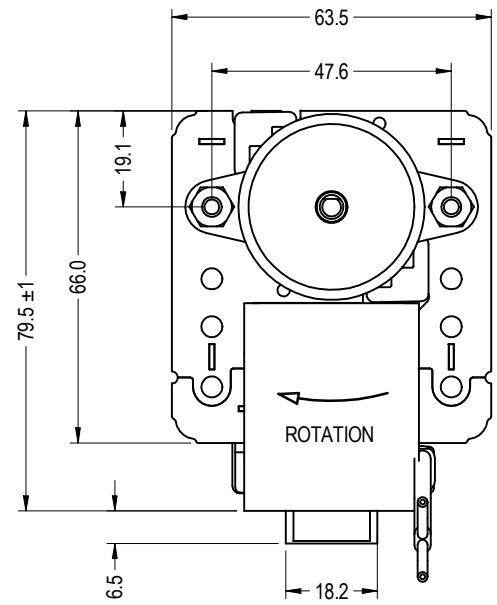
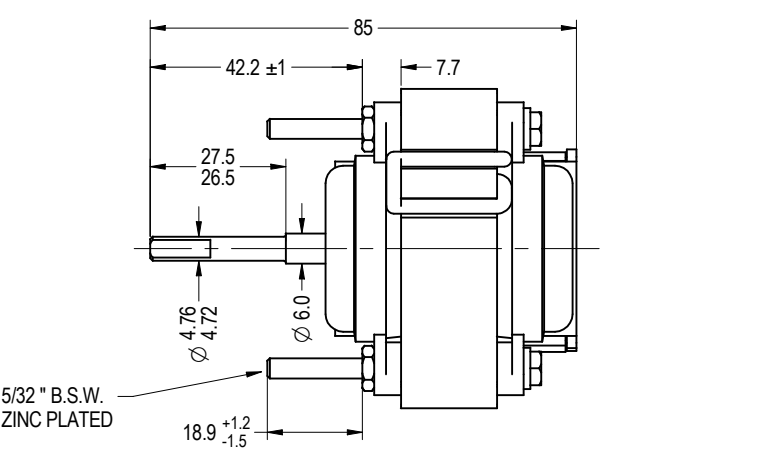
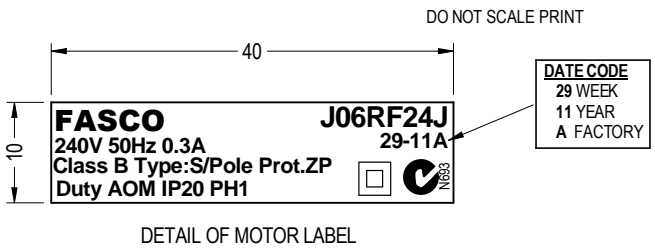


NOTE : FASCO AUSTRALIA IS HAPPY TO PROVIDE TECHNICAL ASSISTANCE TO OUR CUSTOMERS IN MANY AREAS. HOWEVER, SINCE FASCO AUSTRALIA IS NOT AWARE OF ALL DATA CONCERNING THE USE AND APPLICATION OF THIS MOTOR, THE SUITABILITY OF THE MOTOR FOR THE APPLICATION MUST BE DETERMINED BY AND IS THE RESPONSIBILITY OF THE CUSTOMER.



MOTOR SPECIFICATION

CUSTOMER	VARIOUS			
CUSTOMER P/N	----			
QR No.	----	CAPACITOR	uf / V	
POWER OUTPUT	4.3 W	START	----	
MOTOR TYPE	S/POLE	RUN	----	
SUPPLY	VOLTS	HERTZ	PHASE	POLES
	240	50	1	2
ENCLOSURE	CLIP ON BOBBIN			
SPEED (RPM) AT RATED OUTPUT	1300±100	WINDING TYPE	SINGLE SPEED	
ROTATION	CLOCKWISE			
INSULATION CLASS	B	DUTY	AOM	
THERMAL PROTECTION	ZP			
RATED CURRENT	0.3A			
APPLICATION	FAN FRIVE			
MOUNTING	BOBBIN & SCREWS			
BEARING & LUBRICATION	626ZZ 140°C GREASE			
SUPPLY LEAD	COLOUR	BLACK		
	LENGTH	AS SHOWN		
	TERMINALS	----		
	Q.C. HOUSING	----		
<input checked="" type="checkbox"/> MULTI STRAND				
<input type="checkbox"/> SINGLE CORE				
EARTH PROVISION	----			
BASIC BUILD SPECIFICATION	----			
PERFORMANCE SPECIFICATION	SPM53016-01			
SHAFT MATERIAL	MILD STEEL			
CONNECTION DIAGRAM		PAINT SPEC	CLEAR VARNISH	



PACKAGING
20 - MOTORS PER BOX

ADDITIONAL PROTECTION :-
CORROSION INHIBITING PAPER IN EACH BOX
SHAFT COATED WITH RUST INHIBITOR

PALLET AND BOX LABELS TO HAVE:-
FASCO NUMBER
DATE OF MANUFACTURE
QUANTITY
WEIGHT

SPECIAL REQUIREMENTS
PACK PARTS IN PLASTIC BAG AND ATTACH TO MOTOR LEAD.
2 - NUT 5/32" B.S.W. 5/16" A/F HEX ZINC PLATED
2 - 4 DIA INTERNAL SHAKEPROOF WASHER ZINC PLATED.

DIMENSIONS IN mm UNLESS OTHERWISE SPECIFIED

GENERAL TOLERANCES
LINEAR: X = ±1.0
 XX = ±0.25
 XXX = ±0.1
ANGULAR: X = 2°
 XX = ±0.5°

SURFACE FINISHES MAX 3.0 MICRO METRES
SYMBOLS PER A.S. 1100

This drawing remains the property of Fasco Australia Pty. Ltd. No part or parts of this drawing may be reproduced without written permission.

MOTL		
FINISH		
DRAWN	MURFETTR	20/10/11
CHECKED	BALCHANT	13/01/12
RELEASED	BALCHANT	13/01/12
SCALE	1:1	

FASCO AUSTRALIA
A.B.N. 76.000 010 944
1/14 Monterey Road Dandenong Victoria

FRAME	.MOTOR	
STATUS	240V 50HZ 1SP CW	
SHEET	DWG. NO.	REVISION
A3	J06RF24J	A

MIC No. 003699
By: MURFETTR Date: 10/11/11
M/C FIRST SOLID EDGE DRAWING Note: