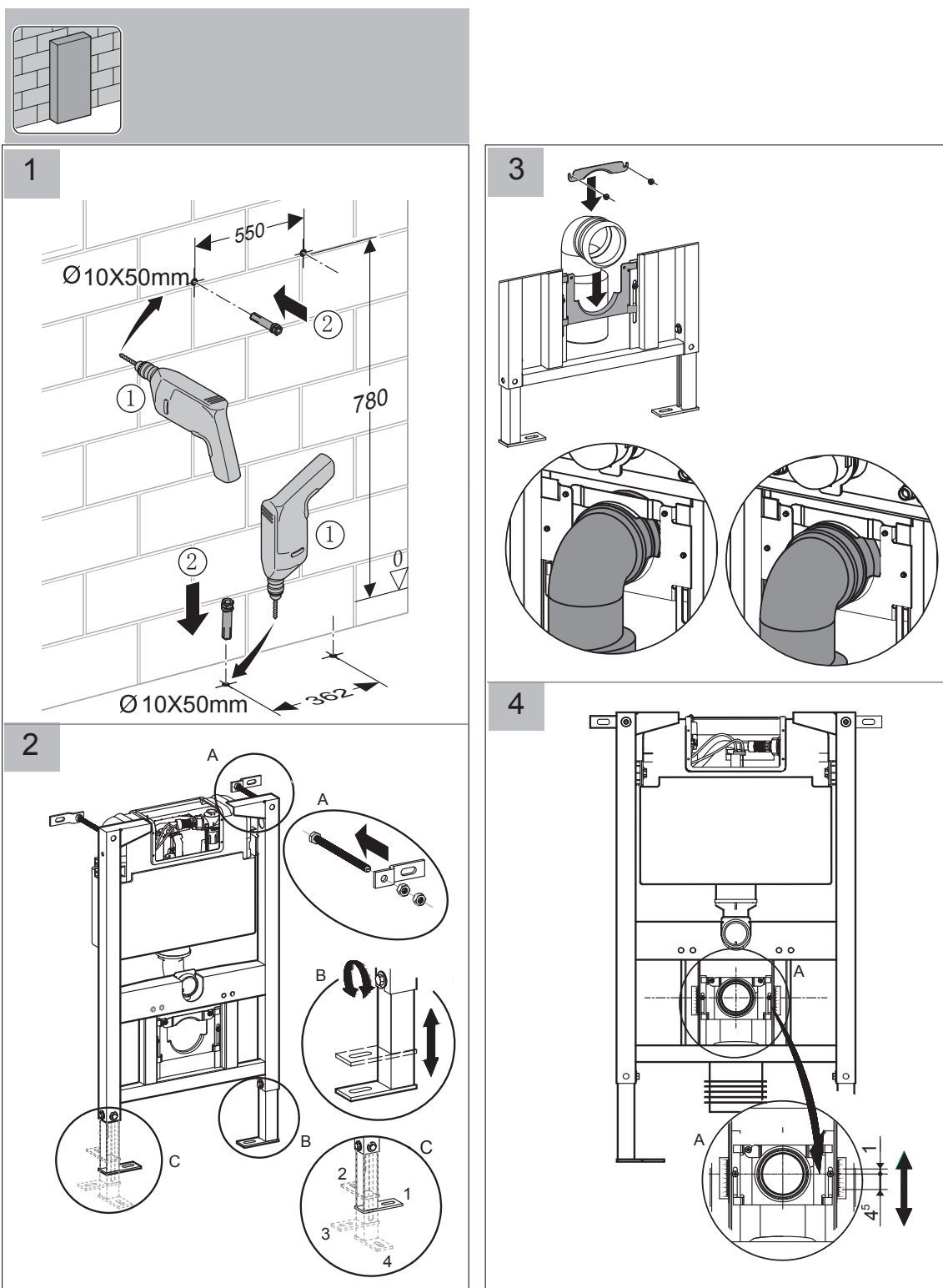


HIDEAWAY PLUS

UNDERCOUNTER CISTERN (WALL HUNG PAN)

INSTALLATION INSTRUCTIONS

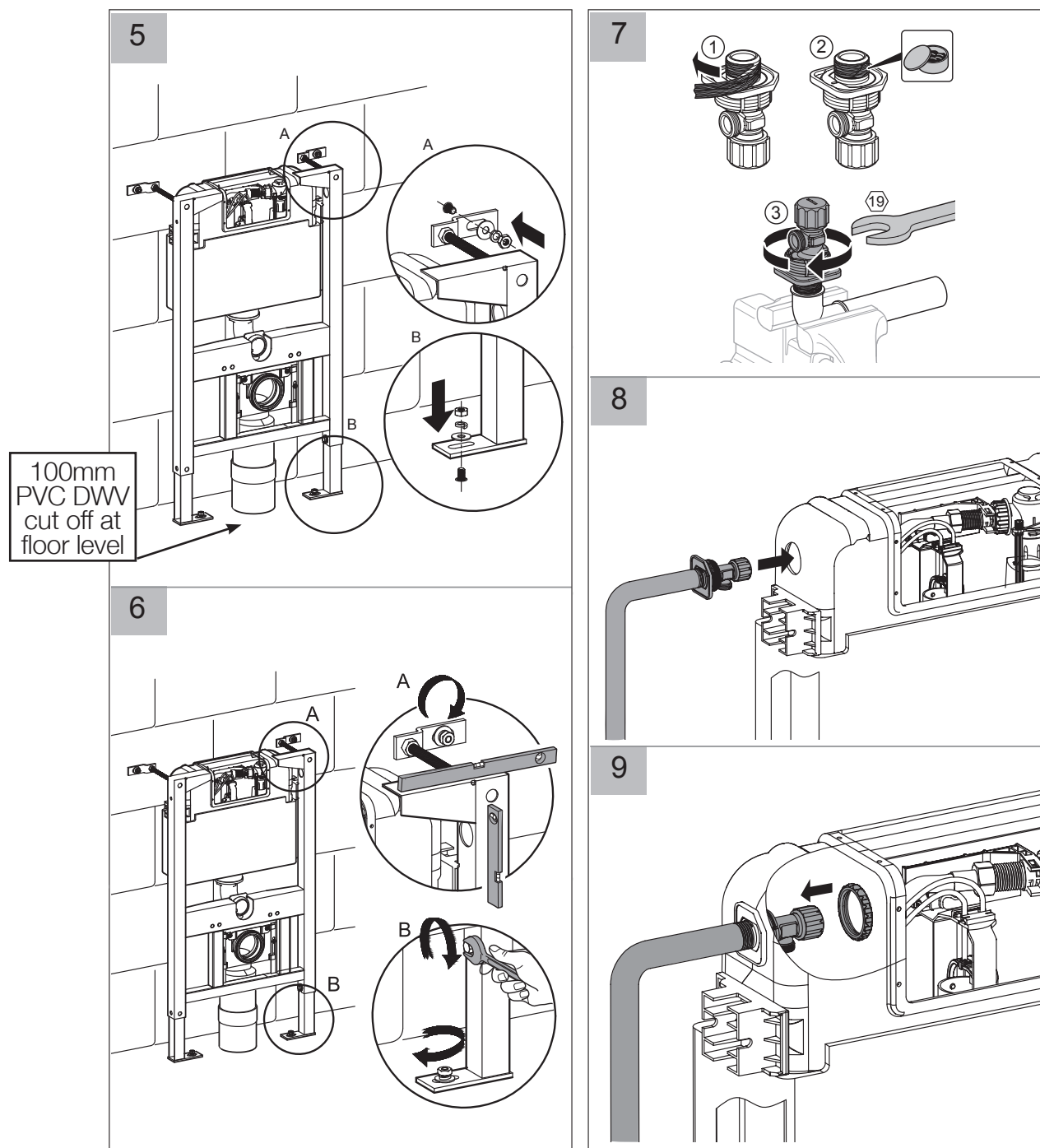
Please note: For dimensions from finished floor level to pan inlet and outlet, refer to your pan specifications. **Important:** the front face of the pan bracket must be flush with the front face of the studs. Bracket is suitable for use on non compressible wall materials only. Installer must ensure that the frame is fixed appropriately to structure to be able to support 400kg on the pan.



Plumbers, please ensure a copy of the installation instructions is left with the end user for future reference

HIDEAWAY PLUS

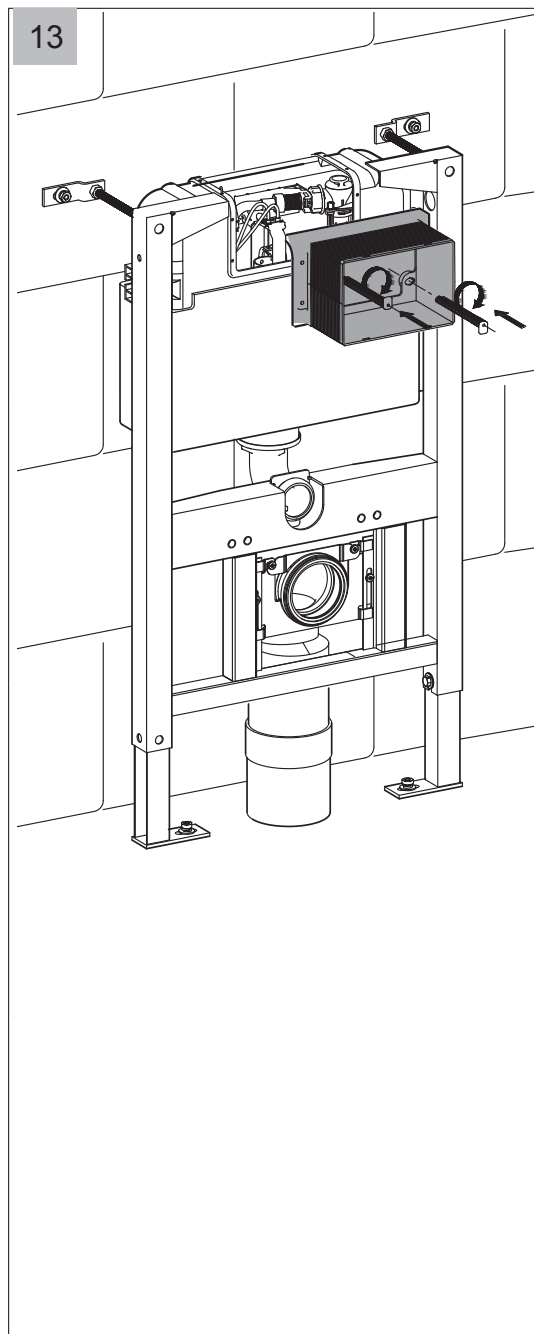
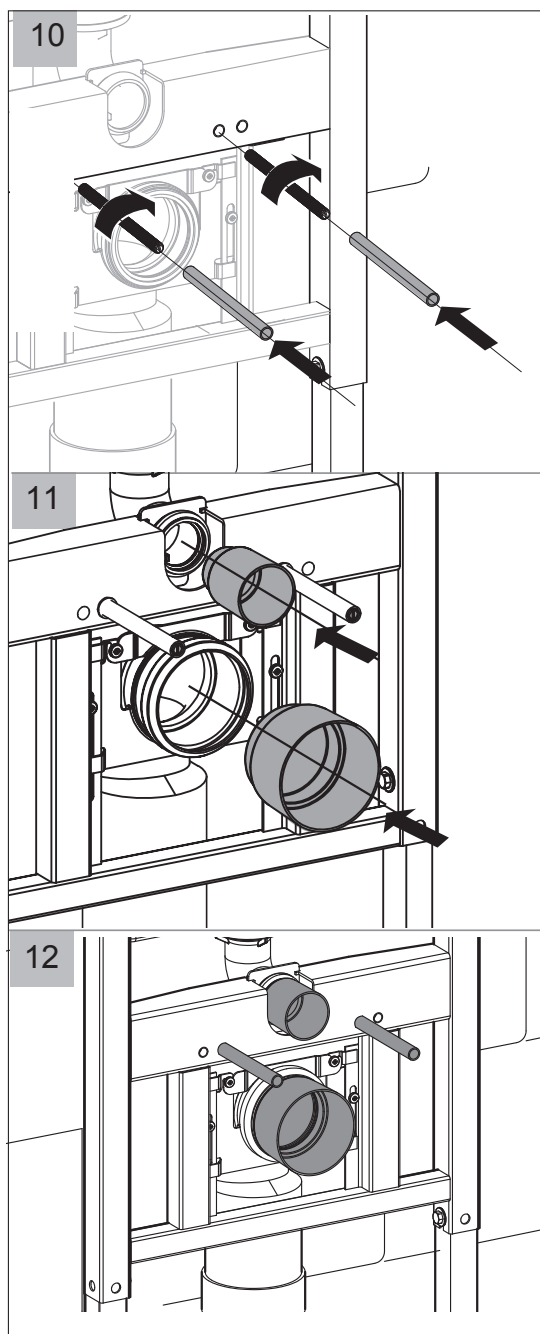
UNDERCOUNTER CISTERN (WALL HUNG PAN)



Plumbers, please ensure a copy of the installation instructions is left with the end user for future reference

HIDEAWAY PLUS

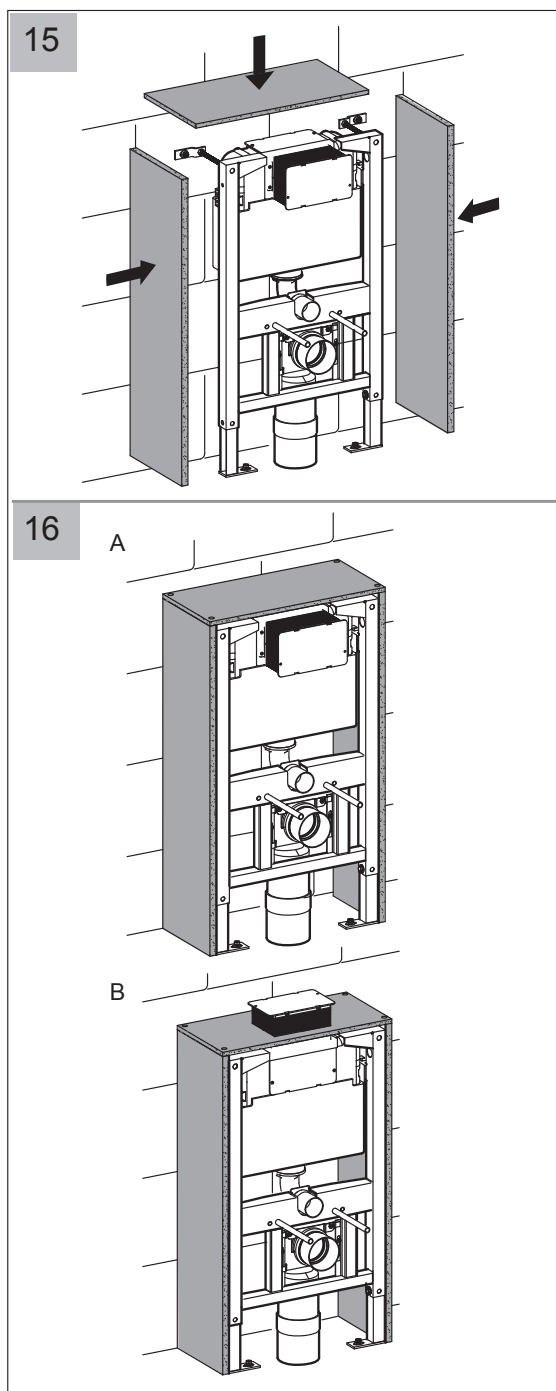
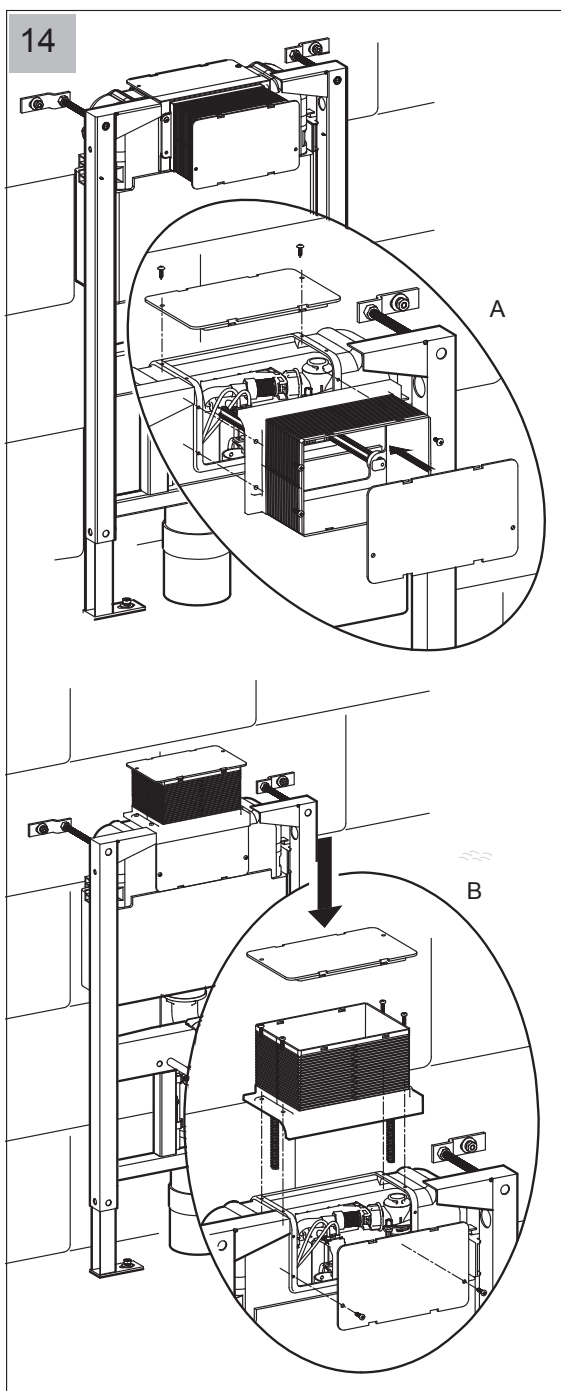
UNDERCOUNTER CISTERN (WALL HUNG PAN)



Plumbers, please ensure a copy of the installation instructions is left with the end user for future reference

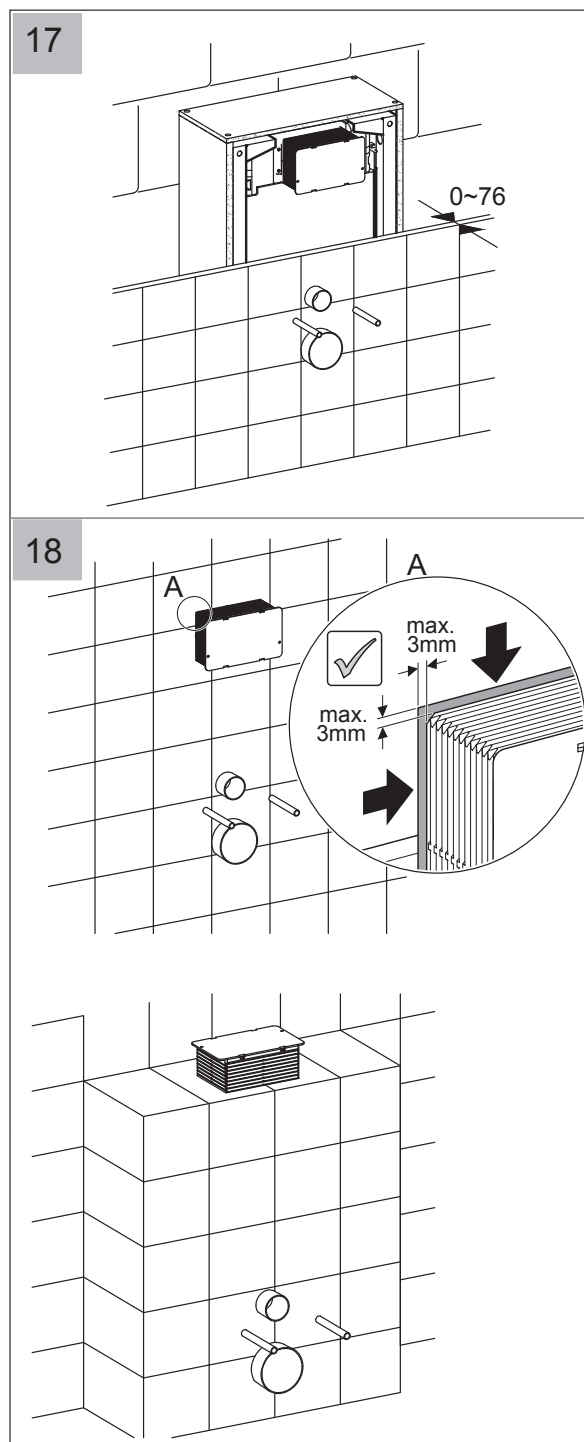
HIDEAWAY PLUS

UNDERCOUNTER CISTERN (WALL HUNG PAN)



Important: the front face of the pan bracket must be flush with the front face of the studs. Bracket is suitable for use on non compressible wall materials only. Installer must ensure that the frame is fixed appropriately to structure to be able to support 400kg on the pan.

HIDEAWAY PLUS UNDERCOUNTER CISTERN (WALL HUNG PAN)

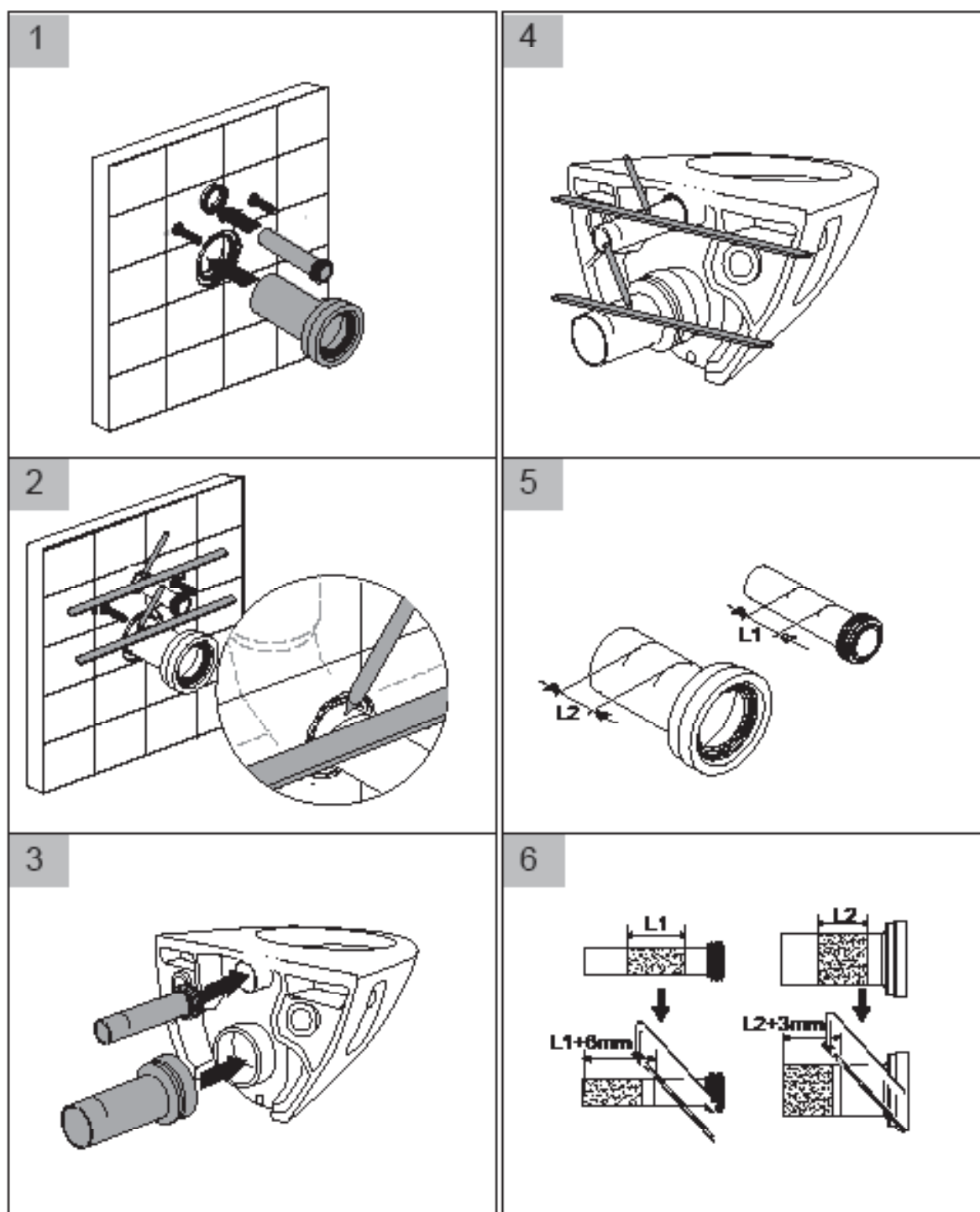


For button installation,
refer to individual
button instructions

HIDEAWAY PLUS

UNDERCOUNTER CISTERN (WALL HUNG PAN)

Note: Refer to installation instructions for your selected pan



HIDEAWAY PLUS

UNDERCOUNTER CISTERN (WALL HUNG PAN)

