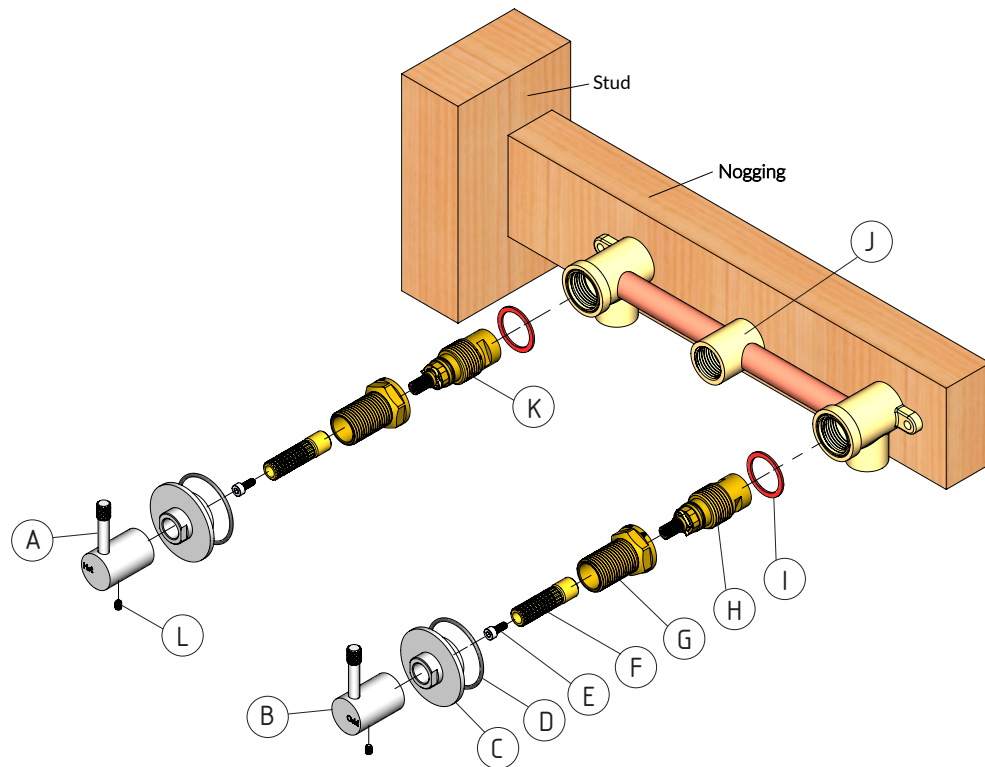


# Scala Nova

## Scala Nova Wall Top Assemblies

SUSSEX



**Product codes:**

SNWTA.01

**Product parts:**

- (A) Hot Handle
- (B) Cold Handle
- (C) Handle Dress Ring
- (D) Dress Ring O-Ring
- (E) Spindle Extension Screw
- (F) Spindle Extension
- (G) Spindle Lock Nut
- (H) Cold Spindle
- (I) Fibre Washer
- (J) In-Wall Body (not included)
- (K) Hot Spindle
- (L) Set Screw

**Plumbers note:**

- Product is to be installed by a Licensed Plumber in accordance with AS/NZS 3500:2021
- Recommended working water pressure 300 - 500 Kpa. Maximum water temperature is 65°C
- After installation, ensure that product functions correctly without leaks.
- Please ensure a copy of the Installation Instructions are left with the end user for future reference.

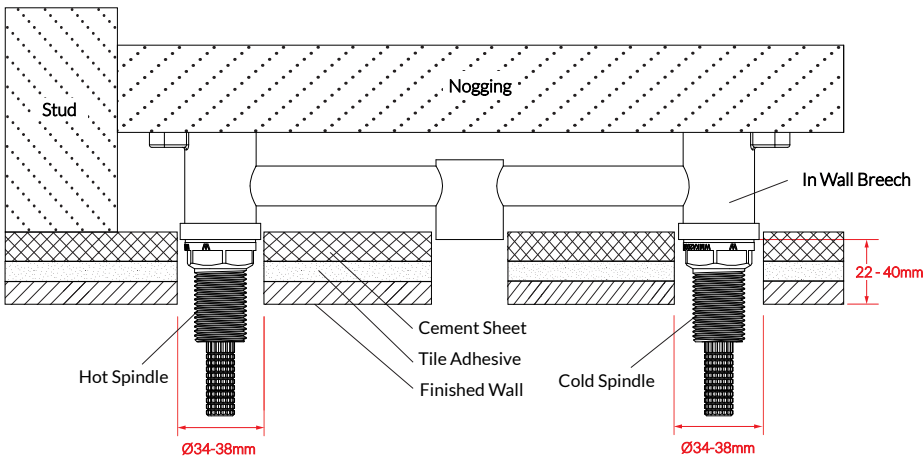
## Rough-in

### New Breech:

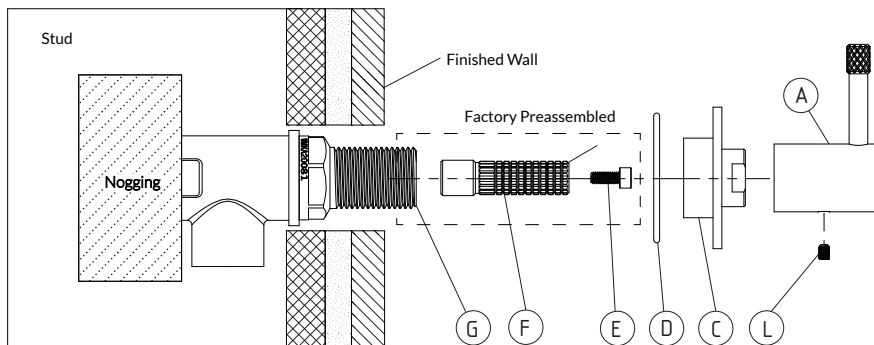
Based on desired wall covering thickness and height of the In-Wall Breech (J), calculate the Nogging set back so that the front face of the breech is 22mm to 40mm behind the finished wall. Secure the In-Wall Breech (J) to the Nogging. Ensure the breech is level by checking with a spirit level. Flush all water feed lines. All lines must be free from any dirt and debris before connecting to the In-Wall Breech (J). Once all water connections are made, check Hot/Cold water flow. Leave the spindles in the closed position. Store remaining parts in a safe place until wall coverings have been completed and final fit-off is required.

### Retrofitting an existing breech:

Check if the front face of the In Wall Breech (J) is 22mm to 40mm behind the finished wall, then proceed with the installation. Please contact manufacturer if the distance is outside the range specified.

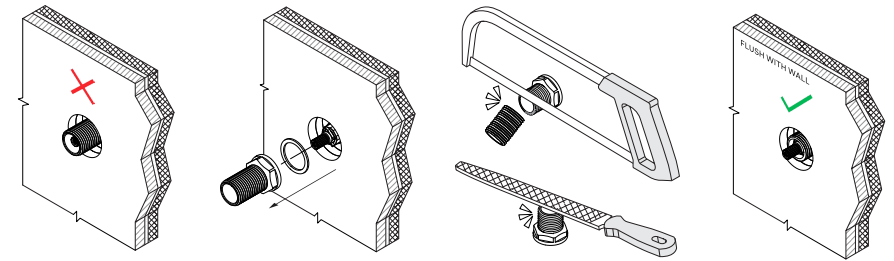


## Mixer Handle Fit Off

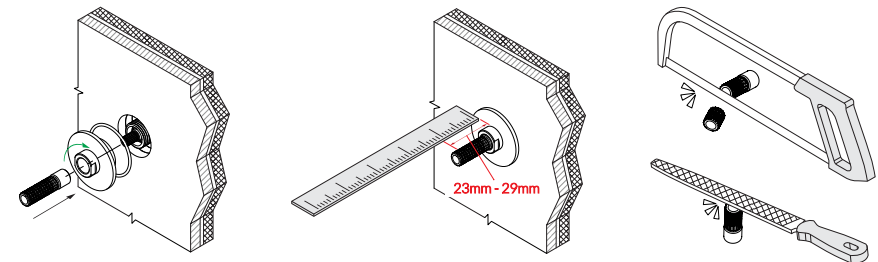


## Handle Fit Off

1. Disassemble Spindle Extension (F) and Screw (E).
2. The Spindle Lock Nut (G) needs to be flush or just below the finished wall. Unscrew, trim and deburr if necessary.



3. Fit the Handle Dress Ring (C) and O-Ring (D) onto the Spindle Lock Nut (G) until it reaches the Wall covering. Apply a small amount of sealant on the back of the Handle Dress Ring (C) if the wall is uneven.
4. Loosely fit the Spindle Extension (F) onto the Spindle (H or K), check if the distance between the end of Spindle Extension (F) and Handle Dress Ring (C) is between 23mm and 29mm. Trim then deburr if necessary.



5. Turn Spindles (H & K) to OFF position: HOT = FULL TURN CLOCKWISE and COLD = FULL TURN ANTICLOCKWISE.
6. Test fit Hot and Cold Handles (A & B), adjust straightness of the handle by rotating Spindle Extension (F) and tighten Spindle Extension Screw (E) and Handle Set Screw (O) once satisfied with the handle position.

