

Posh

Posh Canterbury Accessories Chrome



Toilet Roll Holder



Towel Ring



Soap Dish



Robe Hook



Shower Shelf



Single Towel Rail 300mm



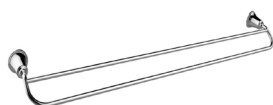
Single Towel Rail 750mm



Single Towel Rail 900mm



Double Towel Rail 300mm



Double Towel Rail 750mm



Double Towel Rail 900mm

SPECIFICATIONS

Recommended Use	Domestic, Commercial, Hotel
Colour	Chrome, Brushed Gold, Matte Black

WARRANTY

Warranty - Domestic Use	10 Years
Spare Parts & Labour	12 Months

Please refer to Warranty Page for full Terms and Conditions

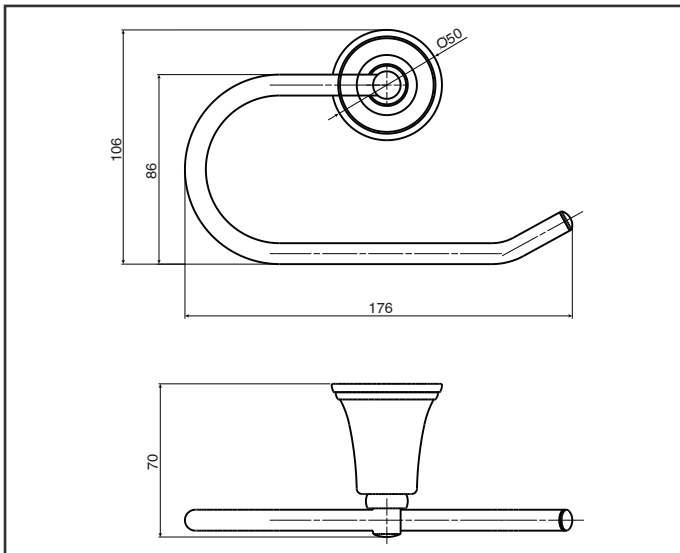
Disclaimer: Products in this specification manual must by regulation be installed by licensed and registered trade people. The manufacturer/distributor reserves the right to vary specifications or delete models from their range without prior notification. Dimensions are nominal measurements only. Dimensions and set-outs listed are correct at time of publication however the manufacturer/distributor takes no responsibility for printing errors.

Published 03/05/2018

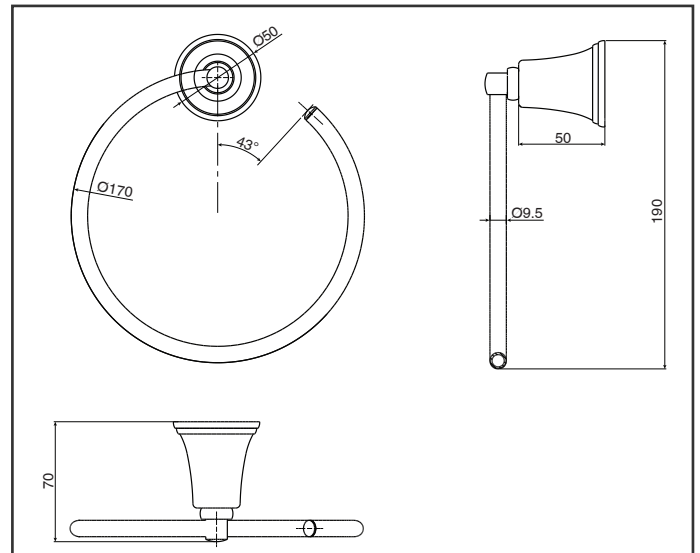
To see the complete Posh range go to
www.reece.com.au/bathrooms



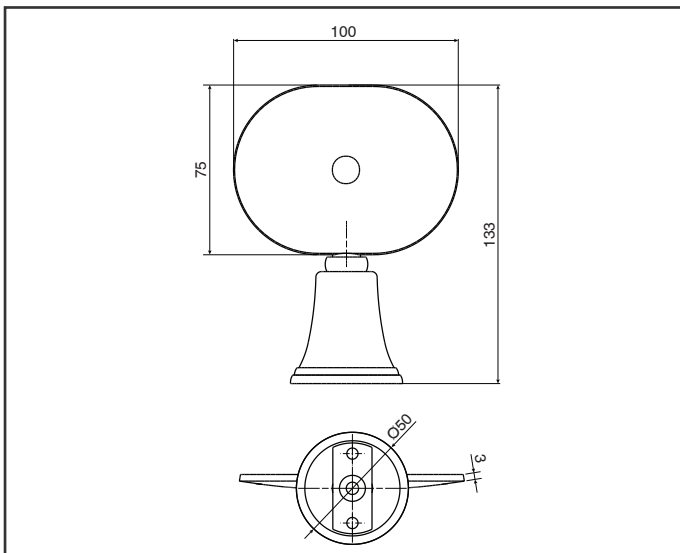
Posh Canterbury Accessories Chrome



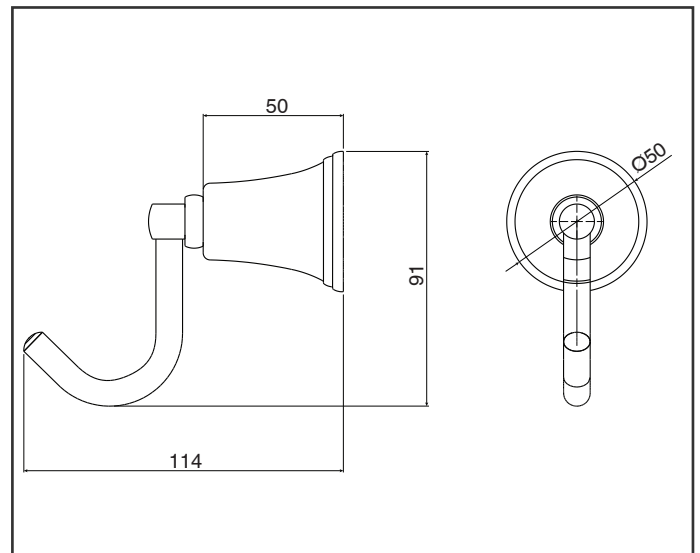
Toilet Roll Holder



Towel Ring



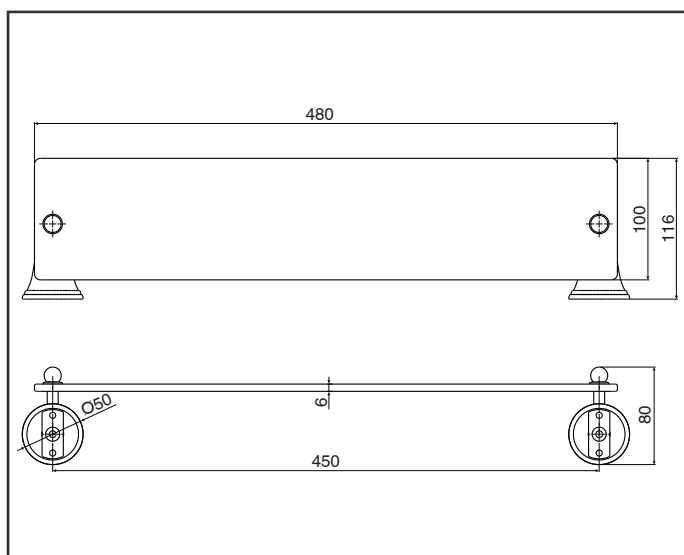
Soap Dish



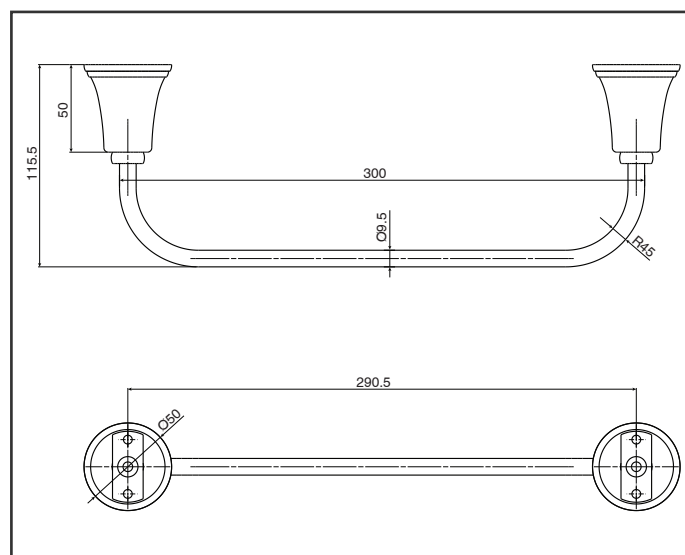
Robe Hook

Posh

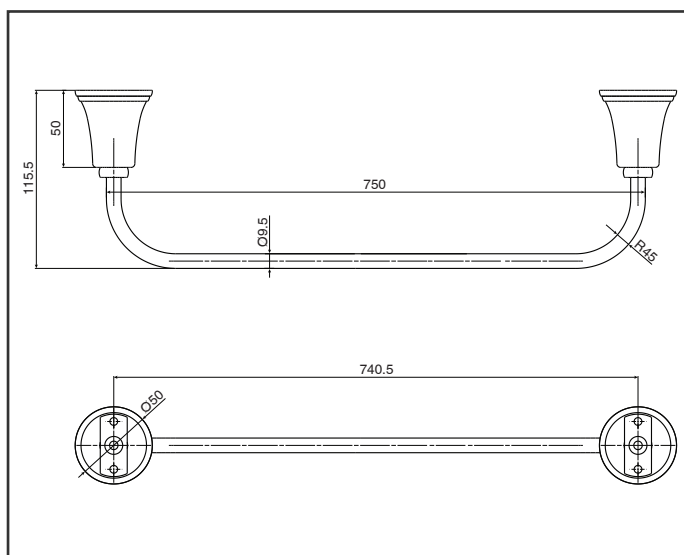
Posh Canterbury Accessories Chrome



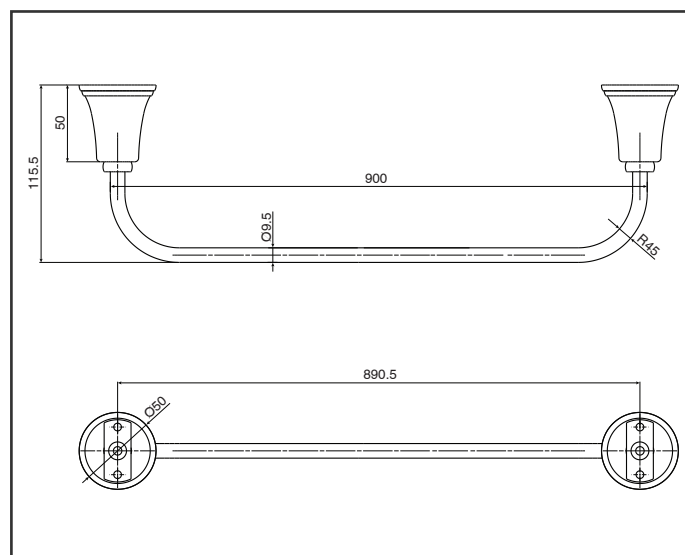
Shower Shelf



Single Towel Rail 300mm

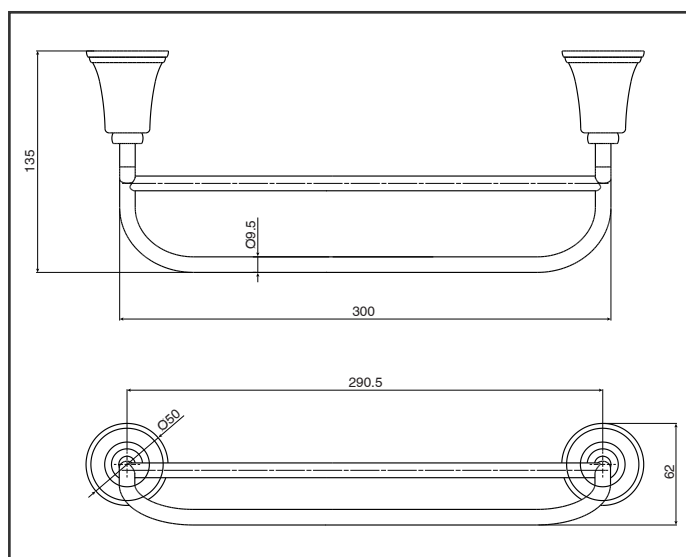


Single Towel Rail 750mm

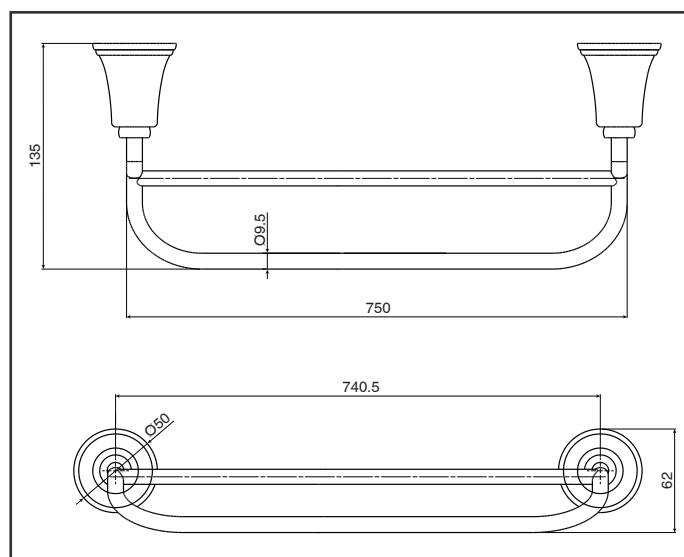


Single Towel Rail 900mm

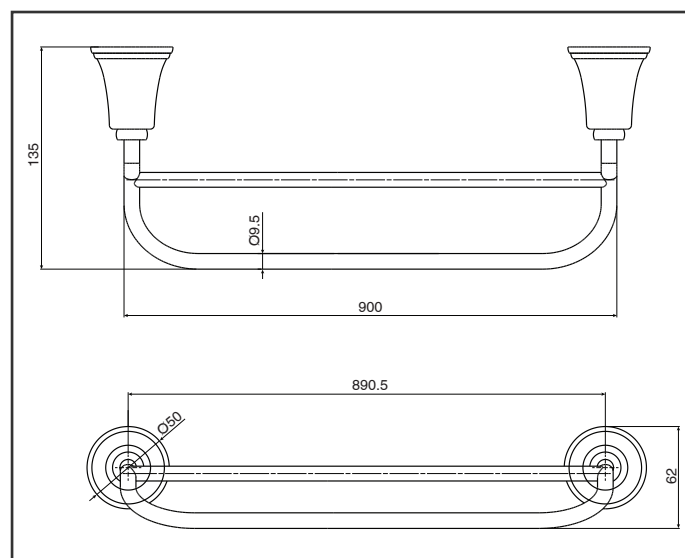
Posh Canterbury Accessories Chrome



Double Towel Rail 300mm



Double Towel Rail 750mm



Double Towel Rail 900mm

NOTE:

Wall materials vary. The accessory fixing kit supplied is suited for solid wall fixing. For timber framed walls, please ensure the accessory is fixed to a stud/noggin behind the wall. Where stud/noggin is not available, please use suitable hollow wall fixing.

CLEANING RECOMMENDATIONS:

We recommend the use of soapy water or approved cleaners. This product should not be cleaned with abrasive materials. Damage caused by any improper treatment is not covered by the product warranty. Refer to Warranty Conditions.