

AMERICAN STANDARD

CYGNET OH CLOSE COUPLED BACK TO WALL TOILET SUITE (BOTTOM INLET)

INSTALLATION INSTRUCTIONS

Unit: mm

1

2

3

4

5a

5b

6a

ROUGHING - IN (A)	CONNECTOR CUTOUT (B)
140-150 mm.	10 mm.
151-159 mm.	20 mm.

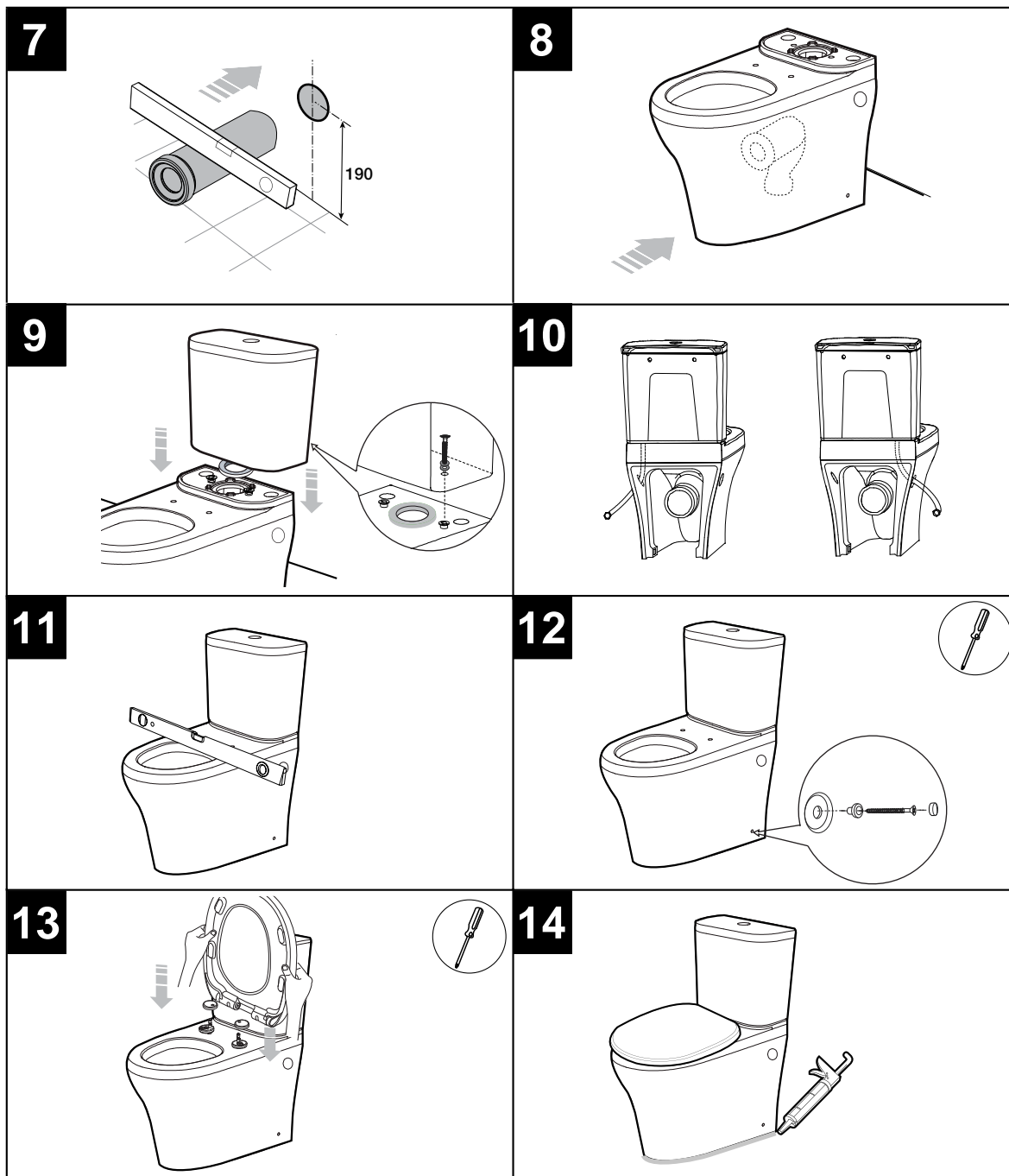
6b

ROUGHING - IN (A)	CONNECTOR CUTOUT (B)	ROUGHING - IN (A)	CONNECTOR CUTOUT (B)
160-170 mm.	30 mm.	211-220 mm.	80 mm.
171-180 mm.	40 mm.	221-230 mm.	90 mm.
181-190 mm.	50 mm.	231-240 mm.	100 mm.
191-200 mm.	60 mm.	241-250 mm.	110 mm.
201-210 mm.	70 mm.	C=116 - (A-160)	

AMERICAN STANDARD

CYGNET OH CLOSE COUPLED BACK TO WALL TOILET SUITE (BACK INLET)

INSTALLATION INSTRUCTIONS



Note: Cistern Flexi Hose Connection and Stop Valve not included in package.