

Valve and Fitting Product Guide



Valve and Fitting

Discover the all new Dimax range of ductile iron valves and fittings - with an even wider selection of quality products in the coming months.

All Dimax valves and fittings are manufactured to the highest tolerances specifically for Australian conditions, and tested at our in-house testing lab. So when you choose Dimax, you can have complete confidence that you're choosing unrivaled quality.



Index

Valves

Resilient seated gate valves	5
Check valves	9
Hydrant valves	9
Butterfly valves	10

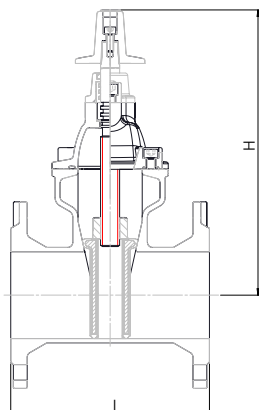
Fittings

Bends	11
Connectors	13
Hydrant risers	13
Tees	14
Tapers	14
Ends	15
Strainers	15



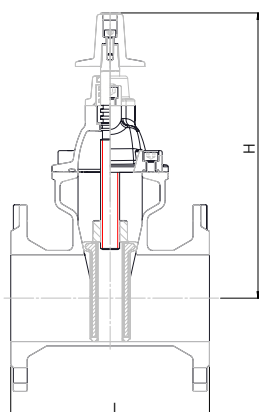
Valves





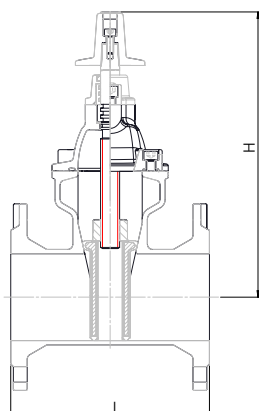
**Flanged B5 Valve -
PN16 with Anti-Clockwise Close and EPDM Coating**

Code	Size	H	L	Weight
1281650	80	315	203	13.5
1281652	100	340	229	18
1281654	150	435	267	37
1281656	200	548	292	57
1281684	225	670	305	85
1281658	250	660	330	90.5
1281660	300	740	356	135
1281901	350	960	381	225
1281903	375	1025	381	250
1281905	400	1025	406	260
1281907	450	1145	432	400
1281909	500	1230	457	500
1281911	600	1360	508	710



**Flanged B5 Valve -
PN16 with Clockwise Close and EPDM Coating**

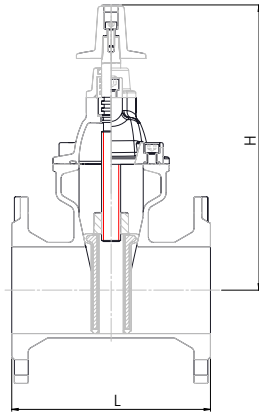
Code	Size	H	L	Weight
1281651	80	315	203	13.5
1281653	100	340	229	18
1281655	150	435	267	37
1281657	200	548	292	57
1281685	225	670	305	85
1281659	250	660	330	90.5
1281661	300	740	356	135
1281902	350	960	381	225
1281904	375	1025	381	250
1281906	400	1025	406	260
1281908	450	1145	432	400
1281910	500	1230	457	500
1281912	600	1360	508	710



**Flanged B6 Valve -
PN25 with Anti-Clockwise Close and EPDM Coating**

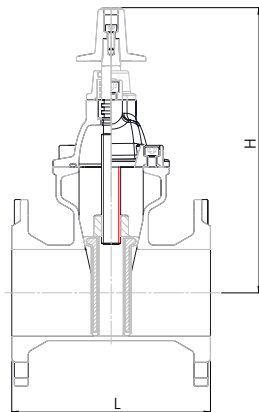
Code	Size	H	L	Weight
1281895	80	315	203	17.5
1281897	100	340	229	22
1281899	150	435	267	42
1281931	200	548	292	60
1281933	250	660	330	95
1281935	300	740	356	145

Resilient seated gate valves



Flanged B6 Valve - PN25 with Clockwise Close and EPDM Coating

Code	Size	H	L	Weight
1281896	80	315	203	17.5
1281898	100	340	229	22
1281900	150	435	267	42
1281932	200	548	292	60
1281934	250	660	330	95
1281936	300	740	356	145



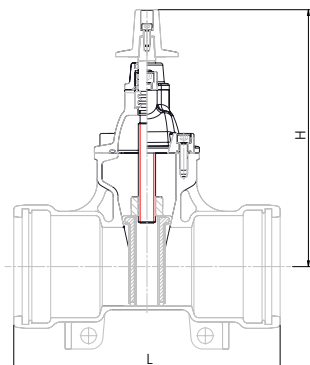
Flanged Table E Valve - PN16 with Clockwise Close and EPDM Coating

Code	Size	H	L	Weight
1281891	100	340	229	20
1281891	150	435	267	40
1281892	200	548	292	57
1281893	250	660	330	90.5
1281894	300	740	356	135



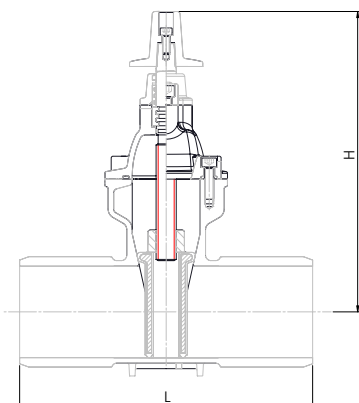
Socketed Valve - PN16 with Anti-Clockwise Close and EPDM Coating

Code	Size	H	L	Weight
1281662	100	330	340	17
1281664	150	435	370	32.5
1282040	200	545	410	65
1282042	225	670	440	95
1282044	250	660	450	100
1282046	300	740	485	145



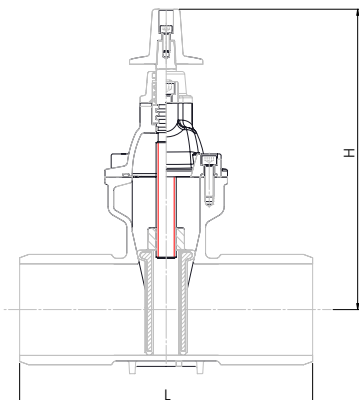
**Socketed Valve -
PN16 with Clockwise Close and EPDM Coating**

Code	Size	H	L	Weight
1281663	100	330	340	17
1281665	150	435	370	32.5
1282041	200	545	410	65
1282043	225	670	440	95
1282045	250	660	450	100
1282047	300	740	485	145



**Spigoted Valve -
PN16 with Anti-Clockwise Close and EPDM Coating**

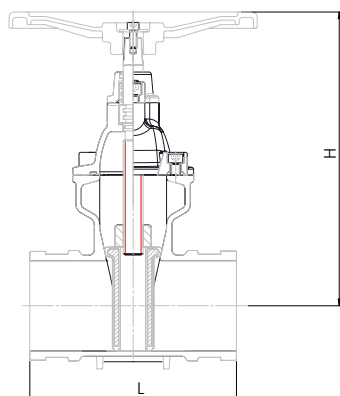
Code	Size	H	L	Weight
1281666	100	340	320	16
1281668	150	435	360	32
1282048	200	545	410	60
1282050	225	670	430	92
1282052	250	660	430	95
1282054	300	740	450	140



**Spigoted Valve -
PN16 with Clockwise Close and EPDM Coating**

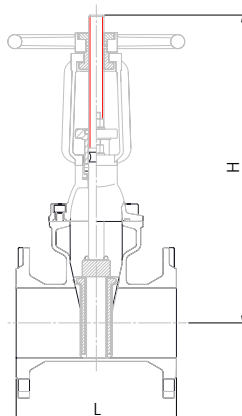
Code	Size	H	L	Weight
1281667	100	340	320	16
1281669	150	435	360	32
1282049	200	545	410	60
1282051	225	670	430	92
1282053	250	660	430	95
1282055	300	740	450	140

Resilient seated gate valves



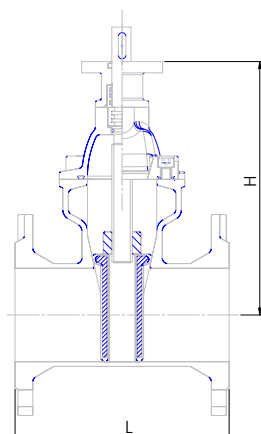
Shouldered End Valve - PN25 with Clockwise Close, Handwheel and EPDM Coating

Code	Size	H	L	Weight
1281686	100	325	229	16
1281881	150	435	267	29



OS&Y Valve - PN16 Rising Spindle and EPDM Coating

Code	Size	Table	H	L
1282001	80	E	426	203
1282002	100	E	455	229
1282003	150	E	615	267
1282004	200	E	770	292
1282005	250	E	965	330
1282006	300	E	1050	356
1282007	100	B5	455	229



ISO Mount Valve - PN16 with ISO mount, B5 Flange and EPDM Coating

Code	Size	Closing Direction	H	L	Weight
1281991	80	CC	250	203	13.5
1281992	80	ACC	250	203	13.5
1271993	100	CC	270	229	18
1281994	100	ACC	270	229	18
1281995	150	CC	365	267	37
1281996	150	ACC	365	267	37



Valve Handwheel

Code	Size	Closing Direction	OD	Weight
1281882	80 - 150	ACC	275	2.75
1281883	80 - 150	CC	275	2.75
1281884	200 - 300	ACC	335	4
1281885	200 - 300	CC	335	4

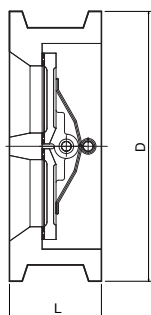
Resilient seated gate valves



Valve Spindle Cap

Code	Size	Closing Direction
1281913	80 - 100	ACC
1281916	80 - 100	CC
1281914	150	ACC
1281917	150	CC
1281915	200 - 300	ACC
1281918	200 - 300	CC

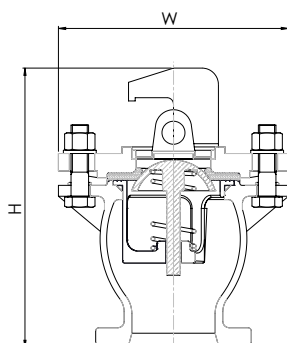
Check valves



Wafer Double Door Check Valve - PN16 with Fusion Bonded Polymeric Coating

Code	Size	L	D	Weight
1281920	50	54	96	1.5
1281921	65	54	109	2
1281922	80	57	126	2.5
1281923	100	64	158	4.25
1281924	125	70	190	6.5
1281925	150	76	210	8
1281926	200	95	267	14
1281927	250	108	331	27.5
1281928	300	143	379	39

Hydrant valves



Spring Hydrant Assembly - PN16 with Fusion Bonded Polymeric Coating

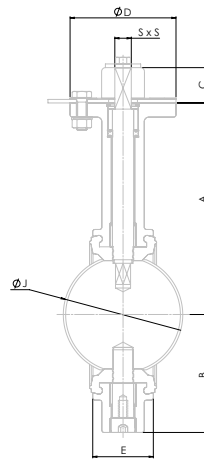
Code	Size	Variant	H	W	Weight
1281929	80	Blue	255	210	8.5
1281930	100	Blue	255	210	9.5
1008885	80	Lilac	255	210	8.5
1008886	100	Lilac	255	210	9.5
1291938	80/100	Slotted	225	210	9.5

Butterfly valves

**Table E Lugged Butterfly Valve -
PN16 and EPDM Coating**

Code	Size	A	B	C	ØD	E	ØJ	S x S	Weight
1281969	50	140	68	30	90	43	57	11 x 11	3
1281970	65	152	76	30	90	46	72	11 x 11	3.4
1281971	80	160	85	30	90	46	83	11 x 11	3.7
1281972	100	180	100	30	90	52	102	14 x 14	6.5
1281973	125	191	120	30	90	56	128	14 x 14	8.3
1281974	150	202	132	30	90	56	151	17 x 17	10.2
1281975	200	237	164	30	126	60	201	17 x 17	16.8
1281976	250	275	200	30	126	68	250	22 x 22	24.2
1281977	300	313	230	30	126	78	300	22 x 22	34.2

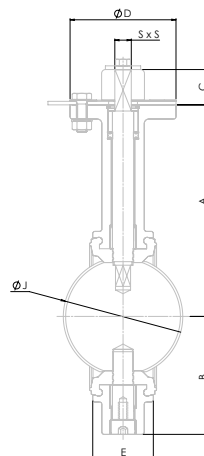
*Gearboxes available on request



**Table D Lugged Butterfly Valve -
PN16 and EPDM Coating**

Code	Size	A	B	C	ØD	E	ØJ	S x S	Weight
1281965	100	180	100	30	90	52	102	14 x 14	6.5
1281966	150	202	132	30	90	56	151	17 x 17	10.2
1281967	200	237	164	30	126	60	201	17 x 17	16.8
1281968	250	275	200	30	126	68	250	22 x 22	24.2

*Gearboxes available on request

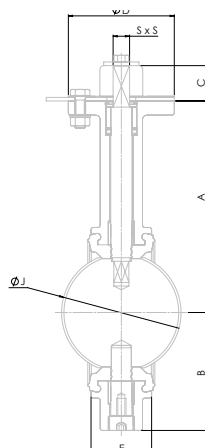


Butterfly valves

Wafer Butterfly Valve - PN16 and EPDM Coating

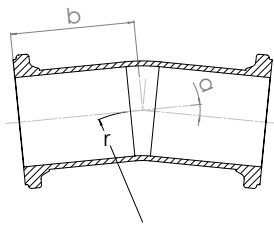
Code	Size	A	B	C	ØD	E	ØJ	S x S	Weight
1281978	50	160	80	30	90	43	57	11 x 11	2.6
1281979	65	175	90	30	90	46	72	11 x 11	3.6
1281980	80	180	95	30	90	46	83	11 x 11	4
1281981	100	200	115	30	90	52	102	14 x 14	5.3
1281982	125	215	135	30	90	56	128	14 x 14	6.9
1281983	150	225	138	30	90	56	151	17 x 17	8.4
1281984	200	241	174	30	126	60	201	17 x 17	13.3
1281985	250	295	198	30	126	68	250	22 x 22	19.6
1281986	300	336	234	30	126	78	300	22 x 22	32.2

*Gearboxes available on request



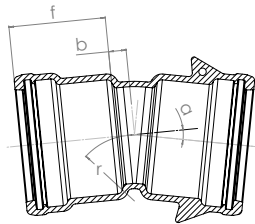
Fittings





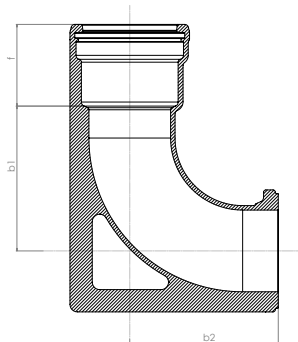
**Flanged B5 Bend -
PN16 with Fusion Bonded Polymeric Coating**

Code	Size	Angle	b	r	a	Weight
1281600	150	45	190	190	7	18
1281601	200	45	203	203	10	34
1281602	200	90	305	203	10	41
1281603	250	45	254	254	10	54
1281604	250	90	356	254	10	61
1281605	300	45	305	305	11	77
1281606	300	90	406	305	11	84



**Socketed Bend -
PN35 with Fusion Bonded Polymeric Coating**

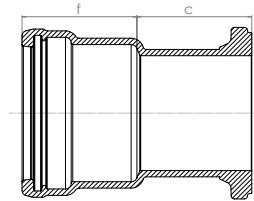
Code	Size	Angle	b	f	r	a	Weight
1281670	100	11.25	20	110	75	6	7
1281671	100	22.5	25	110	75	6	7
1281672	100	45	45	110	75	6	8
1281673	100	90	90	110	75	6	9
1281674	150	11.25	25	120	120	7	12.5
1281675	150	22.5	35	120	120	7	13
1281676	150	45	60	120	120	7	14.5
1281677	150	90	130	120	120	7	17



**Washout Bend -
PN16 with Fusion Bonded Polymeric Coating**

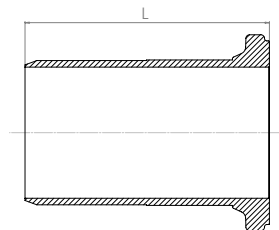
Code	Size	Angle	b1	b2	f	Weight
1281678	100	90	387	280	165	12

Connectors



**Socketed to Flanged B5 Connector -
PN16 with Fusion Bonded Polymeric Coating**

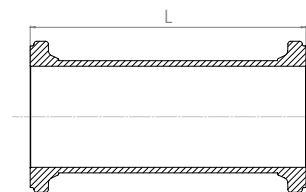
Code	Size	c	f	Weight
1281679	100	110	110	7
1281680	150	135	120	12.5



**Spigoted to Flanged B5 Connector -
PN16 with Fusion Bonded Polymeric Coating**

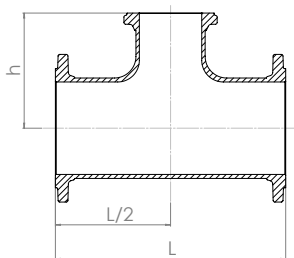
Code	Size	L	Weight
1281681	100	205	5
1281682	150	205	9.5
1281607	250	230	26
1281608	300	255	36

Hydrant risers



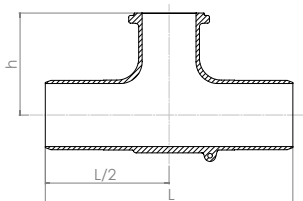
**Flanged B5 Hydrant Riser -
PN16 with Fusion Bonded Polymeric Coating**

Code	Size	L	Weight
1281616	80 X 100	100	3.5
1281617	80 X 150	150	4
1281618	80 X 225	225	5
1281619	80 X 300	300	6
1281620	80 X 450	450	8.5
1281621	80 X 600	600	10.5
1281683	100 X 100	100	5.5
1281623	100 X 150	150	6
1281624	100 X 225	225	7.5
1281625	100 X 300	300	8.5
1281626	100 X 450	450	11
1281627	100 X 500	500	12
1281628	100 X 600	600	13.5
1281630	150 X 300	300	15.5
1281631	150 X 600	600	24



**All Flanged B5 Tee -
PN16 with Fusion Bonded Polymeric Coating**

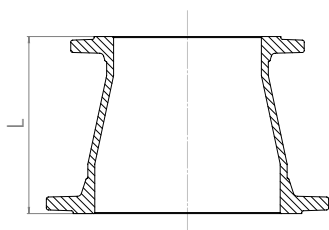
Code	Size	L	L/2	h	Weight
1281632	150 X 100	406	203	203	22
1281633	150 X 150	406	203	203	26
1281634	200 X 100	484	242	241	42.5
1281635	200 X 150	484	242	241	45.5
1281636	200 X 200	484	242	241	51
1281637	250 X 250	534	267	267	71
1281638	300 X 300	610	305	305	102



**Spigoted - Spigoted to Flanged B5 Tee -
PN16 with Fusion Bonded Polymeric Coating**

Code	Size	L	L/2	h	Weight
1281642	100 X 80	432	216	178	10.5
1281643	100 X 100	432	216	178	11
1281644	150 X 100	432	216	203	16
1281645	150 X 150	432	216	203	19

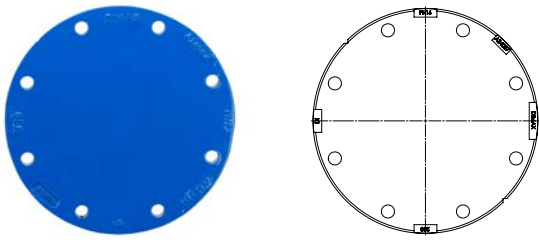
Tapers



**Flanged B5 Concentric Taper -
PN16 with Fusion Bonded Polymeric Coating**

Code	Size	L ₃	Weight
1281639	200 X 150	248	22.5
1281640	250 X 150	375	35
1281641	250 X 200	254	33

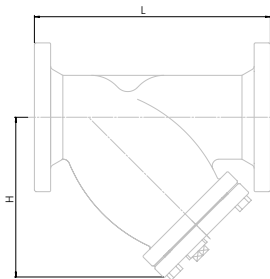
Ends



**Flanged B5 Blank Flange -
PN16 with Fusion Bonded Polymeric Coating**

Code	Size	Thickness	Width/ Height	Weight
1281609	80	18	140	2
1281610	100	21	165	3
1281611	150	23	260	6.5
1281612	200	23	335	13
1281613	225	24	370	17
1281614	250	24	405	20
1281615	300	30	455	32

Strainers



**Flanged Table E Strainer -
PN16 with Stainless Steel Screen and
Fusion Bonded Polymeric Coating**

Code	Size	L	H	Plug bsp	Weight
1008650	50	230	146	1/2"	8.5
1008651	65	273	174	1"	12
1008652	80	295	198	1"	16
1008653	100	352	232	1"	25
1008654	125	416	285	1 1/4"	37
1008655	150	470	305	1 1/2"	52
1008656	200	543	401	1 1/2"	89
1008657	250	660	473	2"	145
1008658	300	770	554	2"	192.5

