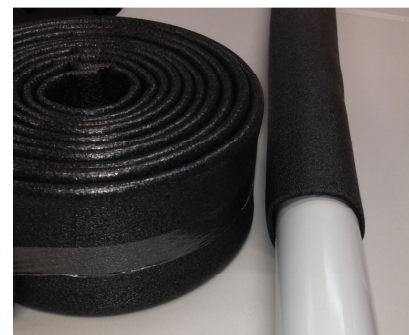


***Thermotec Closed Cell
Expansion Joint
Pipe Sleeve***
AS/NZS3500.2 & AS2870 C5.6.4



Thermotec Closed Cell Backing Expansion Joint Pipe Sleeve is manufactured from closed cell low density polyethylene foam. The product is manufactured in a range of sizes and has excellent compression and recovery properties

Material:	Low density polyethylene closed cell foam
Density:	40-50kg/m3 nominal
Service Temperature:	-40C to +90C
Water Absorption:	<2% by volume after 28 days submersion
Compression Recovery:	Excellent – 95%
Compression Deflection:	Excellent - >20.5KPa
Compression Resistance:	Excellent - <335kPa
Load Bearing:	No deterioration at 10 kN
Chemical Resistance:	Excellent - Resists most commercially used chemicals & acids
Resistance to Hydrocarbons:	Excellent – Resistant to oils, diesel, petrol & most solvents
Flexibility:	Excellent

- *Compatible with all PVC pipe sizes from 40mm to 150mm*
- *Easy & fast installation – readily cut on site*
- *Excellent compression resistance – proven joint filler/expansion joint material*
- *Used in de-bonding applications (full range of Rebar sizes)*
- *Offers protection to pipework from ground movement*
- *Available in 2 metre lengths or rolls*
- *Low moisture absorption*
- ***Complies with AS/NZS3500.2 clause 3.8.2b – “with a liner of flexible material”***
- ***Complies with AS2870 C5.6.4 – “drains in footings wrapped in closed cell foam”***
- *Optimum wall thickness for application (nominal 6.5mm thick wall)*
- *Meets Green Building Council low VOC & zero ozone depleting substances*
- *Contains recycled materials*
- *Made in Australia*