

MIZU SOOTHE SINK MIXER WITH PULLOUT

IMPORTANT NOTE

Mixer must be installed to the requirements of AS/NZS 3500 by a qualified plumber. Your mixer comes to you already factory assembled and tested. We do not recommend the dismantling of any internal part of the mixer. The mixers are factory tested and sealed so as to give the best performance.

1. Please flush out pipe work prior to connecting the new mixer.
2. All mixers should be installed with isolating stop cocks (Arco brand recommended).
3. This tap is suitable for high pressure applications where both hot and cold water supply pressures are at 150kPa or above.
4. Place the base washer (19) and Dress Ring (18) into position.
5. Place the tap body (14) into the sink hole making sure first that the flexible connectors (22, 23) are firmly tightened into base of the body.
6. Fit washer (20) and horse shoe plate (21) onto Threaded Rod Assembly (25, 26, 27, 28). For stainless steel sink, thread brass spacer sleeve and fix mixer to sink with brass lock nut (25).
7. Screw adapter (26, 27, 28) firmly onto threaded rod (25).
8. Connect the flexible Pull-Out Hose (24) by tightening the adapting nipple making sure first to insert the rubber seal.
9. Connect the hot and cold water supply's to isolating stop cocks. Fit lead weight (33) to flexible pull out hose (24) so that hand piece (2, 3, 4, 5, 36, 37) fully retracts into the tap body.

SERVICING - REPLACEMENT OF CARTRIDGE

1. Lift chrome cover (6) and unscrew the grub screw (7) using an Allen key.
2. Remove sink mixer handle (8), cartridge dome (9) and unscrew the lock nut (16).
3. Pull out cartridge (15) and replace with new, making sure the cartridge sits properly into the mixer body. Replace the lock nut (16), cartridge dome (9) and sink mixer handle (8).
4. Tighten grub screw and push in chrome cover.

Plumbers, please ensure a copy of the installation instructions is left with the end user for future reference.

MIZU SOOTHE SINK MIXER WITH PULLOUT

COMPONENT LIST

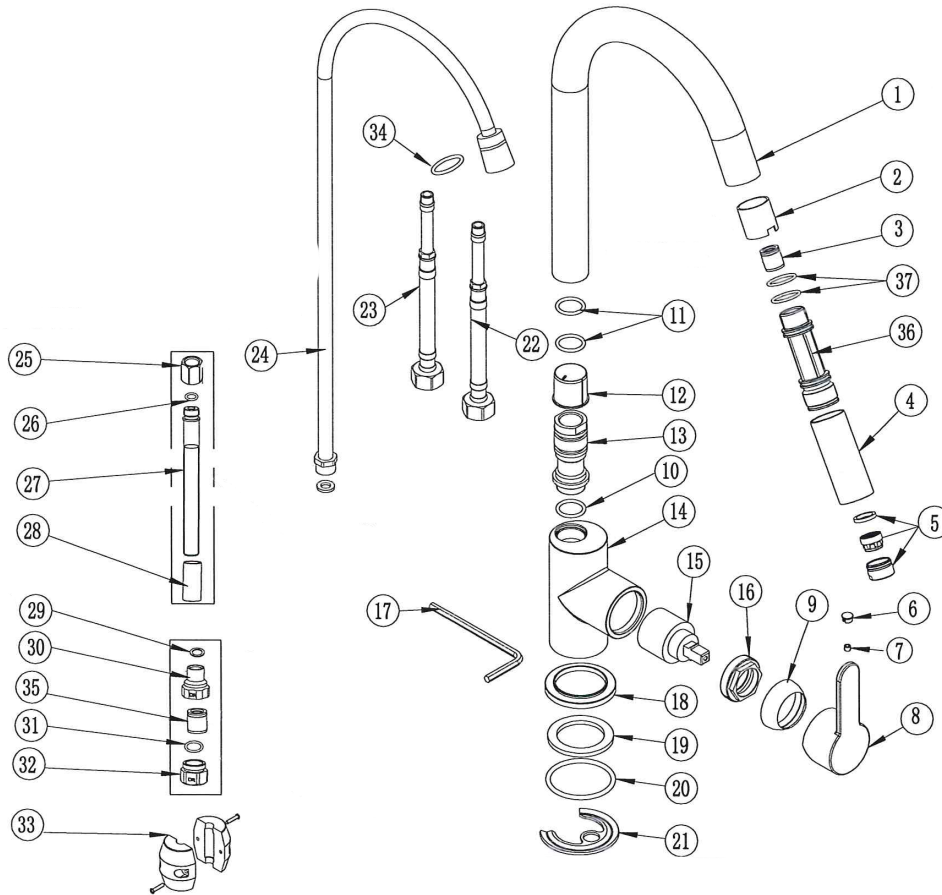


DIAGRAM NUMBER	DESCRIPTION
1	Spout
2	Plastic Sleeve
3	Check Valve/Flow Regulator
4	Spout
5	Neoperl Aerator
6	Grub Screw Cover
7	Grub Screw
8	Handle
9	Cartridge Dome
10	O-Ring
11	O-Ring
12	Sleeve
13	Spout Spigot
14	Body
15	Cartridge
16	Lock Nut
17	Allen Key
18	Base
19	Washer
20	O-Ring

DIAGRAM NUMBER	DESCRIPTION
21	Fixing Plate
22	Flexible Hose
23	Flexible Hose
24	Pull Out Hose
25	Locking Nut
26	O-Ring
27	Adapter Shank
28	Retaining Sleeve
29	Washer
30	Connector
31	O-Ring
32	Bonnet
33	Weight
34	Hose Washer
35	Check Valve/Flow Regulator
36	Spout – Internal Cylinder
37	Spout – Washers