

WHITESTONE - OM 25 WALL BASIN

240mm x 380mm

FEATURES

Recommended use: Domestic, hotel, commercial.

Material: Fine Fire Clay

Weight: 6.5 kg (basin)

Fixing: Wall mounted.

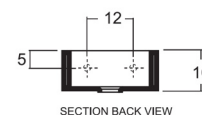
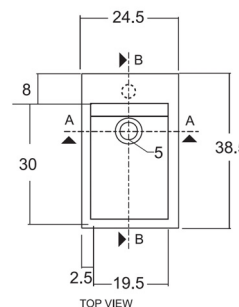
Warranty: 12 months warranty (see reverse).

INSTALLATION INSTRUCTIONS

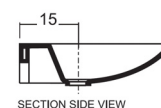
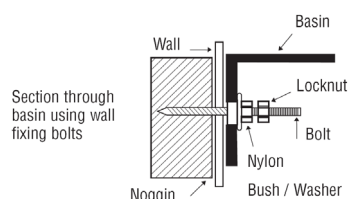
NB:

If fixing to timber framed wall or partitioning the wall should be reinforced with noggin to receive fixing bolts/screws

- 1 Drill holes into wall at required height. Fixing bolt centres are 120mm. Install fixing bolts supplied (see bolt profile).
- 2 Fit selected tapware to basin. Fit the required waste to basin ensuring it is sealed with silicone at top and bottom.
- 3 Carefully align basin complete with fittings onto protruding bolts.
- 4 Insert nylon bushes and locking nuts supplied and partially tighten lock nuts to hold basin into position. Make minor adjustments at this stage and ensure basin is level and then fully tighten lock nuts. Do not over tighten.
- 5 If desired all visible external edges can be joint sealed using flexible sealant ensuring to wipe off any excess.



Bolt profile



SPECIFICATIONS

Fixing requirement	Wall fixing (bolts supplied)
Integral overflow	No.
Tap hole availability	1.
Plug and waste	Suitable with 32 x 40mm non-overflow waste
Overflow dress ring	No.
Colour availability	White

Disclaimer:

Products in this specification manual must by regulation be installed by licensed and registered trade people. The manufacturer/distributor reserves the right to vary specifications or delete models from their range without prior notification. Dimensions and set-outs listed are correct at time of publication however the manufacturer/distributor takes no responsibility for printing errors.

WHITESTONE - OM 25 WALL BASIN

WARRANTY

Dear Customer,

This is the warranty by Reece Pty. Ltd. relating to this product. Please keep it together with your purchase receipt. In the unlikely event of a query please contact your nearest Reece Plumbing Centre.

Warranty

You have purchased a quality product from Reece Australia. This product is covered by a twelve month warranty. This warranty covers faults in the product construction, material and assembly. Faulty products will be repaired or exchanged free of charge. Faulty items become our property.

This warranty does not include faults caused by:

- Unsuitable or improper use
- Incorrect installation
- Installation or part installation by the purchaser or any person other than a LICENSED PLUMBER or tradesman
- Normal wear and tear
- Inadequate or complete lack of maintenance
- Chemical, electrochemical or electrical influences.

Cleaning Recommendations

Any sanitaryware should not be cleaned with abrasive materials eg steel wool/scourers. Do not use any corrosive or abrasive cleaning agents containing acids or scouring agents.

In the event of a warranty claim, we will replace or repair defective products, or pay for the cost of having defective products repaired or replaced, but will not be liable for any injury to any person, damage to any property, any indirect or consequential loss, or in any other respect.